

2026 pcl.

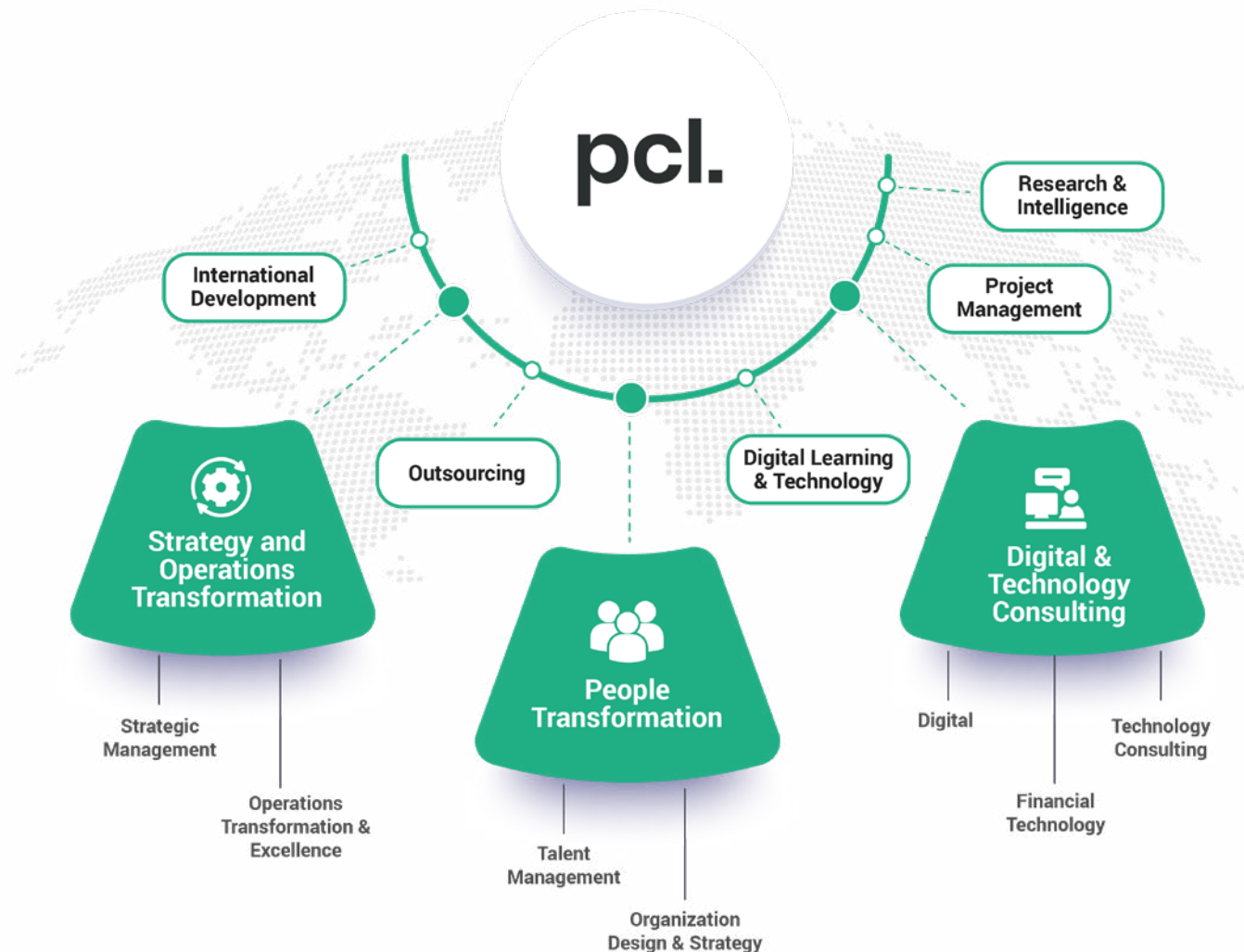
# Training Calendar

pcl.

# About Us

Founded in 1992 and headquartered in Nigeria, Phillips Consulting Limited (pcl.) is a leading business and management consulting firm serving clients across Africa through offices in Lagos and Abuja.

We are a leading provider of transformation, technology, and outsourcing services. Our staff represents diverse professional disciplines, ranging from business strategy, transformation & change, digital, information technology, digital and training. Our people are practitioners and professionals who combine in-depth consulting knowledge with leading industry experts - many having worked with leading international organisations and delivered successful outcomes across the public and private sectors.



# The Value We Bring

---



## Good Understanding of the Nigerian Business Environment

Phillips Consulting Limited (pcl.) has, over the past 30 years, built up a robust understanding of acceptable business practices and procedures for executing projects in Nigeria, as well as an understanding of the reputation and strengths of key players and stakeholders in the Nigerian Market.



## Strong Corporate and Public Sector Network

We work with private and public sector clients, including multinationals and leading Nigerian companies. We also work with Ministries and Government agencies at both Federal and State levels. This diverse client base has enabled us to develop valuable relationships with key decision-makers across various sectors.



## Talent Pool

Phillips Consulting (pcl.) anchors its strength on the selection and development of its multidisciplinary consultants. The firm has highly experienced and dynamic consultants who are fully conversant with leading business practices. Our consultants are at the cutting edge of trends and developments in their respective fields.



## Relevant Knowledge

We have a track record of successful execution in organisational restructuring, transformation, implementation/execution support, project management, change management, post-merger support, business process development, corporate governance, digital, process automation, learning, and technology deployment. All of which demonstrates our versatility.

# Why pcl.

## We have significant experience in driving delivery and getting results



We have an in-depth understanding of several sectors, their strategic direction, and interdependencies.



We are a respected brand in Nigeria with a passion for delivering long-term sustainable solutions in the region.



We have the local understanding and reach. We have significant experience of working with government agencies and navigating political nuances as they arise.



We have structured mechanisms that ensure service delivery to cost, time, quality, and scope.



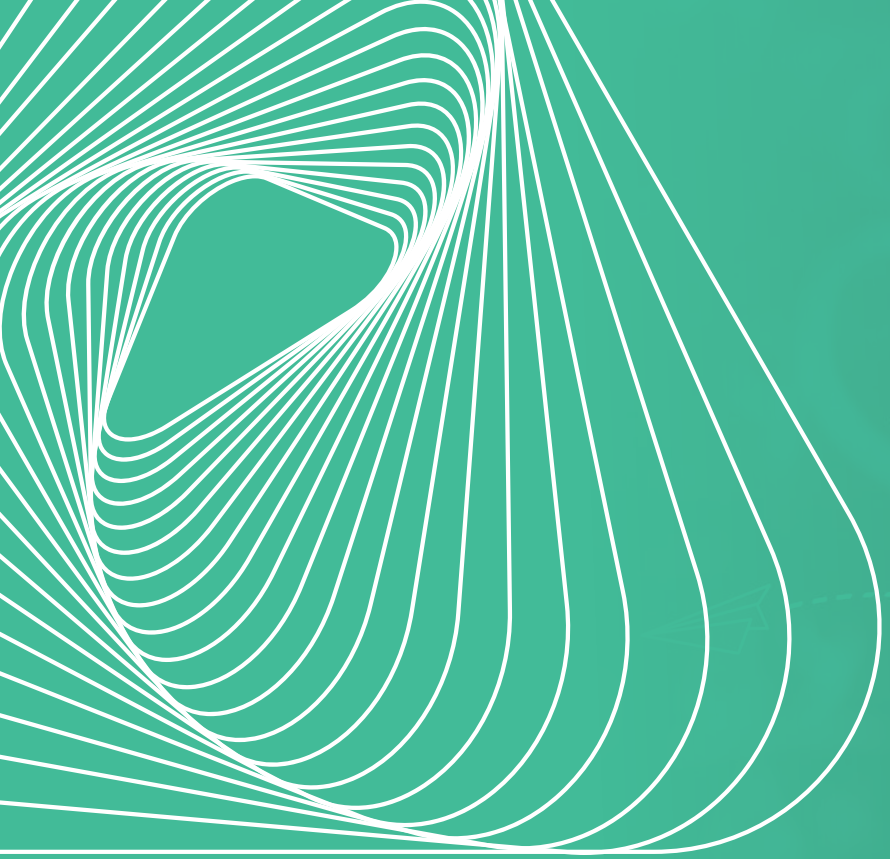
Our talented team possesses significant consulting and research capabilities, coupled with business transformation expertise. They are proficient in skills and needs assessments, with a track record of solution design and implementation.



# Why Choose Us For Your Learning Interventions?

---

- 
- A man in a dark suit and tie is sitting at a desk, smiling and looking at a laptop. A coffee cup is on the desk in the foreground. The background is slightly blurred, showing an office environment.
- With over three decades of expertise in learning and development and extensive experience in training facilitation, we excel at optimising your training budget for maximum cost efficiency.
  - Leveraging our profound understanding of the ever-evolving business landscape, our programmes equip individuals with the indispensable skills, knowledge, behaviour and mindset needed to tackle intricate challenges and create opportunities.
  - Our learning methodologies have evolved in tandem to meet the needs of future learners. We have adopted the flipped learning approach and learning on the Metaverse to ensure the utmost relevance and impact.
  - We are in strategic partnerships with esteemed global institutions and business schools. These collaborations guarantee our clients receive the most pertinent and impactful learning experiences founded on the latest research and industry best practices.
  - We are committed to delivering the most relevant learning experience tailored to your objectives while collaboratively identifying a programme that aligns with your needs and budget.
  - Our steadfast dedication to delivering the highest calibre of professional development has consistently resulted in outstanding outcomes for individuals and organisations.



# pcl. Learning Approach and Methodology

# Our Learning Approach

Our five-Step methodology will ensure that all our courses are engaging and relevant to the job roles of our delegates:



## Listen

To delegates needs by deploying a series of assessments and conducting interviews.



## Articulate

A holistic set of needs and outcomes based on the profiles of delegates.



## Infuse

The needs of learners into existing courses and customise cases and simulations accordingly.



## Deliver

A highly participative session with opportunities to discuss real life challenges in a supportive environment.

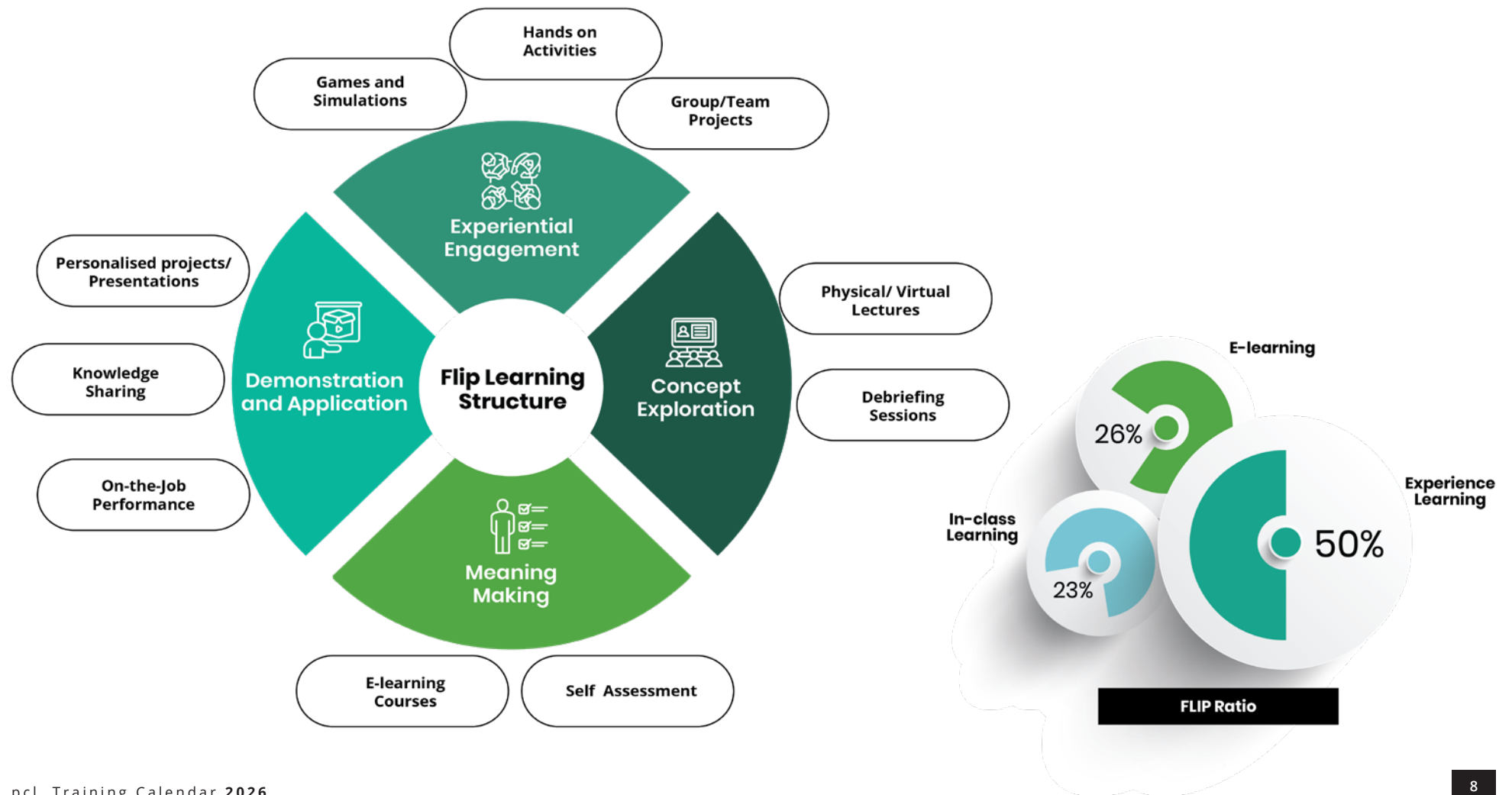


## Improve and Sustain

With an exclusive community set up for lifelong learning.

- As the business world evolves, one undeniable truth remains: for any organisation to thrive, it must have a workforce of adept individuals exhibiting the appropriate behaviour and mindset.
- At pcl., we approach learning using our five-step methodology to ensure a comprehensive and immersive experience. These steps are meticulously designed to foster a deep understanding, critical thinking, and practical application of the subject matter.
- pcl. is committed to a purpose-driven learning approach that guarantees immersive and value-driven training. This approach integrates a diverse range of simulation exercises and engaging activities specifically tailored for adult learners, ensuring optimal retention of knowledge and skills.

# Our flipped learning methodology delivers immersive learning, strengthens subject mastery, and drives sustained performance improvement





# Learning and Leisure



**Learning does not always have to be just formal! Learning can be fun and a great way to relax, socialize and network. pcl. introduces at the end of each training week, its outdoor learning with leisure activities.**

**Here are some of the fantastic recreational & relaxation activities, we have planned out just for you!**



## **Team Activities**

- Volleyball
- Beach Soccer
- Bowling
- Table Tennis
- Golf
- Paintballing
- Go Kart Riding



## **Other Fun Networking & Relaxation Activities**

- Speed Boat Cruises
- Art Galleries
- Paint and Sip
- Karaoke
- Canopy Walk

We are certain you will have an exquisite learning experience



# Course Highlights

# Course Highlights – 1/4

**Understanding Self and Human Behaviour + The Thomas Personal Profile Analysis (PPA)**

19-20 February  
23-24 April  
4-5 June  
5-6 August

**N465,750**

**2 days**

(Exclusive of VAT)

**Women in Leadership: Mastering Key Leadership Competencies**

17-19 June

**N400,000**

**3 days**

(Exclusive of VAT)

**Stress and Anger Management**

13 March  
15 May  
21 August  
18 November

**N186,300**

**1 day**

(Exclusive of VAT)

**Pre-Retirement Training**

11-13 May  
10-12 August  
6-8 October

**N400,000**

**3 days**

(Exclusive of VAT)

**Diversity, Equity and Inclusion in the Workplace**

7 – 9 April  
17 – 19 June  
15 – 17 September

**N450,700**

**3 days**

(Exclusive of VAT)

**Navigating Office Politics**

15-16 April  
15-16 July  
15-16 October

**N310,500**

**2 days**

(Exclusive of VAT)

**Incident Command, Crisis Response & Business Continuity for Operations & Facilities**

22-24 April  
9-11 September

**N350,000**

**3 days**

(Exclusive of VAT)

**Corporate Asset Protection & Operational Intelligence**

11-13 March  
8-10 June  
23-25 September

**N350,000**

**3 days**

(Exclusive of VAT)

## Course Highlights – 2/4

### Executive Office Management and Strategic Business Support

6-8 May  
17-19 August

**N350,000**

(Exclusive of VAT)

3 days

### Building an AI talent ready Strategy

11-13 May  
11-13 August

**N450,000**

(Exclusive of VAT)

3 days

### Crises Leadership and Decision-Making Strategy

12-14 May  
18-20 August

**N368,667**

(Exclusive of VAT)

3 days

### Project Management Professional (PMP)

26-30 January  
9-13 March  
4-8 May  
6-10 July  
14-18 September  
7-11 December

**N450,450**

(Exclusive of VAT)

5 days

### AI Prompt Engineering for Professionals

13-14 April  
6-7 July  
28-29 September  
7-8 December

**N528,000**

(Exclusive of VAT)

2 days

### Data Analytics, Business Intelligence & Visualisation with Power BI

26-29 January  
4-7 May  
17-20 August  
12-15 October  
16-19 November

**N436,150**

(Exclusive of VAT)

4 days

### ISO 31000 Risk Management

13-16 April  
1-4 June  
12-15 October

**N550,000**

(Exclusive of VAT)

4 days

### Certified in Governance & Enterprise Information Technology (CGEIT)

9-13 March  
18-22 May  
10-14 August  
19-13 October

**N550,000**

(Exclusive of VAT)

3 days



## Course Highlights – 3/4

### ISO 22301 - Business Continuity Management Lead Auditor Certification

2-6 March  
15-19 June  
21-25 August  
7-11 December

**N550,000**

(Exclusive of VAT)

5 days

### Scrum Product Owner

1-5 June  
2-6 November

**N536,250**

(Exclusive of VAT)

5 days

### ITIL4 Foundation

19-21 January  
20-22 April  
8-10 June  
10-12 August  
12-14 October  
7-11 December

**N328,900**

(Exclusive of VAT)

3 days

### Capability Maturity Model Integration for Development (CMMI-DEV)

2-6 March  
22-26 June  
21-25 September

**N575,000**

(Exclusive of VAT)

5 days

### Data Management Fundamentals

26-27 January  
2-3 March  
4-5 May  
6-7 July  
1-2 September

**N421,850**

(Exclusive of VAT)

2 days

### Certified Business Analysis Professional

26-29 January  
9-12 March  
18-21 May  
3-6 August  
12-15 October

**N526,240**

(Exclusive of VAT)

4 days

### ISO 9100 Quality Management Systems Lead Auditor & Certification

20-24 April  
20-24 July  
14-18 September

**N550,000**

(Exclusive of VAT)

5 days

### ISO/IEC 29100 Certified Lead Privacy Implementer

9-12 March  
15-18 June  
12-15 October

**N550,000**

(Exclusive of VAT)

4 days

## Course Highlights – 4/4

### Cybersecurity Fundamentals for Business

10-12 March  
9-11 July  
15-17 September

**N331,500**

(Exclusive of VAT)

3 days

### CompTIA Network+

17-21 March  
16-20 June

**N520,000**

(Exclusive of VAT)

5 days

### Certified Cloud Security Analyst

19-21 May  
11-13 August  
10-12 November

**N500,000**

(Exclusive of VAT)

3 days

### AWS Cloud Practitioner

10-13 March  
18-21 August

**N520,000**

(Exclusive of VAT)

4 days

### Software Testing Masterclass

12-16 May  
4-8 August  
17-21 November

**N474,500**

(Exclusive of VAT)

5 days

### Fraud Risk Management

30 June-3 July  
6-9 October

**N325,000**

(Exclusive of VAT)

4 days

### Certified Enterprise Blockchain Professional

17-21 February  
19-23 May  
10-14 November

**N520,000**

(Exclusive of VAT)

5 days



# International Course Highlights

# Mastering Disruptive Digital Leadership & Strategic Corporate Governance Programme

Boards, Chief Executives, and Investors amongst charting courses through uncharted territory, rapid change, and soaring expectations are now expected to have a certain understanding of technologies.

This is a result of today's business world being marked by disruption, digital transformation, and VUCA (Volatility, Uncertainty, Complexity, Ambiguity).

To succeed, embracing the right technology is paramount, as technology is the catalyst for financial growth and innovation. This programme delves into key top management concerns, including attracting and retaining top talent, developing the next generation of leaders, maintaining an engaging workforce, digital transformation, global economic shifts, product innovation, outperforming key competitors, navigating uncertainty, competitive advantage, and technology adoption.

## What delegates will gain from our Mastering Disruptive Digital Leadership & Strategic Corporate Governance Programme

- The strategic significance of innovation and digital transformation
- Shifting from reactive to proactive strategies
- Identifying technology risks, vulnerabilities, and opportunities
- Balancing risk and reward in disruptive innovation
- Introducing disruptive innovation as a business process
- Succeeding with emerging technologies, driving new product innovations
- Navigating uncertainty
- Leading discussions on technology's impact on business trajectory
- Proactive risk mitigation

### Schedule

**13-17 July, 12-16 October (Open Session)**

Please contact us for in-plant session

**International Run**  
**Date: 23-27 November**  
**Location: United Kingdom**  
**Training Fee: \$8,775**

**Local Run**  
**Training Date:**  
**13-17 July, 12-16 October**  
**Location: Yankari Game Reserve, Bauchi.**  
**Training Fee: N3,025,000**

**Discount Applies for Bulk Nominations**



**Instructor-Led**



**5 days**



# Creative Leadership Strategies for the Future of Work Programme

As global events and technological advancements have combined to successfully reshape our lives and work, leading a company into the future necessitates more than a strategic plan. The increasing complexity requires leaders to evolve in lockstep with the world of work and the war on talent, as what was once considered core leadership skills for the workplace are fast becoming obsolete.

We have partnered with the Intellectual Forum: Jesus College in the University of Cambridge to deliver the Creative Leadership Strategies for the Future of Work, a four-day executive leadership programme designed to equip business leaders and executives from various industries and sectors with the tools and frameworks needed to navigate change in all aspects of the workplace and to provide them with an immersive learning experience.

## What delegates will gain from our Creative Leadership Strategies for the Future of Work Programme

- Access to international best practices and insights on navigating the workplace.
- Discover how to use technology-driven and human-centred models to reimagine the future of work.
- Gain a thorough understanding of the trends influencing the future of work.
- Learn business transformation strategies to create a personal blueprint for a future-focused workplace.
- Connect with a diverse international group and expand your professional network.
- Gain access to the world-class faculty at Jesus College in the University of Cambridge and Phillips Consulting's cutting-edge thinking and insights.
- Certificate from the Intellectual Forum – Jesus College in the University of Cambridge.

**Date: 8-11 June 2026**  
**16-19 November 2026**  
**Location: United Kingdom**  
**Training Fee: \$10,000**

**Discount  
Applies  
for Bulk  
Nominations**



**Instructor-Led**



**4 days**

# The Advanced Organisational Resilience Programme

Organisations at all scales and sectors face growing risk and organisational resilience challenges like never before. An ever-growing number of challenges, compounded by the speed of technological change, climate change, cyber threats and evolution, all act together to increase these challenges.

Building Organisational Resilience provides business leaders with a practical approach to assess and build organisational resiliency.

This programme provides cutting-edge strategies to fortify your organisation against disruptions and uncertainties, ensuring its continued growth and success. Our distinguished faculty of industry experts will guide you through a transformative journey, equipping you with the insights, tools, and leadership prowess to foster resilience, drive innovation, and seize opportunities in any scenario.

## What delegates will gain from our Advanced Organisational Resilience Programme

- Knowledge within strategic areas of resilience and business continuity
- The ability to communicate fluently across functional boundaries
- Credibility within the resilience profession
- Effective action-based outcomes to advance organisational strategies
- The ability to network across sectors to gain transdisciplinary knowledge

### Schedule

**10-14 August, 23-27 November 2026 (Open Session)**

Please contact us for in-plant session

**International Run Date:**  
**20-24 July, 7-11 December**  
**Location: Qatar**  
**Training Fee: \$8,775**

**Local Run Training Date:**  
**10-14 August, 23-27 November**  
**Location: Ibom Icon Hotel & Golf Resort**  
**Training Fee: N3,025,000**

**Discount  
Applies  
for Bulk  
Nominations**



**Instructor-Led**



**5 days**

# The Leading Digital Transformation Strategy Executive Programme

To thrive while facing disruption at every turn, leaders must reinvent their companies again and again. Digital transformation strategies are no longer nice-to-have, they are required.

Digital transformation isn't solely reliant on adopting new technologies. It demands new ways of thinking about how business is done, who does the work, and the customer experience associated with it.

In this programme, delegates will gain the skills to develop and implement a digital strategy within your organisation. Drawing on insights from pcl. business faculty, industry leaders, case studies, and your peers, delegates will develop a robust understanding of digital cultures, foundations, and frameworks to craft their own transformational strategy.

## What delegates will gain from our Leading Digital Transformation Strategy Executive Programme

- Explore digital disruption from the perspectives of strategy, organisation, and leadership for the long term.
- Strengthen your skills as a visionary leader by learning how to spot digital opportunities, develop strategies around them, and pitch them persuasively to key stakeholders.
- Shift your mindset from traditional thinking on product- or service-based value creation and competition to a platform and ecosystem perspective, and understand the new set of strategic choices and tradeoffs they represent.
- Deepen classroom learning and begin reimagining your business through daily faculty-led integration sessions.

### Schedule

**1-5 June, 14-18 September (Open Session)**

Please contact us for in-plant session

**International Run Date:**  
**22-26 June, 30-4 November**  
**Location: United Kingdom**  
**Training Fee: \$8,775**

**Local Run Training Date: 1-5 June, 14-18 September**  
**Location: Ibom Icon Hotel & Golf Resort**  
**Training Fee: N3,025,000**

**Discount Applies for Bulk Nominations**



**Instructor-Led**



**5 days**

# The IT Executive Leadership Programme

Our Leadership and Executive Management portfolio provides frameworks for senior executives within the Executive Management category, and programmes for all leaders in the Leadership category.

This programme is designed to help senior executives manage disruptive forces that have accelerated organisations' innovation and operation. Participants will explore the different leadership styles and when they should be used to maximise others' performance.

Throughout the course, Executives will learn about best practices for IT Leadership and Management, including how to develop an IT Strategy that aligns with business objectives, how to manage IT investments, and how to build and manage high performance teams.

## What delegates will gain from our IT Executive Leadership Programme

- Develop a deep understanding of emerging technologies, including artificial intelligence, blockchain, cloud computing, and the Internet of Things (IoT).
- Gain an in-depth knowledge of best practices for managing complex IT projects and programmes, including project management methodologies, risk management, and change management.
- Enhance strategic thinking skills by exploring IT trends and opportunities to develop innovative strategies that align with the organisation's overall business goals.
- Develop an understanding of cybersecurity threats and ways to mitigate risks through secure IT practices and effective governance.

### Schedule

**10-14 August, 30-4 December (Open Session)**

Please contact us for in-plant session

**International Run Date:**  
**9-13 November**  
**Location: DC, USA**  
**Training Fee: \$8,775**

**Local Run Training Date:**  
**10-14 August, 30-4 December**  
**Location: Ibom Icon Hotel & Golf Resort**  
**Training Fee: N3,025,000**

**Discount  
Applies  
for Bulk  
Nominations**

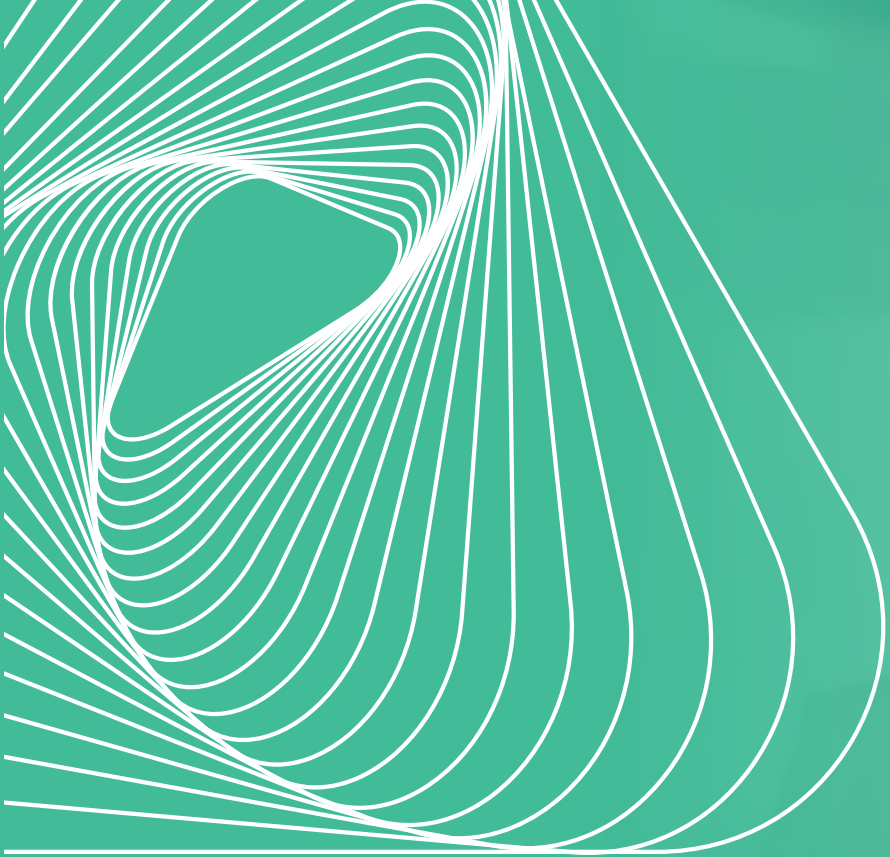


**Instructor-Led**



**5 days**





# **In-House Certification Courses**



# Certified Knowledge Manager

The highly acclaimed Knowledge Management (KM) Institute CKM programme is KM Institute's flagship course, delivered in up to 15 countries yearly, with thousands Certified since 2001.

The KM Institute in conjunction with Phillips Consulting brings this CKM programme to Nigeria. Douglas Weidner is one of the only few pioneering KM practitioners since KM's earliest days. He developed the internally acclaimed Certified Knowledge Manager certification programmes and forms part of the Phillips Consulting faculty on this course.

## What delegates will gain from our Certified Knowledge Manager Course

- Perform KM using proven tips/tools anyone can use!
- Build collaborative environments, better communication, spark innovation
- Transform your organisation into a rapid-learning environment
- Develop innovative ways to motivate your staff with quick wins
- Create the KM vision for your company, including a solid strategy to get there
- Initiate with your peers successful communities of practice
- Discover usable, real-world KM principles and keys to success

Schedule

Please contact us for in-plant session

**Cost - \$2,940.00  
per participant**

**Discount  
Applies  
for Bulk  
Nominations**



**Instructor-Led**



**CKM  
Certification  
Awarded**



**5 days**

# Certified Learning Facilitator

The CLF certification course is designed to equip participants with the knowledge and skills required to go through the examination process and earn the credence of Certified Learning Facilitator.

It will use a combination of practical sessions, audio-visual learning materials, simulations and lectures to produce exceptional talent and resources in the area of training and facilitation.

The certification exam will hold at different times during the year and all participants qualify to sit for the certification at the end of the training programme. This could be immediately at the completion of the training class or at a later communicated date.

## What delegates will gain from our Certified Learning Facilitator Course

- Learn the principles of training design and facilitation – both physical and virtual.
- Learn the process of user-centred instructional design.
- Learn the art of training large diverse numbers without compromising quality especially in virtual classrooms.
- Explore methods to help to master tone, facilitate exercises, hone speaking skills, and establish a safe, engaging learning environment for participants.
- Acquire learning transfer strategies for embedding the training into the participants' daily work routines.

Please contact us for in-plant session

**Cost – \$500 per participant**

**Discount  
Applies  
for Bulk  
Nominations**



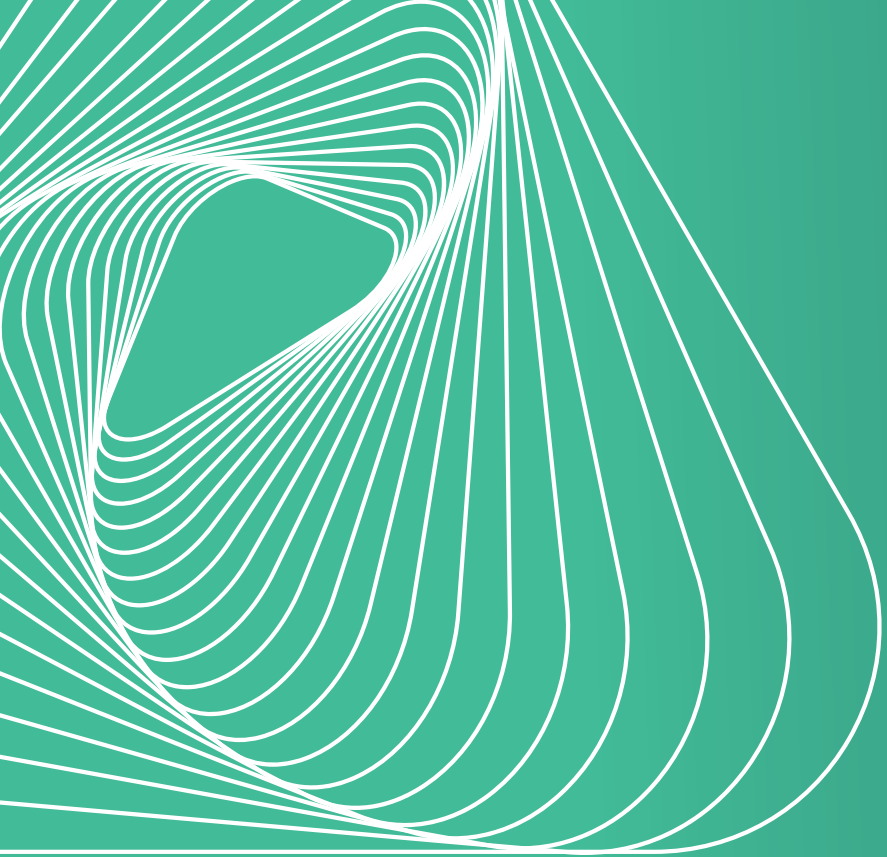
**Instructor-Led**



**CLF  
Certification  
Awarded**



**5 days**



# Our Programme Fees





# Our Programme Fees (Terms and Conditions)

## Open Programmes

- Our professional fee excludes VAT (at the applicable rate).
- Other terms and conditions shall apply as outlined in our Standard Terms and Conditions of Engagement.
- Programme dates will be scheduled based on availability. To secure a spot in the programme, you must notify us at least two weeks in advance.

### Payment Terms

An upfront payment of 100%

### Fee Structure Assumptions

- Training sessions will be conducted at our facilities.
- For attendees from outside our primary location, the client will be responsible for any travel and accommodation expenses incurred by participants.

## Customised (In-Plant) Programmes

For customised or in-plant programmes, we shall require an engagement letter from your organisation accepting our terms and conditions and agreeing to the payment of our project fees according to the milestones described below:

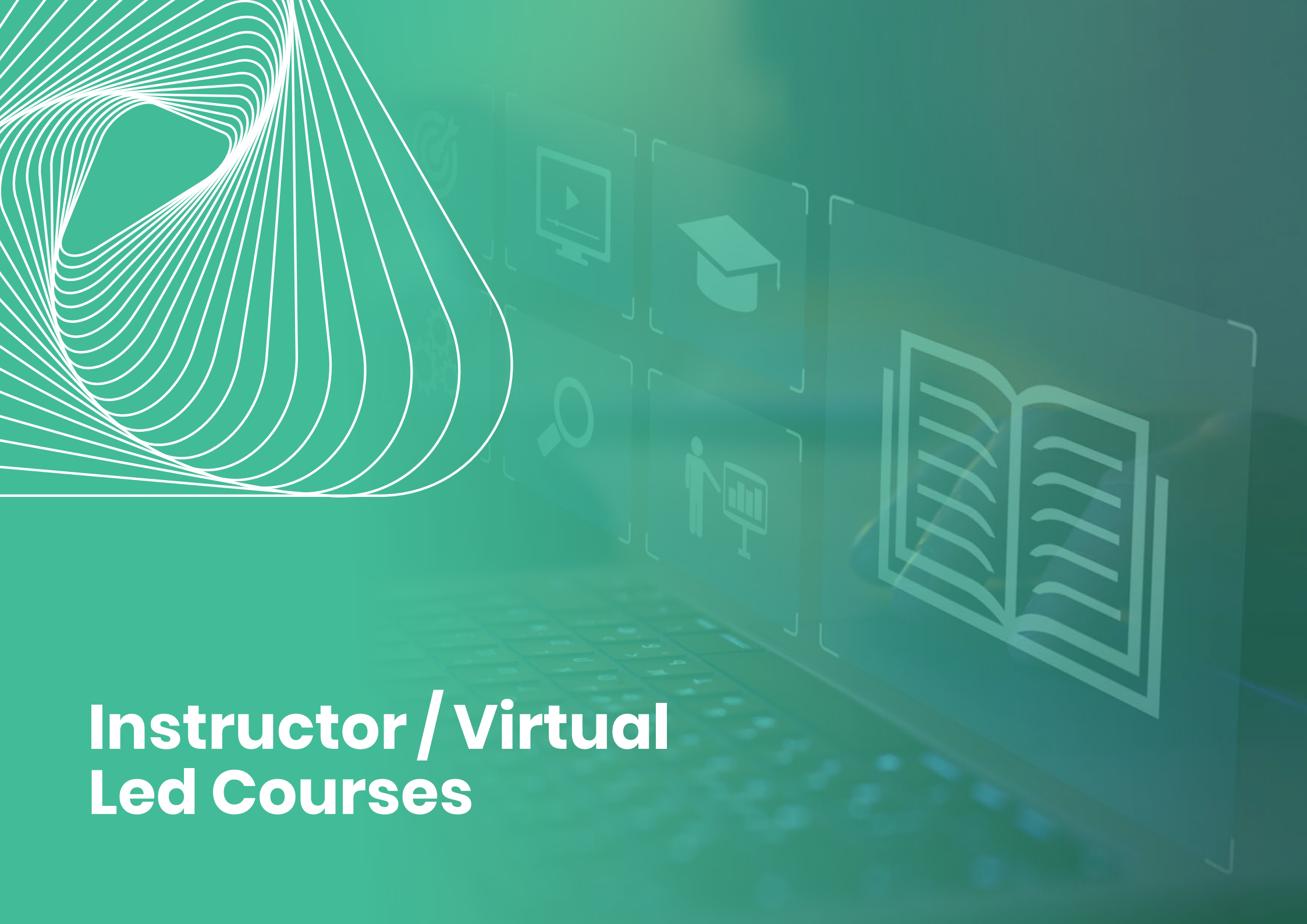
- Our professional fee excludes VAT (at the applicable rate).
- Other terms and conditions shall apply as outlined in our Standard Terms and Conditions of Engagement.
- Programme dates will be mutually agreed upon, and a minimum notification period of two weeks is required to commence the customised programme.

### Payment Terms

- An upfront payment of 80% is required before the programme begins.
- The remaining 20% balance is due upon completion of the programme.

### Fee Structure Assumptions

- Training sessions can be conducted at the client's facilities or a mutually agreed location.
- For training conducted outside our primary location, the client will cover travel and accommodation expenses for our consultants.



# **Instructor / Virtual Led Courses**

# Instructor / Virtual Led Courses

At pcl. (Phillips Consulting Limited), we take immense pride in our innovative and dynamic approach to learning. We have structured the calendar to offer flexibility and accessibility, with training sessions available in both instructor-led and virtual formats. This approach ensures that all participants, regardless of location or scheduling constraints, can participate and benefit from our programmes.



## **Instructor-Led Training (ILT) Sessions:**

Our Instructor-Led Training (ILT) sessions are designed to provide interactive and hands-on learning experiences to our participants. These sessions are led by seasoned experts in their respective fields who bring extensive industry knowledge and practical insights. These sessions are in person and take place at our designated training facilities, providing participants from various locations with the opportunity to meet and engage in an immersive and engaging learning experience.



## **Virtual Instructor-Led Training (VILT) Sessions:**

Our Virtual Instructor-Led Training (VILT) sessions provide you with the opportunity to receive professional training from the comfort of your desktop, laptop, or mobile device. We understand the importance of convenience and accessibility, and our VILT sessions ensure the same level of quality and engagement as our in-person training sessions. These sessions are delivered through a robust virtual platform that supports live video, chat, and collaborative tools.

Our training calendar has been designed to cater to the diverse needs of our participants. We have curated a range of programmes across various domains and skill levels. Each programme is carefully designed to align with organisational goals and individual career aspirations. Whether you are seeking to deepen your technical expertise, develop leadership skills or enhance your soft skills, our training calendar offers something for you.

**Should you have any questions or require further information, please do not hesitate to contact the Training Department.  
(pcltraininghub@phillipsconsulting.net)**



# **Leadership, Management & Executive Programmes**

Lagos

Courses	No of runs	Duration	Fee(N) Exclusive of VAT		Jan	Feb	Mar	Apr	May	Jun	Jul	Aug	Sep	Oct	Nov	Dec
Leading Self		Day(s)	Physical	Virtual												
Managers Starters Kit	4	3	385,703	242,850.		18-20		15-17			8-10				4-6	
Personal Workplace Effectiveness	4	3	326,025	205,275			4-6		6-8			5-7		7-9		
Goal Setting, Planning & Decision Making	4	2	310,500	195,500	15-16			16-17			16-17					16-17
Taking on Greater Responsibilities	4	4	389,800	230,000	20-23			7-10			7-10			6-9		
Time Management Essentials	5	1	177,920	92,575	23			2		10			11		13	
Navigating Office Politics	3	2	310,500					15-16			15-16			15-16		
Leadership & Wellness	3	3	388,200	195,500		18-20					15-17				18-20	
The Resilient Leader	4	3	356,400	195,500			17-19			17-19			16-18			9-11
Stress & Anger Management	4	1	186,300				13		15		21				18	
Networking & Relationship Building Masterclass	4	2	310,500	184,000		26-27			25-26			27-28			26-27	
Women in Leadership: Mastering Key Leadership Competencies	1	3	400,000	230,000						17-19						
Leading Others																
Leading & Motivating High-performing Teams	3	3	356,399	207,000			11-13			17-19			9-11			
Emotional Intelligence Mastery	4	2	331,148	207,000		5-6			6-7			6-7			5-6	
Developing Leadership Competencies	5	5	547,256		12-16			13-17			6-10				9-13	
Building & Developing Productive People	3	3	370,271	207,000		18-20			6-8			5-7				
Managing Employee Performance for Results	3	3	370,271	207,000			17-19				15-17			14-16		
Leading in a Multigenerational Environment	4	2	380,362	207,000		25-26			14-15			13-14			5-6	
Leadership Agility & Adaptability Masterclass	4	1	186,300				13		15			21			18	
Innovation & Productivity in the Workplace	3	3	327,422					20-22			6 - 8			7-9		
The Total Leader	3	5	544,151				9-13			15-19			14-18			7-11
The Manager as a Coach	3	3	466,526	276,488				7-9			20-22			5-7		
Understanding Self & Human Behaviour + The Thomas Personal Profile Analysis (PPA)	4	2	465,750			19-20		23-24		4-5		5-6				



Courses	No of runs	Duration	Fee(N) Exclusive of VAT		Jan	Feb	Mar	Apr	May	Jun	Jul	Aug	Sep	Oct	Nov	Dec
Leading the Organisation		Day(s)	Physical	Virtual												
Advanced Impactful Leadership	3	5	569,573				9-13				13-17				4-8	
Mastering the Art of Negotiation	3	2	355,367	207,000		16-17			25-26			27-28				
Critical Thinking & Innovative Skills	3	3	410,791	207,000		4-6		7-9					16-18			
Stakeholder Engagement & Mangement	3	2	341,550	184,000			12-13		14-15			13-14				
Finance & Operations Strategy (Driven by Advanced Business Simulation)	1	5	1,150,000										21-25			
Business Acumen	3	2	465,750					1-2		4-5				5-6		
Strategic Thinking & Decision-Making Skills	3	3	365,613	207,000				7-9			1-3			5-7		
Design Thinking & Innovation	3	2	363,285				5-6			4-5			9-10			
Business Intelligence & Optimisation	2	2	368,874					8-9				5-6				
High-Performance Leadership Programme	3	2	372,600	230,000			18-19			25-26				21-22		
Change Management	3	2	342,326	207,000		12-13			14-15				9-10			
Leading & Managing Change	3	5	465,750	230,000	19-23			13-17			6-10			12-16		
Strategic Leadership & Organisational Culture	3	5	465,750	230,000		2-6		13-17				3-7				
Executive Programmes																
Disruptive Leadership Masterclass		Available as an in-plant class	850,000	<p><b>*The dates for the executive programme are flexible.</b></p>												
Leadership in the Age of Artificial Intelligence			800,000													
Agile Thinking in a Changing Business World																
Building The Future-Ready Board			800,000													
Data-Driven Decision-Making & Analytics for Executives			800,000													
Corporate Governance & Board Effectiveness			800,000													
Ethical Leadership & Corporate Social Responsibility			800,000													
Leadership in Sustainable Business Practices			800,000													



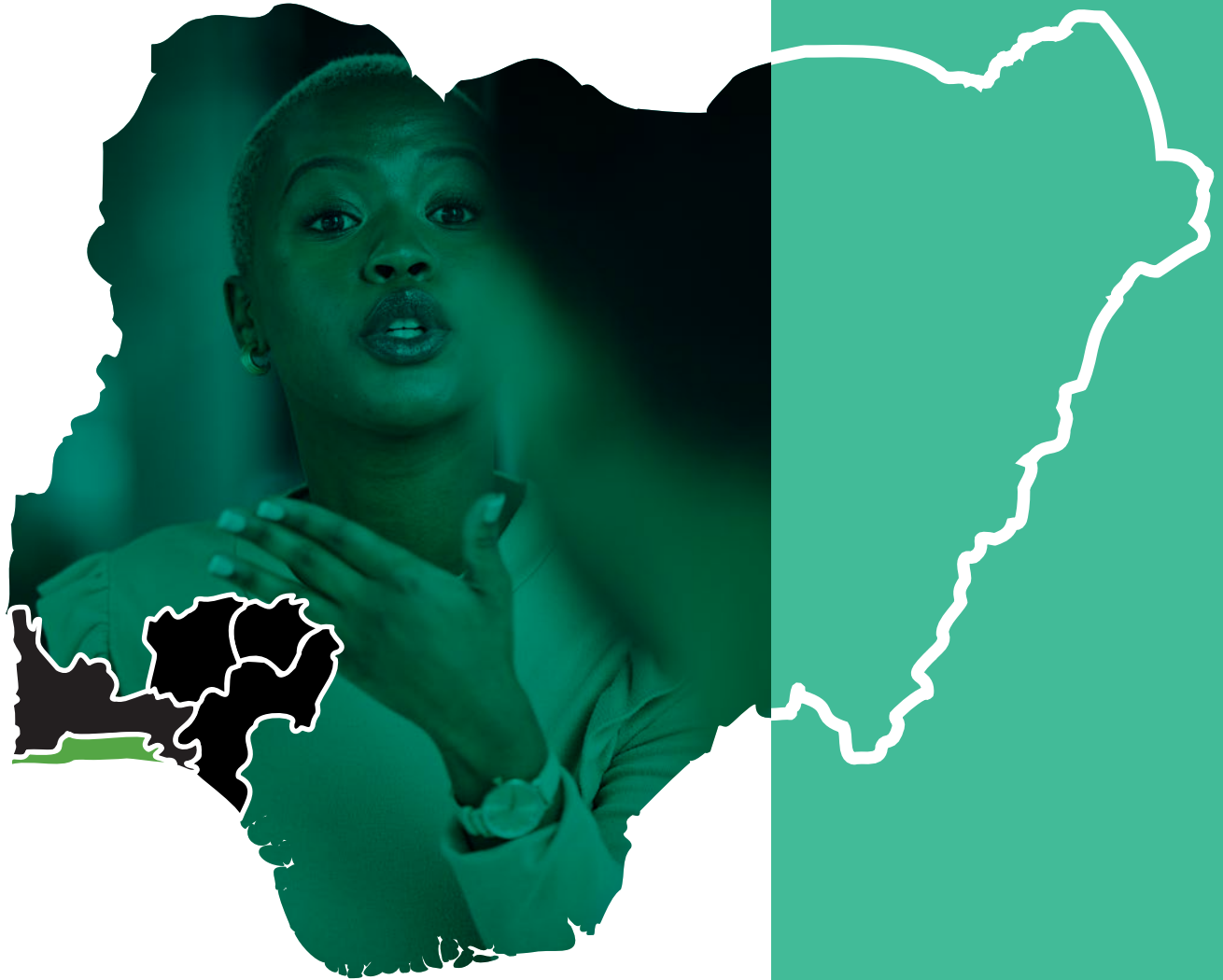
## Business Courses

Lagos

Courses	No of runs	Duration	Fee(N) Exclusive of VAT	Jan	Feb	Mar	Apr	May	Jun	Jul	Aug	Sep	Oct	Nov	Dec
<b>Startup/SME Business</b>		<b>Day(s)</b>	<b>Physical</b>												
Business Essentials for Entrepreneurs	2	3	328,900			10 – 12					18 - 20				
Business Acumen & Strategic Awareness	2	3	448,500				21-23			14-16					
Strategic Thinking, Analysis & Business Planning	2	3	448,500					19 - 21					14 - 16		
Building & Sustaining Long-Term Business Success in Nigeria	2	3	448,500				15-17			8-10					
Effective Business Decisions Using Data Analysis	1	3	448,500									23-25			
Operational Business Excellence: Leading with a Strategic Edge	2	3	351,325						9 - 11			2 - 4			
Practical Business Planning Workshop	2	2	313,950					11 - 12			10 - 11				
Branding for Entrepreneurs	2	3	341,705			10 – 12			22 - 24						
The Art of Networking & Relationship Mastery	2	3	328,900	20 - 22			13 - 15			15 - 17					
Business Planning, Pitching, & Presentation	2	3	448,500					13 - 15						11-13	
Legal Essentials for Startups & Entrepreneurs	2	2	373,750						10-11			10-11			
Design Thinking & Innovation for Start-ups:	2	3	448,500			11-13							14-16		
Market Research & Analysis	2	3	403,650						8 - 10		4 - 6				

# Communication & Branding Programmes

Lagos



Courses	No of runs	Duration	Fee(N) Exclusive of VAT		Jan	Feb	Mar	Apr	May	Jun	Jul	Aug	Sep	Oct	Nov	Dec
Communication		Day(s)	Physical	Virtual												
Effective Business Writing	4	3	341,712	-	19 - 21		4-6			3-5			16 - 18			
Technical Report Writing	3	4	378,235	-			24 - 27		19 - 22				22 - 25			
Ethical Communication	3	1	171,327	80,000			11			16			10			
Communicating with Assertiveness	3	1	171,327	80,000			18				15				19	
High-Impact Business Communication	3	4	359,757	180,000				14 - 17		22 - 25		10 - 13				
Public Speaking and Presentation Skills	4	3	341,705	-			11-13			23 - 25			15 - 17			9 - 11
The Act of Active Listening	4	1	164,450	-		20			20			20			20	
Communication Strategies for Senior Leadership	4	3	366,275	180,000		11-13			12-14		7 - 9			6 - 8		
Communicating with Influence & Impact	3	2	313,950	178,500			10 - 11			15 - 16			16-17			
Branding																
Branding A-Z	3	3	341,705	170,000			4-6		6-8				2-4			
Strategic Brand Management	3	2	302,157	171,795			25 - 26		20 - 21				16-17			
Corporate Identity & Brand Management	3	4	418,600	200,000			10 - 13			23 - 26				13-16		
Personal Branding	2	2	330,021	160,000	20-21			9-10				5 - 6				
Consumer Psychology & Branding	3	2	315,071	160,000			11-12			23 - 24		18 - 19				

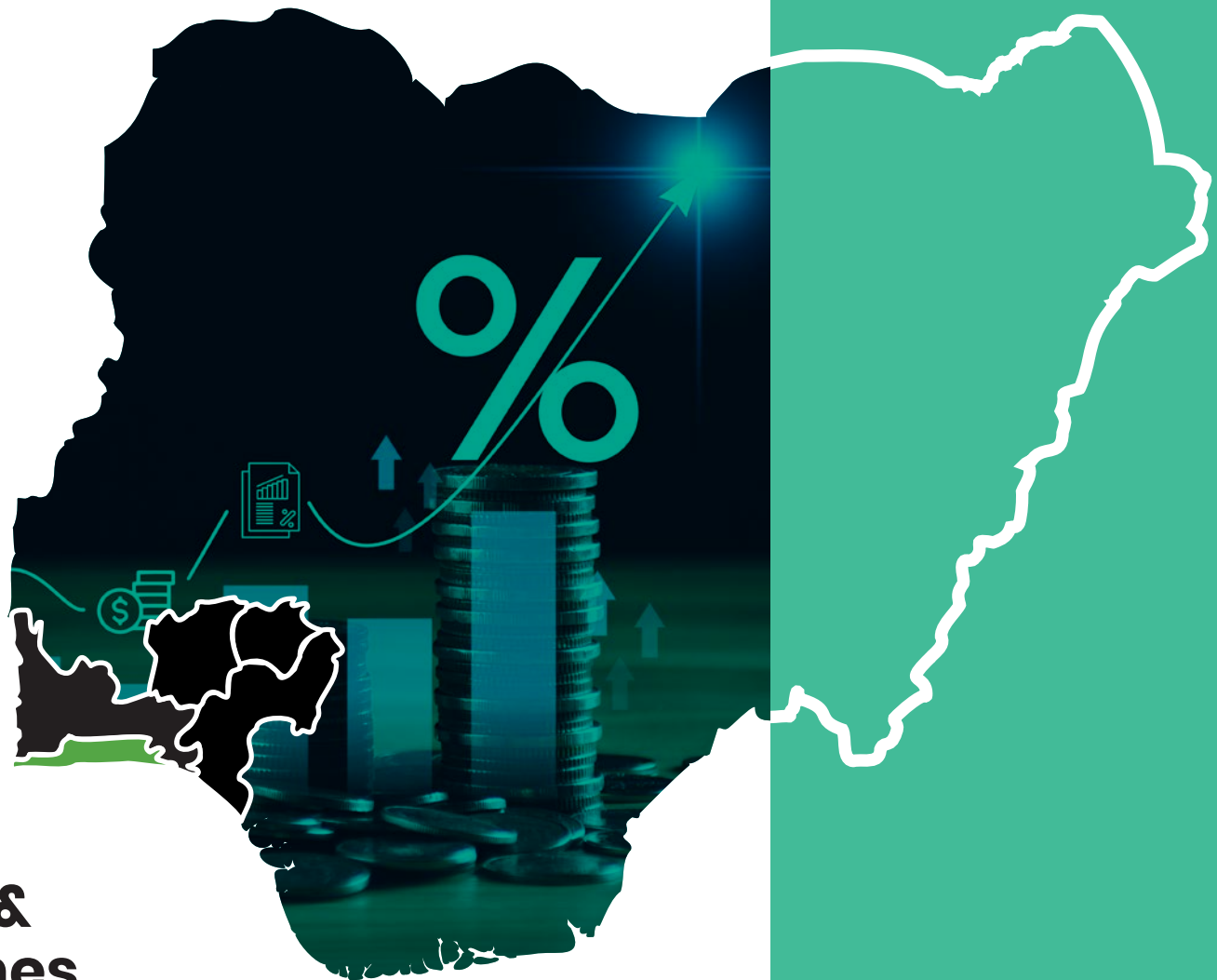


# **Sales, Marketing & Customer Experience Programmes**

Lagos




Courses	No of runs	Duration	Fee(N) Exclusive of VAT		Jan	Feb	Mar	Apr	May	Jun	Jul	Aug	Sep	Oct	Nov	Dec
Sales & Marketing		Day(s)	Physical	Virtual												
Digital Marketing	3	3	341,697.20	207,000.00			11-13				1-3		23-25			
Marketing & Business Development Skills	3	3	341,697.20	207,000.00				22-24		24-26			23-25			
Planning & Executing Marketing & Sales Strategy	4	3	341,697.20	207,000.00		25-27			6-8			12-14			4-6	
Consultative Selling Masterclass	2	3	344,709.63	207,000.00				8-10				12-14				
Strategic Key Account Management	3	3	358,800.00	153,000.00				8-10			8-10					2-4
Developing & Implementing Strategic Marketing Plans	3	5	523,250.00				2-6			22-26				19-23		
The Psychology of Selling	2	3	344,709.63	204,700.00					6-8				2-4			
The Sales Bootcamp	2	5	523,250.00					20-24				17-21				
Sales for Non-Sales Professionals	3	3	343,850.00	196,075.00			17-19			24-26			23-25			
Mastering Influence & Negotiation	2	3	344,709.63	207,000.00			17-19				29-31					
Sales Etiquette	2	3	299,000.00	184,000.00					7-8			12-13				
Customer Experience Management																
Customer Experience Management	3	2	305,607.90	172,500.00				8-9		10-11				22-23		
Customer Relationship Management	3	3	341,697.20				4-6			3-5			2-4			
Delivering Service Excellence	3	2	305,607.90	172,500.00				16-17			15-16		10-11			
Contact Center Agent Training	2	3	341,697.20	207,000.00					13-15			12-14				



# Finance, Operation & Strategy Programmes

Lagos

Courses	No of runs	Duration	Fee(N) Exclusive of VAT	Jan	Feb	Mar	Apr	May	Jun	Jul	Aug	Sep	Oct	Nov	Dec
<b>Finance</b>		<b>Day(s)</b>	<b>Physical</b>												
Basic Financial Modeling	3	3	341,697.20					20-22		15-17		23-25			
Advanced Financial Modeling	3	3	359,756.80			17-19			3-5					11-13	
Financial Management & Credit Analysis	3	2	343,850.00				9-10			2-3			8-9		
Finance & Accounting for Non-Finance Professionals	3	4	404,883.38			10-13			16-19			8-11			
Revenue Forecasting & Financial Analysis	2	5	518,362.50				6-10					14-18			
International Public Sector Accounting Standards (IPSAS)	2	5	748,362.50					13-17			26-30				
Cost Optimisation, Management & Reporting	2	3	335,253.75			11-13		6-8					7-9		
Business Performance Reporting: Balanced Scorecard & Analytics for Business	2	2	335,253.75				23-24		25-26		27-28				
Advanced Budgeting & Cost Management	2	3	396,175.00							1-3				4-6	
Economics of Banking and Finance	3	2	345,000				23-24		25-26		26-30				
Finance in the Global Market	3	3	350,500			17-19			3-5			14-16			
<b>Operations Management</b>															
Inventory & Warehouse Management	3	4	359,547.50			16-19			22-25		3-6				
Vendor & Contract Management	3	4	359,547.50					5-8				22-25		17-20	
Strategic Supply Chain & Procurement Management	3	4	359,547.50				14-17		23-26					24-27	
Facilities Management	3	3	313,950.00				22-24			22-24			21-23		
Purchasing Management Specialist	2	4	359,547.50					12-15				15-18			
Business Process Mapping & Reengineering (BPR)	2	3	413,479.63			17-19					19-21				
<b>Corporate Strategy</b>															
ESG Corporate Governance	2	2	341,697.20					21-22				17-18			
Crises Leadership & Decision-Making Strategy	2	3	368,667.00					12-14			18-20				
Developing, Executing & Sustaining Strategy for Competitive Advantage	2	3	368,667.00			11-13						23-25			
Corporate Governance & Ethics	3	2	344,223.75			12-13				9-10				11-12	



# **Talent & Knowledge Management & Workplace Productivity Tools Programmes**

Lagos

Courses	No of runs	Duration	Fee(N) Exclusive of VAT		Jan	Feb	Mar	Apr	May	Jun	Jul	Aug	Sep	Oct	Nov	Dec
Human Capital Management		Day(s)	Physical	Virtual												
Designing & Implementing Compensation & Benefits	2	3	341,700	-				22-24						21-23		
HR Metrics & Analytics	4	1	179,775	-			11			11			11			
Designing a Performance Management Framework	3	3	341,700	-				8-10				4-6			11-13	
Competency Based Interview Skills	2	3	322,800	-					13-15					14-16		
Human Resource Business Partner	3	2	287,548	-			26-27				9-10			22-23		
The Master Class in HR Strategy	2	4	448,500	--			11-14				15-18					
Integrated Talent Management	3	3	300,000	-					5—7				15-17			9-11
Designing & Implementing Competency Frameworks & Assessment Tools	2	3	448,500	-			18-20					5-7				
Introduction to Human Resource	3	2	341,700	-				9-10			1-2			15-16		
Managing the HR Function	3	4	359,756	-			9-12				6-9			12-15		
Agile HR Transformation - A to Z of Best Practices	2	4	448,500	-						15-18					16-19	
Strategic Performance Management using an Executive Dashboard	2	5	523,250	-						22-26				12-16		
Versatile Performance Management in a VUCA World	2	5	523,250	-					18-22				21-25			
Managing the Learning & Development Function	3	2	329,273	-			5-6			3-4			2-3			
Talent Acquisition: The Total Recruitment Process	2	2	366,275	-		26-27				25-26			24-25			
Building an AI Ready Talent Strategy	2	3	450,000						11-13			11-13				
Employee Experience Design	2	2	313,950	-				9-10				20-21				
Knowledge Management																
Certified Knowledge Manager	1	5	\$3,381	-	On Request											

Courses	No of runs	Duration	Fee(N) Exclusive of VAT		Jan	Feb	Mar	Apr	May	Jun	Jul	Aug	Sep	Oct	Nov	Dec
<b>Learning &amp; Instructional Design</b>		<b>Day(s)</b>	<b>Physical</b>	<b>Virtual</b>												
e-Learning Instruction Design & e-Content Development	3	4	359,756	-					5-8				8-11			
Instructor-Led Course Development with Facilitation Techniques	3	5	458,200	-				13-17				10-14				
Learning & Development Strategies for a High Performing Organisation	3	4	598,000			16-19			11-14			24-27				
<b>Workplace Productivity Tools</b>																
Data Visualisation - Storytelling with Infographics	2	4	329,475	-		3-6				23-26						
Basic Microsoft Excel	2	2	287,548	-			24-25					20-21				
Intermediate Microsoft Excel	2	3	341,699	-			4-6					24-26				
Advanced Microsoft Excel with Dashboard	2	4	359,756	-				7-10				22-25				
Strategic Office Operations & Executive Support	3	2	305,607	-				29-30		3-4			8-9			
Executive Office Management & strategic Business Support	3	3	350,000						6-8			17-19			2-4	
Pre Retirement Training : Life After Retirement	3	3	400,000						11-13			10-12		6-8		





## Safety & Security Courses

Lagos

Courses	No of runs	Duration	Fee(N) Exclusive of VAT		Jan	Feb	Mar	Apr	May	Jun	Jul	Aug	Sep	Oct	Nov	Dec
Safety Courses		Day(s)	Physical	Virtual												
Incident Management, Crisis Response & Business Continuity for Facility/ Operations	2	3	350,000.00	-				22-24					9-11			
Fundamentals of Workplace Safety & Hazard Management	3	3	350,000.00	-		11-13			20-22			19-21				
Workplace Safety Foundations & Hazard Control Techniques	2	3	350,000.00	-			18-20			24-26			16-18			
Strategic Leadership in Occupational Health & Safety	2	3	400,000.00	-					13-15					14-16		
Operational Safety & Safe Work Practices	3	3	350,000				23-25			23-25			23-25			
Contractor & Operations Safety Management	3	3	350,000.00	-		11-13					15-17				11-13	
Security Courses																
Corporate Asset Protection & Operational Intelligence	3	3	350,000				11-13			8-10			23-25			
Security & Facilities Risk Management Essentials	2	3	350,000	-		10-12					15-17					
Safe Material Handling & Warehouse Safety Management	2	3	350,000	-				15-17				12-14				
Security Leadership & Culture Transformation for Non-Security Leaders	2	3	350,000	-					18-20					19-21		
Emergency Response & Threat Management	2	3	350,000				16-18				14-16					



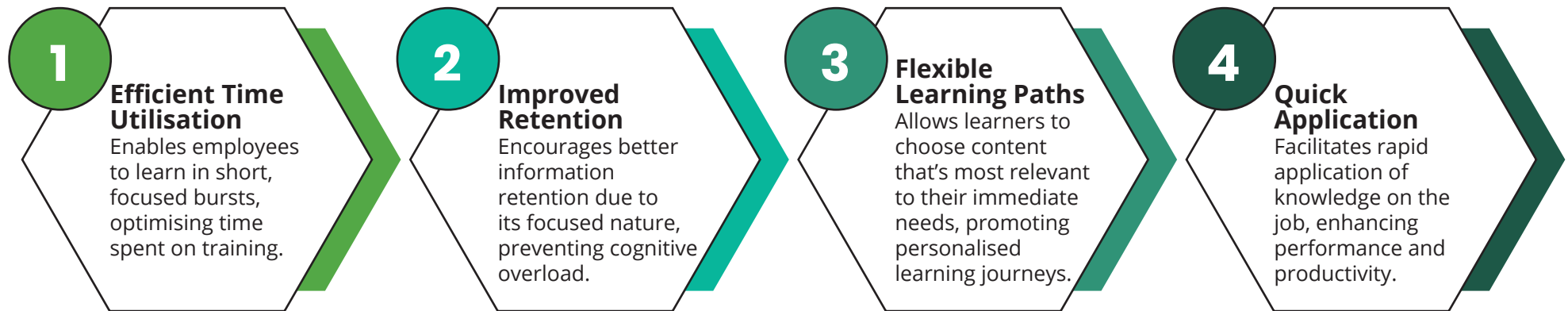
# Microlearning Courses

# pcl. Microlearning Courses

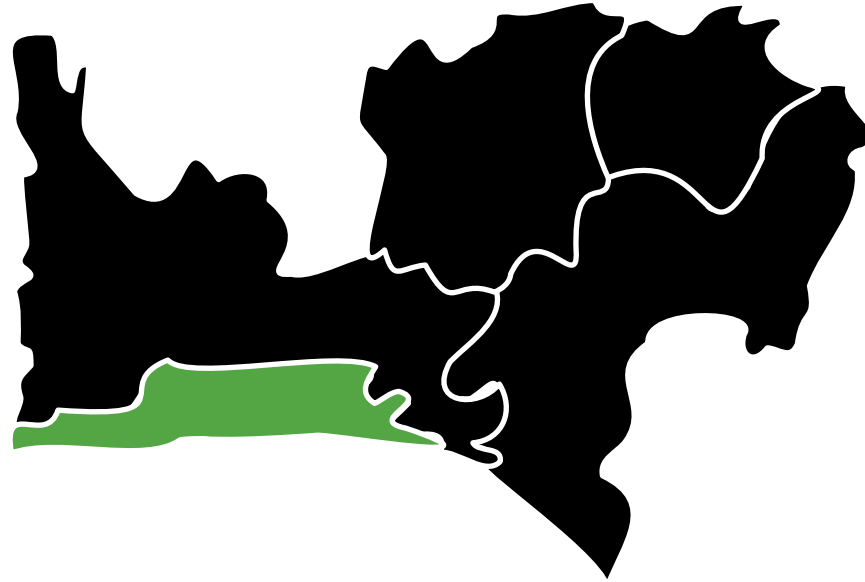
---

pcl. Microlearning courses has emerged as a dynamic and effective approach to learning in today's fast-paced world. This innovative method breaks down courses into bite-sized learning nuggets and are designed to address a single learning objective, ensuring maximum retention and application. By enrolling your employees to take our microlearning courses, you empower them to learn at their own pace, enhancing their performance and contributing to the overall success of your organisation.

## Benefits of the pcl. Microlearning



Courses	No of runs	Duration	Fee(N) Exclusive of VAT	Jan	Feb	Mar	Apr	May	Jun	Jul	Aug	Sep	Oct	Nov	Dec
		Hour(s)	Virtual												
Time Management	12	2 hours	50,000	<p><b>The microlearning programme operates throughout the year, providing learners with a consistent and accessible pathway for continuous learning and skill development.</b></p> <p><b>Please note that a minimum class size of 15 participants is required for the class to hold.</b></p>											
Digital Marketing Basics	12	2 hours	50,000												
Self-Care for Productivity	12	2 hours	50,000												
Emotional Intelligence-Self Awareness	12	2 hours	50,000												
Effective Email Communication	12	2 hours	50,000												
Communicating with Assertiveness	12	2 hours	50,000												
Negotiating for Success	12	2 hours	50,000												
The Act of Listening & Giving Feedback	12	2 hours	50,000												
Developing Personal Accountability	12	2 hours	50,000												
Public Speaking Basics	12	2 hours	50,000												
Building Self-Confidence & Assertiveness	12	2 hours	50,000												
Prospecting & Lead Generation	12	2 hours	50,000												
The Act of Closing Sales Deal	12	2 hours	50,000												
Managing Sales Pipeline	12	2 hours	50,000												
Effective Presentation Techniques	12	2 hours	50,000												
Handling Difficult Customers	12	2 hours	50,000												
Building a Growth Mindset	12	2 hours	50,000												



# Technology Courses

**Lagos Centre (Instructor-Led Classes)**



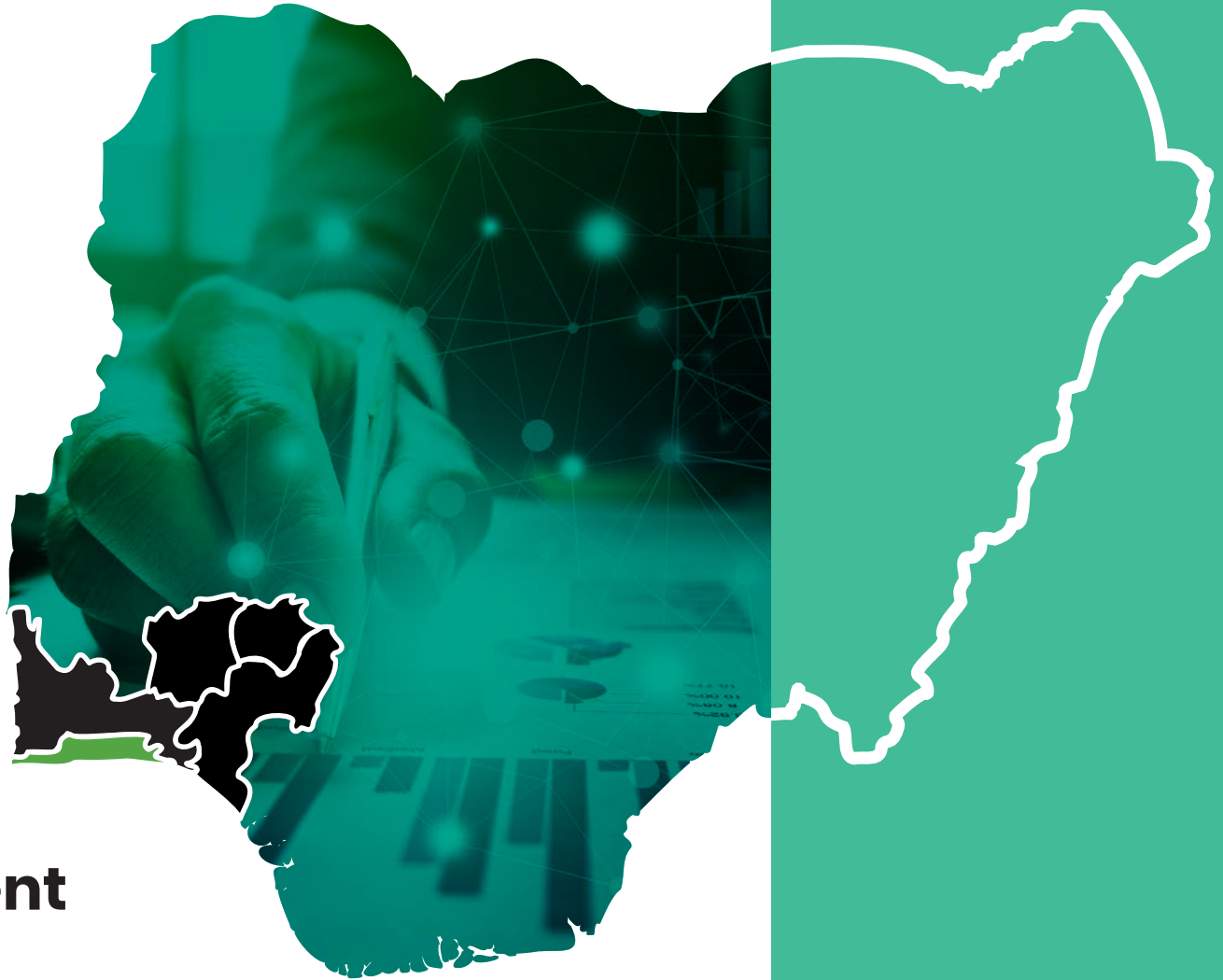


# Project & Programme Management



Courses	No of runs	Duration	Fee(N) Exclusive of VAT	Certification fee (\$)	Jan	Feb	Mar	Apr	May	Jun	Jul	Aug	Sep	Oct	Nov	Dec
<b>Project Management</b>		<b>Day(s)</b>														
Effective Project Management with Microsoft Project Simulation	5	4	N378,950			16-19		13-16		8-11		17-20		26-29		
Project Management Professional (PMP) Fast Track	6	5	N450,450	\$575	26-30		9-13		4-8		6-10		14-18			7-11
PRINCE2 Foundation & Practitioner (with Exams)	3	5	N521,950	\$950				20-24			13-17			5-9		
Certified Associate in Project Management	3	5	N500,500	\$950			23-27			1-5			21-25			
PRINCE2 Agile Foundation & Practitioner	4	5	N500,500	\$950					11-15		20-24		7-11			7-11
Agile Project Management Foundation & Practitioner -APMG	3	5	N500,500	\$950			9-13			15-19					9-13	
Project Analysis Tools & Techniques for Managing Risk & Uncertainty	3	3	N364,650	\$950				27-29					28-30		16-18	
PMI- Agile Certified Practitioner	3	3	N500,500							8-10				19-21		1-3
Scrum Master Certified (SMC)	3	2	N350,350	\$300			16-17		25-26		27-28			26-27		
Establishing & Managing the Project Management Office	2	3	N378,950			23-25						10-13				
Certified Telecommunications Project Management (CTPM)	2	5	N495,000				2-6						21-25			
Auditing Projects, Project Management & Project Risk	2	3	N378,950							22-24					30-2	
Improving Productivity through Quality Enhancement & Cost Reduction	2	4	N429,000					7-10								
Advanced Oil & Gas Project Economics, Risk & Decision Analysis	3	5	N507,650		26-30				18-22					12-16		
Lean Six Sigma White Belt	3	3	N500,500				16-18					17-19			30-2	
Lean Six Sigma Yellow Belt	3	5	N600,000			9-13					20-24			26-30		
Lean Six Sigma Green Belt	3	5	N600,000					20-24		29-3			14-18			
Lean Six Sigma Black Belt	3	5	N650,000				23-27				13-17				2-6	

Courses	No of runs	Duration	Fee(N) Exclusive of VAT	Certification fee (\$)	Jan	Feb	Mar	Apr	May	Jun	Jul	Aug	Sep	Oct	Nov	Dec
<b>Programme Management</b>		<b>Day(s)</b>														
Managing Successful Programmes (MSP) Foundation & Practitioner	3	5	N500,500	\$950			2-6			22-26			7-11			
Programme Management Professional	3	5	N572,000	\$800				13-17				10-14		19-23		
<b>Portfolio &amp; Investment Training</b>																
Portfolio & Investment Management Fundamentals	3	5	N436,150						11-15			17-21			9-13	
Mastering Portfolio Programmes & Projects	3	3	N500,500		26-28				18-20					5-7		
Certified Budget Analyst	3	5	N550,000			9-13					13-17					
Applied Investment Analysis: Technical Approaches to Financial Markets	2	4	N520,000				11-14						21-24			
Strategic Portfolio & Resource Management	3	5	550,000			2-6					13-17				9-13	



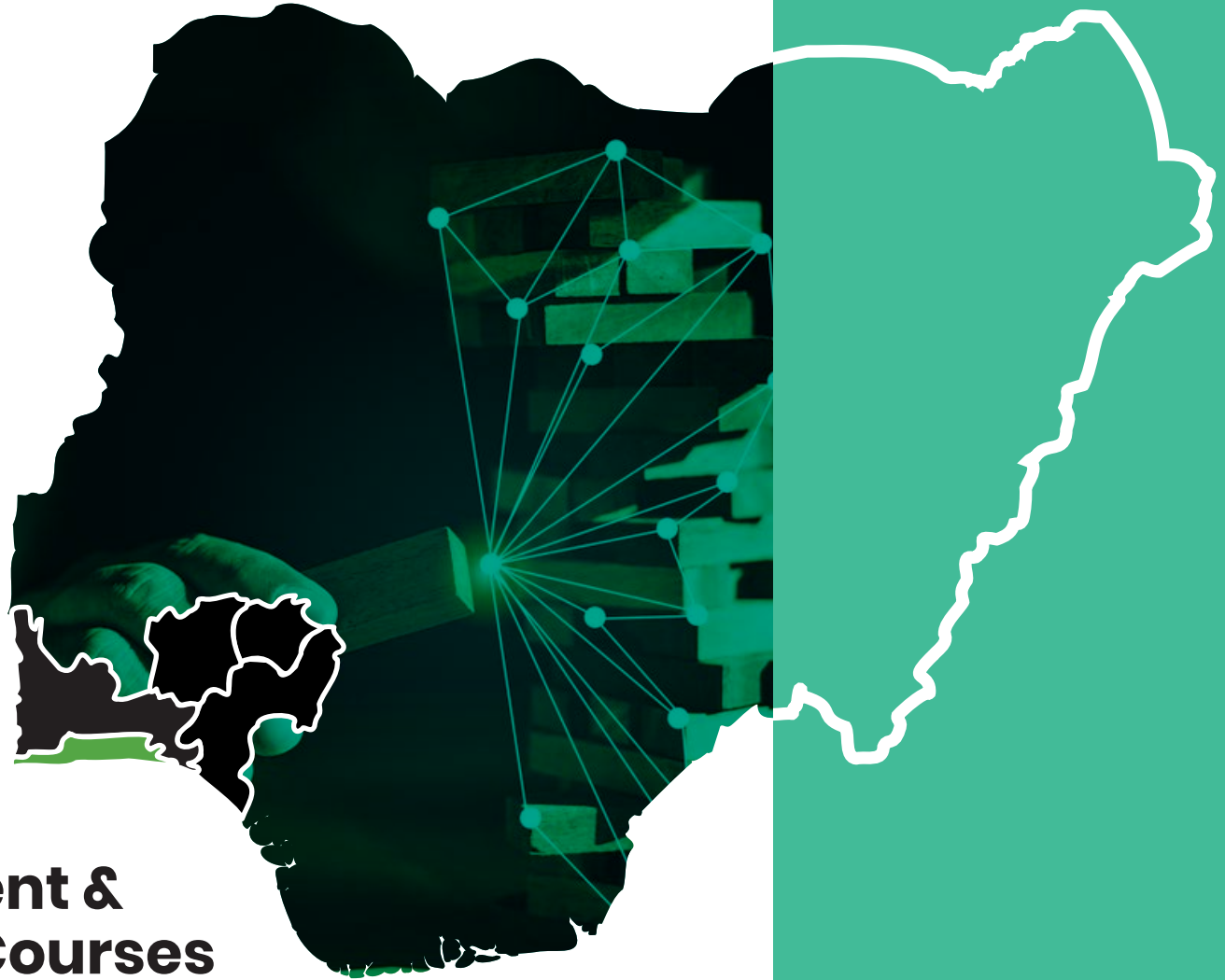
## **Business Analysis & Product Management Courses**



Courses	No of runs	Duration	Fee(N) Exclusive of VAT	Certification fee (\$)	Jan	Feb	Mar	Apr	May	Jun	Jul	Aug	Sep	Oct	Nov	Dec
Business Analysis		Day(s)														
Certified Business Analysis Professional (CBAP) Training	5	4	N526,240	\$750	26-29		9-12		18-21			3-6		12-15		
Entry Certificate in Business Analysis™ (ECBA™)	3	2	458,920	\$550			9-10		18-19			3-4		12-13		
Certification of Capability in Business Analysis™ (CCBA®)	3	3	464,750	\$600			9-11		11-13			3-5		12-14		
Business Analysis Fundamentals	5	3	N378,950		26-28		9-11		18-20			3-5		12-14		
The Business Intelligence Analyst Course	3	4	N371,800				23-26					17-20		5-8		
Advanced Business Analytics	3	5	N507,650			9-13				22-26			7-11			
Agile Business Analysis	3	3	N386,100		26-28				11-13					12-14		
Certified Business Process Model Notation	2	4	N526,240							1-4		10-13				
Certified Business Continuity Professional	3	4	N526,240					13-16			13-16				9-12	
Certified Business Analyst	2	4	N526,240		26-29							3-6				

Courses	No of runs	Duration	Fee(N) Exclusive of VAT	Certification fee (\$)	Jan	Feb	Mar	Apr	May	Jun	Jul	Aug	Sep	Oct	Nov	Dec
<b>Product Management</b>		<b>Day(s)</b>														
Product Management Fundamentals (Transitioning into Product Management)	3	3	N378,950				16-18						21-23			
The Complete Product Management Course	3	5	N536,250	\$755			23-27			22-26			21-25			
Scrum Product Owner	3	5	N536,250	\$500						1-5					2-6	
Product Ideation, Design & Management	3	4	N393,250		26-29						13-16			12-15		
Digital Product Management	4	5	N429,000			9-13			18-22				7-11		16-20	
Product Marketing	2	5	N393,250				23-27					10-14				
Product Strategy	2	5	N429,000							22-26				5-9		
Product Design	4	4	N407,550		26-29						13-16			12-15		
Advanced Product Management, Leadership & Communication	4	4	N543,400				9-12				20-23		7-10		9-12	
Agile Product Management	3	5	N429,000		26-30			7-11				17-21			30-4	

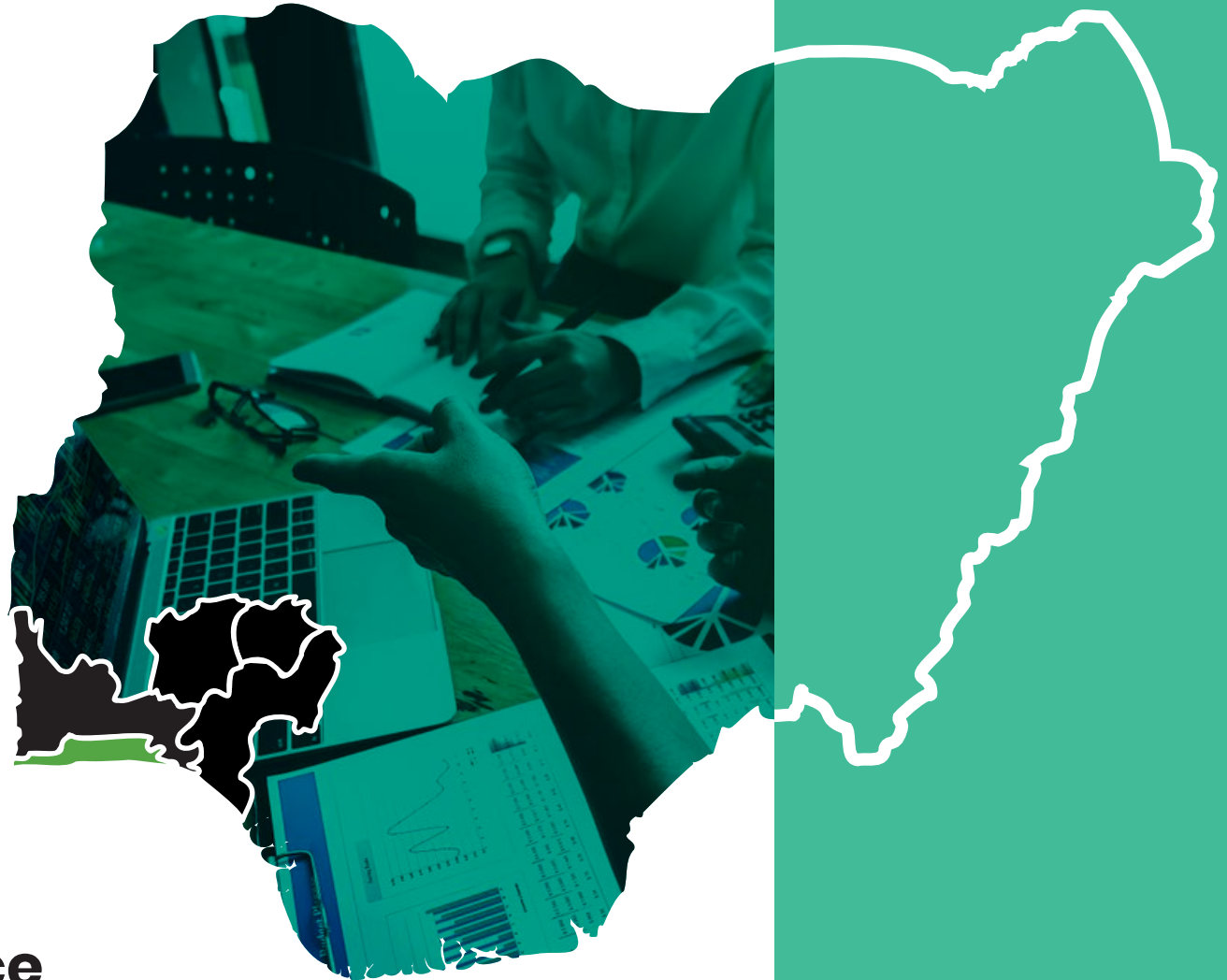




## Change Management & Risk Management Courses



Courses	No of runs	Duration	Fee(N) Exclusive of VAT	Certification fee (\$)	Jan	Feb	Mar	Apr	May	Jun	Jul	Aug	Sep	Oct	Nov	Dec
<b>Change Management</b>		<b>Day(s)</b>														
Introduction to Change Management	3	3	N385,000				16-18			22-24			7-9			
APMG-International Change Management™ Foundation & Practitioner	3	5	N500,500	\$630			23-27			22-26			7-11			
<b>Risk Management</b>																
PMI-Risk Management Professional	3	5	N500,500	\$555			9-13			1-5					16-20	
Project Risk Management	2	3	N336,000							1-5				12-14		
ISO 31000 Risk Management	3	4	N550,000	\$500				13-17		1-5				12-15		
Risk Management for Asset Managers	3	5	N572,000			23-27			19-23						9-13	
ISO 37001 Anti-Bribery Management Systems	3	4	N572,000	\$500			16-19		19-22				7-10			

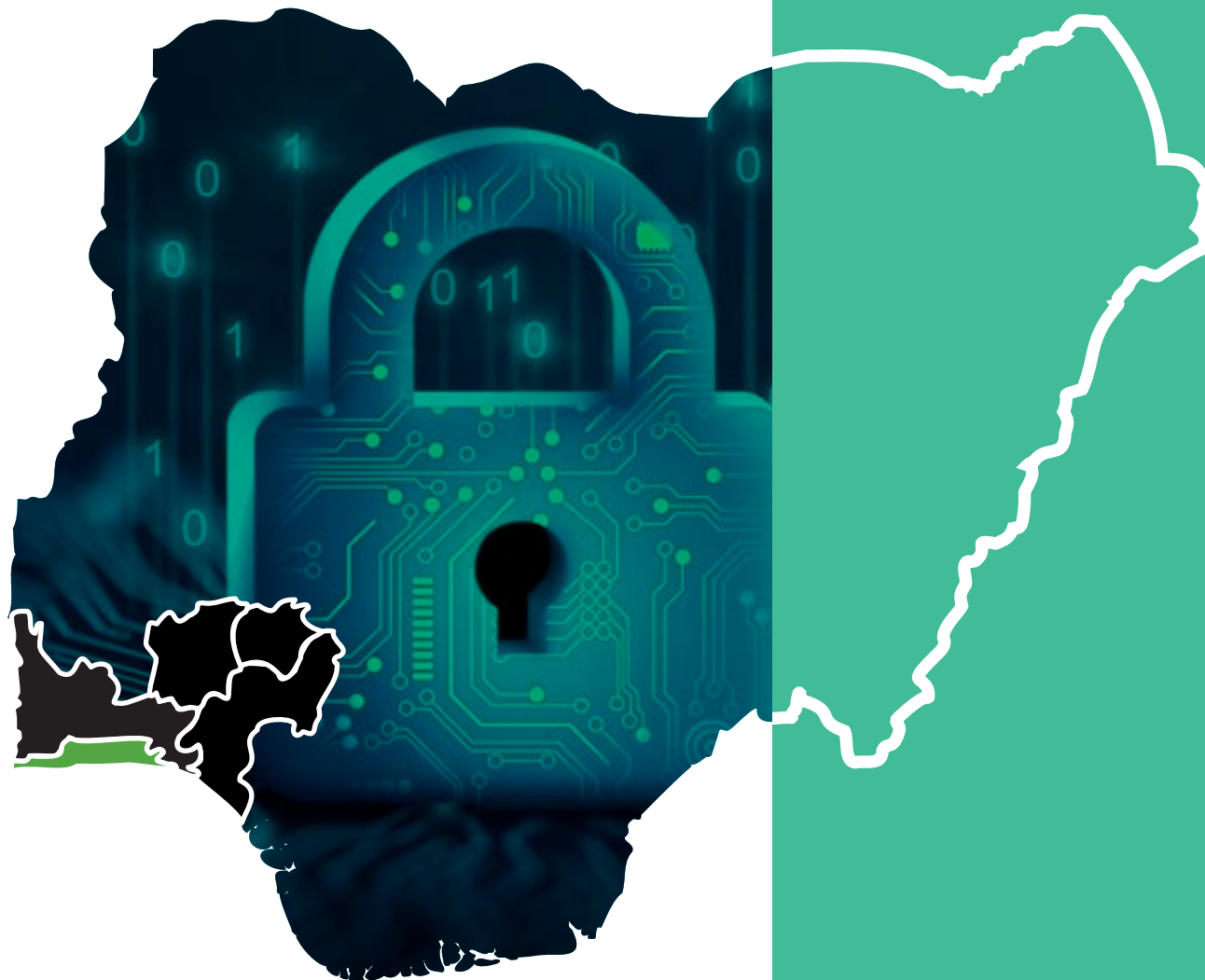


# Data Analytics & Business Intelligence



Courses	No of runs	Duration	Fee(N) Exclusive of VAT	Certification fee (\$)	Jan	Feb	Mar	Apr	May	Jun	Jul	Aug	Sep	Oct	Nov	Dec
<b>Data Analytics and Business Intelligence</b>		<b>Day(s)</b>														
Data Analytics, Business Intelligence & Visualisation with Power BI	5	4	N436,150		26-29				4-7			17-20		12-15	16-19	
Data & Business Analytics Fundamentals using Excel	3	4	N393,250					20-23			27-30				26-29	
Data & Business Analytics for Managers	3	3	N507,650			16-18					6-8			5-7		
Big Data Analytics with Microsoft R	3	5	N521,950				2-6			22-26					9-13	
Applied Data Science with Python Specialisation	3	5	N500,500				23-27			22-26			7-11			
Data Warehousing for Business Intelligence	3	5	N429,000						4-8			10-14			2-6	
SQL Programming	3	4	N429,000					13-16		1-4			14-17			
Introduction to Python Programming	3	4	N407,550			16-19			4-7			3-6				
Power BI for Excel Users	2	3	N421,850				9-11				13-15					
Power BI Advanced Analytics with R	2	3	N429,000					20-22		22-24						
Intermediate Power BI for Data Analysis	2	3	N429,000						18-20			17-19		5-7		
Power BI Advanced Analytics with Python	2	3	N500,500						18-20						23-25	
Certified Big Data Professional	2	5	N572,000			23-27							21-25			

Courses	No of runs	Duration	Fee(N) Exclusive of VAT	Certification fee (\$)	Jan	Feb	Mar	Apr	May	Jun	Jul	Aug	Sep	Oct	Nov	Dec
<b>Data Analytics and Business Intelligence</b>		<b>Day(s)</b>														
Database Design, Technique, & Tools with PL/SQL	5	4	N500,500		19-22				4-7			10-13		12-15	23-26	
Applying Machine Learning & Artificial Intelligence to Business Data	3	5	N550,550					13-17			13-17				26-30	
Data Recovery Tools & Techniques	3	3	N357,500			9-11					6-8			19-21		
Data Centers Design, Planning, & Implementation	3	5	N378,950				9-13			22-27					23-27	
Financial Analysis & Investments Fundamentals with Python Programming	2	5	N429,000			16-20							21-25			
Learning Programming with Microsoft Excel Macros & VBA	2	5	N429,000		19-23				11-15							
Certified Data Collection Technician	2	4	N429,000					13-16			20-23					
Data Analysis, Techniques, Modelling & Strategy	3	5	N500,500				2-6			22-26			14-18			
Big Data on AWS	2	4	N429,000						18-21						9-12	
Machine Learning Fundamental	2	5	N500,500			23-27						10-14				
Market Research, Customer Insights, & Competitor Analysis Using Digital Tools	2	4	N507,650						18-21					19-22		
Certified Hadoop Professional	2	5	N572,000				23-27								30-4	
Certified Data Analyst Professional	2	5	N520,000							1-5			7-11			

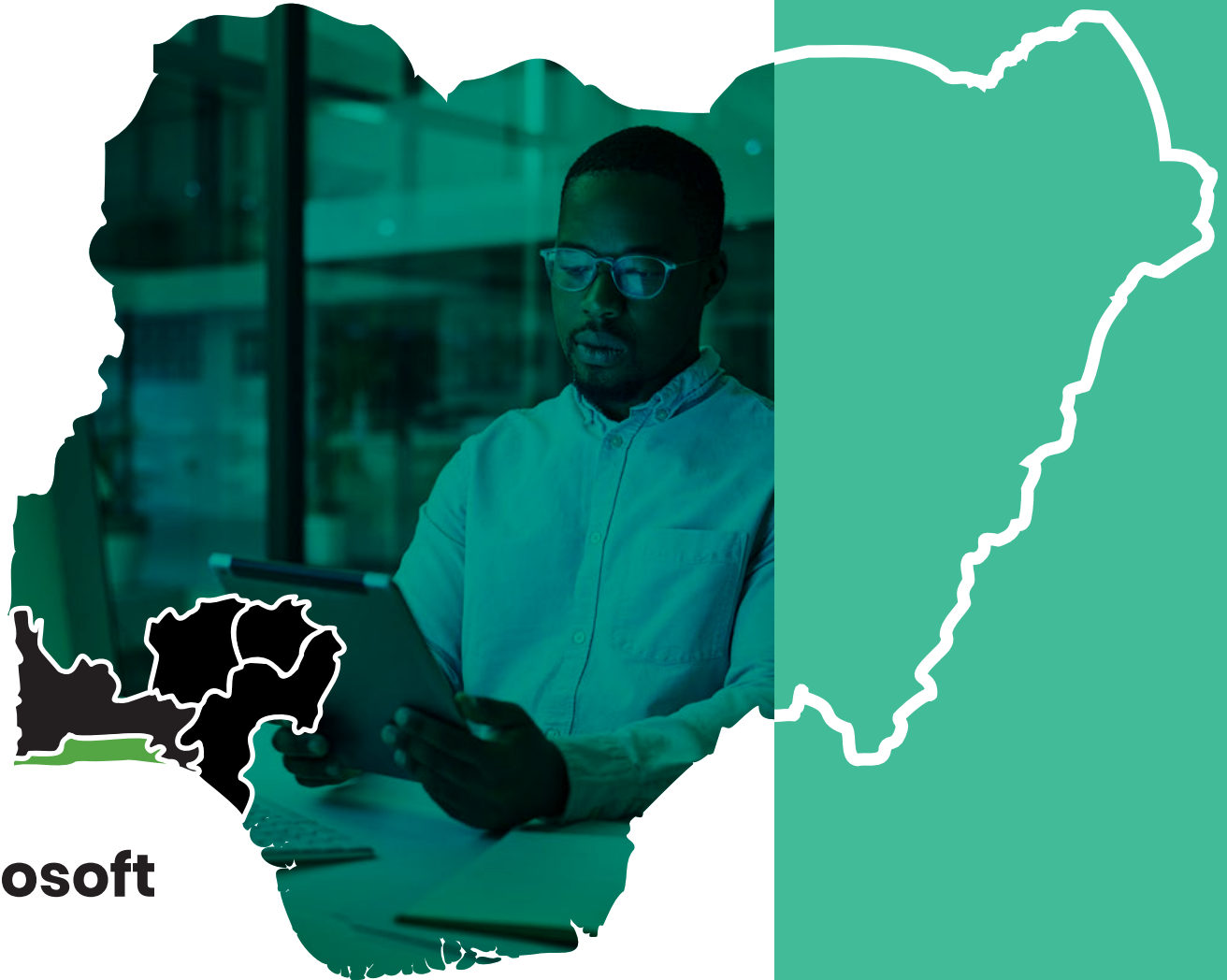


## Data Governance Programmes





Courses	No of runs	Duration	Fee(N) Exclusive of VAT	Certification fee (\$)	Jan	Feb	Mar	Apr	May	Jun	Jul	Aug	Sep	Oct	Nov	Dec
<b>Data Governance</b>		<b>Day(s)</b>														
Data Policies, Procedures & Operating Models	5	4	N507,650			9-12		13-16		1-4		10-13		5-8		
Data Management Fundamentals	5	2	N421,850		26-27		2-3		4-5		6-7		1-2		30-1	
Data Quality Management	3	5	N464,750					13-17			6-10			5-9		
Master & Reference Data Management	3	5	N507,650				9-13			22-26			7-11			
Data Modeling	4	3	N507,650						11-13		20-22		14-16		30-2	
Data Security & Data Privacy	3	3	N474,500				16-18			8-10					9-11	
Metadata Management	3	5	N507,650					13-17					21-25		9-13	
Data Architecture & Lifecycle Management	3	5	N487,500							22-26				12-16	30-4	
Data Security Management	3	4	N474,500				23-26				13-16				9-12	
Document & Content Management	3	5	N507,650					13-17		1-5				19-23		
Data Storage & Operations Management	3	3	N507,650					20-22				10-12			23-25	
Data Integration & Interoperability	3	3	N464,750						18-20		20-22			5-7		
Data Management for Executives	2	3	N550,000			16-18						10-12				



## IT Leadership & Microsoft Programmes



Courses	No of runs	Duration	Fee(N) Exclusive of VAT	Certification fee (\$)	Jan	Feb	Mar	Apr	May	Jun	Jul	Aug	Sep	Oct	Nov	Dec
<b>IT Leadership Training</b>		<b>Day(s)</b>														
Lead Digital Transformation Strategy Executive Programme (Ibom ICON Hotel & Golf Resort)	2	5	N3,025,000							1-5			14-18			
Mastering Disruptive Digital Leadership & Strategic Corporate Governance Programme (Yankari Game Reserve, Bauchi)	2	5	N3,025,000								13-17			12-16		
The Advanced Organisational Resilience Programme (Obudu Cattle Ranch)	2	5	N3,025,000									10-14			23-27	
The IT Executive Leadership Programme (Obudu Mountain Resort)	2	5	N3,025,000									10-14			30-4	
Harnessing AI for Breakthrough Innovation & Strategic Impact Programme (Ikogosi Warm Spring Resort)	2	5	N3,025,000								20-24			5-9		
Interpersonal Dynamics for High Performing Executives (KAP Resort Oyo State)	2	3	N3,025,000													
Leading Remote Cybersecurity Teams & Cybersecurity Resilience	2	5	N700,000			9-13						10-14				
<b>Microsoft Courses</b>																
Power BI Essentials: From Beginner to Advanced Analytics	3	5	N500,500				9-13			22-26				19-23		
Microsoft Power BI	3	5	N585,000		26-30				11-15				7-11			
Microsoft Power Automate	4	5	N643,500			16-20		13-17			6-10		14-18			
Microsoft Power Apps	4	5	N643,500				2-6		11-15					12-16		
Microsoft Azure	3	5	N643,500					13-17		1-5			14-18			

Courses	No of runs	Duration	Fee(N) Exclusive of VAT	Certification fee (\$)	Jan	Feb	Mar	Apr	May	Jun	Jul	Aug	Sep	Oct	Nov	Dec
Microsoft Courses		Day(s)														
Microsoft Azure Data Engineer	3	5	N643,500						18-22			10-14		5-9		
Microsoft Azure AI Developer	3	5	N643,500					13-17			13-17				30-4	
Microsoft Exchange Online	3	5	N572,000				9-13						14-18		9-13	
Microsoft SharePoint Online	3	5	N572,000					13-17			6-10			12-16		
Microsoft One Drive for Business (ODB)	3	5	N572,000				23-27				20-24				23-27	
Microsoft Azure Fundamental	3	1	N500,500							1				19		
Designing & Implementing Microsoft DevOps Infrastructure	2	5	N643,500		26-30				11-15							
Microsoft .NET	4	5	N643,500				9-13		4-8					26-30		
Microsoft Desktop	3	5	N643,500					13-17		22-26			21-25			
Microsoft Exchange Server	3	5	N643,500						11-15			10-14		12-16		
Microsoft Certified: Azure Solutions Architect	3	5	N572,000						18-22			10-14		12-16		
Azure Database Administrator Associate - DP-300	3	5	N572,000					13-17			13-17				30-4	
Power Automate Business Processes	3	5	N643,500				9-13						14-18		9-13	
Oracle Database SQL	3	5	N643,500					13-17			6-10			12-16		
Azure Data Scientist Associate	3	5	N572,000				23-27				20-24				9-13	
AZ-400: Get Started on a DevOps Transformation Journey	3	5	N572,000											26-30	30-4	
Azure DevOps Engineer Expert - AZ-400	2	5	N643,500		26-30				11-15							
Microsoft Security, Compliance, & Identity Fundamentals	4	5	N643,500				9-13		4-8					26-30		
Microsoft Security Operations Analyst	3	5	N643,500					13-17		22-26			21-25			
Microsoft Azure Security Administrator - AZ-500	3	5	N643,500						11-15			10-14		12-16		
Flutter Introduction & Basics	3	3	N533,500			9-11				22-24					23-25	
.NET Development Basics	2	3	N485,000				23-25				6-8				30-2	
API Development Course	2	5	N572,000						11-15				14-18			

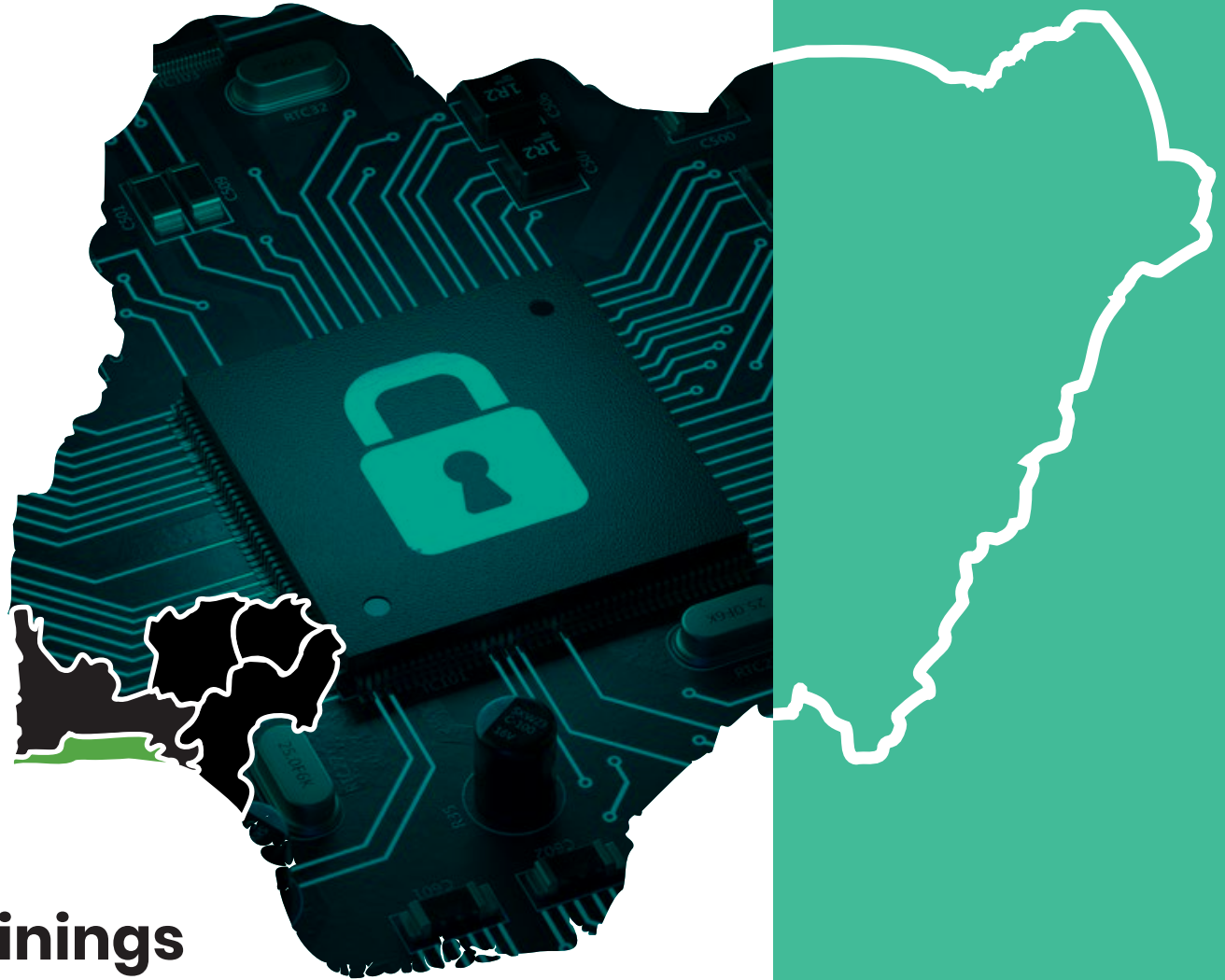
# Information Security & Payment Systems Programmes



Courses	No of runs	Duration	Fee(N) Exclusive of VAT	Certification fee (\$)	Jan	Feb	Mar	Apr	May	Jun	Jul	Aug	Sep	Oct	Nov	Dec
Information Security		Day(s)														
(ISC)2 CISSP CBK Review Seminar (with exam)	3	5	N550,500	\$850			2-6				13-17			19-23		
Certified in Cybersecurity	4	2	N360,000	\$400			2-3		11-12		13-14		7-8			
Business Continuity Management for Senior Executives	2	4	N543,840							1-4					16-19	
Disaster Recovery Professional (DRP)	3	5	N500,940	\$500		9-13			11-15					26-30		
Ethical Hacking & Counter Measure (CEH) & Certification	4	5	N550,550	\$850				13-17		22-26		3-7			23-27	
Certified Hacking Forensic Investigator (CHFI) & Certification	3	5	N550,550	\$850			9-13				6-10			12-16		
Information Security Incident Investigation & Management	2	5	N507,650					13-17				17-21				
BeingCert Linux Certified Professional	2	4	N572,000						11-14						16-19	
Certified Data Protection Officer	4	4	N543,400	\$500		16-19		13-16			20-23		7-10			
Cyber-Security & Data Privacy	3	5	N529400				23-27				27-31		14-18		2-6	
Certified Network Infrastructure Technician (CNIT®)	3	5	N572000			23-27				22-26		10-14				
Strategic ICT Management for IT & Non -IT Managers	2	4	N429000						18-21					19-22		
IBM Cybersecurity Analyst Professional	2	4	N429000			16-19						17-20				
Data Governance	3	3	N440000	\$1000		9-11			4-6				14-16			
Data Management for Executives	4	3	N550,550					13-15		22-24		10-12		5-7		

Courses	No of runs	Duration	Fee(N) Exclusive of VAT	Certification fee (\$)	Jan	Feb	Mar	Apr	May	Jun	Jul	Aug	Sep	Oct	Nov	Dec
<b>Information Security</b>		<b>Day(s)</b>														
ISO 27701 Privacy Information Management System	3	4	N500,500	500		9-12						17-20		19-22		
ISO/IEC 29100 Privacy Framework Foundation	3	4	N429,000				9-12			15-18				12-15		
ISO/IEC 29100 Certified Lead Privacy Implementer	3	4	N529,000	500			9-12			15-18				12-15		
Internet of Things for Business Professionals	3	5	N421,850			2-6				1-5					23-27	
<b>Payment Systems</b>																
Fundamentals of Payment Industry	3	3	N364,650		<p><b>These trainings are strictly In-house.</b>  <b>Kindly reach out to:</b>  <b>enquiry@phillipsconsulting.net</b>  <b>+2349060000804</b></p>											
Payment Card Industry Data Security Standard Awareness (PCI DSS)	2	5	N357500													
Cybersecurity & Fraud Detection in Payment Systems	3	5	N572000													
Data Analytics for Payment Systems	2	4	N572000													
Payment Systems Stakeholder Engagement & Communication	2	5	N572000													
Payment Systems Leadership & Management Skills	3	4	N572000													
Ethical Practices & Corporate Governance in Payment Systems	2	5	N572000													





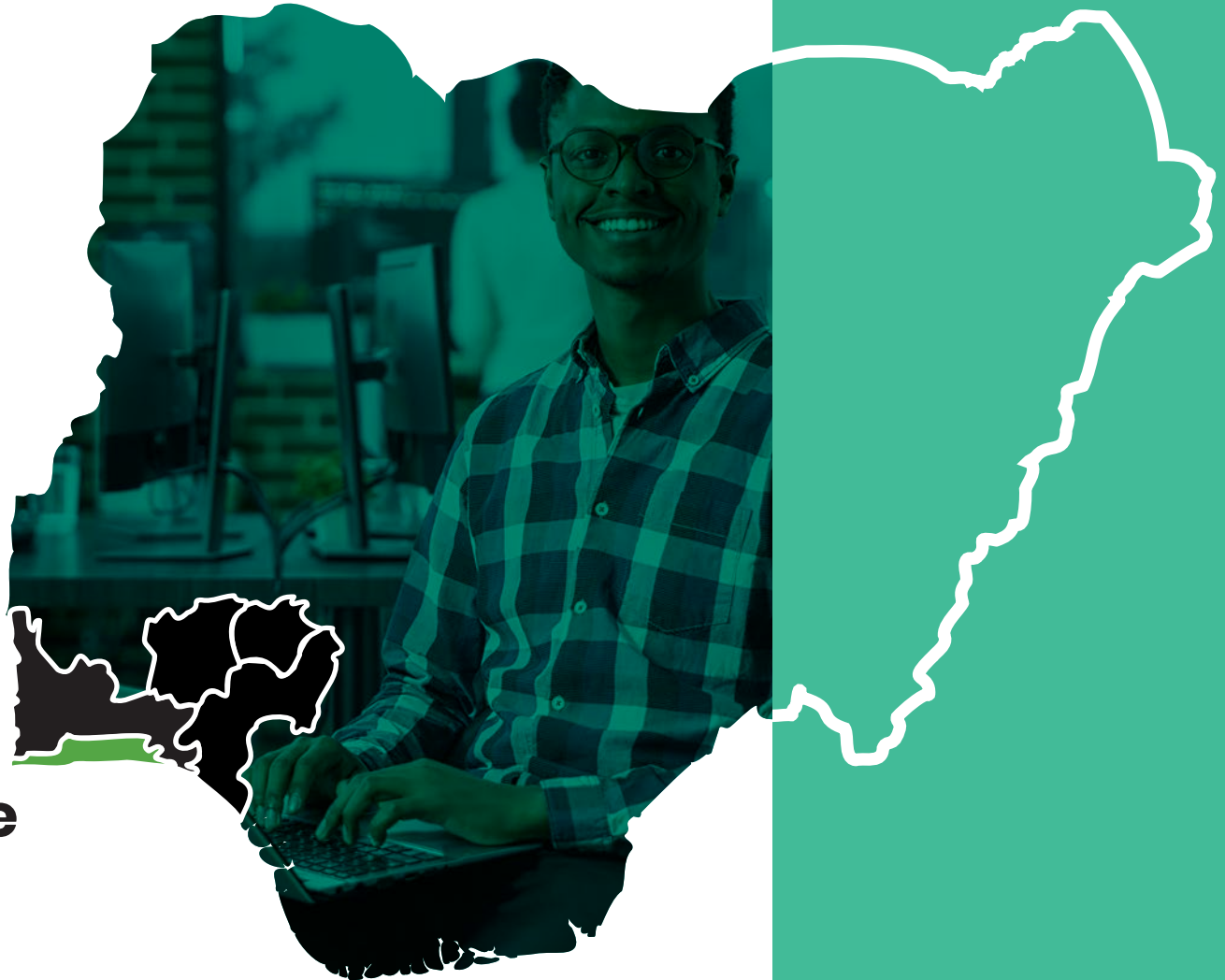
# Cybersecurity & Cloudsecurity Trainings



Courses	No of runs	Duration	Fee(N) Exclusive of VAT	Certification fee (\$)	Jan	Feb	Mar	Apr	May	Jun	Jul	Aug	Sep	Oct	Nov	Dec
<b>Cyber Security</b>		<b>Day(s)</b>														
Certified ISO 27032 - Cyber Security Lead Manager	4	4	N507650	\$500			10-13				9-12		15-18		17-20	
Cybersecurity Fundamentals for Business	4	3	N364650				10-12				9-11		15-17		17-19	
E-Council Penetration Testing: A Complete Hands-on Approach	3	5	N521950			24-28			5-9		21-25					
CompTIA Linux+	2	5	N572000					7-11			14-18					
CompTIA Network+	2	5	N572000				17-21					11-15				
CompTIA Security+	2	5	N572000						12-16				22-26			
CompTIA A+	2	5	N572000			17-21				16-20						
EC-Council Certified Security Analyst (ECSA)	2	5	N607750						26-30					6-10		
Licensed Penetration Tester (LPT)	3	5	N650,650					7-11			28-1					1-5
Cybersecurity in Oil & Gas	3	5	N493,350						19-23				8-12		24-28	
Cybersecurity Essentials for Non-IT Professionals	2	4	N440000													
IATA Aviation Cybersecurity	2	3	N550,550							2-4			1-3			
BeingCert SOC Analyst	2	5	N611050				<b>These trainings are strictly In-house. Kindly reach out to:</b> <b>enquiry@phillipsconsulting.net</b> <b>+2349060000804</b>									
BeingCert Certified Cybersecurity Professional	3	5	N644,050													
BeingCert Certified Pentest Professional	3	5	N544,500													

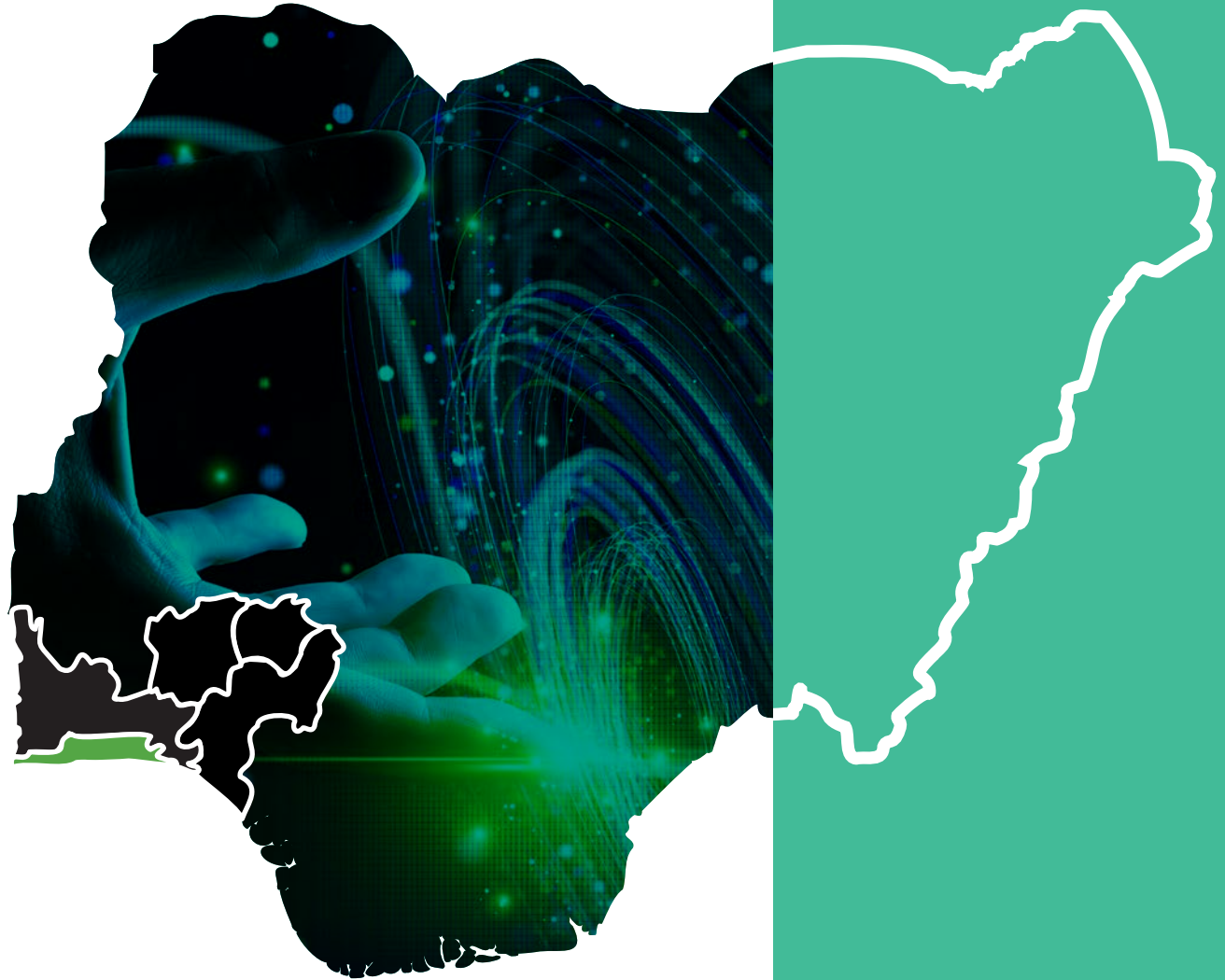
Courses	No of runs	Duration	Fee(N) Exclusive of VAT	Certification fee (\$)	Jan	Feb	Mar	Apr	May	Jun	Jul	Aug	Sep	Oct	Nov	Dec
<b>Cloud Security Trainings (Inplant)</b>		<b>Day(s)</b>														
Certified Cloud Security Professional (CCSP)	4	5	N564,850	\$750				13-17		15-19		10-14		19-23		
BeingCert Certified Cloud Professional	3	5	N550,000					20-24		22-26				12-16		
Certified Cloud Security Analyst	2	3	N440,000						11-13			17-19			23-25	
<b>AWS Trainings</b>																
AWS Cloud Practitioner	2	4	N572,000				23-26					3-6				
AWS Solutions Architect	2	5	N572,000					20-24					21-25			
AWS Developer	2	5	N572,000						18-22					26-30		
AWS DevOps Engineer	2	5	N572,000							29-3					16-20	
AWS Operations	2	5	N572,000								20-24					7-11

# **Fraud Detection, Business Solutions, Machine Learning & Software Development Trainings**



Courses	No of runs	Duration	Training Fee(N)	Certification fee (\$)	Jan	Feb	Mar	Apr	May	Jun	Jul	Aug	Sep	Oct	Nov	Dec
<b>Software Development &amp; Security</b>		<b>Day(s)</b>														
Secure Software Development & Certified Software Security Lifecycle Professional Certification( CSSLP)	3	5	N564,850	\$750				13-17		22-26			14-18			
Secure Coding	3	4	N536,250					20-24			27-31			19-22		
Cloud Services & DevOps Basic	2	5	N572,000			<b>These trainings are strictly In-house. Kindly reach out to::</b> <b>enquiry@phillipsconsulting.net</b> <b>+2349060000804</b>										
Software Design Principles & Software Architecture	2	5	N513,000													
BeingCert Certified Secure Coding Professional	2	4	N572,000													
BeingCert Software Testing Professional	2	5	N572,000													
Software Testing Masterclass	3	5	N521,950													
BeingCert Certified Linux Professional	3	5	N572,000													
BeingCert Certified Full Stack Developer	2	5	N572,000													
BeingCert Certified Web Developer	2	5	N572,000													
BeingCert Python Developer	2	5	N572,000													
BeingCert Certified DevOps Professional	3	5	N572,000													
Investment Management with Python & Machine Learning Specialisation	2	5	N585,000													

Courses	No of runs	Duration	Training Fee(N)	Certification fee (\$)	Jan	Feb	Mar	Apr	May	Jun	Jul	Aug	Sep	Oct	Nov	Dec
<b>Banking Solutions</b>		<b>Day(s)</b>														
E-business Solutions & Digital Transaction Banking Trainings	3	4	N500,500				16-19					10-13		12-15		
Open Banking	3	4	N429,000		26-29					15-18					16-19	
<b>Fraud Detection</b>																
Excellence in Fraud Investigation Detection & Control Programme	2	4	N536,250					13-16	11-14				14-17			
IT Auditing & Fraud Detection	2	3	N464,750						18-20			17-19				
Fraud Risk Management	2	4	N464,750							22-25				26-29		
Certified Fraud Examiner	2	4	N622,050				2-5				6-9					
<b>Machine Learning</b>																
Introduction to Machine Learning in Production	3	5	N493,350				9-13				20-24				10-14	
Investment Management with Python & Machine Learning Specialisation	2	5	N643,500						4-8			3-7				



## SAP & Salesforce Trainings





Courses	No of runs	Duration	Fee(N) Exclusive of VAT	Certification fee (\$)	Jan	Feb	Mar	Apr	May	Jun	Jul	Aug	Sep	Oct	Nov	Dec
<b>SAP Courses</b>		<b>Day(s)</b>														
SAP Ticketing	2	3	N429,000							1-3				12-14		
SAP Finance & Controlling	2	5	N572,000			23-27					6-10					
SAP Data Security	2	5	N572,000				2-6						7-11			
SAP Data Hub	2	5	N572,000					13-17				3-7				
SAP HANA	3	5	N572,000		26-30			20-24			13-17					
SAP BusinessObjects	3	5	N572,000			23-27		20-24					14-18			
SAP ERP	3	5	N572,000				9-13			15-19			21-25			
SAP ABAP	3	5	N572,000					13-17			20-24		14-18			
SAP Business Warehouse	3	5	N572,000						11-15			17-21		26-30		
SAP Supply Chain Management	3	5	N572,000		19-23						27-31				16-20	
SAP NetWeaver	3	5	N572,000			9-13				29-3				19-23		

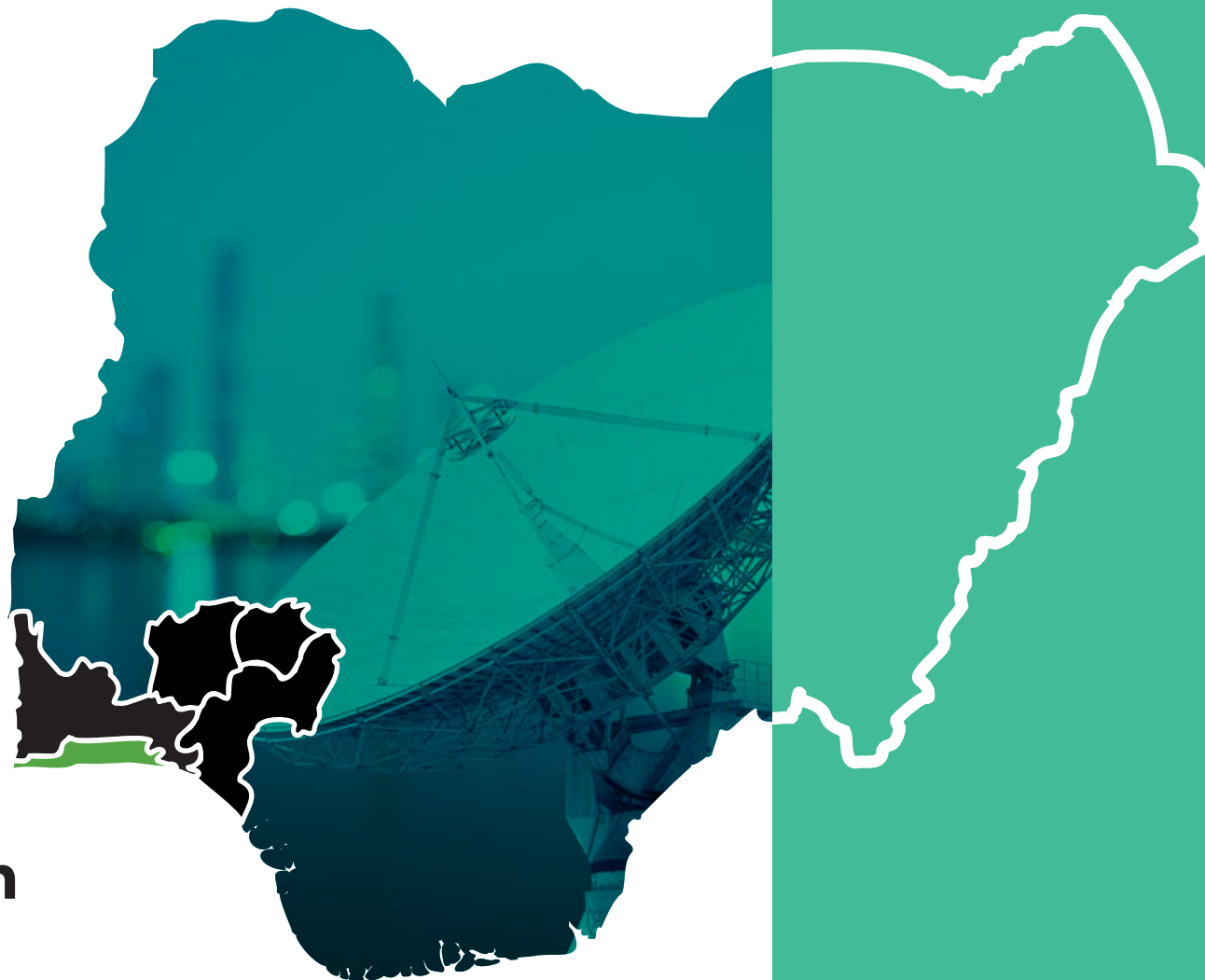
Courses	No of runs	Duration	Fee(N) Exclusive of VAT	Jan	Feb	Mar	Apr	May	Jun	Jul	Aug	Sep	Oct	Nov	Dec
SalesForce Courses		Day(s)													
SalesForce Beginner Administrator (With exams)	3	3	N572,000		16-18				15-17		17-19				
SalesForce App Builder	3	5	N572,000			9-13		11-15					19-23		
SalesForce Platform Developer 1	3	4	N572,000				20-23		22-25			14-17			
SalesForce Platform Developer 2	4	5	N572,000					18-22		6-10			26-30		7-11



# Cisco Trainings



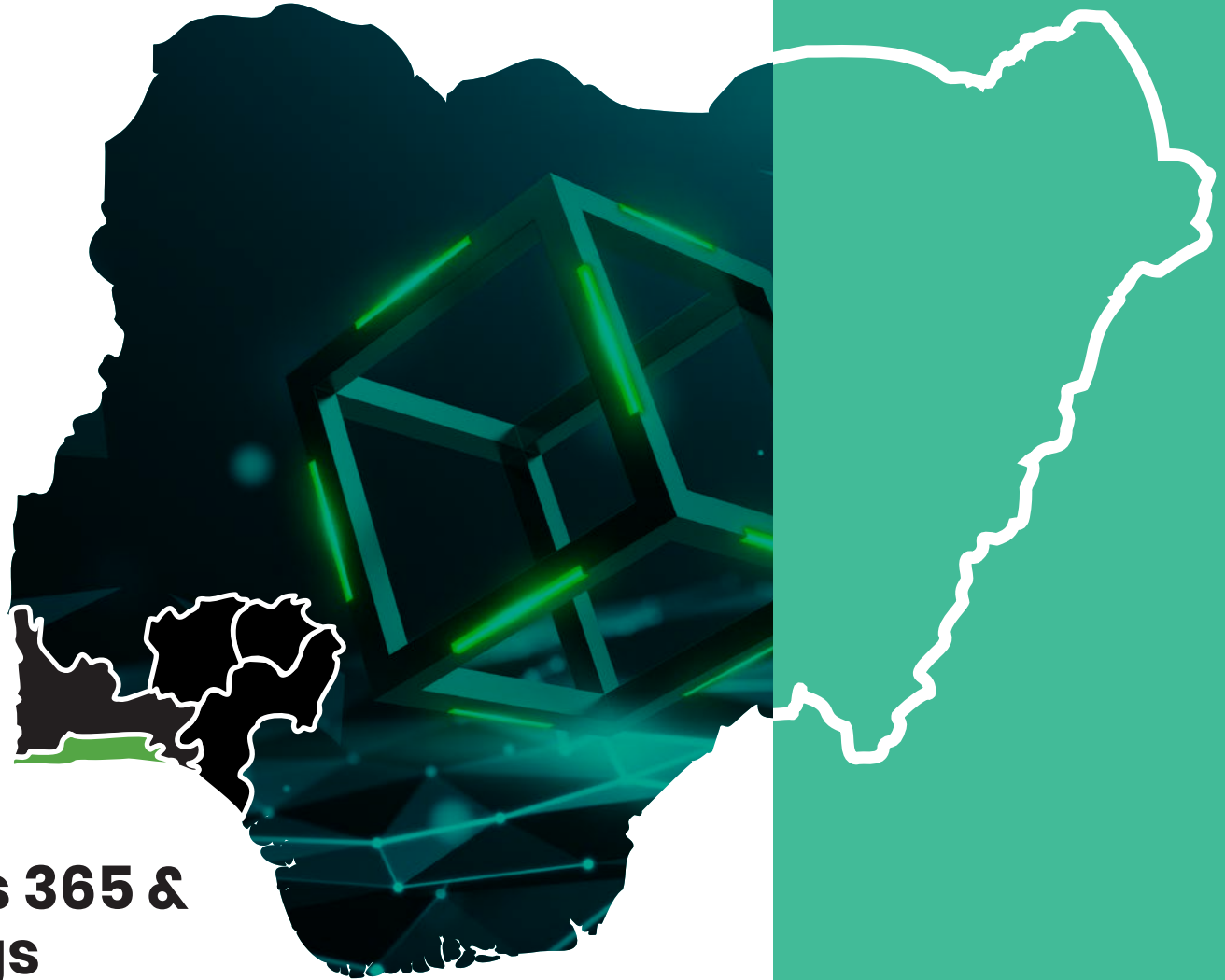
Courses	No of runs	Duration	Training Fee(N)	Certification fee (\$)	Jan	Feb	Mar	Apr	May	Jun	Jul	Aug	Sep	Oct	Nov	Dec
<b>CISCO Trainings</b>		<b>Day(s)</b>														
Cisco Cloud	2	5	N572,000			<p><b>These trainings are strictly implant.</b>  <b>Kindly reach out to: enquiry@phillipsconsulting.net</b>  <b>+2349060000804</b></p>										
Cisco Collaboration	2	5	N572,000													
Cisco Data Center	2	5	N572,000													
Cisco Enterprise	2	5	N572,000													
Cisco Wireless	2	5	N572,000													
Cisco Unified	2	5	N572,000													
Cisco Service Provider	2	5	N572,000													
Cisco Security	2	5	N572,000													
Cisco Routing & Switching	2	5	N572,000													
Cisco Network Automation	2	5	N572,000													
Cisco Certified Network Associate Enterprise (200-301)	2	5	N572,000													
Cisco Certified Network Professional Enterprise (350-401 ENCORE)	2	5	N572,000													
Cisco Certified Network Professional Enterprise (300-410 ENARSI)	2	5	N572,000													



# Telecommunication Programmes



Courses	No of runs	Duration	Training Fee(N)	Certification fee (\$)	Jan	Feb	Mar	Apr	May	Jun	Jul	Aug	Sep	Oct	Nov	Dec
<b>Telecom Trainings</b>		<b>Day(s)</b>														
Digital Procurement & Vendor Management	5	5	N564,850		19-23				4-8			10-14		5-9	9-13	
Digital Procurement Transformation	3	5	N572,000					13-17			6-10					7-11
Spend Analysis Tools	3	5	N605,000			9-13					20-24			26-30		
e-Procurement Systems	3	5	N572,000				9-13			1-5					23-27	
Contract Management Software	3	5	N572,000				2-6			15-19			7-11			
Security & Surveillance Technologies	3	4	N550,000						18-21			17-20			30-3	
Artificial Intelligence in Legal Research	3	5	N572,000					20-24		22-26			21-25			
Patent Analysis & Intellectual Property (IP) Management	3	5	N572,000			23-27			11-15			31-4				
Telecom Standards & Protocols	2	5	N605,000				9-13				27-31					
Telecom Regulatory Framework	2	5	N507,650					20-24		29-3						
Telecom Law & Regulations	3	5	N572,000						4-8			10-14		12-16		
Spectrum Management	2	4	N572,000						11-15						16-20	
The Committee of Sponsoring Organisations (COSO Framework)	3	4	N572,000			16-19					27-30			19-22		
Cybersecurity & Data Privacy in the Telecom Industry	3	5	N572,000					13-17		15-19						7-11

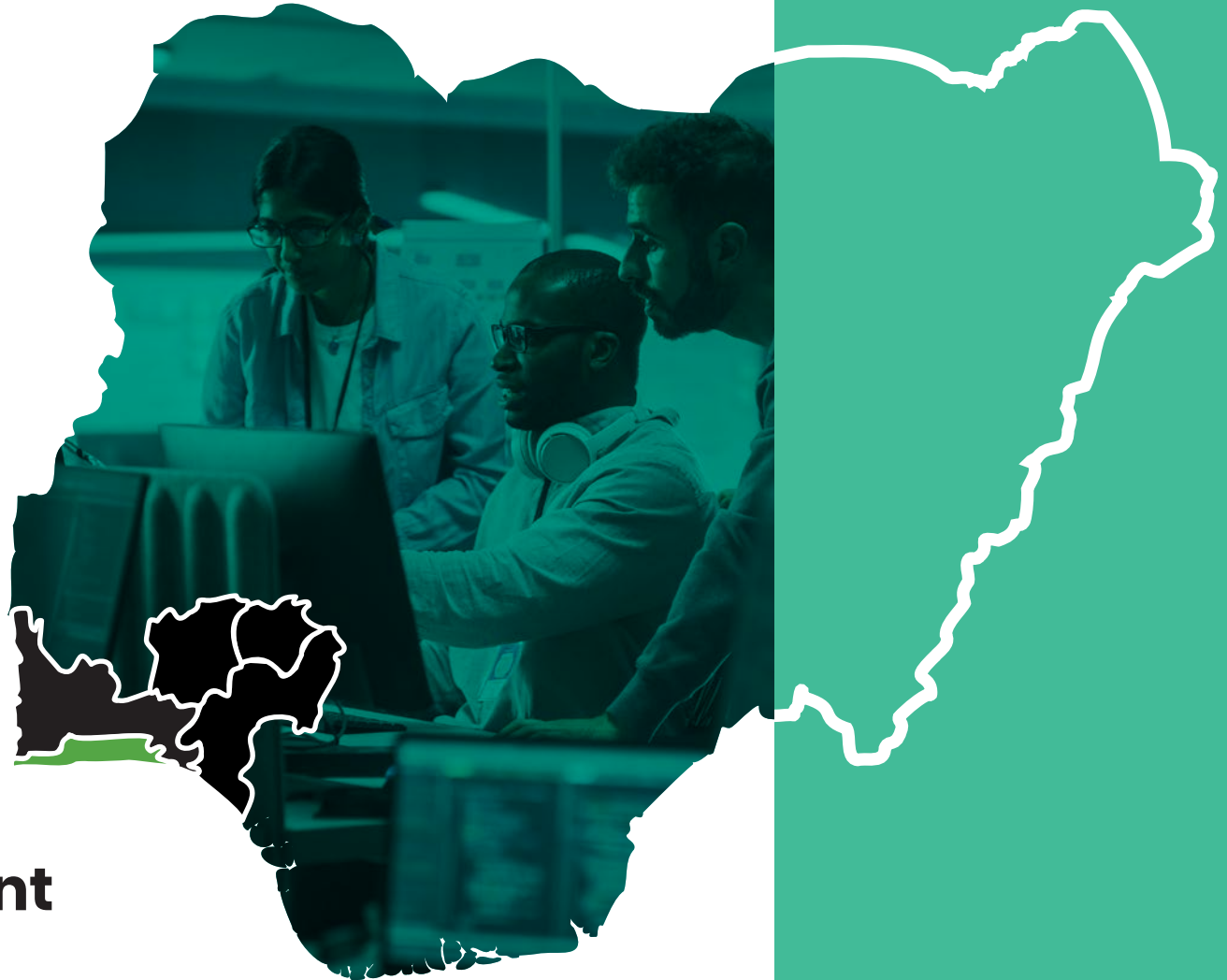


## **Microsoft Dynamics 365 & Blockchain Trainings**





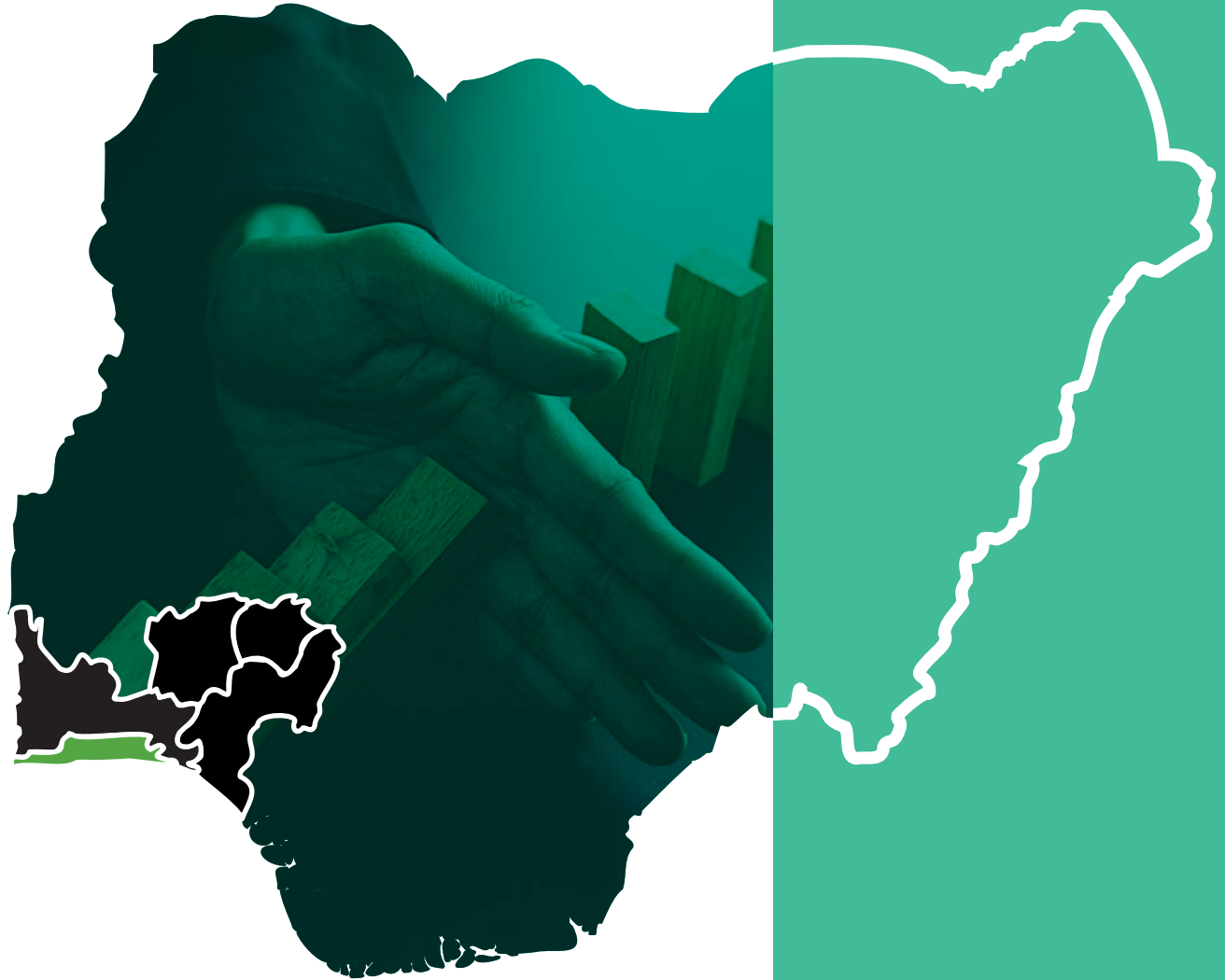
Courses	No of runs	Duration	Fee(N) Exclusive of VAT	Certification fee (\$)	Jan	Feb	Mar	Apr	May	Jun	Jul	Aug	Sep	Oct	Nov	Dec
<b>Microsoft Dynamics 365</b>		<b>Day(s)</b>														
Microsoft Dynamics 365 Commerce	3	5	N572,000		<p><b>These trainings are strictly in-house. Kindly reach out to:</b>  <b>enquiry@phillipsconsulting.net</b>  <b>+2349060000804</b></p>											
Microsoft Dynamics 365 Supply Chain	3	5	N572,000													
Microsoft Dynamics 365 Finance	3	5	N572,000													
Microsoft Dynamics 365 HR	3	5	N572,000													
Microsoft Dynamics 365 Customer Insights	3	5	N572,000													
Microsoft Dynamics 365 Customer Relationship Management	3	5	N572,000													
Customisation & Integration of Enterprise Application with Microsoft	4	5	N572,000													
<b>Blockchain &amp; Digital Currency</b>																
Certified Blockchain Developer	3	5	N572,000													
Certified Enterprise Blockchain Professional	4	5	N572,000													
Trading with Technical Analysis	2	4	N500,500													



## **IT Governance & Service Management Programmes**



Courses	No of runs	Duration	Fee(N) Exclusive of VAT	Certification fee (\$)	Jan	Feb	Mar	Apr	May	Jun	Jul	Aug	Sep	Oct	Nov	Dec
<b>IT Governance and Service Management</b>		<b>Day(s)</b>														
IT Strategy & Governance	4	3	N407,550				9-11		18-20			10-12		19-21		
Certified in Governance & Enterprise Information Technology (CGEIT)	4	5	N550,000	\$1000			9-13		18-22			10-14		19-23		
Executive Awareness in IT Service Management	3	3	N407,550				30-1				6-8					
Business Architecture Design for Non-IT	3	4	N426,140					13-16			13-16					7-10
Capability Maturity Model Integration for Development (CMMI- DEV)	3	5	N572,000				2-6			22-26			21-25			
COBIT® 2019 Foundation	4	2	N357,500	\$300			9-10			15-16			7-8		9-10	
COBIT® 2019 Design & Implementation	4	3	N500,500	\$400			9-11			15-17			7-9		9-11	
ITIL 4® Foundation & Certification (with exam)	6	3	N328,900	\$400	19-21			20-22		8-10		10-12		12-14		7-11
ITIL Specialist (Create, Deliver & Support)	3	3	N572,000	\$600			9-11			15-17			21-23			
ITIL Specialist (Drive Stakeholder Value)	2	3	N572,000	\$600								17-19			23-25	
ITIL Specialist (High Velocity IT)	3	3	N572,000	\$600					18-20		20-22			19-21		
ITIL Specialist (Direct Plan & Improve)	3	3	N572,000	\$600				27-29				31-2				
ITIL Leader (Digital & IT Strategy)	2	3	N572,000	\$600							27-29			26-28		
ITIL Strategic Leader (SL)	2	3	N643,500	\$600					4-6			10-12				
ITIL Managing Professional (MP)	2	3	N643,500	\$600				13-15								7-11
ISO 38500 IT Corporate Governance	3	4	N500,500	\$600					4-6				28-30		16-18	

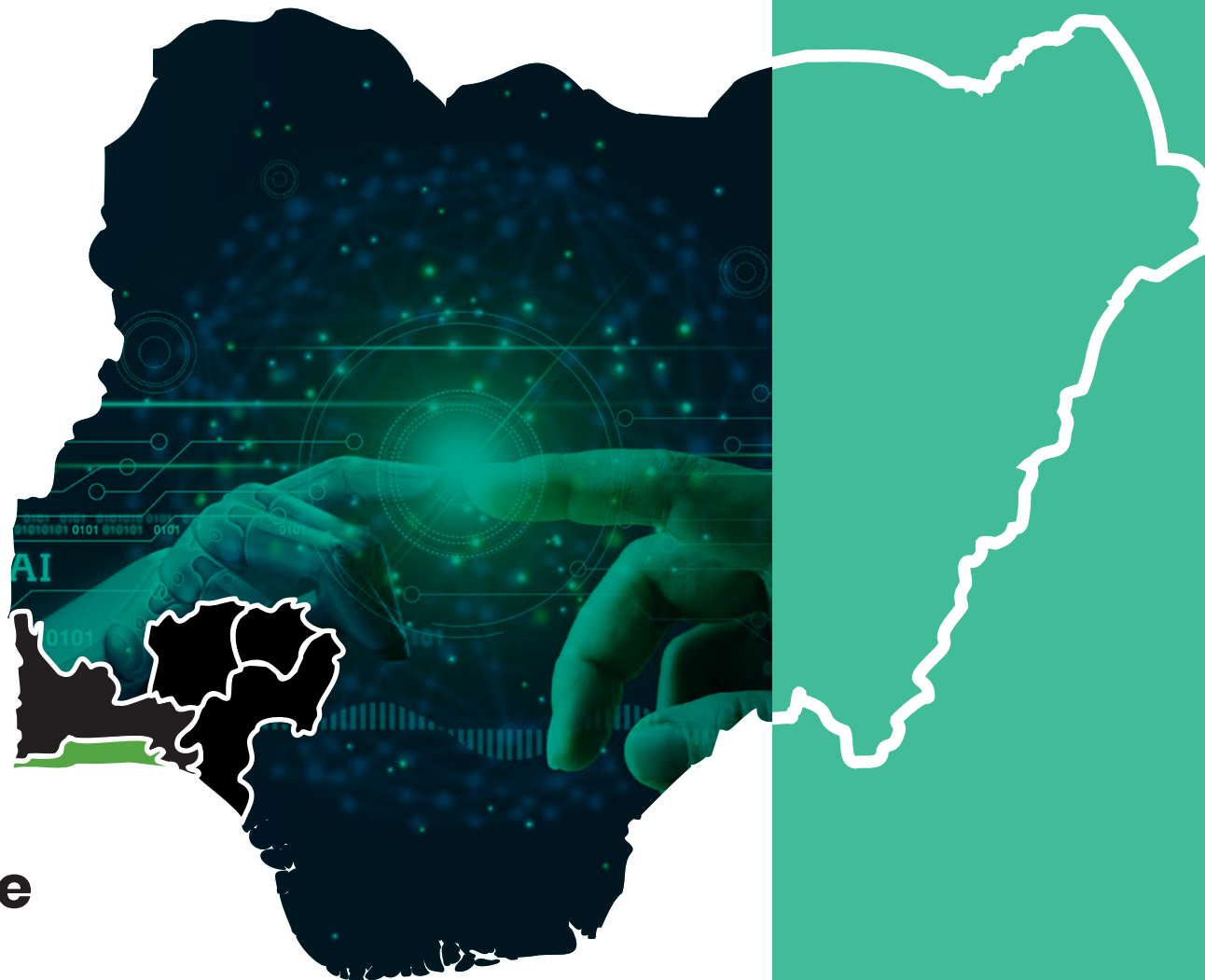


## IT Risk & GRC Programmes



Courses	No of runs	Duration	Training Fee(N)	Certification fee(\$)	Jan	Feb	Mar	Apr	May	Jun	Jul	Aug	Sep	Oct	Nov	Dec
<b>IT Risk &amp; Compliance</b>		<b>Day(s)</b>														
OHSAS 45001 (Occupational Health & Safety Management Systems) Lead Auditor & Certification	3	5	N550,000	\$500		9-13						3-7			9-13	
OHSAS 45001 (Occupational Health & Safety Management Systems) Lead Implementer & Certification	3	5	N550,000	\$500			9-13			22-26			7-11			
ISO 50001 (Energy Management System) Lead Auditor & Certification	3	5	N550,000	\$500		16-20						17-21			2-6	
ISO 50001 (Energy Management System) Lead Implementer & Certification	3	5	N550,000	\$500			2-6				6-10		14-18			
ISO 55000 Asset Management System	3	5	N550,000	\$500				13-17		29-3				19-23		
ISO/IEC 20000 Lead Auditor & Certification	3	5	N550,000	\$500				20-24			27-31					7-11
ISO/IEC 20000 Lead Implémenter & Certification	3	5	N550,000	\$500		23-27							21-25		23-27	
ISO/IEC 20000 Practitioner & Certification	3	5	N550,000	\$500				20-24					8-12			7-11
ISO 27001 Lead Auditor & Certification	4	5	N550,000	\$500		16-20			18-22			3-7			30-4	
ISO 27001 Lead Implementer & Certification	4	5	N550,000	\$500					11-15		13-17		7-11		23-27	
ISO 22301 - Business Continuity Management Lead Auditor Certification	4	5	N550,000	\$500			2-6			15-19			21-25			7-11
ISO 22301 - Business Continuity Management Lead Implementer Certification	4	5	N550,000	\$500		23-27				1-5		10-14			30-4	
Managing Fraud in a Digitalised World	2	5	N621,500				9-13							26-30		

Courses	No of runs	Duration	Training Fee(N)	Certification fee(\$)	Jan	Feb	Mar	Apr	May	Jun	Jul	Aug	Sep	Oct	Nov	Dec
<b>IT Risk &amp; Compliance</b>		<b>Day(s)</b>														
Improving Productivity through Quality Enhancement & Cost Reduction	3	5	N429,000				9-13					10-14			9-13	
Certified in Risk & Information Systems Control (CRISC) Bootcamp	3	5	N572,000	\$1000				13-17				17-21			16-20	
Compliance Risk Management	3	3	N429,000			9-11			18-20				7-9			
Enterprise Risk Management	3	3	N434,500				30-1				13-16				23-25	
ISO 9001 Quality Management Systems Lead Auditor & Certification	3	5	N550,000	\$500				20-24			20-24		14-18			
ISO 9001 Quality Management Systems Lead Implementer & Certification	3	5	N550,000	\$500			2-6					31-4			30-4	
Quality Assurance & Food Safety Management	3	4	N550,000			24-25			11-14					26-29		
Certified Information Security Manager® (CISM)	3	5	N572,000	\$1000				13-17			27-31				16-20	
Certified Internal Auditor	3	5	N572,000	\$1000										26-30		
Integrated Audit & Assurance Professional	3	5	N572,000							15-19		3-7				7-11
Lead SCADA Security Manager	3	3	N572,000								6-8		21-23			7-11
CISA® (Certified Information Systems Auditor®)	3	5	N572,000	\$1000			9-13			22-26				12-16		

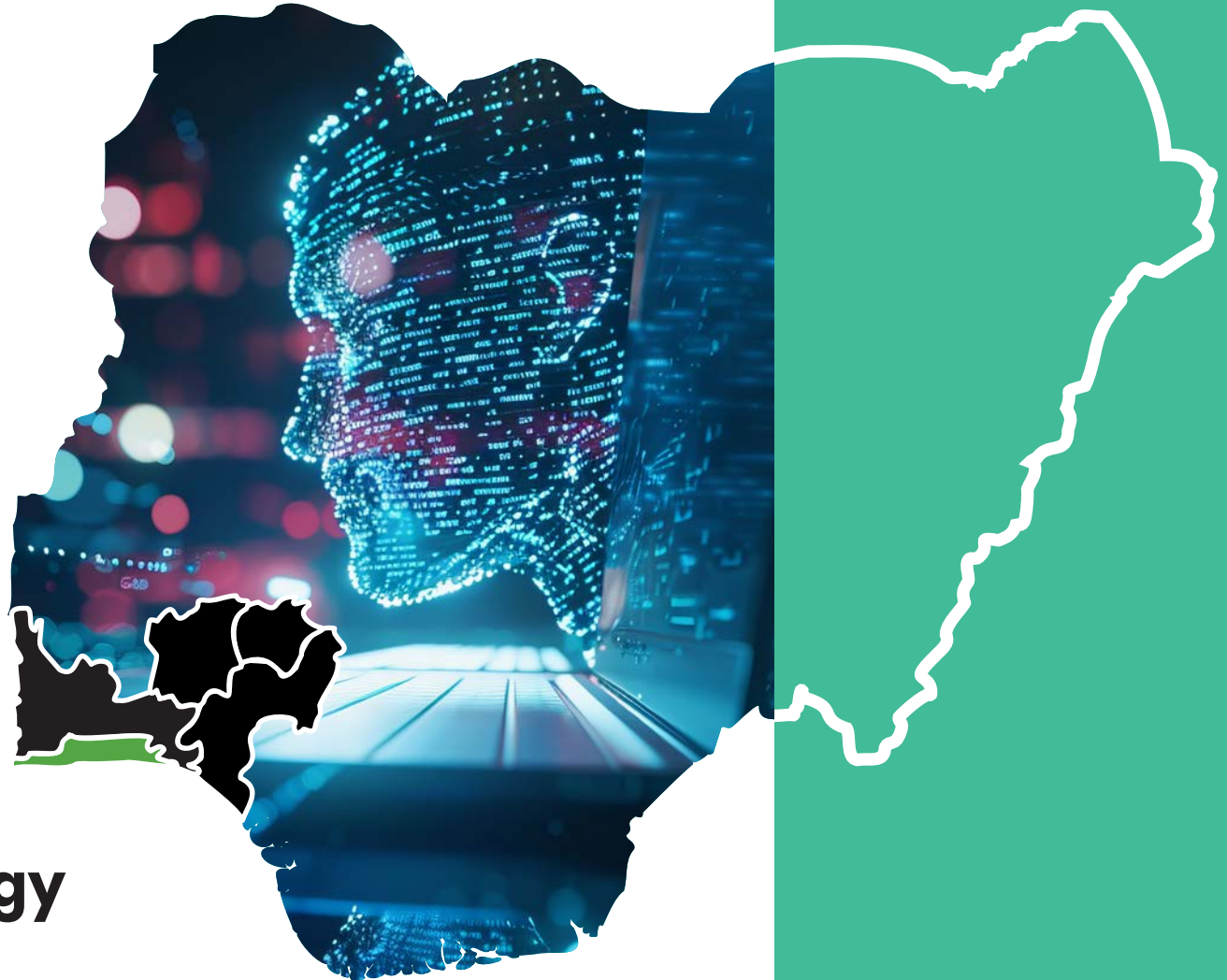


# Artificial Intelligence Programmes



Courses	No of runs	Duration	Fee(N) Exclusive of VAT	Certification fee (\$)	Jan	Feb	Mar	Apr	May	Jun	Jul	Aug	Sep	Oct	Nov	Dec
<b>Artificial Intelligence</b>		<b>Day(s)</b>														
AI for Business Optimisation & Productivity	4	2	N528,000				2-4			1-2			14-15		23-24	
AI Prompt Engineering for Professionals	4	2	N528,000					13-14			6-7		28-29			7-8
AI for Business	6	2	N528,000		26-27			27-28		8-9		24-25		5-6		7-8
Responsible AI Use for Organisational Data Protection & Safety	3	2	N528,000				9-10			22-23			14-15			
AI for Business Leaders: Strategy & Implementation	2	2	N528,000									17-18			16-17	
AI-Powered Decision Making	3	2	N528,000						4-5		27-28			26-27		
Prompt Engineering & Generative AI Tools	2	3	N528,000				9-10				6-7					
Introduction to Machine Learning for Executives	3	3	N550,000					20-21				10-11				
AI-Driven Marketing & Sales Optimisation	2	2	N528,000								13-14			19-20		
Ethical AI: Trust, Privacy and Responsible AI Development	2	2	N528,000						18-19			17-18				
AI & Cybersecurity: Protecting Digital Assets	3	2	N528,000			16-17					20-21					7-8
Applied AI for Business Leaders	2	3	N528,000					13-14					28-29			
Application Security Dynamics& AI	2	5	N495,000							29-30					30-1	





## Emerging Technology Programmes



Courses	No of runs	Duration	Fee(N) Exclusive of VAT	Certification fee (\$)	Jan	Feb	Mar	Apr	May	Jun	Jul	Aug	Sep	Oct	Nov	Dec
<b>Emerging Technologies</b>		<b>Day(s)</b>														
BeingCert Certified AI Professional	3	5	N572,000		<p><b>These trainings are strictly in-house. Kindly reach out to:</b>  <b>enquiry@phillipsconsulting.net</b>  <b>+2349060000804</b></p>											
BeingCert Certified IoT Professional	2	5	N572,000													
BeingCert Certified Blockchain Professional	3	5	N572,000													
BeingCert Machine Learning Professional	2	5	N572,000													



# International Programmes



At Phillips Consulting (p.c.), we recognise the profound impact that global learning experiences can have on individuals seeking to excel in their respective fields. We have invested significant effort in establishing strong partnerships with renowned global institutions to bring this vision to life.

#### Our partners include

**Jesus College in  
the University of  
Cambridge**

**Howard  
University,  
Washington DC**

**Terry School  
of Business,  
Atlanta, GA**

**University of  
Pretoria, Pretoria,  
South Africa**

**University  
College, London**

Through these partnerships, we offer business leaders and executives access to a wide range of world-class resources, including cutting-edge research, best practices, and expert insights, which allows them to stay at the forefront of industry trends, global developments, and the ability to navigate and shape the business landscape.

Courses	No of runs	Duration	Fee(\$)	Jun	Jul	Nov	Dec
Mastering Disruptive Digital Leadership & Strategic Corporate Governance Programme United Kingdom	2	1 week	8,775.00			23-27	
Lead Digital Transformation Strategy Executive Programme, United Kingdom	2	1 week	8,775.00	22-26		30-4	
The Advanced Organisational Resilience Programme, Qatar	1	1 week	8,775.00		20-24		7-11
IT Executive Leadership Washington Programme DC, USA	2	1 week	8,775.00			9-13	
Harnessing AI for Breakthrough Innovation & Strategic Impact. (South Africa)	1	1 Week	8,775.00			23-27	

Courses	No of runs	Duration	Fee(\$)	Jun	Jul	Sep	Oct	Nov	Dec
Creative Leadership Strategies for The Future of Work: Intellectual Forum. Jesus College, Cambridge University, United Kingdom.	2	4 Days	10,000	8-11				16-19	
Disruptive Leadership Programme, Jesus College, Cambridge University, United Kingdom	2	1 week	10,000				26-30		7-11
The Global Executive Leadership Programme; Howard University, Washington DC, USA	2	1 week	6,750		6-10				
Building Competitive Advantage through Sustainability, UCL, London	2	1 week	6,750		13-17		26-30		
Global Business Leadership, Terry School of Business, University of Georgia	2	1 week	6,750	15-19		21-25			
Executive Management Development Programme, University of Pretoria, South Africa	2	1 week	6,750		13-17		12-16		
Building the Future Ready Board – Doha	2	1 week	5,500		6-10		5-9		-
Building the Future Ready Board – London	2	1 week	6,750	8-11				9-13	









# Our Faculty



# Our esteemed faculty comprises, though is not confined to, an illustrious group of individuals

---

Our faculty is a distinguished group of accomplished professionals, industry veterans, and thought leaders passionate about developing talent and driving impactful learning experiences. Each team member brings a unique blend of extensive knowledge, practical experience, and innovative approaches, ensuring our training programmes are informative and transformative.

With backgrounds spanning various industries, including finance, management, technology, communication, and leadership, our faculty members are adept at translating complex

concepts into accessible, actionable insights. They draw from their career experiences, case studies, and current best practices, equipping participants with the tools and confidence needed to excel in their roles.

Our faculty's highly interactive approach combines expert-led discussions, hands-on activities, real-world simulations, and case analyses that engage participants and foster a deep understanding of the subject matter. They are educators and mentors who take a vested interest in each participant's personal and professional growth.

Dedicated to continuous learning and staying at the forefront of their respective fields, our faculty regularly update their content to reflect the latest trends, technologies, and methodologies. This commitment ensures that our training programs are always relevant, forward-thinking, and aligned with the evolving needs of today's business environment.

Our faculty's diverse expertise, commitment to excellence, and passion for teaching make them invaluable assets to our training initiatives. They guide participants toward achieving exceptional results and lasting success in their careers.



## LAGOS CENTRE

0906 000 0804  
enquiry@phillipsconsulting.net

## TECHNOLOGY PROGRAMMES

**Technology Training**  
0909 363 9259  
technology@phillipsconsulting.net

## ABUJA CENTRE

0806 666 9070  
enquiry@phillipsconsulting.net

## INTERNATIONAL PROGRAMMES

**Training**  
0803 402 0520  
pcltraininghub@phillipsconsulting.net

**Technology Training**  
0909 363 9259  
technology@phillipsconsulting.net

Transforming Possibilities



Phillips Consulting



Phillips Consulting Limited



@PCLAfrica



Phillips Consulting Limited



Phillips\_Consulting