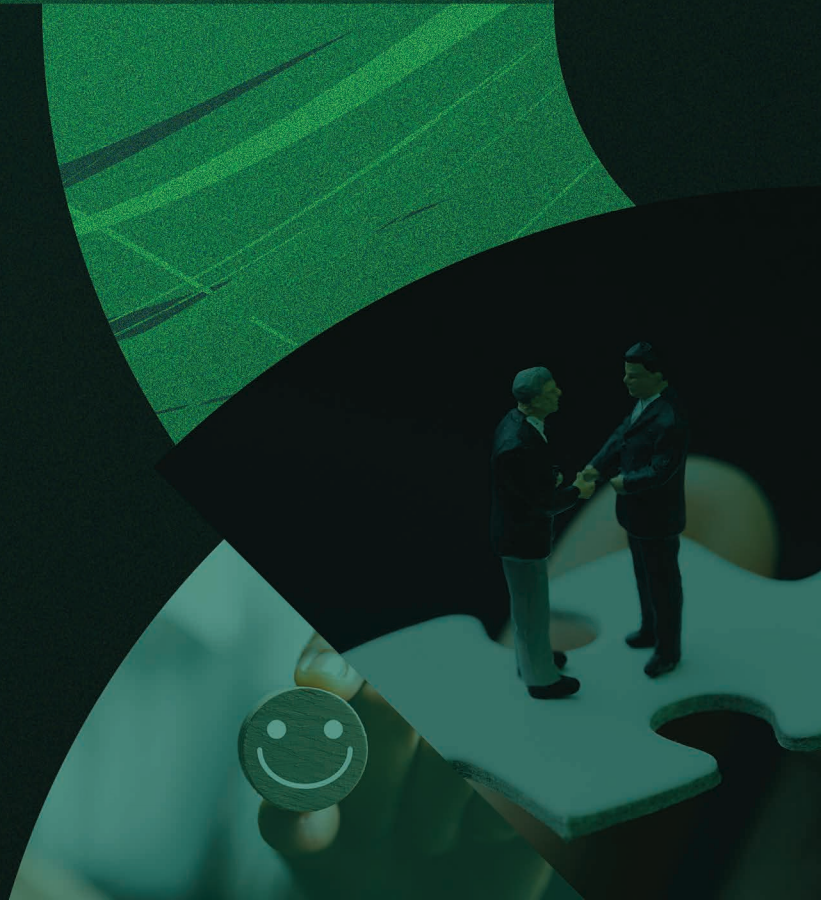


2025 pcl. **Training Calendar**

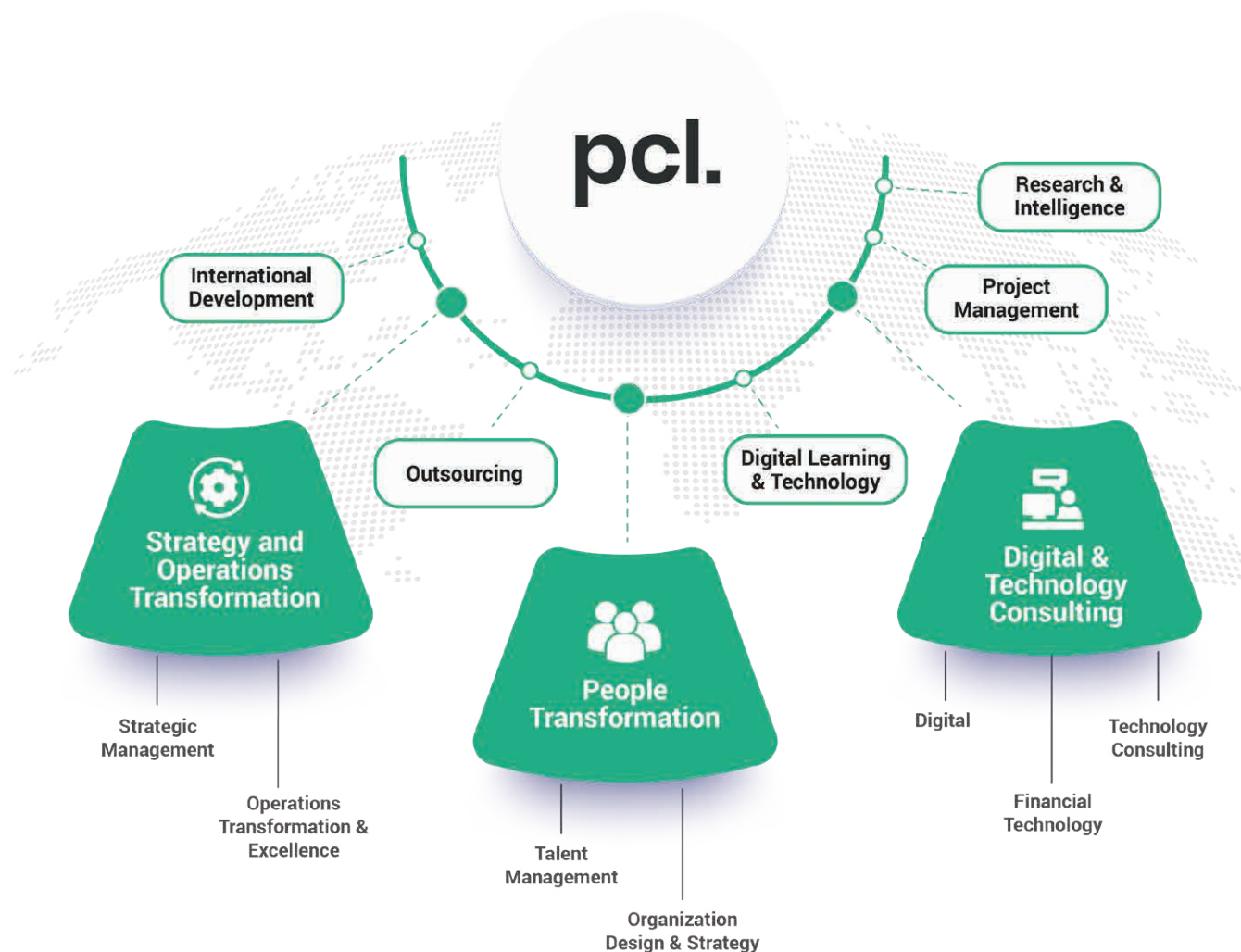


pcl.

About Us

Founded in 1992 and headquartered in Nigeria, Phillips Consulting Limited (pcl.) is a leading business and management consulting firm serving clients across Africa through offices in Lagos and Abuja.

We are a leading provider of transformation, technology, and outsourcing services. Our staff represents diverse professional disciplines, ranging from business strategy, transformation & change, digital, information technology, digital and training. Our people are practitioners and professionals who combine in-depth consulting knowledge with leading industry experts - many having worked with leading international organisations and delivered successful outcomes across the public and private sectors.



The Value We Bring



Good Understanding of the Nigerian Business Environment

Phillips Consulting Limited (pcl.) has, over the past 30 years, built up a robust understanding of acceptable business practices and procedures for executing projects in Nigeria, as well as an understanding of the reputation and strengths of key players and stakeholders in the Nigerian Market.



Strong Corporate and Public Sector Network

We work with private and public sector clients, including multinationals and leading Nigerian companies. We also work with Ministries and Government agencies at both Federal and State levels. This diverse client base has enabled us to develop valuable relationships with key decision-makers across various sectors.



Talent Pool

Phillips Consulting (pcl.) anchors its strength on the selection and development of its multidisciplinary consultants. The firm has highly experienced and dynamic consultants who are fully conversant with leading business practices. Our consultants are at the cutting edge of trends and developments in their respective fields.



Relevant Knowledge

We have a track record of successful execution in organisational restructuring, transformation, implementation/execution support, project management, change management, post-merger support, business process development, corporate governance, digital, process automation, learning, and technology deployment. All of which demonstrates our versatility.

Why pcl.

We have significant experience in driving delivery and getting results



We have an in-depth understanding of several sectors, their strategic direction, and interdependencies.



We are a respected brand in Nigeria with a passion for delivering long-term sustainable solutions in the region.



We have the local understanding and reach. We have significant experience of working with government agencies and navigating political nuances as they arise.



We have structured mechanisms that ensure service delivery to cost, time, quality, and scope.



Our talented team possesses significant consulting and research capabilities, coupled with business transformation expertise. They are proficient in skills and needs assessments, with a track record of solution design and implementation.

Why Choose Us For Your Learning Interventions?

- 
- A man in a dark suit and tie is sitting at a desk, smiling and looking at a laptop. A coffee cup is on the desk in the foreground. The background is slightly blurred, showing an office environment.
- With over three decades of expertise in learning and development and extensive experience in training facilitation, we excel at optimising your training budget for maximum cost efficiency.
 - Leveraging our profound understanding of the ever-evolving business landscape, our programmes equip individuals with the indispensable skills, knowledge, behaviour and mindset needed to tackle intricate challenges and create opportunities.
 - Our learning methodologies have evolved in tandem to meet the needs of future learners. We have adopted the flipped learning approach and learning on the Metaverse to ensure the utmost relevance and impact.
 - We are in strategic partnerships with esteemed global institutions and business schools. These collaborations guarantee our clients receive the most pertinent and impactful learning experiences founded on the latest research and industry best practices.
 - We are committed to delivering the most relevant learning experience tailored to your objectives while collaboratively identifying a programme that aligns with your needs and budget.
 - Our steadfast dedication to delivering the highest calibre of professional development has consistently resulted in outstanding outcomes for individuals and organisations.

Pcl. Learning Approach and Methodology



Our Learning Approach

Our five-Step methodology will ensure that all our courses are engaging and relevant to the job roles of our delegates:



Listen

To delegates needs by deploying a series of assessments and conducting interviews.



Articulate

A holistic set of needs and outcomes based on the profiles of delegates.



Infuse

The needs of learners into existing courses and customise cases and simulations accordingly.



Deliver

A highly participative session with opportunities to discuss real life challenges in a supportive environment.

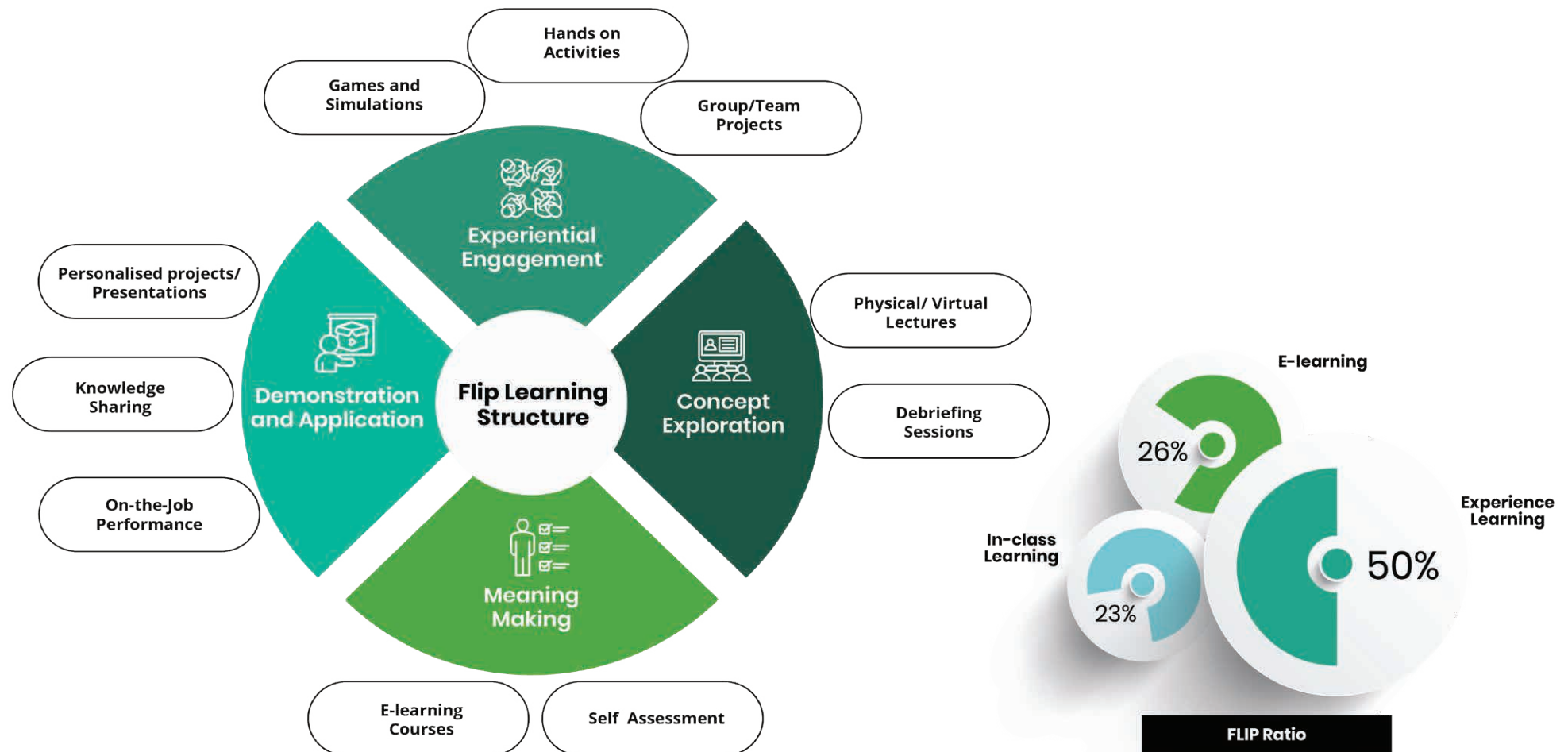


Improve and Sustain

With an exclusive community set up for lifelong learning.

- As the business world evolves, one undeniable truth remains: for any organisation to thrive, it must have a workforce of adept individuals exhibiting the appropriate behaviour and mindset.
- At pcl., we approach learning using our five-step methodology to ensure a comprehensive and immersive experience. These steps are meticulously designed to foster a deep understanding, critical thinking, and practical application of the subject matter.
- pcl. is committed to a purpose-driven learning approach that guarantees immersive and value-driven training. This approach integrates a diverse range of simulation exercises and engaging activities specifically tailored for adult learners, ensuring optimal retention of knowledge and skills.

Our flipped learning methodology has been proven to create an immersive learning experience, improve subject mastery, and boost participants' performance



Learning on the Metaverse (Coming Soon)

- pcl. is pioneering a transformative learning approach by integrating immersive training within the metaverse. This innovative method redefines our training delivery, providing participants with dynamic, hands-on learning experiences that surpass conventional methods.
- Our immersive programmes in the metaverse mark a substantial stride in our dedication to delivering state-of-the-art, impactful learning experiences.
- By harnessing this learning methodology, we aim to empower participants with the skills, knowledge, and learning practicality essential for success in the constantly evolving business world.



Learning and Leisure



Learning does not always have to be just formal! Learning can be fun and a great way to relax, socialize and network. pcl. introduces at the end of each training week, its outdoor learning with leisure activities.

Here are some of the fantastic recreational & relaxation activities, we have planned out just for you!



Team Activities

- Volleyball
- Beach Soccer
- Bowling
- Table Tennis
- Golf
- Paintballing
- Go Kart Riding



Other Fun Networking & Relaxation Activities

- Speed Boat Cruises
- Art Galleries
- Paint and Sip
- Karaoke
- Canopy Walk

We are certain you will have an exquisite learning experience

Course Highlights



Course Highlights – 1/4

Understanding Self and Human Behaviour + The Thomas Personal Profile Analysis (PPA)

18-19 February
22-23 April
5-6 June
9-10 September

N405,000

2 days

(Exclusive of VAT)

Women in Leadership: Mastering Key Leadership Competencies

19-21 March
18-20 June
17-19 September

N340,200

3 days

(Exclusive of VAT)

Leadership Agility & Adaptability Masterclass

13 March
16 May
21 August
18 November

N162,000

1 day

(Exclusive of VAT)

Leading in a Multigenerational Environment

27-28 Feb
15-16 May
13-14 August
5-6 November

N330,750

2 days

(Exclusive of VAT)

Public Speaking and Presentation Skills (VR/Simulation)

Coming soon

4 days

Leadership Communication (VR/Simulation)

Coming soon

3 days

Personal Branding Masterclass

17-18 January
17-18 June
7-8 August

N286,975

2 days

(Exclusive of VAT)

Business Essentials for Entrepreneurs

18-20 March
20-22 August

N286,000

3 days

(Exclusive of VAT)

Course Highlights – 2/4

Business Performance Reporting: Balanced Scorecard & Analytics for Business

29-30 April
17-18 June
7-8 August

N291,525

(Exclusive of VAT)

2 days

Corporate Governance and Ethics

13-14 March
10-11 July
13-14 Nov

N299,325

(Exclusive of VAT)

2 days

Intermediate Microsoft Excel

4-6 March
26-28 August

N297,130

(Exclusive of VAT)

3 days

SAP Finance and Controlling

24-28 February
7-11 July

N520,000

(Exclusive of VAT)

5 days

AI Prompt Engineering for Professionals

7-8 April
14-15 June
15-16 September
1-2 December

N450,000

(Exclusive of VAT)

2 days

Data Analytics, Business Intelligence & Visualisation with Power BI

27-30 January
5-8 May
18-21 August
13-16 October

N396,500

(Exclusive of VAT)

4 days

Cisco Certified Network Professional Enterprise (200-301)

12-16 May
6-10 October

N520,000

(Exclusive of VAT)

5 days

SalesForce Beginner Administrator

3-5 February
23-25 June
18-20 August

N520,000

(Exclusive of VAT)

3 days

Course Highlights – 3/4

Payment Card Industry Fundamentals

3-5 March
11-13 August

N331,500

(Exclusive of VAT)

3 days

Scrum Product Owner

14-18 April
2-6 June
3-7 November

N375,000

(Exclusive of VAT)

5 days

ITIL4 Foundation

27-29 January
22-24 April
2-4 June
4-6 August

N299,000

(Exclusive of VAT)

3 days

Capability Maturity Model Integration for Development (CMMI-DEV)

10-14 March
23-27 June
15-19 September

N520,000

(Exclusive of VAT)

5 days

Data Management Fundamentals

27-28 January
3-7 March
5-9 May
7-8 July

N300,000

(Exclusive of VAT)

2 days

Certified Business Analysis Professional

27-30 January
10-13 March
19-22 May
4-7 August

N474,500

(Exclusive of VAT)

4 days

Certified IoT Practitioner

10-14 February
7-11 April
8-12 September

N450,000

(Exclusive of VAT)

5 days

ISO/IEC 29100 Certified Lead Privacy Implementer

17-20 March
16-19 June
13-16 October

N500,000

(Exclusive of VAT)

4 days

Course Highlights – 4/4

Cybersecurity Fundamentals for Business

10-12 March
9-11 July
15-17 September

N331,500

(Exclusive of VAT)

3 days

CompTIA Network+

17-21 March
16-20 June

N520,000

(Exclusive of VAT)

5 days

Certified Cloud Security Analyst

19-21 May
11-13 August
10-12 November

N400,000

(Exclusive of VAT)

3 days

AWS Cloud Practitioner

10-13 March
18-21 August

N520,000

(Exclusive of VAT)

4 days

Software Testing Masterclass

12-16 May
4-8 August
17-21 November

N474,500

(Exclusive of VAT)

5 days

Fraud Risk Management

30 June-3 July
6-9 October

N442,500

(Exclusive of VAT)

4 days

TOGAF 10 Enterprise Architecture

17-21 February
12-16 May

N585,000

(Exclusive of VAT)

5 days

Certified Enterprise Blockchain Professional

17-21 February
19-23 May
10-14 November

N520,000

(Exclusive of VAT)

5 days

The image features a man with glasses and a beard, wearing a dark button-down shirt, standing in a classroom and gesturing with his hands as if presenting. He is positioned in front of a whiteboard that contains some faint, illegible text. In the foreground, the backs of two people's heads are visible, suggesting an audience. The entire image is overlaid with a semi-transparent teal color. On the left side, there are large, abstract, light-colored geometric shapes that resemble stylized letters or organic forms. The text "International Course Highlights" is centered in a bold, white, sans-serif font.

International Course Highlights

Mastering Disruptive Digital Leadership & Strategic Corporate Governance Programme

Boards, Chief Executives, and Investors amongst charting courses through uncharted territory, rapid change, and soaring expectations are now expected to have a certain understanding of technologies.

This is a result of today's business world being marked by disruption, digital transformation, and VUCA (Volatility, Uncertainty, Complexity, Ambiguity).

To succeed, embracing the right technology is paramount, as technology is the catalyst for financial growth and innovation. This programme delves into key top management concerns, including attracting and retaining top talent, developing the next generation of leaders, maintaining an engaging workforce, digital transformation, global economic shifts, product innovation, outperforming key competitors, navigating uncertainty, competitive advantage, and technology adoption.

What delegates will gain from our Mastering Disruptive Digital Leadership & Strategic Corporate Governance Programme

- The strategic significance of innovation and digital transformation
- Shifting from reactive to proactive strategies
- Identifying technology risks, vulnerabilities, and opportunities
- Balancing risk and reward in disruptive innovation
- Introducing disruptive innovation as a business process
- Succeeding with emerging technologies, driving new product innovations
- Navigating uncertainty
- Leading discussions on technology's impact on business trajectory
- Proactive risk mitigation

Schedule

2-6 June, 15-19 September 2025 (Open Session)

Please contact us for in-plant session

International Run
Date: 10-14 November
Location: United Kingdom
Training Fee: \$8,775

Local Run
Training Date:
2-6 June, 15-19 September
Location: Ibom Icon Hotel & Golf Hotel, Uyo.
Training Fee: N2,350,000

Discount Applies for Bulk Nominations



Instructor-Led



5 days

Creative Leadership Strategies for the Future of Work Programme

As global events and technological advancements have combined to successfully reshape our lives and work, leading a company into the future necessitates more than a strategic plan. The increasing complexity requires leaders to evolve in lockstep with the world of work and the war on talent, as what was once considered core leadership skills for the workplace are fast becoming obsolete.

We have partnered with the Intellectual Forum: Jesus College in the University of Cambridge to deliver the Creative Leadership Strategies for the Future of Work, a four-day executive leadership programme designed to equip business leaders and executives from various industries and sectors with the tools and frameworks needed to navigate change in all aspects of the workplace and to provide them with an immersive learning experience.

What delegates will gain from our Creative Leadership Strategies for the Future of Work Programme

- Access to international best practices and insights on navigating the workplace.
- Discover how to use technology-driven and human-centred models to reimagine the future of work.
- Gain a thorough understanding of the trends influencing the future of work.
- Learn business transformation strategies to create a personal blueprint for a future-focused workplace.
- Connect with a diverse international group and expand your professional network.
- Gain access to the world-class faculty at Jesus College in the University of Cambridge and Phillips Consulting's cutting-edge thinking and insights.
- Certificate from the Intellectual Forum – Jesus College in the University of Cambridge.

**Date: 10-13 June 2025
18-21 November 2025**
Location: United Kingdom
Training Fee: \$10,000

**Discount
Applies
for Bulk
Nominations**



Instructor-Led



4 days

The Global Executive Leadership Masterclass, Phillips Consulting & Howard University School of Business, Washington DC, USA

Today's disrupted business world demands next-level global leaders committed to stepping up, reimagining the future, and delivering excellence.

The New Global Executive Leadership Masterclass is designed to provide executives worldwide with a transformational 5-day integrated executive experience to reimagine their approach to leadership, study emerging global business models, and create a new pathway for next-level impact.

The learning interventions will dovetail to the advanced mastery of core competencies of leading, strategising and performance management tools, which will instigate viable decisions to drive initiatives forward and accelerate positive impacts in organisations.

This programme will be delivered by a world-class faculty and executive instructional team from the Howard University School of Business and Phillips Consulting, two of the world's leaders in executive development and corporate education.

What delegates will gain from "The Global Executive Leadership Masterclass"

- Access to the latest research, industry insights, and best practices curated by distinguished faculty members and industry experts.
- Certificate from the Howard University School of Business
- Gain valuable insights and perspectives that will contribute to their long-term success as leaders.
- Opportunity to network with a diverse cohort of high-level executives from various industries and regions.
- Insights into the nuances of conducting business on a global scale, allowing you to navigate the complexities of international markets confidently.
- Exclusive alumni network, providing ongoing opportunities for learning, collaboration, and professional development.

Date: 24-28 June 2025
25-29 November 2025
Location: U.S.A
Training Fee: \$6750

**Discount
Applies
for Bulk
Nominations**



Instructor-Led



One week

The Advanced Organisational Resilience Programme

Organisations at all scales and sectors face growing risk and organisational resilience challenges like never before. An ever-growing number of challenges, compounded by the speed of technological change, climate change, cyber threats and evolution, all act together to increase these challenges.

Building Organisational Resilience provides business leaders with a practical approach to assess and build organisational resiliency.

This programme provides cutting-edge strategies to fortify your organisation against disruptions and uncertainties, ensuring its continued growth and success. Our distinguished faculty of industry experts will guide you through a transformative journey, equipping you with the insights, tools, and leadership prowess to foster resilience, drive innovation, and seize opportunities in any scenario.

What delegates will gain from our Advanced Organisational Resilience Programme

- Knowledge within strategic areas of resilience and business continuity
- The ability to communicate fluently across functional boundaries
- Credibility within the resilience profession
- Effective action-based outcomes to advance organisational strategies
- The ability to network across sectors to gain transdisciplinary knowledge

Schedule

18-22 August, 24-28 November 2025 (Open Session)

Please contact us for in-plant session

International Run Date:
14-18 July, 2-6 December
Location: DC, USA
Training Fee: \$8,775

Local Run Training Date:
18-22 August, 24-28 November
Location: Lakowe Lake Resort
Training Fee: N2,350,000

**Discount
Applies
for Bulk
Nominations**



Instructor-Led



5 days

The Leading Digital Transformation Strategy Executive Programme

To thrive while facing disruption at every turn, leaders must reinvent their companies again and again. Digital transformation strategies are no longer nice-to-have, they are required.

Digital transformation isn't solely reliant on adopting new technologies. It demands new ways of thinking about how business is done, who does the work, and the customer experience associated with it.

In this programme, delegates will gain the skills to develop and implement a digital strategy within your organisation. Drawing on insights from pcl. business faculty, industry leaders, case studies, and your peers, delegates will develop a robust understanding of digital cultures, foundations, and frameworks to craft their own transformational strategy.

What delegates will gain from our Leading Digital Transformation Strategy Executive Programme

- Explore digital disruption from the perspectives of strategy, organisation, and leadership for the long term.
- Strengthen your skills as a visionary leader by learning how to spot digital opportunities, develop strategies around them, and pitch them persuasively to key stakeholders.
- Shift your mindset from traditional thinking on product- or service-based value creation and competition to a platform and ecosystem perspective, and understand the new set of strategic choices and tradeoffs they represent.
- Deepen classroom learning and begin reimagining your business through daily faculty-led integration sessions.

Schedule

15-19 September 2025 (Open Session)

Please contact us for in-plant session

International Run Date:
10-14 November
Location: DC, USA
Training Fee: \$8,775

Local Run Training Date: 15-19 September
Location: Zuma Rock Resort
Training Fee: N2,350,000

Discount Applies for Bulk Nominations



Instructor-Led



5 days

Harnessing AI for Breakthrough Innovation and Strategic Impact Programme

AI is quickly becoming a critical tool in every industry. As artificial intelligence (AI) continues to improve, it's quickly becoming a part of everyday life, affecting much of what people do and how they interact as well as how businesses operate.

Harnessing AI for Breakthrough Innovation and Strategic Impact delivers a curriculum unlike any other — created and taught by renowned faculty. In this programme delegates will acquire a variety of viewpoints and ideas from top experts in artificial intelligence, strategy, innovation, technology, ethics, and other fields.

The curriculum has been carefully crafted to integrate corporate objectives and possibilities with technology, real-world applications, and possible outcomes.

What delegates will gain from our Harnessing AI for Breakthrough Innovation and Strategic Impact Programme

- Gain a high-level understanding of key AI technologies and their applications.
- Understand how Machine Learning translates data into models that can make inferences.
- Discover best practices on how companies are currently using AI with case studies and industry guest speakers.
- Use design thinking methodology to develop potential AI applications for your organisation that are strategically aligned with your business goals.

Schedule
1-5 July 2025 (Open Session)
Please contact us for in-plant session

International Run
Date:13-17 November
Location: South Africa
Training Fee: \$8,775

Local Run Training Date: 1-5 July
Location: Ikogosi Warm Springs
Resort

Discount
Applies
for Bulk
Nominations



Instructor-Led



5 days

Global Business Leadership, Terry School of Business, University of Georgia

As the workplace evolves, it is essential that leaders can adapt to the new demands and challenges. However, being a leader can be challenging with constantly evolving demands and the need to stay up-to-date with the latest skills and knowledge.

This programme aims to help individuals transition from individual contributors to influential leaders by focusing on the processes and principles defining leadership excellence.

After completing the programme, participants will have the skills and confidence to lead and motivate others, influence stakeholders, leverage resources, and enhance business processes to achieve strategic goals.

This programme includes self-assessments, case studies, peer-to-peer learning, and action plans that can improve individual and team performance and be implemented immediately.

What delegates will gain from “Global Business Leadership”

- Access to the latest research, industry insights, and best practices curated by distinguished faculty members and industry experts
- Certificate from the Terry School of Business, University of Georgia
- Opportunity to network with a diverse cohort of high-level executives from various industries and regions.
- Learn from experienced faculty members who have expertise in global business practices.
- Acquire skills necessary for effective leadership
- Gain valuable insights and perspectives that will contribute to their long-term success as leaders.
- Exclusive alumni network, providing ongoing opportunities for learning, collaboration, and professional development.

**Date 17-21 June 2025
2-6 September 2025**
Location: U.S.A
Training Fee: \$6750

**Discount
Applies
for Bulk
Nominations**



Instructor-Led



One week

The IT Executive Leadership Programme

Our Leadership and Executive Management portfolio provides frameworks for senior executives within the Executive Management category, and programmes for all leaders in the Leadership category.

This programme is designed to help senior executives manage disruptive forces that have accelerated organisations' innovation and operation. Participants will explore the different leadership styles and when they should be used to maximise others' performance.

Throughout the course, Executives will learn about best practices for IT Leadership and Management, including how to develop an IT Strategy that aligns with business objectives, how to manage IT investments, and how to build and manage high performance teams.

What delegates will gain from our IT Executive Leadership Programme

- Develop a deep understanding of emerging technologies, including artificial intelligence, blockchain, cloud computing, and the Internet of Things (IoT).
- Gain an in-depth knowledge of best practices for managing complex IT projects and programmes, including project management methodologies, risk management, and change management.
- Enhance strategic thinking skills by exploring IT trends and opportunities to develop innovative strategies that align with the organisation's overall business goals.
- Develop an understanding of cybersecurity threats and ways to mitigate risks through secure IT practices and effective governance.

Schedule

11-15 August 2025 (Open Session)

Please contact us for in-plant session

International Run Date:
24-28 November
Location: DC, USA
Training Fee: \$8,775

Local Run Training Date:
11-15 August, 1-5 December
Location: Lakowe Lake Resort, Lagos
Training Fee: N2,350,000


**Discount
Applies
for Bulk
Nominations**



Instructor-Led



5 days



In-House Certification Courses

Certified Knowledge Manager

The highly acclaimed Knowledge Management (KM) Institute CKM programme is KM Institute's flagship course, delivered in up to 15 countries yearly, with thousands Certified since 2001.

The KM Institute in conjunction with Phillips Consulting brings this CKM programme to Nigeria. Douglas Weidner is one of the only few pioneering KM practitioners since KM's earliest days. He developed the internally acclaimed Certified Knowledge Manager certification programmes and forms part of the Phillips Consulting faculty on this course.

What delegates will gain from our Certified Knowledge Manager Course

- Perform KM using proven tips/tools anyone can use!
- Build collaborative environments, better communication, spark innovation
- Transform your organisation into a rapid-learning environment
- Develop innovative ways to motivate your staff with quick wins
- Create the KM vision for your company, including a solid strategy to get there
- Initiate with your peers successful communities of practice
- Discover usable, real-world KM principles and keys to success

Schedule

Please contact us for in-plant session

**Cost - \$2,940.00
per participant**

**Discount
Applies
for Bulk
Nominations**



Instructor-Led



**CKM
Certification
Awarded**



5 days

Certified Learning Facilitator

The CLF certification course is designed to equip participants with the knowledge and skills required to go through the examination process and earn the credence of Certified Learning Facilitator.

It will use a combination of practical sessions, audio-visual learning materials, simulations and lectures to produce exceptional talent and resources in the area of training and facilitation.

The certification exam will hold at different times during the year and all participants qualify to sit for the certification at the end of the training programme. This could be immediately at the completion of the training class or at a later communicated date.

What delegates will gain from our Certified Learning Facilitator Course

- Learn the principles of training design and facilitation – both physical and virtual.
- Learn the process of user-centred instructional design.
- Learn the art of training large diverse numbers without compromising quality especially in virtual classrooms.
- Explore methods to help to master tone, facilitate exercises, hone speaking skills, and establish a safe, engaging learning environment for participants.
- Acquire learning transfer strategies for embedding the training into the participants' daily work routines.

Please contact us for in-plant session

Cost – \$500 per participant

**Discount
Applies
for Bulk
Nominations**



Instructor-Led



**CKM
Certification
Awarded**



5 days

Our Programme Fees



Our Programme Fees (Terms and Conditions)

Open Programmes

- Our professional fee excludes VAT (at the applicable rate).
- Other terms and conditions shall apply as outlined in our Standard Terms and Conditions of Engagement.
- Programme dates will be scheduled based on availability. To secure a spot in the programme, you must notify us at least two weeks in advance.

Payment Terms

An upfront payment of 100%

Fee Structure Assumptions

- Training sessions will be conducted at our facilities.
- For attendees from outside our primary location, the client will be responsible for any travel and accommodation expenses incurred by participants.

Customised (In-Plant) Programmes

For customised or in-plant programmes, we shall require an engagement letter from your organisation accepting our terms and conditions and agreeing to the payment of our project fees according to the milestones described below:

- Our professional fee excludes VAT (at the applicable rate).
- Other terms and conditions shall apply as outlined in our Standard Terms and Conditions of Engagement.
- Programme dates will be mutually agreed upon, and a minimum notification period of two weeks is required to commence the customised programme.

Payment Terms

- An upfront payment of 80% is required before the programme begins.
- The remaining 20% balance is due upon completion of the programme.

Fee Structure Assumptions

- Training sessions can be conducted at the client's facilities or a mutually agreed location.
- For training conducted outside our primary location, the client will cover travel and accommodation expenses for our consultants.

The background is a solid teal color. On the left side, there are large, overlapping, semi-circular shapes in lighter shades of teal. In the center-right, there is a faint, stylized illustration of a laptop. Above the laptop, several icons are floating: a target, a play button on a screen, a graduation cap, and a bar chart. To the right of the laptop, there is a large, open book icon with lines representing text on its pages.

Instructor / Virtual Led Courses

Instructor / Virtual Led Courses

At pcl. (Phillips Consulting Limited), we take immense pride in our innovative and dynamic approach to learning. We have structured the calendar to offer flexibility and accessibility, with training sessions available in both instructor-led and virtual formats. This approach ensures that all participants, regardless of location or scheduling constraints, can participate and benefit from our programmes.



Instructor-Led Training (ILT) Sessions:

Our Instructor-Led Training (ILT) sessions are designed to provide interactive and hands-on learning experiences to our participants. These sessions are led by seasoned experts in their respective fields who bring extensive industry knowledge and practical insights. These sessions are in person and take place at our designated training facilities, providing participants from various locations with the opportunity to meet and engage in an immersive and engaging learning experience.

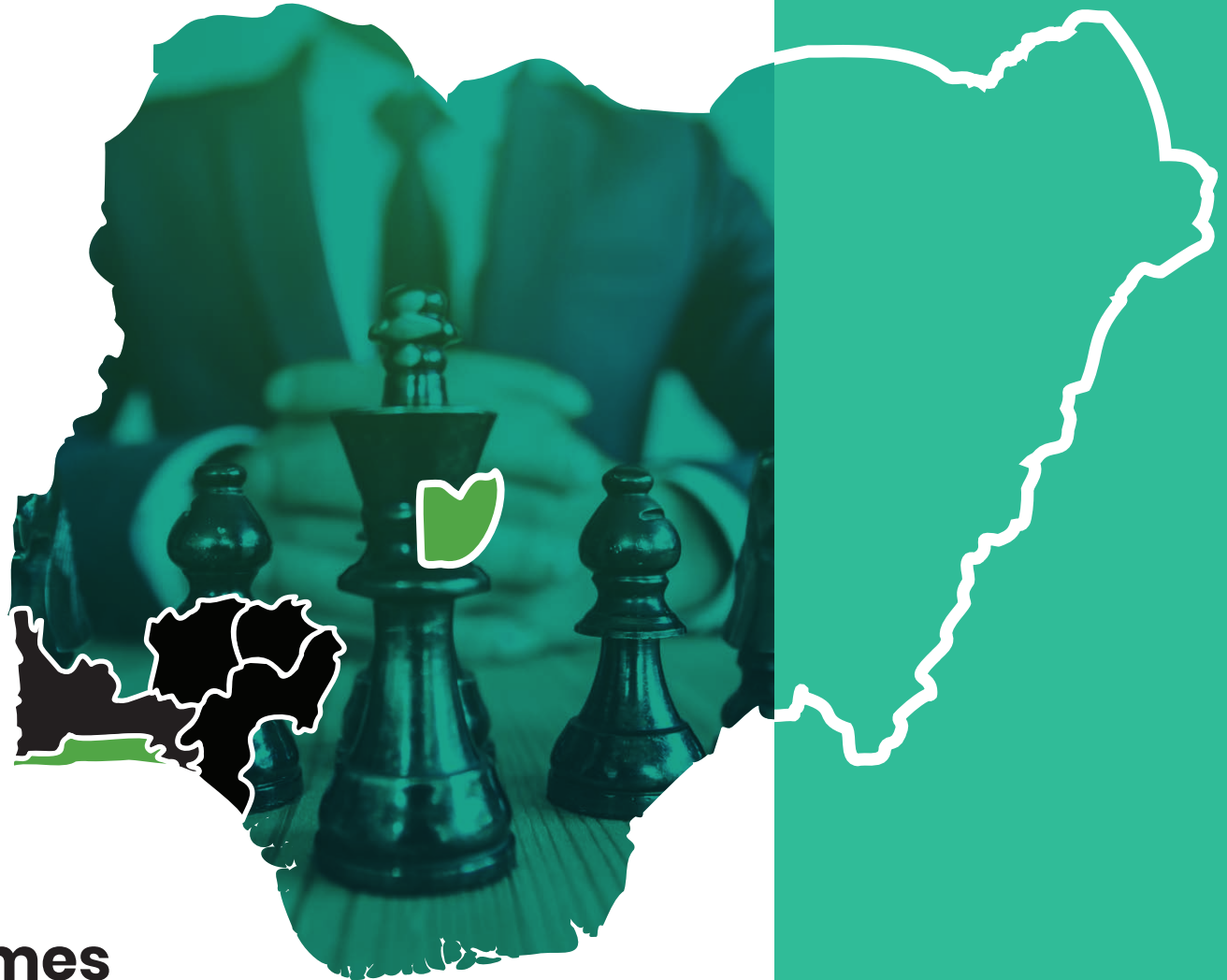


Virtual Instructor-Led Training (VILT) Sessions:

Our Virtual Instructor-Led Training (VILT) sessions provide you with the opportunity to receive professional training from the comfort of your desktop, laptop, or mobile device. We understand the importance of convenience and accessibility, and our VILT sessions ensure the same level of quality and engagement as our in-person training sessions. These sessions are delivered through a robust virtual platform that supports live video, chat, and collaborative tools.

Our training calendar has been designed to cater to the diverse needs of our participants. We have curated a range of programmes across various domains and skill levels. Each programme is carefully designed to align with organisational goals and individual career aspirations. Whether you are seeking to deepen your technical expertise, develop leadership skills or enhance your soft skills, our training calendar offers something for you.

**Should you have any questions or require further information, please do not hesitate to contact the Training Department.
(pcltraininghub@phillipsconsulting.net)**

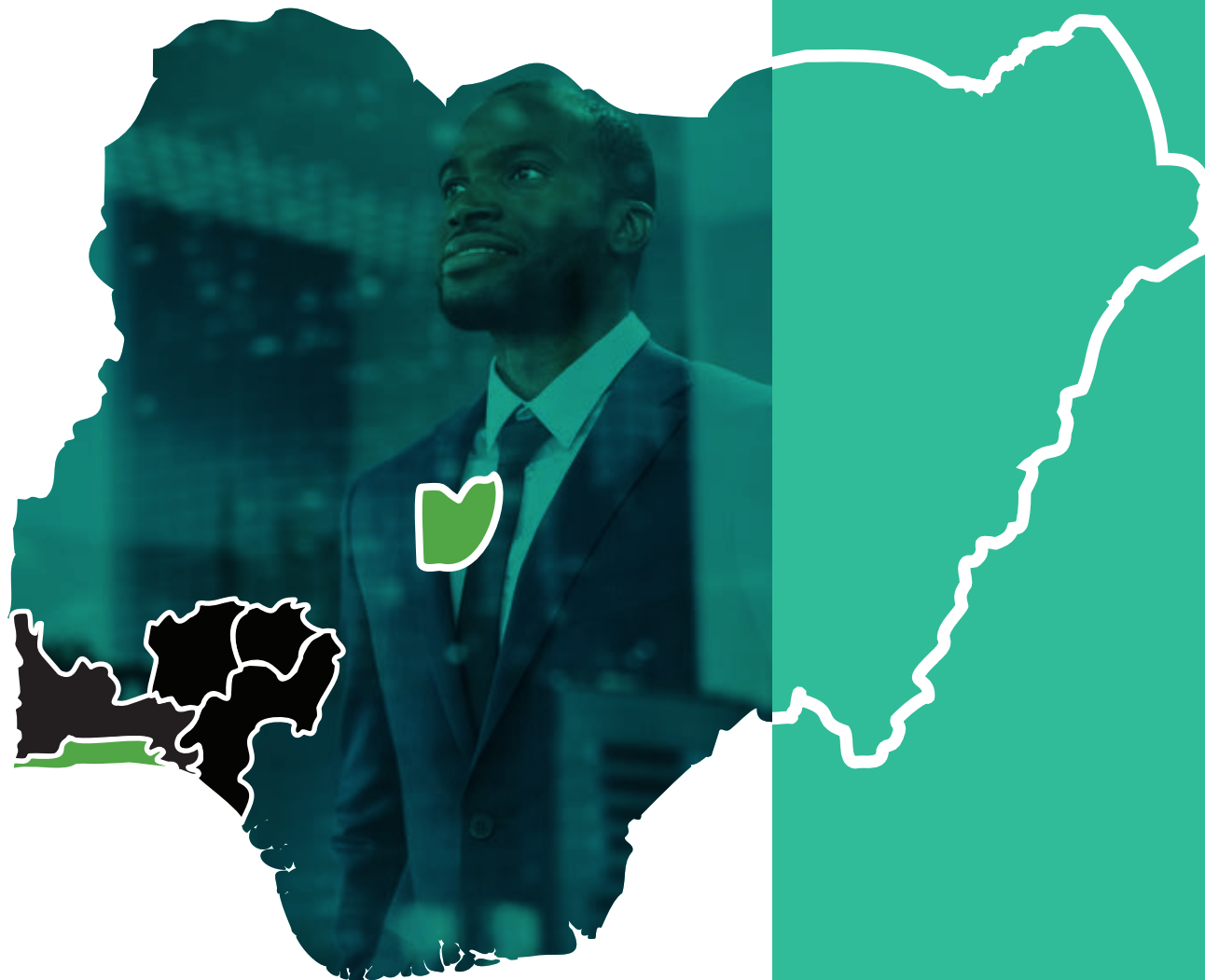


Leadership, Management and Executive Programmes

Lagos | Abuja

Courses	No of runs	Duration	Fee(N) Exclusive of VAT		Jan	Feb	Mar	Apr	May	Jun	Jul	Aug	Sep	Oct	Nov	Dec
Leading Self		Day(s)	Physical	Virtual												
Managers Starters Kit	4	3	335,394	211,174.		19-21		15-17			8-10				5-7	
Personal Workplace Effectiveness	4	3	283,500	178,500.			5-7		7-9			6-8		8-10		
Goal Setting, Planning and Decision Making	4	2	270,000	170,000	16-17			17-18			17-18					16-17
Taking on Greater Responsibilities	4	4	338,985	200,000	21-24			8-11			8-11			7-10		
Time Management Essentials	5	1	154,710	80,500	24			4		13			12		14	
Leadership and Wellness	3	3	337,500	170,000		19-21					16-18				19-21	
The Resilient Leader	4	3	309,913	170,000			18-20			18-20			17-19			10-12
Networking and Relationship Building Masterclass	4	2	297,000	160,000.		26-27			27-28			26-27			26-27	
Women in Leadership: Mastering Key Leadership Competencies	2	3	340,200	200,000			19-21			18-20			17-19			
Leading Others																
Leading and Motivating High-Performing Teams	3	3	309,913	180,000			12-14			18-20			10-12			
Emotional Intelligence Mastery	4	2	287,955	180,000		6-7			6-7			6-7			6-7	
Developing Leadership Competencies	5	5	475,875	-	13-17			7-11			7-11				10-14	
Building and Developing Productive People	3	3	321,975	180,000		19-21			6-8			6-8				
Managing Employee Performance for Results	3	3	321,975	180,000			19-21				16-18			15-17		
Leading in a Multigenerational Environment	4	2	330,750	180,000		27-28			15-16			14-15			5-6	
Leadership Agility & Adaptability Masterclass	4	1	162,000	-			13		16			21			18	
Innovation and Productivity in the Workplace	3	3	284,715	-				20-22			7-9			8-10		
The Total Leader	3	5	473,175	-			10-14			16-20			15-19			1-5
The Manager as Coach	3	3	405,675	240,425				2-4			21-23			7-9		
Understanding Self and Human Behaviour +	4	2	405,000	-		20-21		24-25		5-6		5-6				

Courses	No of runs	Duration	Fee(N) Exclusive of VAT		Jan	Feb	Mar	Apr	May	Jun	Jul	Aug	Sep	Oct	Nov	Dec
Leading the Organisation		Day(s)	Physical	Virtual												
Advanced Impactful Leadership	3	5	495,281	-			7-11				14-18				4-8	
Mastering the Art of Negotiation	3	2	309,015	180,000		16-17			25-26			27-28				
Critical Thinking and Innovative Skills	3	3	357,210	180,000		4-6		7-9					16-18			
Stakeholder Engagement and Mangement	3	2	297,000	160,000			12-13		14-15			13-14				
Finance & Operations Strategy (Driven by Advanced Business Simulation)	1	5	1,000,000	-									22-26			
Business Acumen	3	2	405,000	-				2-3		4-5				2-3		
Strategic Thinking and Decision-Making Skills	3	3	317,925	180,000				2-4			1-3			2-4		
Design Thinking and Innovation	3	2	315,900	-			6-7			5-6			9-10			
Business Intelligence and Optimisation	2	2	320,760	-				8-9				5-6				
High-Performance Leadership Programme	3	2	324,000	200,000			19-20			25-26				21-22		
Change Management	3	2	297,675	180,000		13-14			15-16				9-10			
Leading & Managing Change	3	5	405,000	200,000	17-21			7-11			7-11			13-17		
Strategic Leadership and Organisational Culture	3	5	405,000	200,000		3-7		14-18				4-8				
Executive Programmes																
Disruptive Leadership Masterclass		7 days over 2 Months	850,000	The dates for the executive programme are flexible.												
Leadership in the Age of Artificial Intelligence		7 days over 2 Months	800,000													
Agile Thinking in a Changing Business World																
Building the Future-Ready Board		7 days over 2 Months	800,000													
Data-Driven Decision-Making and Analytics for Executives		7 days over 2 Months	800,000													
Corporate Governance and Board Effectiveness		7 days over 2 Months	800,000													
Ethical Leadership and Corporate Social Responsibility		7 days over 2 Months	800,000													
Leadership in Sustainable Business Practices	1	7 days over 2 Months	800,000													



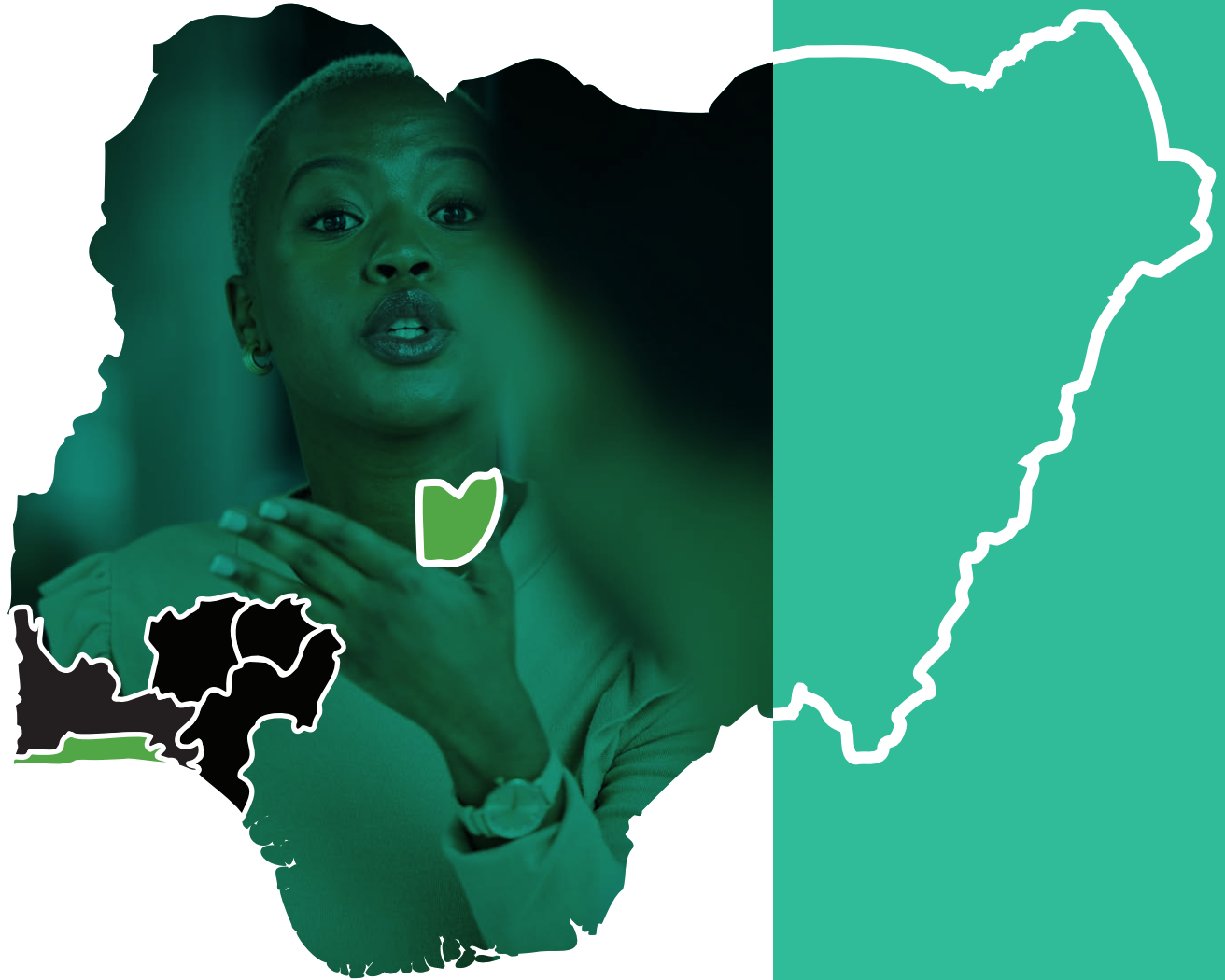
Business Courses

Lagos | Abuja

Courses	No of runs	Duration	Fee(N) Exclusive of VAT	Jan	Feb	Mar	Apr	May	Jun	Jul	Aug	Sep	Oct	Nov	Dec
Startup/SME Business		Day(s)	Physical												
Business Essentials for Entrepreneurs	2	3	286,000			12-14					20-22				
Business Acumen and Strategic Awareness	2	3	390,000				22-24			15-17					
Strategic Thinking, Analysis & Business Planning	2	3	390,000					21-23					14-16		
Building and Sustaining Long-Term Business Success in Nigeria	2	3	455,000				15-17			8-10					
Effective Business Decisions Using Data Analysis	1	3	390,000									23-25			
Operational Business Excellence: Leading with a Strategic Edge	2	3	305,500						16-18			2-4			
Practical Business Planning Workshop	2	2	273,000					15-16			7-8				
Branding for Entrepreneurs	2	3	297,135			5-7			16-18						
The Art of Networking and Relationship Mastery	2	2	286,000	23-24			9-10			15-16					
Business Planning, Pitching, and Presentation	2	3	390,000					14-16						11-13	
Legal Essentials for Startups and Entrepreneurs	2	2	325,000						10-11			10-11			
Design Thinking and Innovation for Start-ups:	2	3	390,000			12-14							15-17		
Market Research and Analysis	2	3	351,000						4-6		6-8				

Communication and Branding Programmes

Lagos | Abuja



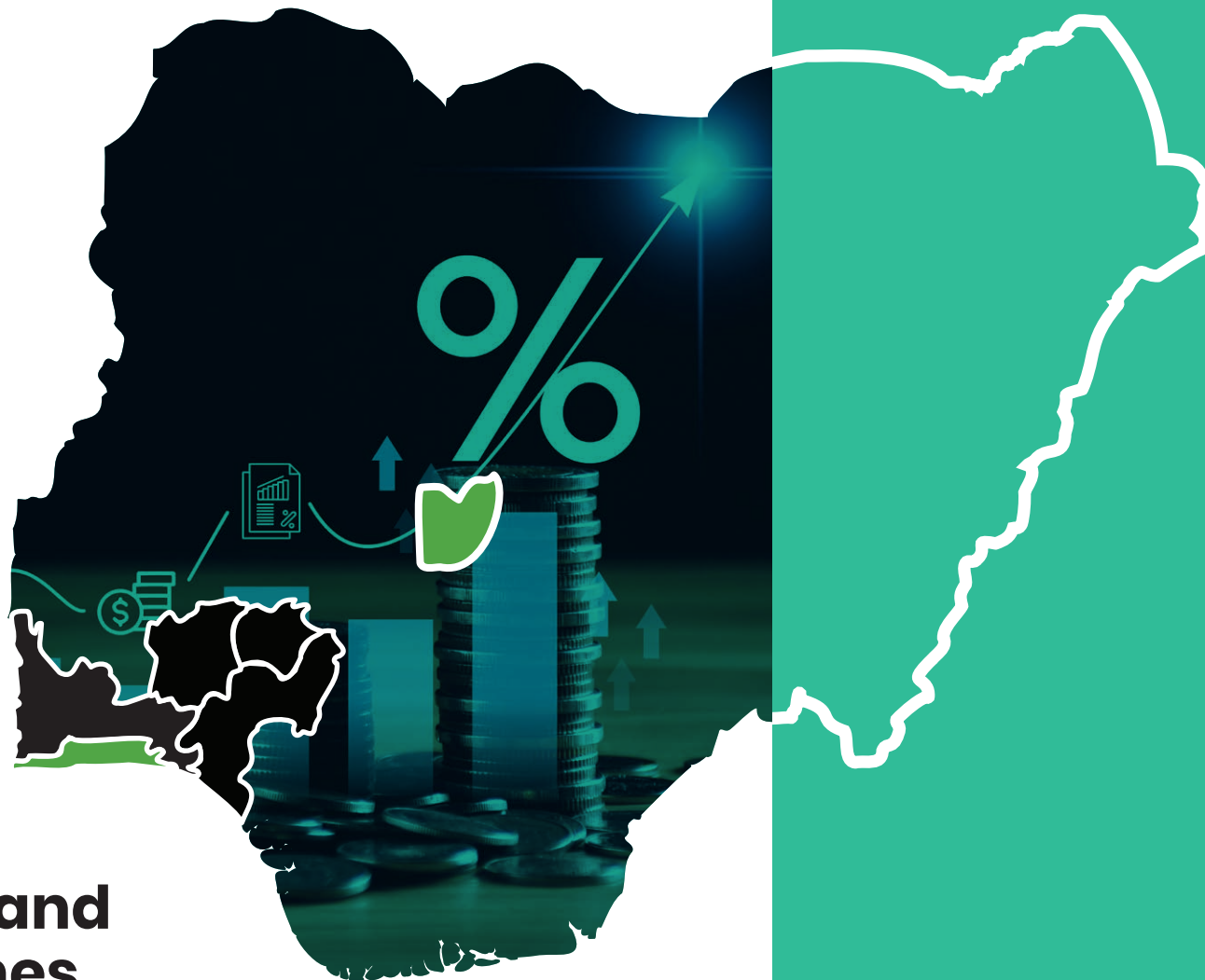
Courses	No of runs	Duration	Fee(N) Exclusive of VAT		Jan	Feb	Mar	Apr	May	Jun	Jul	Aug	Sep	Oct	Nov	Dec
Communication		Day(s)	Physical	Virtual												
Effective Business Writing	4	3	297,141.00	-	15-17		4-6			3-5			17-19			
Technical Report Writing	3	4	328,900.00	-			25-28		27-30				23-26			
Ethical Communication	3	1	148,980.00	80,000			11			13			10			
Communicating with Assertiveness	3	1	148,980.00	80,000			18				15				19	
High-Impact Business Communication	3	4	312,832.00	180,000				15-18		18-21		6-9				
Public Speaking and Presentation Skills	4	3	297,134.50	-			12-14			19-21			18-20			10-12
The Act of Active Listening	4	1	143,000.00	-		20			20			20			20	
Communication Strategies for Senior Leadership	4	3	318,500.00	180,000		12-14			14-16		9-11			8-10		
Communicating with Influence and Impact	3	2	273,000.00	178,500			7-8			13-14			16-17			
Branding																
Branding A-Z	3	3	297,134.50	170,000			4-6		6-8				2-4			
Strategic Brand Management	3	2	262,745.60	171,795			28-29		27-28				16-17			
Corporate Identity & Brand Management	3	4	364,000.00	200,000			12-15			17-20				14-17		
Personal Branding	2	2	286,975.00	160,000	16-17			9-10				7-8				
Consumer Psychology and Branding	2	2	273,975.00	160,000			11-12			20-21		22-23				



Sales, Marketing and Customer Experience Programmes

Lagos | Abuja

Courses	No of runs	Duration	Fee(N) Exclusive of VAT		Jan	Feb	Mar	Apr	May	Jun	Jul	Aug	Sep	Oct	Nov	Dec
Sales & Marketing		Day(s)	Physical	Virtual												
Digital Marketing	3	3	297,128.00	180,000			12-14				3-5		23-25			
Marketing and Business Development Skills	3	3	297,128.00	180,000				24-26		24-26			23-25			
Planning & Executing Marketing and Sales Strategy	4	3	297,128.00	180,000		27-29			7-9			12-14			5-7	
Consultative Selling Masterclass	2	3	299,747.50	180,000				3-5				14-16				
Strategic Key Account Management	3	3	312,000.00	180,000				2-4			9-11					3-5
Developing & Implementing Strategic Marketing Plans	3	5	455,000.00	-			4-8			17-21				14-18		
The Psychology of Selling	2	3	299,747.50	178,000					6-8				4-6			
The Sales Bootcamp	2	5	455,000.00	-				22-26				26-30				
Sales for Non-Sales Professionals	3	3	299,000.00	170,,500			20-22			26-28			25-27			
Mastering Influence and Negotiation	2	3	299,747.50	180,000			20-22				29-31					
Sales Etiquette	2	3	260,000.00	160,000					7-8			12-13				
Customer Experience Management																
Customer Experience Management	3	2	265,746.00	150,000				8-9		13-14				17-18		
Customer Relationship Management	3	3	297,128.00	-			4-6			3-5			2-4			
Delivering Service Excellence	3	2	265,746.00	150,000				18-19			18-19		5-6			
Contact Center Agent Training	2	2	225,368.00	140,000					16-17			14-15				



Finance, Operation and Strategy Programmes

Lagos | Abuja

Courses	No of runs	Duration	Fee(N) Exclusive of VAT	Jan	Feb	Mar	Apr	May	Jun	Jul	Aug	Sep	Oct	Nov	Dec
Finance		Day(s)	Physical												
Basic Financial Modeling	3	3	297,128.00					20-22		15-17		23-25			
Advanced Financial Modeling	3	3	312,832.00			18-20			3-5					13-15	
Financial Management & Credit Analysis	3	2	299,000.00				8-9			1-2			7-8		
Finance and Accounting for Non-Finance Professionals	3	3	352,072.50			11-13			17-19			9-11			
Revenue Forecasting & Financial Analysis	2	5	450,750.00				7-11					14-18			
International Public Sector Accounting Standards (IPSAS)	2	5	650,750.00					13-17			26-30				
Cost optimisation, Management & Reporting	2	3	291,525.00			11-13		6-8					7-9		
Business Performance Reporting: Balanced Scorecard & Analytics for Business	2	2	291,525.00				29-30		20-21		7-8				
Advanced Budgeting and Cost Management	2	3	344,500.00							1-3				6-8	
Operations Management															
Inventory & Warehouse Management	3	4	312,650.00			18-21			25-28		5-8				
Vendor and Contract Management	3	4	312,650.00					7-10				16-19		18-21	
Strategic Supply Chain & Procurement Management	3	4	312,650.00				15-18		4-7					25-28	
Facilities Management	3	3	273,000.00				22-24			10-12			21-23		
Purchasing Management Specialist	2	4	312,650.00					13-16				17-20			
Business Process Mapping and Reengineering (BPR)	2	3	359,547.50			18-20					26-28				
Corporate Strategy															
ESG Corporate Governance	2	2	297,128.00					23-24				16-17			
Developing, Executing & Sustaining Strategy for Competitive Advantage	2	3	320,580.00			12-14						23-25			
Corporate Governance and Ethics	3	2	299,325.00			13-14				10-11				13-14	

Talent & Knowledge Management and Workplace Productivity Tools Programmes

Lagos | Abuja



Courses	No of runs	Duration	Fee(N) Exclusive of VAT		Jan	Feb	Mar	Apr	May	Jun	Jul	Aug	Sep	Oct	Nov	Dec
Human Capital Management		Day(s)	Physical	Virtual												
Designing and Implementing Compensation and Benefits	2	2	260,000.00	-				24-25						23-24		
HR Metrics & Analytics	4	1	156,325.00	-			11			11			11			2
Designing a Performance Management Framework	3	3	297,130.60	-				9-11				4-6			12-14	
Competency Based Interview Skills	2	3	280,696.00	-					14-16					15-17		
Human Resource Business Partner	3	2	250,042.00	163,500			27-28				10-11			22-23		
The Master Class in HR Strategy	2	4	390,000.00	--			11-14				15-18					
Integrated Talent Management	3	3	258,375.00	168,950					5—7				15-17			10-12
Designing & Implementing Competency Frameworks & Assessment Tools	2	4	390,000.00	-			18-21					5-8				
Introduction to Human Resource	3	2	297,130.60	194,280				10-11			1-2			16-17		
Managing the HR Function	3	4	312,832.00	204,550			11-14				1-4				18-21	
Agile HR Transformation - A to Z of Best Practices	2	4	390,000.00	-						17-20					18-21	
Strategic Performance Management Using an Executive Dashboard	2	5	455,000.00	-				7-11			21-25			13-17		
Versatile Performance Management in a VUCA World	2	5	455,000.00	-					12-16				22-26			
Managing the Learning and Development Function	3	2	286,325.00	187,200			5-6			5-6			4-5			
Talent Acquisition: The Total Recruitment Process	2	2	318,500.00	208,250		27-28			22-23				25-26			
Employee Experience Design	2	2	273,000.00	178,500				10-11			17-18					
Knowledge Management																
Certified Knowledge Manager	1	5	\$2,940	-	On Request											
Learning & Instructional Design																
e-Learning Instruction Design & e-Content Development	3	4	312,832.00	-		4-7			6-9						11-14	
Instructor-Led Course Development with Facilitation Techniques	3	5	398,417.50	-			3-7			16-20				20-24		
Learning and Development Strategies for a High Performing Organisation	3	4	520,000.00			18-21			13-16			26-29				
Workplace Productivity Tools																
Data Visualisation - Storytelling with Infographics	2	4	286,650.00	-		4-7				3-6			16-19			
Basic Microsoft Excel	2	2	250,042.00	-			26-27					21-22				
Intermediate Microsoft Excel	2	3	297,130.00	-			4-6					25-27				
Advanced Microsoft Excel with Dashboard	2	4	312,832.00	-				8-11				27-30				
Office Administration and Management	3	2	265,746.00	173,750				29-30		3-4			8-9			

A woman with long dark hair is sitting at a desk, smiling as she looks at a laptop. The scene is dimly lit, with light coming from a window in the background where a potted plant is visible. The entire image is overlaid with a semi-transparent teal color. On the left side, there are several overlapping circular and semi-circular shapes in different shades of teal and white. The text 'Microlearning Courses' is written in a bold, white, sans-serif font, centered horizontally and partially overlaid by the teal shapes.

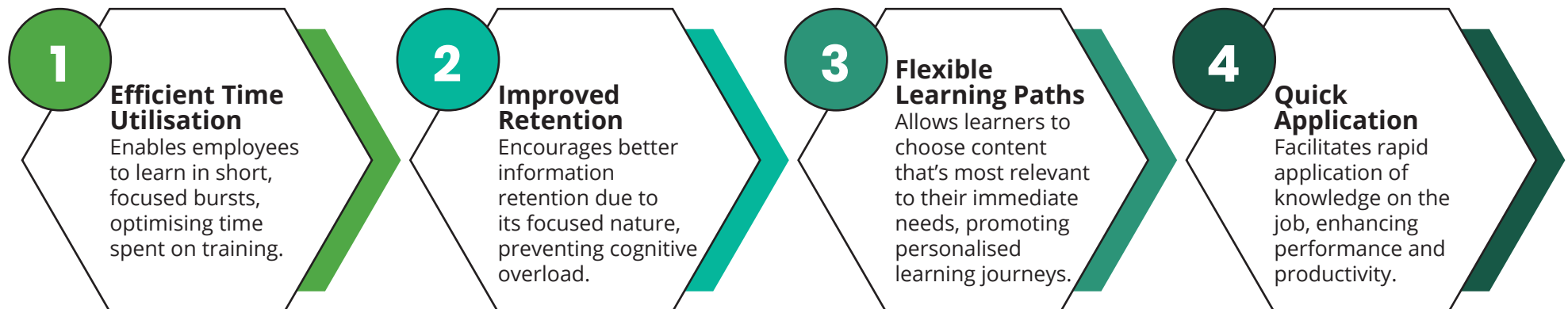
Microlearning Courses

Pcl. Microlearning Courses

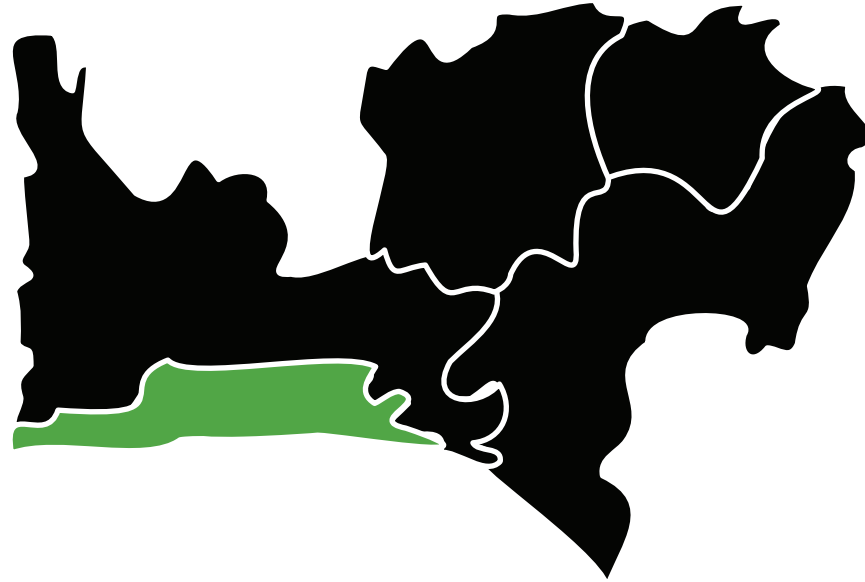
Pcl. Microlearning courses has emerged as a dynamic and effective approach to learning in today's fast-paced world. This innovative method breaks down courses into bite-sized learning nuggets and are designed to address a single learning objective, ensuring maximum retention and application.

By enrolling your employees to take our microlearning courses, you empower them to learn at their own pace, enhancing their performance and contributing to the overall success of your organisation.

Benefits of the Pcl. Microlearning



Courses	No of runs	Duration	Fee(N) Exclusive of VAT	Jan	Feb	Mar	Apr	May	Jun	Jul	Aug	Sep	Oct	Nov	Dec
		Hour(s)	Virtual												
Time Management	12	2 hours	20,000	<p>The microlearning programme operates throughout the year, providing learners with a consistent and accessible pathway for continuous learning and skill development.</p>											
Digital Marketing Basics	12	2 hours	20,000												
Self-Care for Productivity	12	2 hours	15,000												
Emotional Intelligence-Self Awareness	12	2 hours	20,000												
Effective Email Communication	12	2 hours	20,000												
Communicating with Assertiveness	12	2 hours	20,000												
Negotiating for Success	12	2 hours	20,000												
The Act of Listening and Giving Feedback	12	2 hours	20,000												
Developing Personal Accountability	12	2 hours	20,000												
Public Speaking Basics	12	2 hours	20,000												
Building Self-Confidence and Assertiveness	12	2 hours	20,000												
Prospecting and Lead Generation	12	2 hours	20,000												
The Act of Closing Sales Deal	12	2 hours	20,000												
Managing Sales Pipeline	12	2 hours	20,000												
Effective Presentation Techniques	12	2 hours	20,000												
Handling Difficult Customers	12	2 hours	20,000												
Building a Growth Mindset	12	2 hours	20,000												



Technology Courses

Lagos Centre (Instructor-Led Classes)

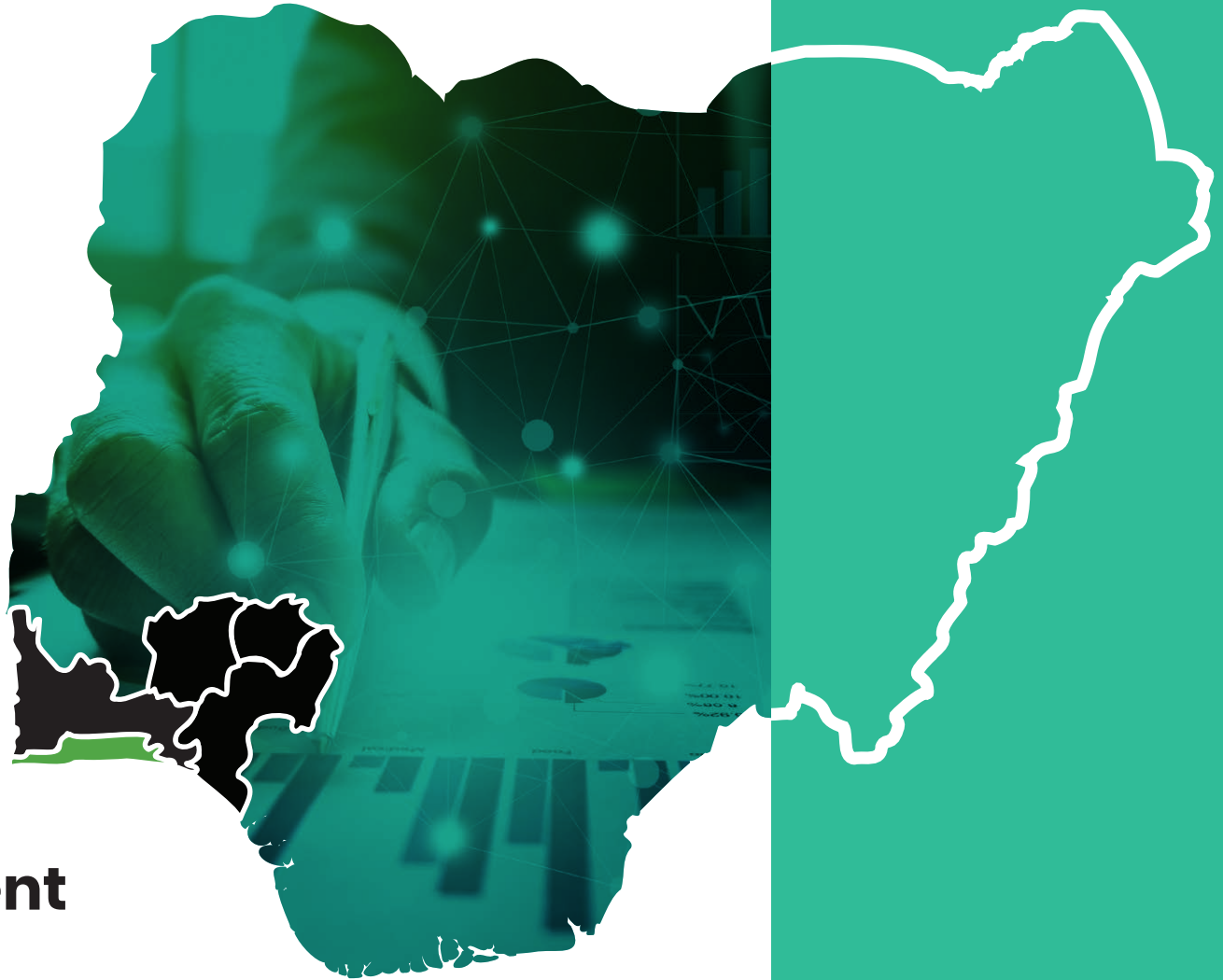


Project & Programme Management



Courses	No of runs	Duration	Fee(N) Exclusive of VAT	Certification fee (\$)	Jan	Feb	Mar	Apr	May	Jun	Jul	Aug	Sep	Oct	Nov	Dec
Project Management		Day(s)														
Effective Project Management with Microsoft Project Simulation	5	4	N344,500			17-20		7-10		16-19		4-7		6-9		
Project Management Professional (PMP) Fast Track	6	5	N409,500	\$575	27-31		3-7		5-9		7-11		8-12			1-5
PRINCE2 Foundation and Practitioner (with Exams)	3	5	N474,500	\$950				7-11			14-18			13-17		
Certified Associate in Project Management	3	5	N455,000	\$950			10-14			16-20			8-12			
PRINCE2 Agile Foundation & Practitioner	4	5	N455,000	\$950					12-16		7-11		22-26			1-5
Agile Project Management Foundation & Practitioner -APMG	3	5	N455,000	\$950			17-21			30-4					10-14	
Project Analysis Tools & Techniques for Managing Risk & Uncertainty	3	3	N331,500	\$950				7-9					15-17		17-19	
PMI- Agile Certified Practitioner	3	3	N455,000							16-18				20-22		1-3
Scrum Master Certified (SMC)	3	2	N318,500	\$300			24-25		19-20		21-22			13-14		
Establishing & Managing the Project Management Office	2	3	N344,500			10-12						4-6				
Certified Telecommunications Project Management (CTPM)	2	5	N450,000				10-14						8-12			
Auditing Projects, Project Management and Project Risk	2	3	N344,500							30-2					3-5	
Improving Productivity Through Quality Enhancement & Cost Reduction	2	4	N390,000					7-10			28-31					
Advanced Oil & Gas Project Economics, Risk & Decision Analysis	3	5	N461,500		27-31				19-23					27-31		
Lean Six Sigma White Belt	3	3	N455,000				24-26					11-13			3-5	
Lean Six Sigma Yellow Belt	3	5	N585,000			24-28					21-25			27-31		
Lean Six Sigma Green Belt	3	5	N585,000					7-11		16-20			15-19			
Lean Six Sigma Black Belt	3	5	N650,000				3-7				14-18				24-28	

Courses	No of runs	Duration	Fee(N) Exclusive of VAT	Certification fee (\$)	Jan	Feb	Mar	Apr	May	Jun	Jul	Aug	Sep	Oct	Nov	Dec
Programme Management		Day(s)														
Programme Management Professional	3	5	N520,000	\$800				7-11				11-15		20-24		
Portfolio and Investment Training																
Portfolio and Investment Management Fundamentals	3	5	N396,500						12-16			25-29			17-21	
Mastering Portfolio Programmes & Projects	3	3	N455,500		20-22				19-21					6-8		
Strategic Portfolio and Resource Management	3	5	500,000			3-7					14-18				10-14	

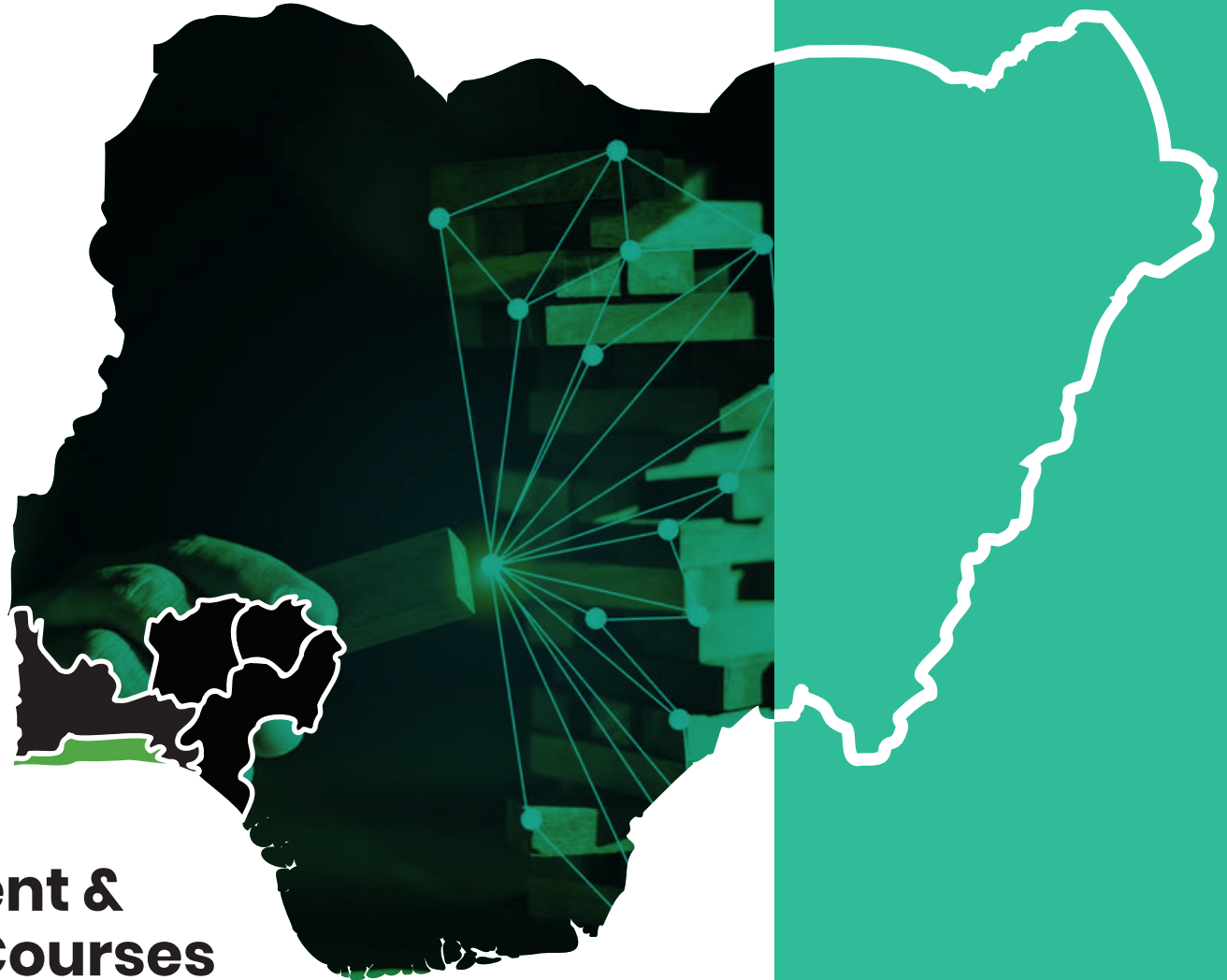


Business Analysis & Product Management Courses



Courses	No of runs	Duration	Fee(N) Exclusive of VAT	Certification fee (\$)	Jan	Feb	Mar	Apr	May	Jun	Jul	Aug	Sep	Oct	Nov	Dec
Business Analysis		Day(s)														
Certified Business Analysis Professional (CBAP) Training	5	4	N478,400	\$650	27-30		10-13		19-22			4-7		13-16		
Entry Certificate in Business Analysis™ (ECBA™)	3	2	N417,200	\$500			10-11		19-20			4-5		13-14		
Certification of Capability in Business Analysis™ (CCBA®)	3	3	N422,500	\$550			10-12		19-21			4-6		13-15		
Business Analysis Fundamentals	5	3	N344,500		27-29		10-12		19-21			4-6		13-15		
The Business Intelligence Analyst Course	3	4	N338,000				24-27					18-21		6-9		
Advanced Business Analytics	3	5	N461,500			10-14				16-20			8-12			
Agile Business Analysis	3	3	N351,000		27-29				12-14					13-15		
Certified Business Process Model Notation	2	4	N478,400							2-5		25-28				
Certified Business Continuity Professional	3	4	N478,400					7-10			14-17				3-6	
Certified Business Analyst	2	4	N478,400		27-30							4-7				

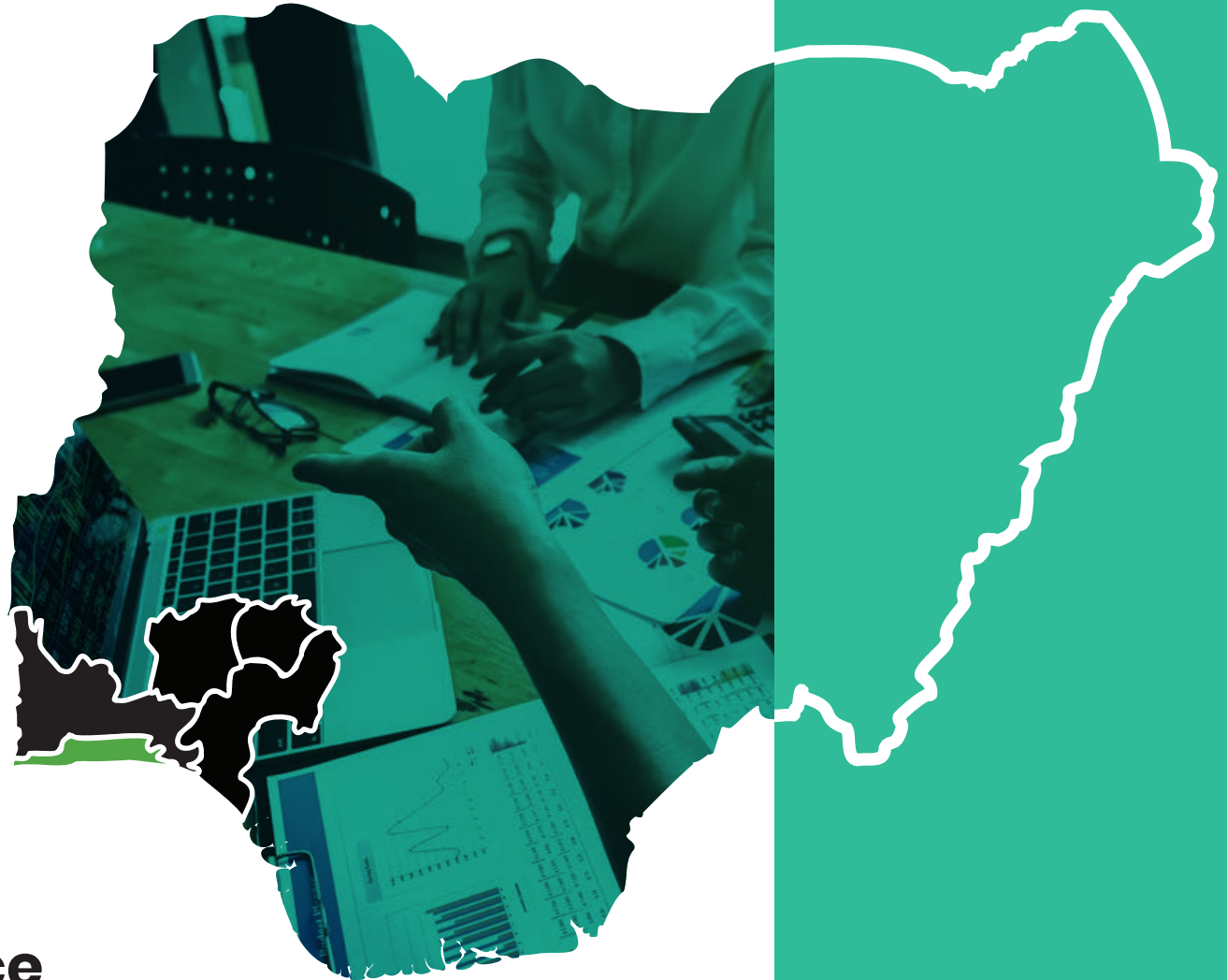
Courses	No of runs	Duration	Fee(N) Exclusive of VAT	Certification fee (\$)	Jan	Feb	Mar	Apr	May	Jun	Jul	Aug	Sep	Oct	Nov	Dec
Product Management		Day(s)														
Product Management Fundamentals (Transitioning into Product Management)	3	3	N344,500				17-19			16-18			22-24			
The Complete Product Management Course	3	5	N487,500	655			17-21			16-20			22-26			
Scrum Product Owner	3	5	N487,500	500						2-6					3-7	
Product Ideation, Design & Management	3	4	N357,500		27-30						14-17			13-16		
Digital Product Management	4	5	N390,000			10-14			19-23				8-12		17-21	
Product Marketing	2	5	N357,500				17-21					11-15				
Product Strategy	2	5	N390,000							16-20				6-10		
Product Design	4	4	N370,500		27-30						14-17			13-16		
Advanced Product Management, Leadership and Communication	4	4	N494,000				10-13				21-24		8-11		10-13	
Agile Product Management	3	5	N390,000		27-31			7-11				18-22				1-5



Change Management & Risk Management Courses



Courses	No of runs	Duration	Fee(N) Exclusive of VAT	Certification fee (\$)	Jan	Feb	Mar	Apr	May	Jun	Jul	Aug	Sep	Oct	Nov	Dec
Change Management		Day(s)														
Introduction to Change Management	3	3	N350,000				17-19			16-18			8-10			
APMG-International Change Management™ Foundation & Practitioner	3	5	N455,000	\$630			17-21			16-20			8-12			
Risk Management																
PMI-Risk Management Professional	3	5	N455,000	\$555			10-14				25-29				17-21	
Project Risk Management	2	3	N305,500							23-25				13-15		
ISO 31000 Risk Management	3	4	N500,000	\$500				7-11		23-26				13-16		
Risk Management for Asset Managers	3	5	N520,000			24-28			19-23						10-14	

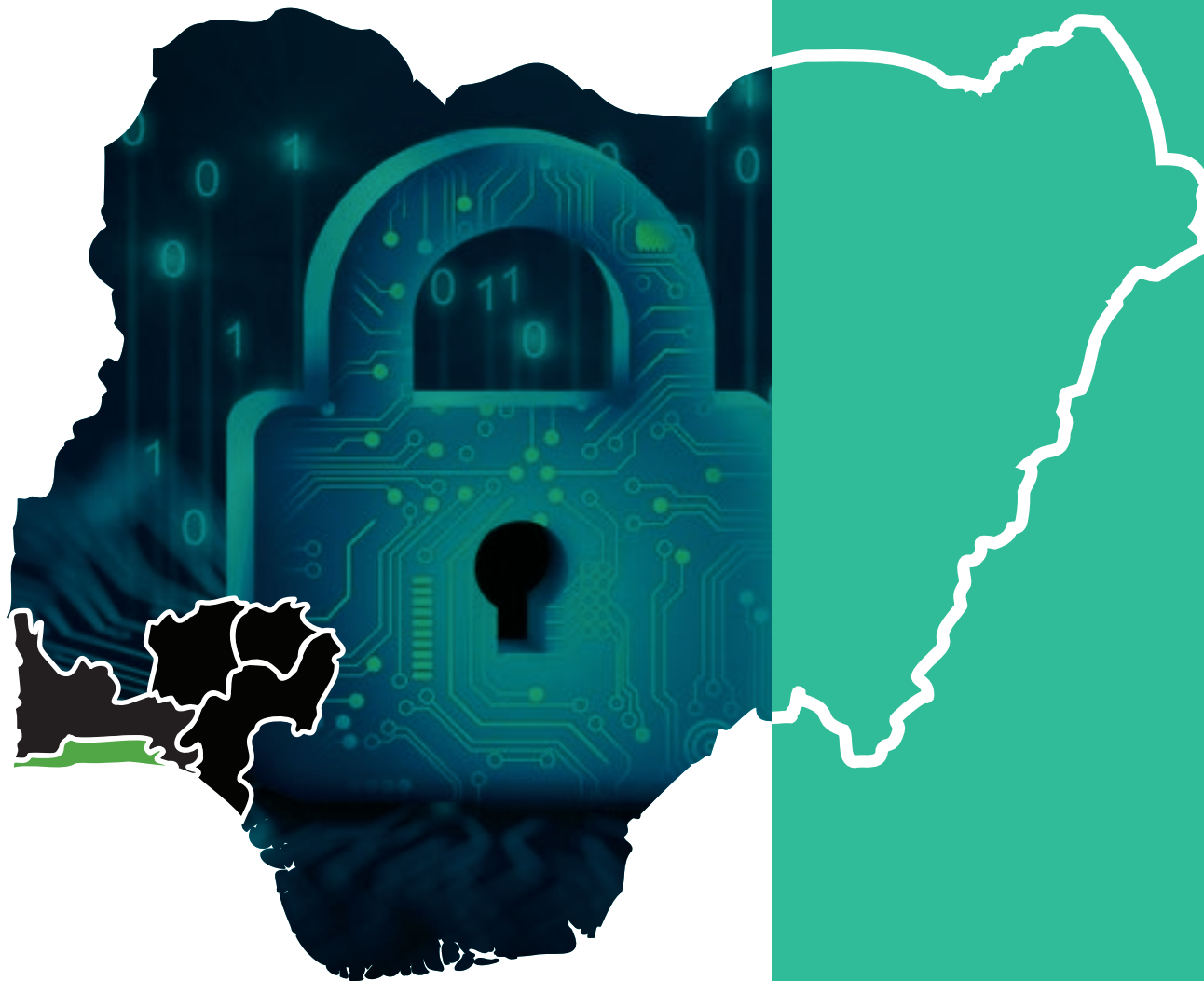


Data Analytics and Business Intelligence



Courses	No of runs	Duration	Fee(N) Exclusive of VAT	Certification fee (\$)	Jan	Feb	Mar	Apr	May	Jun	Jul	Aug	Sep	Oct	Nov	Dec
Data Analytics and Business Intelligence		Day(s)														
Data Analytics, Business Intelligence & Visualisation with Power BI	5	4	N396,500		27-30				5-8			18-21		13-16	17-20	
Data & Business Analytics Fundamentals Using Excel	3	4	N357,500					22-25			28-31					1-4
Data & Business Analytics for Managers	3	3	N461,500			17-19					7-9			6-8		
Big Data Analytics with Microsoft R	3	5	N474,500				3-7			16-20					10-14	
Applied Data Science with Python Specialisation	3	5	N455,000				24-28			23-27			8-12			
Data Warehousing for Business Intelligence	3	5	N390,000						5-9			11-15			3-7	
SQL Programming	3	4	N390,000					7-10		2-5			15-18			
Introduction to Python Programming	3	4	N370,500			17-20			5-8			4-7				
Power BI for Excel Users	2	3	N383,500				10-12				14-16					
Power BI Advanced Analytics with R	2	3	N390,000					22-24		16-18						
Intermediate Power BI for Data Analysis	2	3	N390,000						19-21			25-27		1-3		
Power BI Advanced Analytics with Python	2	3	N455,000						19-21						24-26	
Certified Big Data Professional	2	5	N520,000			24-28							22-26			

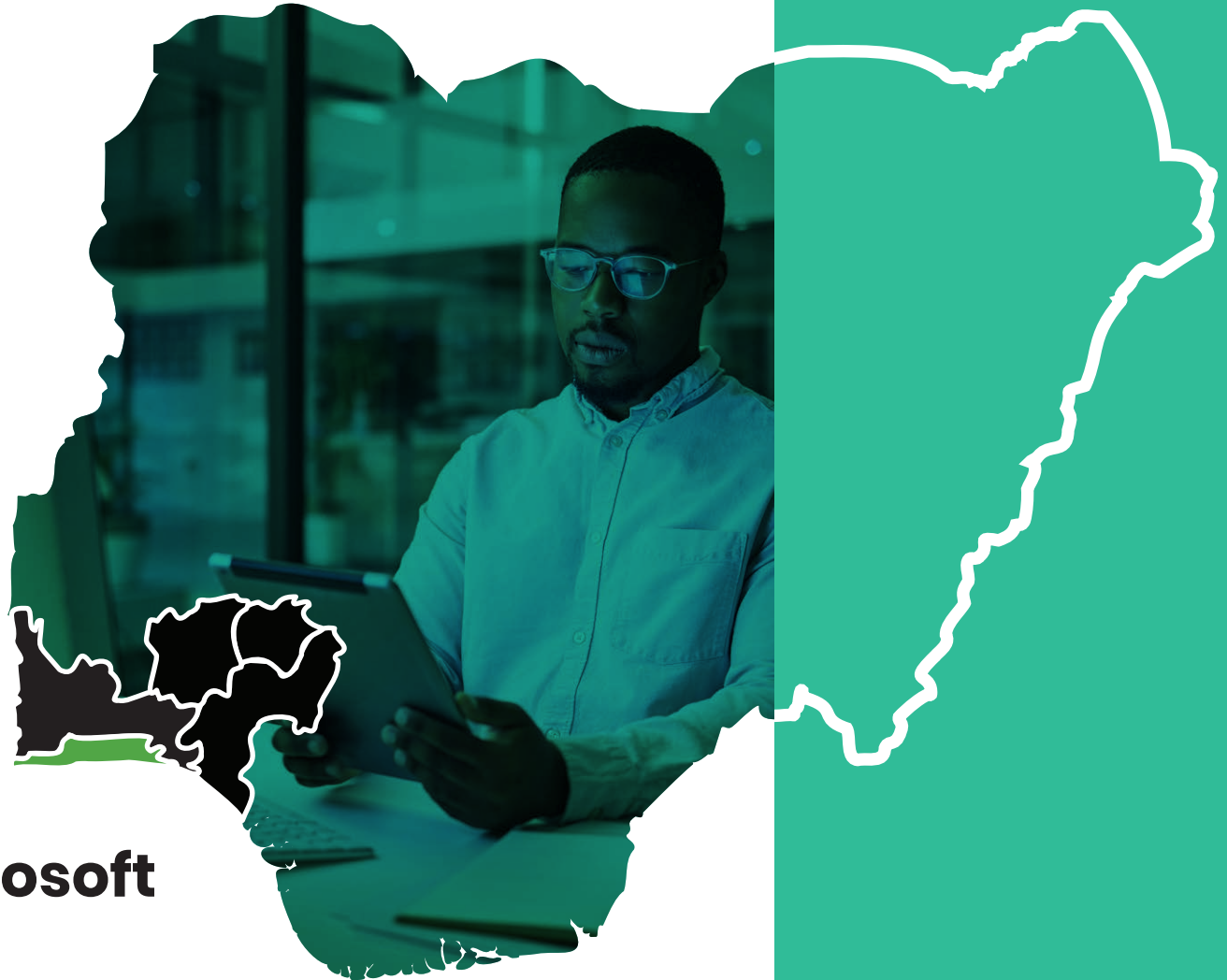
Courses	No of runs	Duration	Fee(N) Exclusive of VAT	Certification fee (\$)	Jan	Feb	Mar	Apr	May	Jun	Jul	Aug	Sep	Oct	Nov	Dec
Data Analytics and Business Intelligence		Day(s)														
Database Design, Technique, and Tools with PL/SQL	5	4	N455,000		20-23				5-8			18-21		13-16	24-27	
Applying Machine Learning & Artificial Intelligence to Business Data	3	5	N500,500					7-11			14-18					1-5
Data Recovery Tools & Techniques	3	3	N325,000			10-12					7-9			20-22		
Data Centers Design, Planning, and Implementation	3	5	N344,500				10-14			16-20					17-21	
Financial Analysis and Investments Fundamentals with Python Programming	2	5	N390,000			17-21							22-26			
Learning Programming with Microsoft Excel Macros and VBA	2	5	N390,000		20-24				12-16							
Certified Data Collection Technician	2	4	N780,000	\$400				7-10			21-24					
Data Analysis, Techniques, Modelling and Strategy	3	5	N455,000				3-7			16-20			15-19			
Big Data on AWS	2	4	N390,000						26-29						3-6	
Machine Learning Fundamental	2	5	N455,000			24-28						11-15				
Market Research, Customer Insights, and Competitor Analysis Using Digital Tools	2	4	N461,500						19-22					20-23		
Certified Hadoop Professional	2	5	N520,000	\$400			17-21								24-28	
Certified Data Analyst Professional	2	5	N520,000	\$400						9-13			8-12			



Data Governance Programmes



Courses	No of runs	Duration	Fee(N) Exclusive of VAT	Certification fee (\$)	Jan	Feb	Mar	Apr	May	Jun	Jul	Aug	Sep	Oct	Nov	Dec
Data Governance		Day(s)														
Data Policies, Procedures and Operating Models	5	4	N461,500			10-13		7-10		2-5		11-14		6-9		
Data Management Fundamentals	5	2	N383,500		27-28		3-4		5-6		7-8		1-2			1-2
Data Quality Management	3	5	N422,500					7-11			7-11			6-10		
Master and Reference Data Management	3	5	N461,500				10-14			16-20			8-12			
Data Modeling	4	3	N461,500						12-14		21-23		15-17			1-3
Data Security and Data Privacy	3	3	N474,500				17-19			9-11					18-20	
Metadata Management	3	5	N461,500					7-11					22-26		11-15	
Data Architecture and Lifecycle Management	3	5	N487,500							23-27				13-17		1-5
Data Security Management	3	4	N474,500				24-27				14-17				11-14	
Document and Content Management	3	5	N461,500.					7-11		2-6				20-24		
Data Storage & Operations Management	3	3	N461,500					22-24				18-20			18-20	
Data Integration and Interoperability	3	3	N422,500						19-21		21-23			6-8		
Data Management for Executives	2	3	N500,000			17-19						11-13				



IT Leadership & Microsoft Programmes



Courses	No of runs	Duration	Fee(N) Exclusive of VAT	Certification fee (\$)	Jan	Feb	Mar	Apr	May	Jun	Jul	Aug	Sep	Oct	Nov	Dec
IT Leadership Training		Day(s)														
Lead Digital Transformation Strategy Executive Programme (Ibom ICON Hotel & Golf Resort)	2	5	N2,350,000							2-6			15-19			
Mastering Disruptive Digital Leadership & Strategic Corporate Governance Programme (Ibom ICON Hotel & Golf Resort)	2	5	N2,350,000								14-18			13-17		
The Advanced Organisational Resilience Programme (Lakowe Lake Resort)	2	5	N2,350,000									18-22			24-28	
The IT Executive Leadership Programme (Obudu Mountain Resort)	2	5	N2,350,000									11-15				1-5
Harnessing AI for Breakthrough Innovation and Strategic Impact Programme (Ikogosi Warm Spring Resort)	2	5	N2,535,000								21-25			6-10		
Leading Remote Cybersecurity Teams and Cybersecurity Resilience	2	5	N500,000			10-14						25-29				
Microsoft Courses																
Power BI Essentials: From Beginner to Advanced Analytics	3	5	N455,000				10-14			16-20				20-24		
Microsoft Power BI	3	5	N585,000		27-31				12-16				8-12			
Microsoft Power Automate	4	5	N585,000			17-21		7-11			7-11		15-19			
Microsoft Power Apps	4	5	N585,000				3-7		12-16					13-17		
Microsoft Azure	3	5	N585,000					7-11		2-6			15-19			
Microsoft Azure Data Engineer	3	5	N585,000						26-30			11-15		6-10		
Microsoft Azure AI Developer	3	5	N585,000					7-11			14-18					1-5
Microsoft Exchange Online	3	5	N520,000				17-21						15-19		10-14	
Microsoft SharePoint Online	3	5	N520,000					7-11			7-11			13-17		
Microsoft One Drive for Business (ODB)	3	5	N520,000				24-28				21-25				17-21	

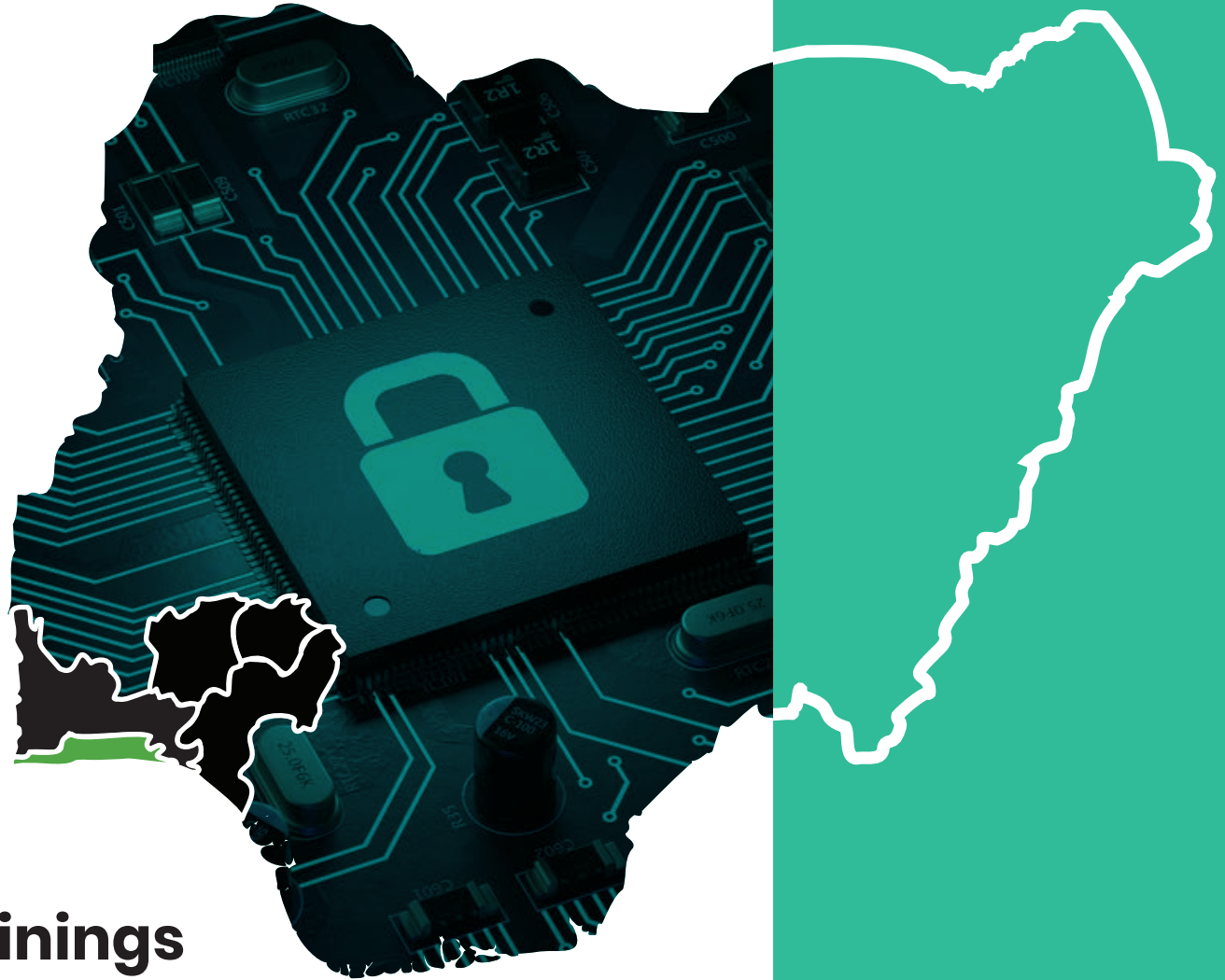
Courses	No of runs	Duration	Fee(N) Exclusive of VAT	Certification fee (\$)	Jan	Feb	Mar	Apr	May	Jun	Jul	Aug	Sep	Oct	Nov	Dec
Microsoft Courses		Day(s)														
Microsoft Azure Fundamental	3	1	N455,000							2				20		
Designing and Implementing Microsoft DevOps Infrastructure	2	5	N585,000		27-31				12-16							
Microsoft .NET	4	5	N585,000				10-14		5-9					27-31		
Microsoft Desktop	3	5	N585,000					7-11		23-27			22-26			
Microsoft Exchange Server	3	5	N585,000						12-16			18-22		13-17		
Microsoft Certified: Azure Solutions Architect	3	5	N520,000						26-30			11-15		6-10		
Azure Database Administrator Associate - DP-300	3	5	N520,000					7-11			14-18					1-5
Power Automate Business Processes	3	5	N585,000				17-21						15-19		10-14	
Oracle Database SQL	3	5	N585,000					7-11			7-11			13-17		
Azure Data Scientist Associate	3	5	N520,000				24-28				21-25				17-21	
AZ-400: Get Started on a DevOps Transformation Journey	3	5	N520,000											27-31		1-5
Azure DevOps Engineer Expert - AZ-400	2	5	N585,000		27-31				12-16							
Microsoft Security, Compliance, and Identity Fundamentals	4	5	N585,000				10-14		5-9					27-31		
Microsoft Security Operations Analyst	3	5	N585,000					7-11		23-27			22-26			
Microsoft Azure Security Administrator - AZ-500	3	5	N585,000						12-16			18-22		13-17		
Flutter Introduction and Basics	3	3	N485,000			10-12				16-18					24-26	
NET Development Basics	2	3	N485,000				24-26				7-9					1-3
API Development Course	2	5	N520,000						12-16				15-19			

Information Security & Payment Systems Programmes



Courses	No of runs	Duration	Fee(N) Exclusive of VAT	Certification fee (\$)	Jan	Feb	Mar	Apr	May	Jun	Jul	Aug	Sep	Oct	Nov	Dec
Information Security		Day(s)														
(ISC)2 CISSP CBK Review Seminar (with exam)	3	5	N500,500	\$850			3-7				14-18			20-24		
Business Continuity Management for Senior Executives	2	4	N494,000							2-5					17-20	
Disaster Recovery Professional (DRP)	3	5	N455,000	\$500		10-14			12-16					27-31		
Ethical Hacking & Counter Measure (CEH) & Certification	4	5	N500,500	\$850				7-11		16-20		4-8			24-28	
Certified Hacking Forensic Investigator (CHFI) & Certification	3	5	N500,500	\$850			10-14				7-11			13-17		
Information Security Incident Investigation and Management	2	5	N461,500					7-11				18-22				
BeingCert Linux Certified Professional	2	4	N520,000	\$400					12-15						17-20	
Certified Data Protection Officer	4	4	N494,000	\$500		17-20		7-10			21-24		8-11			
Cybersecurity & Data Privacy	3	5	N481,000				24-28				28-1		15-19		3-7	
Certified Network Infrastructure Technician (CNIT®)	3	5	N520,000			24-28				23-27		11-15				
Strategic ICT Management for IT and Non -IT Managers	2	4	N390,000						19-22					20-23		
IBM Cybersecurity Analyst Professional	2	4	N390,000			17-20						25-28				
Data Governance	3	3	N400,000	\$1000		10-12			5-7				15-17			
Data Management for Executives	4	3	N500,500					2-4		16-18		11-13		6-8		

Courses	No of runs	Duration	Fee(N) Exclusive of VAT	Certification fee (\$)	Jan	Feb	Mar	Apr	May	Jun	Jul	Aug	Sep	Oct	Nov	Dec
Information Security		Day(s)														
ISO 27701 Privacy Information Management System	3	4	N455,000	500		10-13						18-21		20-23		
ISO/IEC 29100 Privacy Framework Foundation	3	4	N390,000				17-20			16-19				13-16		
ISO/IEC 29100 Certified Lead Privacy Implementer	3	4	N481,000				17-20			16-19				13-16		
Internet of Things for Business Professionals	3	5	N383,500			3-7				2-6					24-28	
Payment Systems																
Payment Card Industry Fundamentals	3	3	N331,500		27-29			2-4					15-17			
Cybersecurity & Fraud Detection in Payment Systems	3	5	N520,000			17-21			12-16					6-10		
Data Analytics for Payment Systems	2	4	N520,000				17-20				21-24					
Payment Systems Stakeholder Engagement and Communication	2	5	N520,000					7-11			14-18					
Payment Systems Leadership & Management Skills	3	4	N520,000			10-13				2-5					10-13	
Ethical Practices & Corporate Governance in Payment Systems	2	5	N520,000				24-28			23-27						



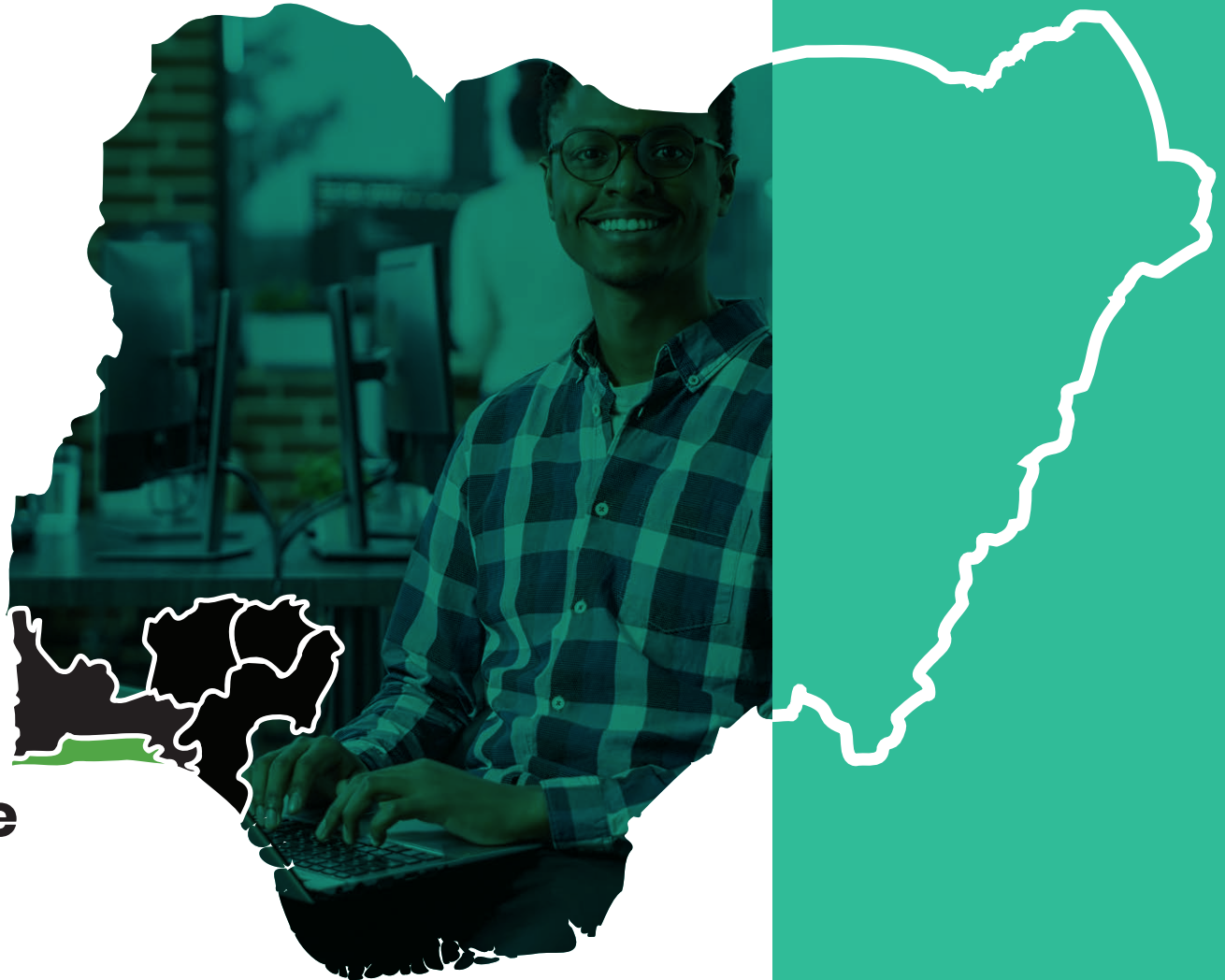
Cybersecurity & Cloudsecurity Trainings



Courses	No of runs	Duration	Fee(N) Exclusive of VAT	Certification fee (\$)	Jan	Feb	Mar	Apr	May	Jun	Jul	Aug	Sep	Oct	Nov	Dec
Cyber Security		Day(s)														
Certified ISO 27032 - Cybersecurity Lead Manager	4	4	N461,500	\$500			10-13				9-12		15-18		17-20	
Cybersecurity Fundamentals for Business	4	3	N331,500				10-12				9-11		15-17		17-19	
ECcouncil Penetration Testing: A Complete Hands-on Approach	3	5	N474,500			24-28			5-9		21-25					
CompTIA Linux+	2	5	N520,000					7-11			14-18					
CompTIA Network+	2	5	N520,000				17-21					11-15				
CompTIA Security+	2	5	N520,000						12-16				22-26			
CompTIA A+	2	5	N520,000			17-21				16-20						
EC-Council Certified Security Analyst (ECSA)	2	5	N552,500						26-30					6-10		
Licensed Penetration Tester (LPT)	3	5	N591,500					7-11			28-1					1-5
Cybersecurity in Oil and Gas	3	5	N448,500						19-23				8-12		24-28	
IATA Aviation Cybersecurity	2	3	N500,500							2-4			1-3			
BeingCert SOC Analyst	2	5	N555,500	\$400					5-9				8-12			
BeingCert Certified Cybersecurity Professional	3	5	N585,500	\$400			17-21			16-20				13-17		
BeingCert Certified Pentest Professional	3	5	N495,000	\$400		24-28			5-9		21-25					

Courses	No of runs	Duration	Fee(N) Exclusive of VAT	Certification fee (\$)	Jan	Feb	Mar	Apr	May	Jun	Jul	Aug	Sep	Oct	Nov	Dec
Cloud Security Trainings		Day(s)														
Certified Cloud Security Professional (CCSP)	4	5	N513,500	\$750				7-11		16-20		11-15		13-17		
BeingCert Certified Cloud Professional	3	5	N500,000	\$400				7-11		16-20				13-17		
Certified Cloud Security Analyst	2	3	N400,000	\$500					19-21			11-13			10-12	
AWS Trainings																
AWS Cloud Practitioner	2	4	N520,000				10-13					18-21				
AWS Solutions Architect	2	5	N520,000					7-11					22-26			
AWS Developer	2	5	N520,000						12-16					6-10		
AWS DevOps Engineer	2	5	N520,000							23-27					3-7	
AWS Operations	2	5	N520,000								14-18					1-5

Fraud Detection, Business Solutions, Machine Learning & Software Development Trainings



Courses	No of runs	Duration	Training Fee(N)	Certification fee (\$)	Jan	Feb	Mar	Apr	May	Jun	Jul	Aug	Sep	Oct	Nov	Dec
Software Development and Security		Day(s)														
Secure Software Development and Certified Software Security Lifecycle Professional Certification(CSSLP)	3	5	N513,500	\$750				7-11		23-27			8-12			
Software Design Principles & Software Architecture	2	5	N513,000			24-28			26-30							
Cloud Services and DevOps Basic	2	5	N520,000				24-28					11-15				
Secure Coding	3	4	N487,500					7-10			14-17			20-23		
BeingCert Certified Secure Coding Professional	2	4	N520,000	\$400							14-17			20-23		
BeingCert Software Testing Professional	2	5	N520,000	\$400			17-21					4-8			17-21	
Software Testing Masterclass	3	5	N474,500						12-16			4-8			17-21	
BeingCert Certified Full Stack Developer	2	5	N520,000	\$400		27-31			12-16					13-17		
BeingCert Certified Web Developer	2	5	N520,000	\$400			24-28					18-22				
BeingCert Python Developer	2	5	N520,000	\$400						30-4				6-10		
BeingCert Certified DevOps Professional	3	5	N520,000	\$400			3-7					25-29			10-14	
Investment Management with Python and Machine Learning Specialisation	2	5	N585,000						26-30			25-29				

Courses	No of runs	Duration	Training Fee(N)	Certification fee (\$)	Jan	Feb	Mar	Apr	May	Jun	Jul	Aug	Sep	Oct	Nov	Dec
Banking Solutions		Day(s)														
e-Business Solutions & Digital Transaction Banking Trainings	3	4	N455,000				10-13					11-14		13-16		
Open Banking	3	4	N390,000		27-30					16-19					3-6	
Fraud Detection																
Excellence in Fraud Investigation Detection and Control Programme	2	4	N487,500					7-10	12-15				22-25			
IT Auditing & Fraud Detection	2	3	N422,500						19-21			18-20				
Fraud Risk Management	2	4	N422,500							30-3				6-9		
Certified Fraud Examiner	2	4	N565,500	\$750			3-6				7-10					
Machine Learning																
Introduction to Machine Learning in Production	3	5	N448,500				17-21				21-25				10-14	
Investment Management with Python and Machine Learning Specialisation	2	5	N585,000						26-30			25-29				



SAP & Salesforce Trainings



Courses	No of runs	Duration	Fee(N) Exclusive of VAT	Certification fee (\$)	Jan	Feb	Mar	Apr	May	Jun	Jul	Aug	Sep	Oct	Nov	Dec
SAP Courses		Day(s)														
SAP Ticketing	2	3	N390,000							2-4				13-15		
SAP Finance and Controlling	2	5	N520,000			24-27					7-11					
SAP Data Security	2	5	N520,000				17-21						15-19			
SAP Data Hub	2	5	N520,000					7-11				18-22				
SAP HANA	3	5	N520,000		27-31			7-11			28-1					
SAP BusinessObjects	3	5	N520,000			17-21		7-11					8-12			
SAP ERP	3	5	N520,000				24-28			16-20			22-26			
SAP ABAP	3	5	N520,000					7-11			14-18		15-19			
SAP Business Warehouse	3	5	N520,000						12-16			11-15		20-24		
SAP Supply Chain Management	3	5	N520,000		27-31						7-11				17-21	
SAP NetWeaver	3	5	N520,000			3-7				9-13				6-10		

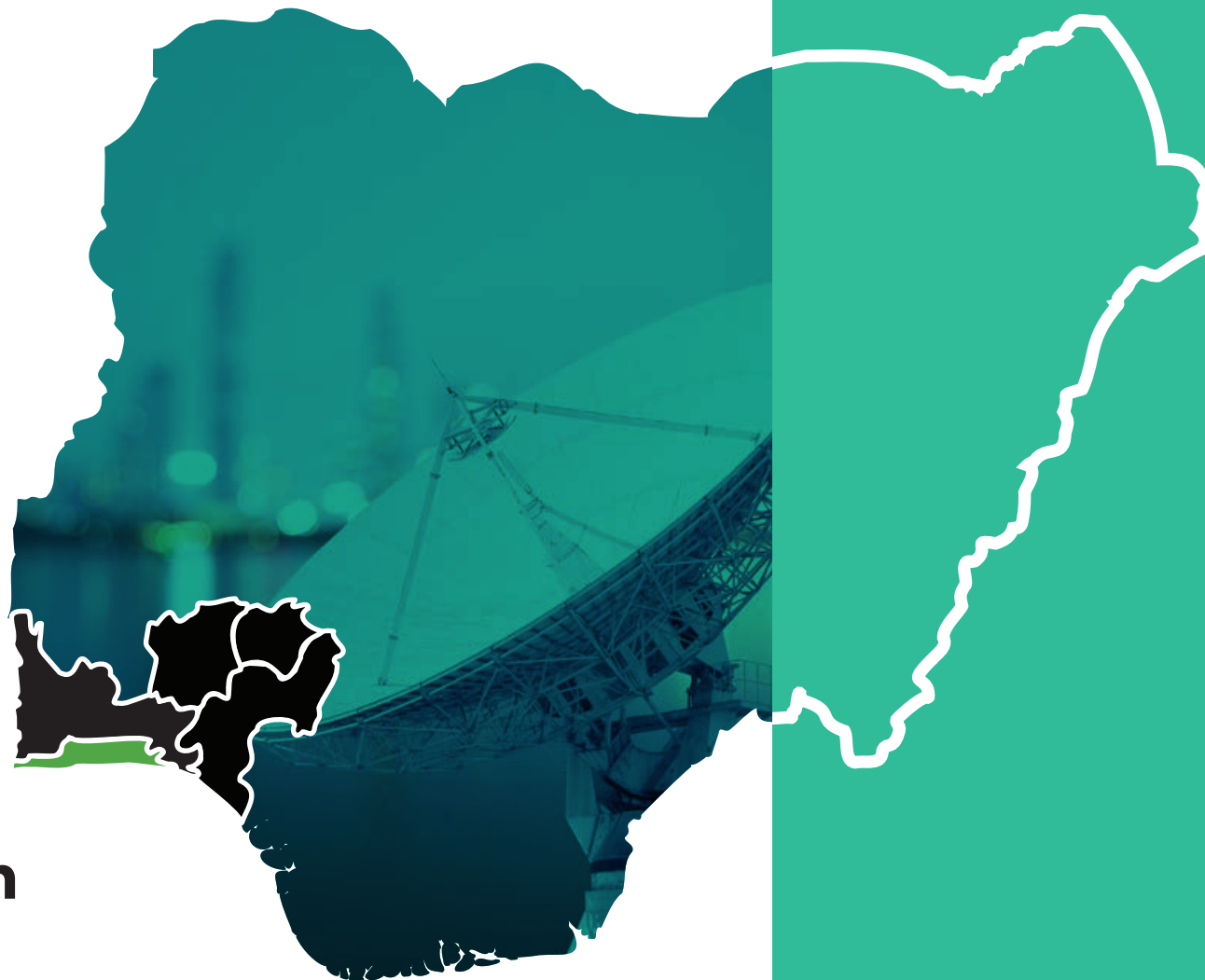
Courses	No of runs	Duration	Fee(N) Exclusive of VAT	Jan	Feb	Mar	Apr	May	Jun	Jul	Aug	Sep	Oct	Nov	Dec
SalesForce Courses		Day(s)													
SalesForce Beginner Administrator (With exams)	3	3	N520,000		3-5				23-25		18-20				
SalesForce App Builder	3	5	N520,000			10-14		19-23					13-17		
SalesForce Platform Developer 1	3	4	N520,000				7-10		2-5			22-25			
SalesForce Platform Developer 2	4	5	N520,000					12-16		21-25			6-10		1-5



Cisco Trainings



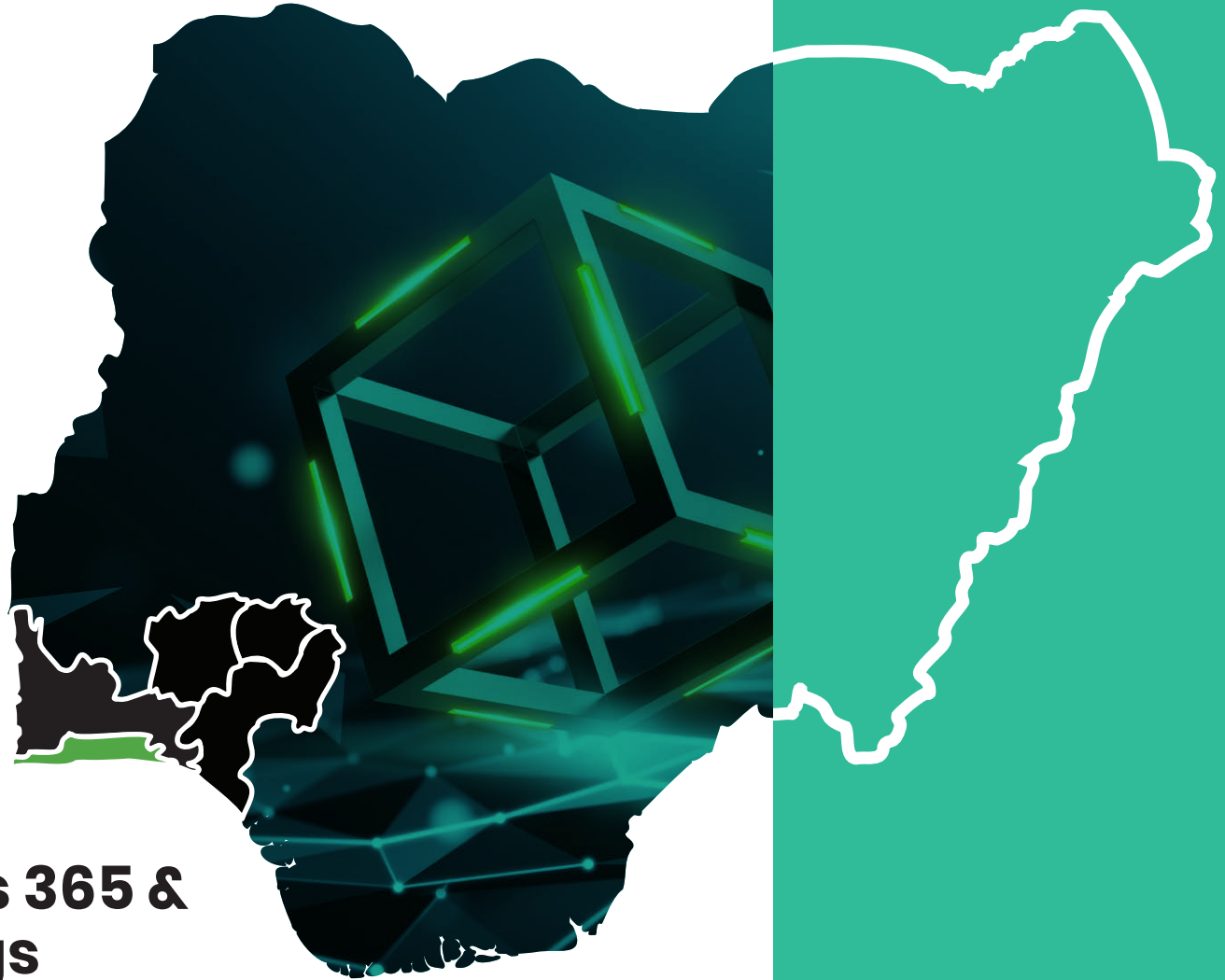
Courses	No of runs	Duration	Training Fee(N)	Certification fee (\$)	Jan	Feb	Mar	Apr	May	Jun	Jul	Aug	Sep	Oct	Nov	Dec
CISCO Trainings		Day(s)														
Cisco Cloud	2	5	N520,000							2-6					3-7	
Cisco Collaboration	2	5	N520,000						12-16					13-17		
Cisco Data Center	2	5	N520,000					7-11					15-19			
Cisco Enterprise	2	5	N520,000				17-21					18-22				
Cisco Wireless	2	5	N520,000								14-18					1-5
Cisco Unified	2	5	N520,000			3-7				16-20						
Cisco Service Provider	2	5	N520,000					7-11				11-15				
Cisco Security	2	5	N520,000						5-9				8-12			
Cisco Routing & Switching	2	5	N520,000				24-28								10-14	
Cisco Network Automation	2	5	N520,000					7-11						20-24		
Cisco Certified Network Associate Enterprise (200-301)	2	5	N520,000						12-16					6-10		
Cisco Certified Network Professional Enterprise (350-401 ENCORE)	2	5	N520,000							9-13			22-26			
Cisco Certified Network Professional Enterprise (300-410 ENARSI)	2	5	N520,000								7-11				17-21	



Telecommunication Programmes



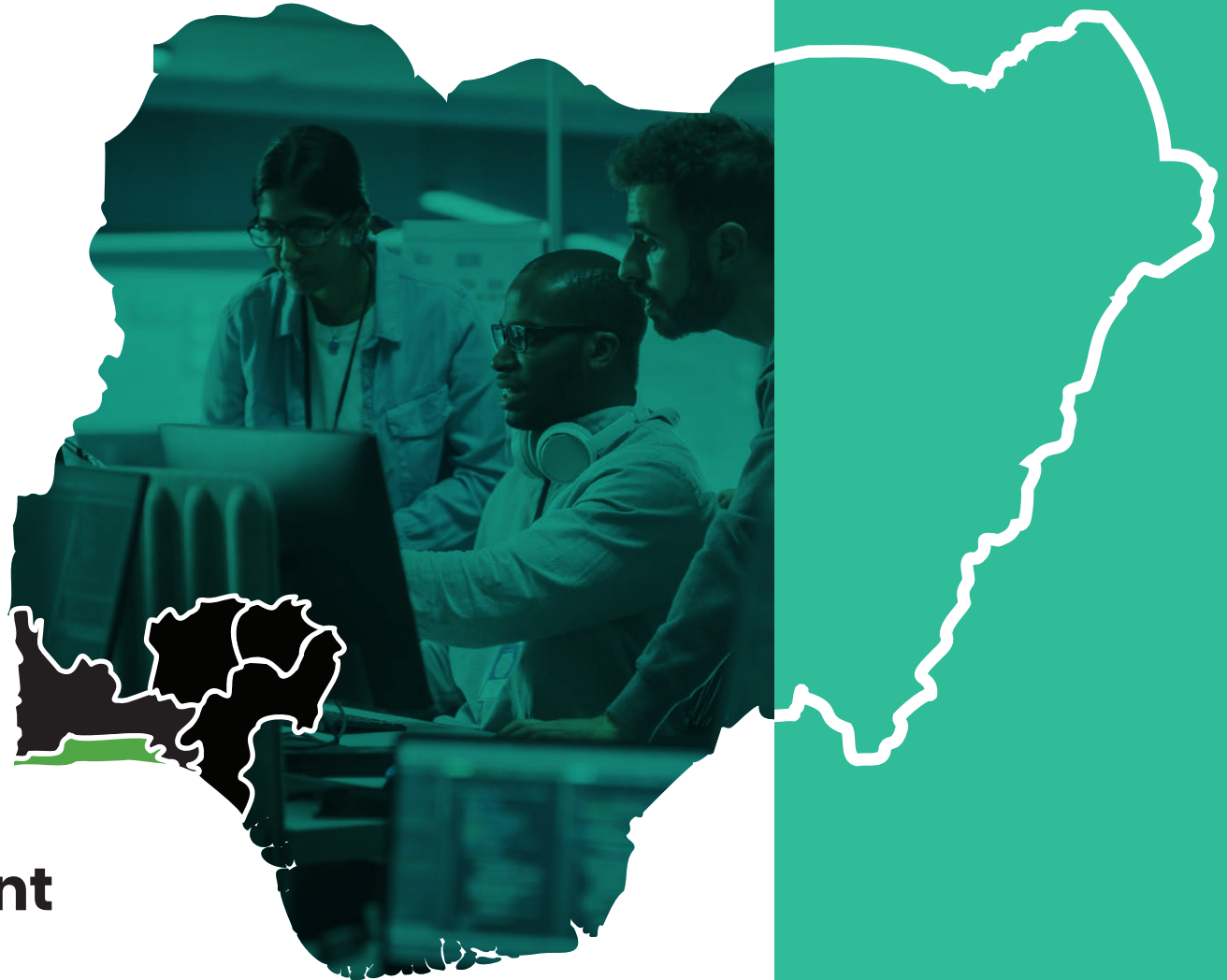
Courses	No of runs	Duration	Training Fee(N)	Certification fee (\$)	Jan	Feb	Mar	Apr	May	Jun	Jul	Aug	Sep	Oct	Nov	Dec
Telecom Trainings		Day(s)														
Digital Procurement and Vendor Management	5	5	N513,500		27-31				5-9			18-22		13-17	17-21	
Digital Procurement Transformation	3	5	N520,000					7-11			28-1					1-5
Spend Analysis Tools	3	5	N550,000			17-21					7-11			6-10		
e-Procurement Systems	3	5	N520,000				3-7			16-20					10-14	
Contract Management Software	3	5	N520,000				24-28			23-27			8-12			
Security and Surveillance Technologies	3	4	N500,000						5-8			11-14			3-6	
Artificial Intelligence in Legal Research	3	5	N520,000					14-18		2-6			15-19			
Patent Analysis and Intellectual Property (IP) Management	3	5	N520,000			17-21			5-9			4-8				
Telecom Standards and Protocols	2	5	N550,000				10-14				14-18					
Telecom Regulatory Framework	2	5	N461,500					7-11		16-20						
Telecom Law and Regulations	3	5	N520,000						19-23			25-29		20-24		
Spectrum Management	2	4	N520,000						19-22						24-27	
The Committee of Sponsoring Organisations (COSO Framework)	3	4	N520,000			24-27					21-24			27-30		
Cybersecurity & Data Privacy in the Telecom Industry	3	5	N520,000					7-11		16-20						1-5



Microsoft Dynamics 365 & Blockchain Trainings



Courses	No of runs	Duration	Fee(N) Exclusive of VAT	Certification fee (\$)	Jan	Feb	Mar	Apr	May	Jun	Jul	Aug	Sep	Oct	Nov	Dec
Microsoft Dynamics 365		Day(s)														
Microsoft Dynamics 365 Commerce	3	5	N520,000				10-14				9-13				3-7	
Microsoft Dynamics 365 Supply Chain	3	5	N520,000					7-11				11-15		6-10		
Microsoft Dynamics 365 Finance	3	5	N520,000						12-16			18-22		27-31		
Microsoft Dynamics 365 HR	3	5	N520,000							2-6			15-19		10-14	
Microsoft Dynamics 365 Customer Insights	3	5	N520,000						26-30			25-29				1-5
Microsoft Dynamics 365 Customer Relationship Management	3	5	N520,000					7-11			28-1		22-26			
Customisation & Integration of Enterprise Application with Microsoft	4	5	N520,000				17-21				14-18			13-17		
Blockchain and Digital Currency																
Certified Blockchain Developer	3	5	N520,000		27-31			7-11			21-25			20-24		
Certified Enterprise Blockchain Professional	4	5	N520,000			17-21			19-23						10-14	
Trading with Technical Analysis	2	4	N455,000				10-13					4-8				



IT Governance & Service Management Programmes



Courses	No of runs	Duration	Fee(N) Exclusive of VAT	Certification fee (\$)	Jan	Feb	Mar	Apr	May	Jun	Jul	Aug	Sep	Oct	Nov	Dec
IT Governance and Service Management		Day(s)														
TOGAF (9.2) Enterprise Architecture Combined Foundation and Practitioner (with exams)	5	5	N487,500	\$850	27-31		3-7		5-9			4-8			10-14	
TOGAF (9.2) Integrating Risk & Security Combined Foundation and Practitioner (with exams)	3	5	N487,500	\$850					19-13				8-12			1-5
TOGAF 10 Enterprise Architecture Foundation and Practitioner	3	5	N585,000	\$900		17-19			12-14				22-24			
TOGAF 10 Business Architecture Foundation and Practitioner	3	5	N585,000	\$900						16-19					17-20	
IT Strategy & Governance	4	3	N370,500				17-19		19-21			4-6		13-15		
Certified in Governance & Enterprise Information Technology (CGEIT)	4	5	N500,000	\$1000			17-21		19-23			4-8		13-17		
Executive Awareness in IT Service Management	3	3	N370,500				10-12				7-9					
Business Architecture Design for Non-IT	3	4	N387,400					7-10			14-17					1-4
TOGAF 9.2 Business Architecture Combined Foundation & Practitioner (with exams)	3	5	N487,500	\$850				7-11			14-18					1-5
Capability Maturity Model Integration for Development (CMMI- DEV)	3	5	N520,000				10-14			23-27			15-19			
COBIT® 2019 Foundation	4	2	N325,000	\$300			17-18			9-10			1-2		24-25	
COBIT® 2019 Design and Implementation	4	3	N455,000	\$400			17-19			9-11			1-3		24-26	
ITIL 4® Foundation & Certification (with exam)	6	3	N299,000	\$400	27-29			22-24		2-4		4-6		6-8		
ISO 38500 IT Corporate Governance	3	4	N455,000	\$600					26-29				22-25		10-12	

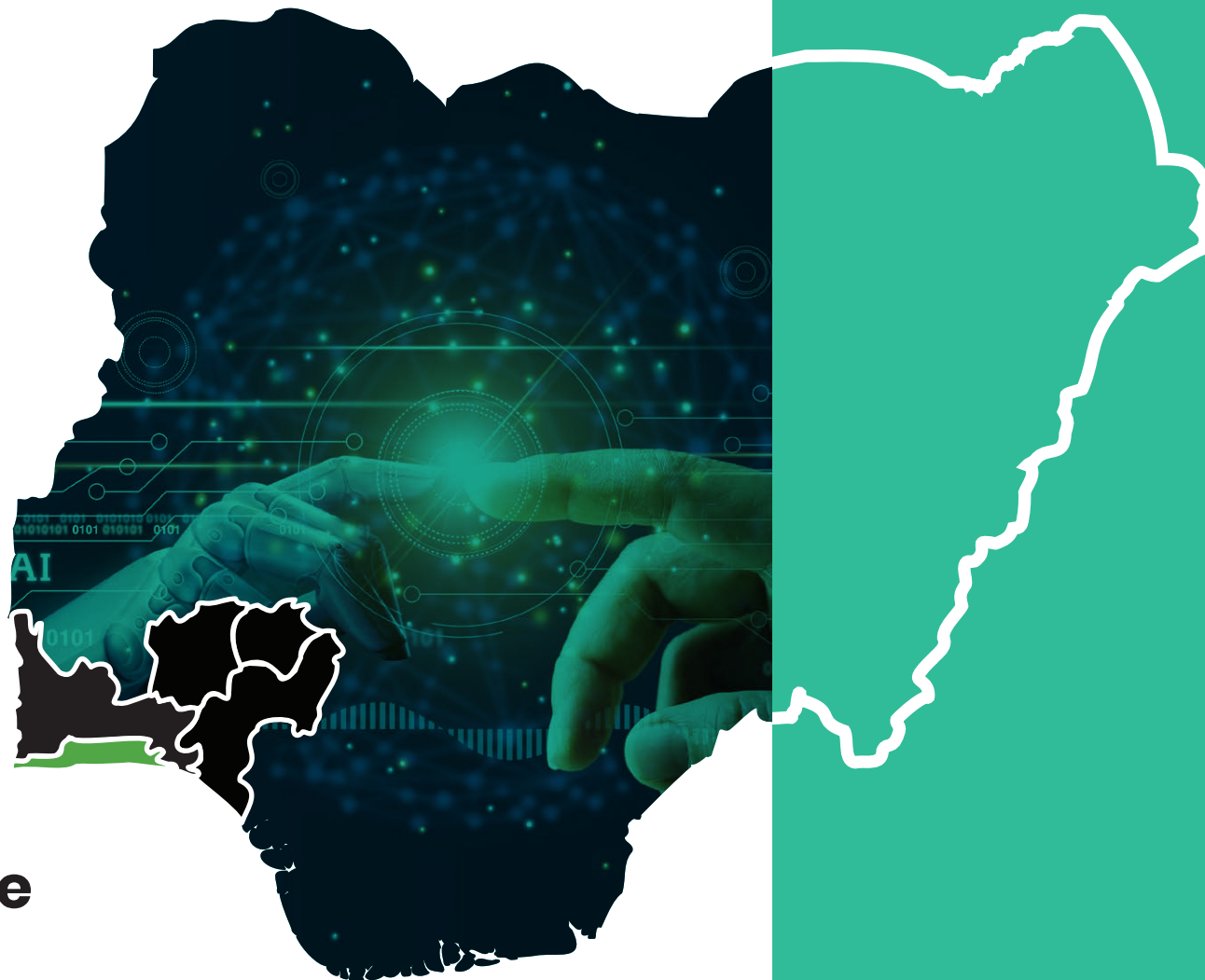


IT Risk & GRC Programmes



Courses	No of runs	Duration	Fee(N) Exclusive of VAT	Certification fee (\$)	Jan	Feb	Mar	Apr	May	Jun	Jul	Aug	Sep	Oct	Nov	Dec
IT Risk & Compliance		Day(s)														
OHSAS 45001 (Occupational Health & Safety Management Systems) Lead Auditor & Certification	3	5	N500,000	\$500		10-14						11-15			3-7	
OHSAS 45001 (Occupational Health & Safety Management Systems) Lead Implementer & Certification	3	5	N500,000	\$500			3-7			2-6			8-12			
ISO 50001 (Energy Management System) Lead Auditor & Certification	3	5	N500,000	\$500		17-21						25-29			10-14	
ISO 50001 (Energy Management System) Lead Implementer & Certification	3	5	N500,000	\$500			24-28				7-11		22-26			
ISO 55000 Asset Management System	3	5	N500,000	\$500				7-11		16-20				6-10		
ISO/IEC 20000 Lead Auditor & Certification	3	5	N500,000	\$500				7-11			21-25					1-5
ISO/IEC 20000 Lead Implémenter & Certification	3	5	N500,000	\$500		24-28							15-19		17-21	
ISO/IEC 20000 Practitioner & Certification	3	5	N500,000	\$500				7-11					8-12			1-5
ISO 27001 Lead Auditor & Certification	4	5	N500,000	\$500		3-7			5-9			18-22			10-14	
ISO 27001 Lead Implementer & Certification	4	5	N500,000	\$500					5-9		28-1		15-19		3-7	
ISO 22301 - Business Continuity Management Lead Auditor Certification	4	5	N500,000	\$500			17-21			23-27			22-26			1-5
ISO 22301 - Business Continuity Management Lead Implementer Certification	4	5	N500,000	\$500		17-20				16-20		4-8			24-28	
Managing Fraud in a Digitalised World	2	5	N565,000				3-7							6-10		

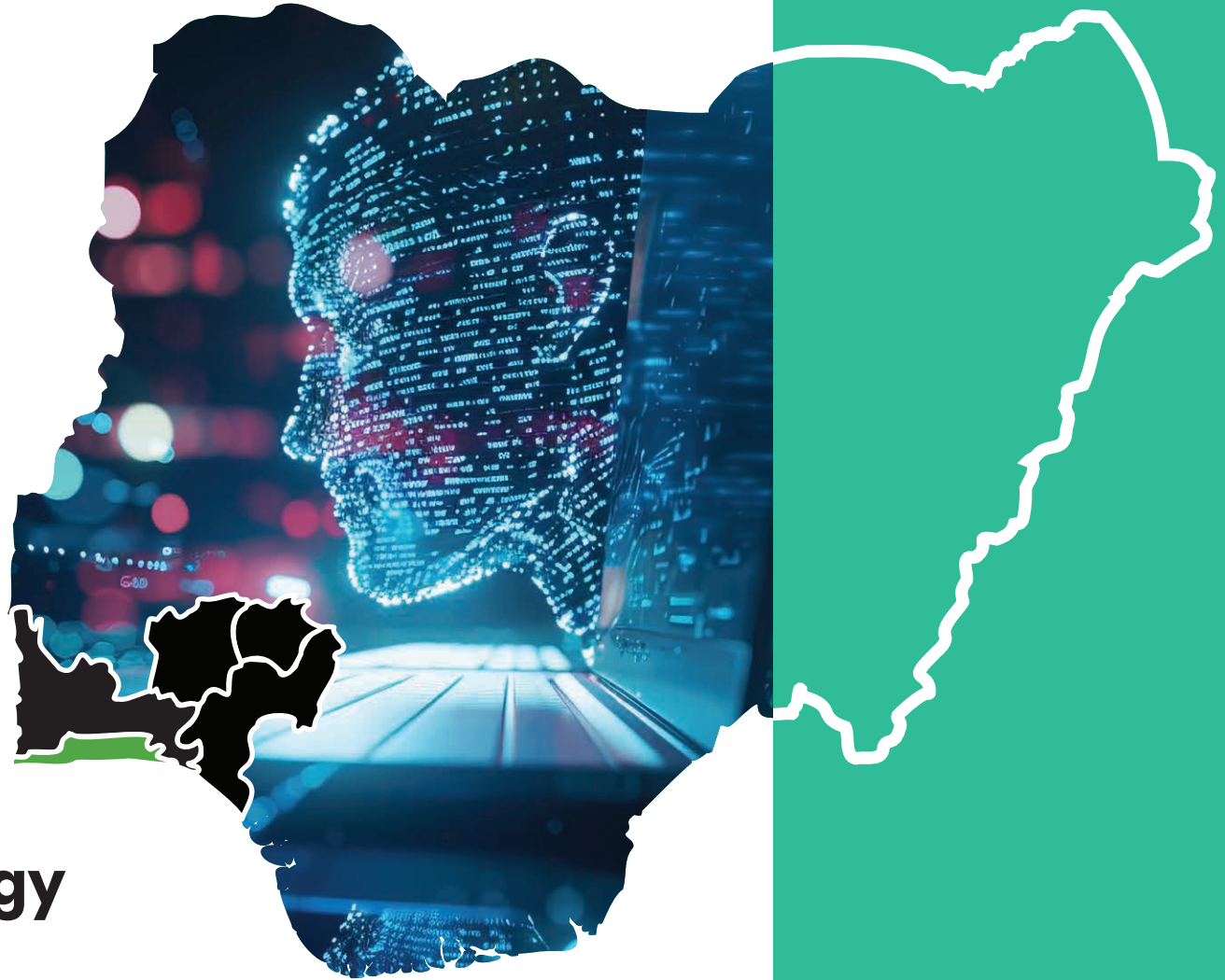
Courses	No of runs	Duration	Fee(N) Exclusive of VAT	Certification fee (\$)	Jan	Feb	Mar	Apr	May	Jun	Jul	Aug	Sep	Oct	Nov	Dec
IT Risk & Compliance		Day(s)														
Improving Productivity Through Quality Enhancement & Cost Reduction	2	5	N390,000				17-21					4-8			10-14	
Certified in Risk and Information Systems Control (CRISC) Bootcamp	3	5	N520,000	\$1000				7-11				25-29			24-28	
Compliance Risk Management	3	3	N390,000			10-12			5-7				1-3			
Enterprise Risk Management	3	3	N395,000				17-19				28-30				10-12	
ISO 9001 Quality Management Systems Lead Auditor & Certification	3	5	N500,000	\$500				7-11			21-25		22-26	27-31		
ISO 9001 Quality Management Systems Lead Implementer & Certification	3	5	N500,000	\$500			17-21					18-22			3-7	
Quality Assurance and Food Safety Management	3	4	N500,000			24-27			19-22					13-16		
Certified Information Security Manager® (CISM)	3	5	N520,000	\$1000				7-11			14-18				3-7	
CISA® (Certified Information Systems Auditor®)	3	5	N520,000	\$1000			24-28			23-27				6-10		



Artificial Intelligence Programmes



Courses	No of runs	Duration	Fee(N) Exclusive of VAT	Certification fee (\$)	Jan	Feb	Mar	Apr	May	Jun	Jul	Aug	Sep	Oct	Nov	Dec
Artificial Intelligence		Day(s)														
AI for Business Optimisation and Productivity	4	2	N480,000				17-18			9-10			1-2		24-25	
AI Prompt Engineering for Professionals	4	2	N480,000					7-8			14-15		15-16			1-2
AI for Business	6	2	N480,000		27-29			22-24		2-3		4-5		13-14		1-2
Responsible AI Use for Organisational Data Protection and Safety	3	2	N480,000				17-18			9-10			1-2			
AI for Business Leaders: Strategy and Implementation	2	2	N480,000									18-19			17-18	
AI-Powered Decision Making	3	2	N480,000						5-6		21-22			20-21		
Introduction to Machine Learning for Executives	3	3	N500,000					22-24				25-27				
AI-Driven Marketing and Sales Optimisation	2	2	N480,000								7-8			27-28		
Ethical AI: Trust, Privacy and Responsible AI Development	2	2	N480,000						12-13			11-12				
AI and Cybersecurity: Protecting Digital Assets	3	2	N480,000			24-25					14-15					1-2
Application Security Dynamics & AI	2	5	N450,000							16-20					3-7	




Emerging Technology Programmes



Courses	No of runs	Duration	Fee(N) Exclusive of VAT	Certification fee (\$)	Jan	Feb	Mar	Apr	May	Jun	Jul	Aug	Sep	Oct	Nov	Dec
Emerging Technologies		Day(s)														
BeingCert Certified AI Professional	3	5	N520,000				10-14			2-6			22-26			
BeingCert Certified IoT Professional	2	5	N520,000					7-11			28-1					1-5
BeingCert Certified Blockchain Professional	3	5	N520,000		27-31					16-20				13-17		1-5
BeingCert Machine Learning Professional	2	5	N520,000				22-26					4-8				



International Programmes



At Phillips Consulting (pcl.), we recognise the profound impact that global learning experiences can have on individuals seeking to excel in their respective fields. We have invested significant effort in establishing strong partnerships with renowned global institutions to bring this vision to life.

Our partners include:

- Jesus College in the University of Cambridge
- Howard University, Washington DC
- Terry School of Business, Atlanta, GA
- University of Pretoria, Pretoria, South Africa

Through these partnerships, we offer business leaders and executives access to a wide range of world-class resources, including cutting-edge research, best practices, and expert insights, which allows them to stay at the forefront of industry trends, global developments, and the ability to navigate and shape the business landscape.

Courses	No of runs	Duration	Fee(\$)	Jun	Jul	Sep	Nov	Dec
Creative Leadership Strategies for the Future of Work: Intellectual Forum. Jesus College, Cambridge University, United Kingdom.	2	4 Days	\$10,000	10-13			18-21	
Disruptive Leadership Masterclass, Jesus College, Cambridge University, United Kingdom	2	1 week	\$10,000		7-11			
The Global Executive Leadership Programme; Howard University, Washington DC, USA	2	1 week	\$6,750	23-27		8-12		
Strategic Thinking, Planning & Execution for Executives, Howard University, Washington DC	2	1 week	\$6,750		21-25	15-19	10-14	
Global Business Leadership, Terry School of Business, University of Georgia	2	1 week	\$6,750	16-20		1-5		
Executive Management Development Programme, University of Pretoria, South Africa	2	1 week	\$6,750		14-18		3-7	
Building the Future Ready Board – Abu Dhabi ,UAE	2	1 week	\$10,500			15-19		1-5

Courses	No of runs	Duration	Fee(\$)	Jun	Jul	Nov	Dec
Mastering Disruptive Digital Leadership & Strategic Corporate Governance Programme United Kingdom	2	1 week	\$8,775			10-14	
Lead Digital Transformation Strategy Executive Programme United Kingdom	2	1 week	\$8,775	23-27		10-14	
The Advanced Organisational Resilience Programme Washington DC, USA	1	1 week	\$8,775		14-18		2-6
IT Executive Leadership Washington Programme DC, USA	2	1 week	\$8,775			24-28	
Harnessing AI for Breakthrough Innovation and Strategic Impact. (South Africa)	1	1 Week	\$8,775			24-28	





Our Faculty

Our esteemed faculty comprises, though is not confined to, an illustrious group of individuals

Our faculty is a distinguished group of accomplished professionals, industry veterans, and thought leaders passionate about developing talent and driving impactful learning experiences. Each team member brings a unique blend of extensive knowledge, practical experience, and innovative approaches, ensuring our training programs are informative and transformative.

With backgrounds spanning various industries, including finance, management, technology, communication, and leadership, our faculty members are adept at translating complex

concepts into accessible, actionable insights. They draw from their career experiences, case studies, and current best practices, equipping participants with the tools and confidence needed to excel in their roles.

Our faculty's highly interactive approach combines expert-led discussions, hands-on activities, real-world simulations, and case analyses that engage participants and foster a deep understanding of the subject matter. They are educators and mentors who take a vested interest in each participant's personal and professional growth.

Dedicated to continuous learning and staying at the forefront of their respective fields, our faculty regularly update their content to reflect the latest trends, technologies, and methodologies. This commitment ensures that our training programs are always relevant, forward-thinking, and aligned with the evolving needs of today's business environment.

Our faculty's diverse expertise, commitment to excellence, and passion for teaching make them invaluable assets to our training initiatives. They guide participants toward achieving exceptional results and lasting success in their careers.



LAGOS CENTRE

0906 000 0804
enquiry@phillipsconsulting.net

TECHNOLOGY PROGRAMMES

Technology Training
0909 363 9259
technology@phillipsconsulting.net

ABUJA CENTRE

0806 666 9070
enquiry@phillipsconsulting.net




INTERNATIONAL PROGRAMMES

Training
0803 402 0520
pcltraininghub@phillipsconsulting.net

Technology Training
0909 363 9259
technology@phillipsconsulting.net

Transforming Possibilities

 Phillips Consulting  Phillips Consulting Limited

 @PCLAfrica  Phillips Consulting Limited  Phillips_Consulting