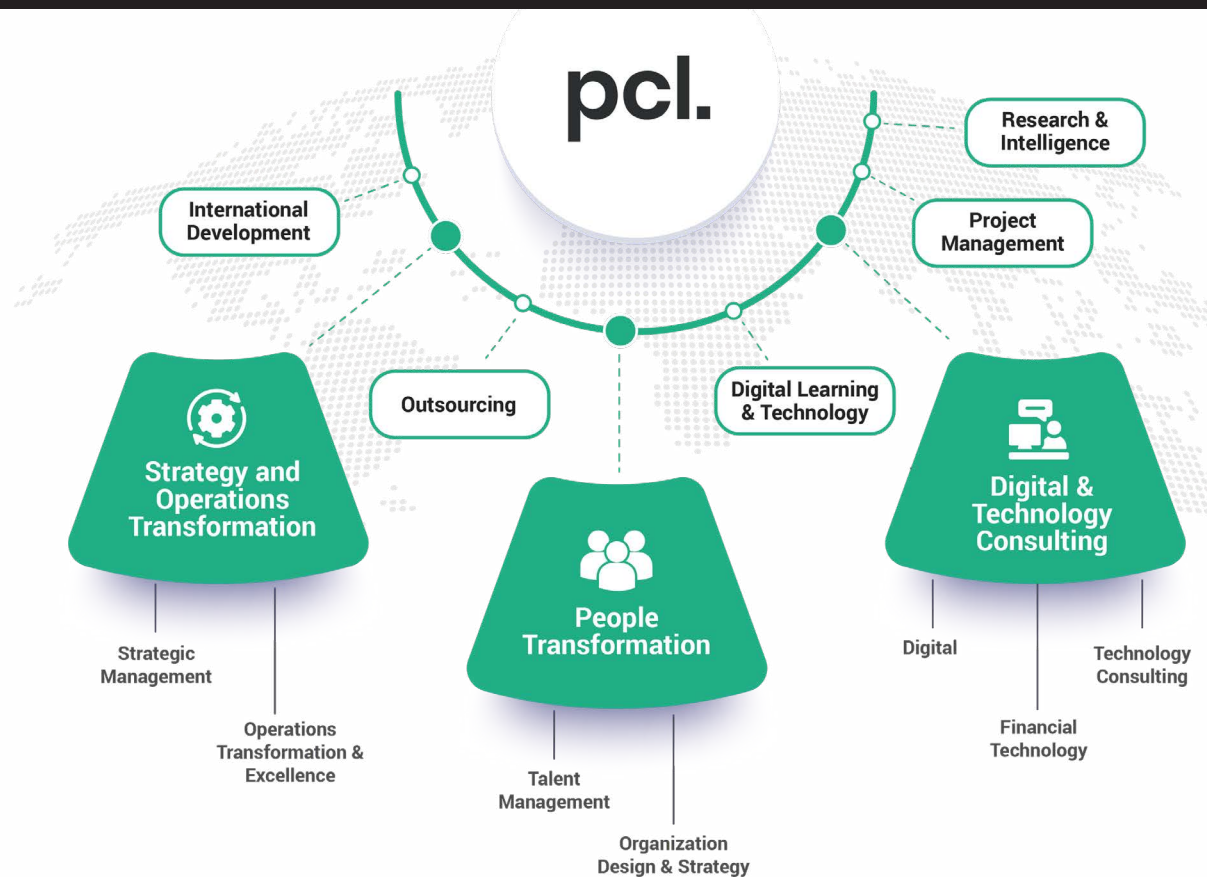


2024  
pcl.  
**Training  
Calendar**



# About Us



Founded in 1992 and headquartered in Nigeria, Phillips Consulting Limited (pcl.) is a leading business and management consulting firm serving clients across Africa through offices in Lagos and Abuja.

We are a leading provider of transformation, technology, and outsourcing services.

Our staff represents diverse professional disciplines, ranging from business strategy, transformation & change, digital, information technology, digital and training. Our people are practitioners and professionals who combine in-depth consulting knowledge with leading industry experts - many having worked with leading international organisations and delivered successful outcomes across the public and private sectors

# The Value We Bring



## > Good understanding of the Nigerian Business Environment

Phillips Consulting Limited (pcl.) has, over the past 30 years, built up a robust understanding of acceptable business practices and procedures for executing projects in Nigeria, as well as an understanding of the reputation and strengths of key players and stakeholders in the Nigerian Market.



## > Strong Corporate and Public Sector Network

We work with private and public sector clients, including multinationals and leading Nigerian companies. We also work with Ministries and Government agencies at both Federal and State levels. This diverse client base has enabled us to develop valuable relationships with key decision-makers across various sectors.



## > Talent Pool

Phillips Consulting (pcl.) anchors its strength on the selection and development of its multidisciplinary consultants. The firm has highly experienced and dynamic consultants who are fully conversant with leading business practices. Our consultants are at the cutting edge of trends and developments in their respective fields.



## > Relevant Knowledge

We have a track record of successful execution in organisational restructuring, transformation, implementation/execution support, project management, change management, post-merger support, business process development, corporate governance, digital, process automation, learning, and technology deployment. All of which demonstrates our versatility.



# Why pcl.

## We have significant experience in driving delivery and getting results



We have an in-depth understanding of several sectors, their strategic direction, and interdependencies.



We are a respected brand in Nigeria with a passion for delivering long-term sustainable solutions in the region.



We have the local understanding and reach. We have significant experience of working with government agencies and navigating political nuances as they arise.



We have structured mechanisms that ensure service delivery to cost, time, quality, and scope.

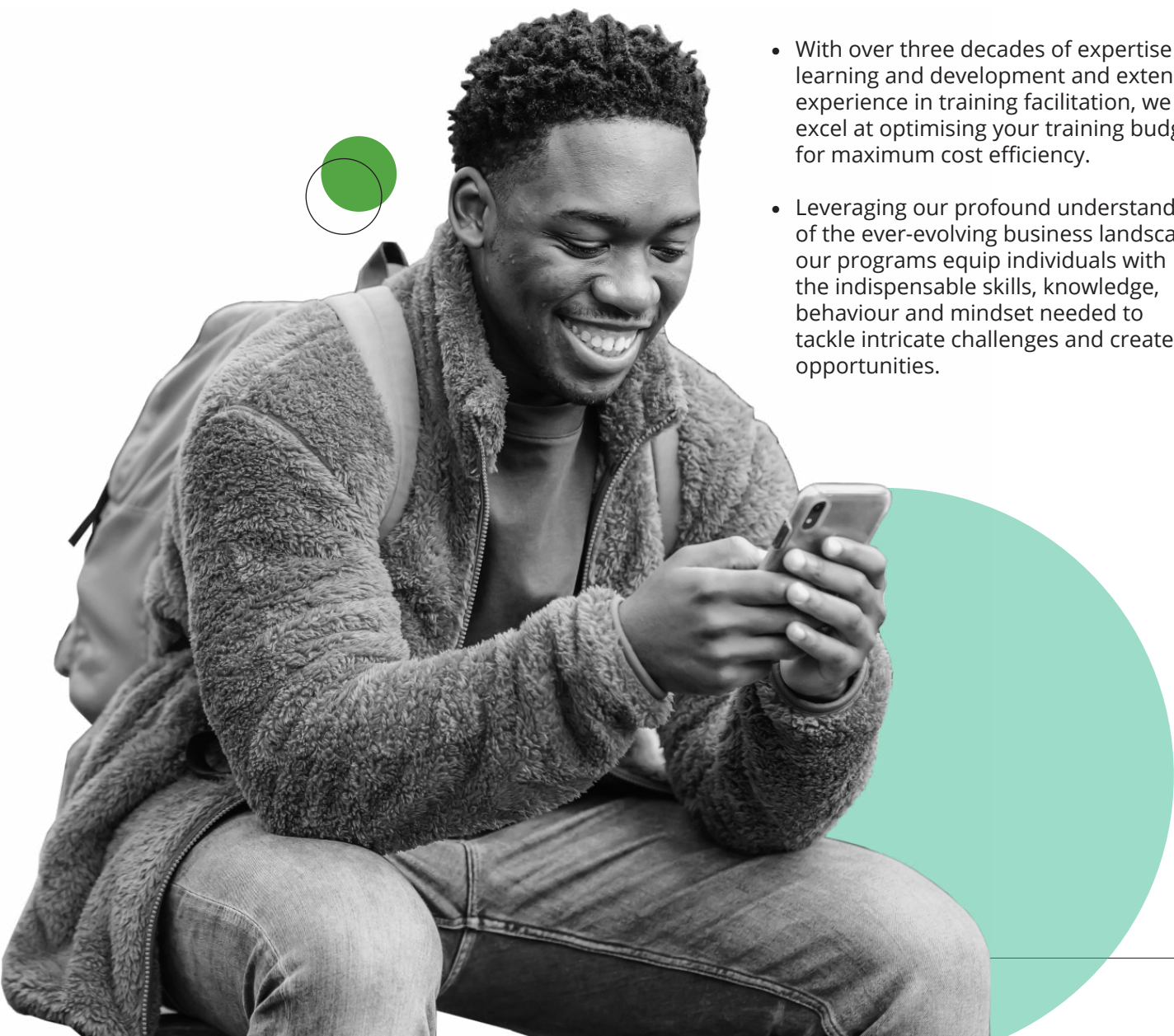


Our talented team possesses significant consulting and research capabilities, coupled with business transformation expertise. They are proficient in skills and needs assessments, with a track record of solution design and implementation.





# Why Choose Us For Your Learning Interventions?



- With over three decades of expertise in learning and development and extensive experience in training facilitation, we excel at optimising your training budget for maximum cost efficiency.
- Leveraging our profound understanding of the ever-evolving business landscape, our programs equip individuals with the indispensable skills, knowledge, behaviour and mindset needed to tackle intricate challenges and create opportunities.
- Our learning methodologies have evolved in tandem to meet the needs of future learners. We have adopted the flipped learning approach and learning on the Metaverse to ensure the utmost relevance and impact.
- We are in strategic partnerships with esteemed global institutions and business schools. These collaborations guarantee our clients receive the most pertinent and impactful learning experiences founded on the latest research and industry best practices
- We are committed to delivering the most relevant learning experience tailored to your objectives while collaboratively identifying a program that aligns with your needs and budget.
- Our steadfast dedication to delivering the highest calibre of professional development has consistently resulted in outstanding outcomes for individuals and organisations.

# Pcl. Learning Approach and Methodology

---



# Our Learning Approach

Our five-Step methodology will ensure that all our courses are engaging and relevant to the job roles of our delegates:



## Listen

To delegates needs by deploying a series of assessments and conducting interviews.

## Articulate

A holistic set of needs and outcomes based on the profiles of delegates.

## Infuse

The needs of learners into existing courses and customise cases and simulations accordingly

## Deliver

A highly participative session with opportunities to discuss real life challenges in a supportive environment

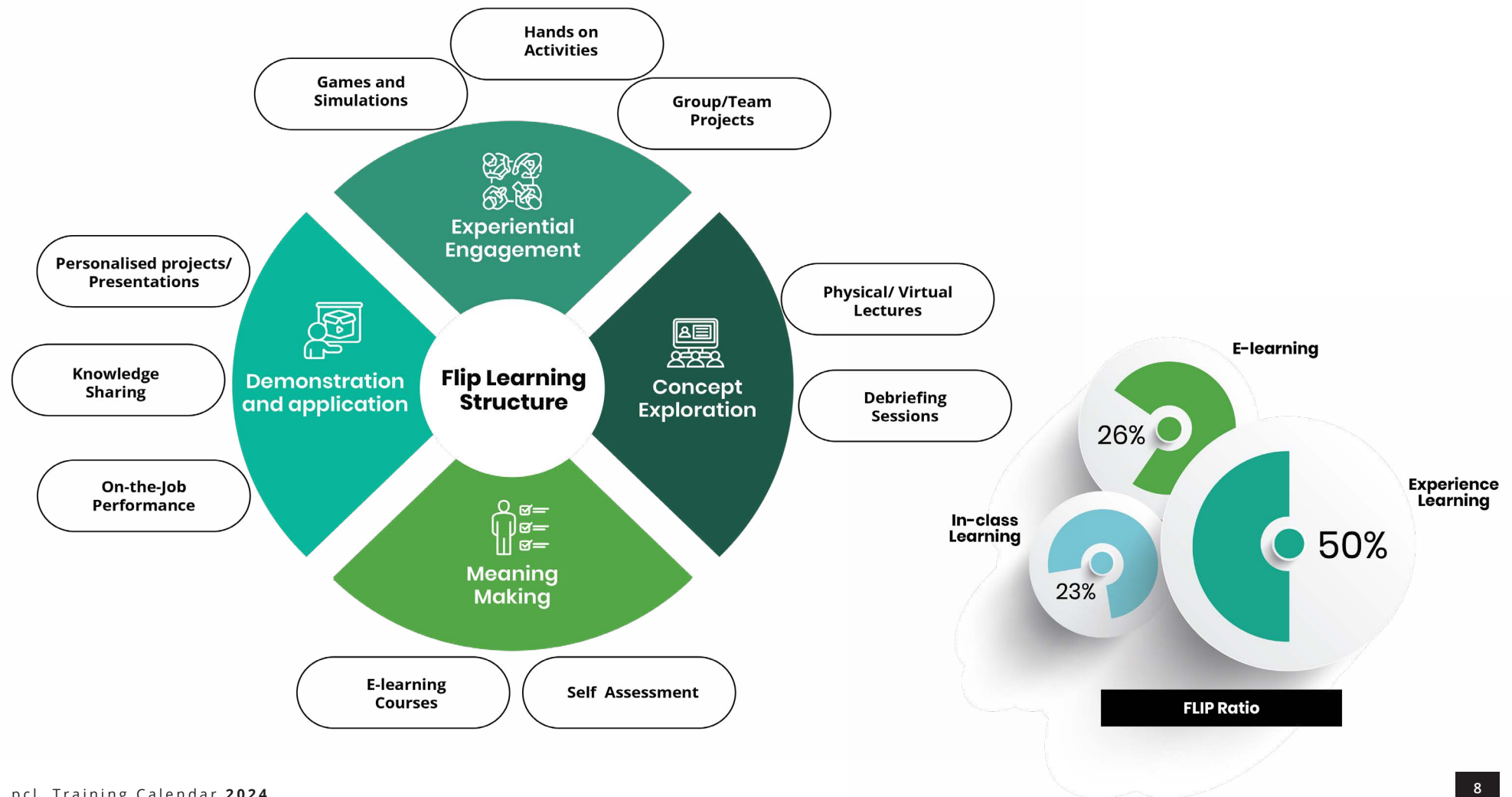
## Improve and Sustain

With an exclusive community set up for lifelong learning

- As the business world evolves, one undeniable truth remains: for any organisation to thrive, it must have a workforce of adept individuals exhibiting the appropriate behaviour and mindset.
- At pcl., we approach learning using our five-step methodology to ensure a comprehensive and immersive experience. These steps are meticulously designed to foster a deep understanding, critical thinking, and practical application of the subject matter.
- Phillips Consulting is committed to a purpose-driven learning approach that guarantees immersive and value-driven training. This approach integrates a diverse range of simulation exercises and engaging activities specifically tailored for adult learners, ensuring optimal retention of knowledge and skills.



**Our Flipped learning Methodology has been proven to create an immersive learning experience, improve subject mastery, and boost participants' performance.**



# Learning on the Metaverse



- Pcl. is pioneering a transformative learning approach by integrating immersive training within the metaverse. This innovative method redefines our training delivery, providing participants with dynamic, hands-on learning experiences that surpass conventional methods.
- Our immersive programmes in the metaverse mark a substantial stride in our dedication to delivering state-of-the-art, impactful learning experiences.
- By harnessing this learning methodology, we aim to empower participants with the skills, knowledge, and learning practicality essential for success in the constantly evolving business world.

# Learning and Leisure.

Learning does not always have to be just formal! Learning can be fun and a great way to relax, socialize and network. pcl. introduces at the end of each training week, its outdoor learning with leisure activities.

Here are some of the fantastic recreational & relaxation activities, we have planned out just for you!



- Volleyball
- Beach Soccer
- Bowling
- Table Tennis

- Golf
- Paintballing
- Go Kart Riding



- Speed Boat Cruises
- Art Galleries

- Paint and sip
- Karaoke
- Canopy walk

We are certain you will have an exquisite learning experience



# Course Highlights

---



# Course Highlights – 1/4

**Understanding Self and Human Behaviour + The Thomas Personal Profile Analysis (PPA)**

**2 days**

21-22 February  
25-26 April  
5-6 June  
5-6 September

**N300,000** (Exclusive of VAT)

**Women in Leadership: Mastering Key Leadership Competencies**

**3 days**

20-22 March  
18-20 June  
17-19 September

**N280,000** (Exclusive of VAT)

**Leadership Agility & Adaptability Masterclass**

**1 day**

13 March  
16 May  
21 August  
18 November

**N120,000** (Exclusive of VAT)

**Leading in a Multigenerational Environment**

**2 days**

27-28 Feb  
16-17 May  
16-17 August  
5-6 November

**N245,000** (Exclusive of VAT)

**Public Speaking and Presentation Skills (VR/Simulation)**

**4 days**

6-9 May  
19-23 August

**N350,000** (Exclusive of VAT)

**Leadership Communication (VR/Simulation)**

**3 days**

4-6 June  
7-9 August

**N350,000** (Exclusive of VAT)

**Personal Branding Masterclass**

**2 days**

16-17 January  
20-21 June  
7-8 August

**N220,750** (Exclusive of VAT)

**Business Essentials for Entrepreneurs**

**3 days**

18-21 March  
20-22 August

**N220,000** (Exclusive of VAT)

# Course Highlights – 2/4

**Business Performance Reporting: balanced Scorecard & Analytics for Business**

**2 days**

29-30 April  
20-21 June  
7-8 August

**N224,250** (Exclusive of VAT)

**Corporate Governance and Ethics**

**2 days**

14-15 March  
10-11 July

**N230,250** (Exclusive of VAT)

**Intermediate Microsoft Excel**

**3 days**

4-6 March  
26-28 August

**N228,562** (Exclusive of VAT)

**Data Analytics, Business Intelligence & Visualization with Power BI**

**4 days**

22-25 January  
6-9 May  
12-15 August

**N250,000** (Exclusive of VAT)

**Secure Software Development And Certified Software Security Lifecycle Professional Certification( CSSLP)**

**5 days**

22-25 April  
17-21 June

**N350,000** (Exclusive of VAT)

**IT Auditing & Fraud Detection**

**3 days**

13-15 May  
26-28 August

**N270,000** (Exclusive of VAT)

**Microsoft SharePoint Online**

**5 days**

15 -19 April  
1 -5 July  
7-11 October

**N400,000** (Exclusive of VAT)

**ISO 31000 Risk Management**

**4 days**

15-18 April  
17-20 June

**N350,000** (Exclusive of VAT)



## Course Highlights – 3/4

### Payment Card Industry Data Security Standard (PCI DSS)

5 days

18-22 March  
12-16th August

**N400,000** (Exclusive of VAT)

### Certified Data Protection Officer

5 days

5-8 February  
2-5 April

**N350,000** (Exclusive of VAT)

### ISO 55000 Asset Management

5 days

22-26 April  
17-21 June

**N385,000** (Exclusive of VAT)

### Capability Maturity Model Integration for Development (CMMI-DEV)

5 days

4-8 March  
17-21 June

**N350,000** (Exclusive of VAT)

### ISO 50001 Energy Management Lead Implementer

5 days

18-22 March  
8-12 July

**N385,000** (Exclusive of VAT)

### Certified Scrum Master

2 days

2-3 May  
1-2 July

**N245,000** (Exclusive of VAT)

### Lean Six Sigma Yellow Belt

5 days

4-8 March  
1-5 July

**N350,000** (Exclusive of VAT)

### ITILv4 Foundation

3 days

4-6 March  
24-26 June

**N800,000** (Exclusive of VAT)

# Course Highlights – 4/4

## Certified Business Analysis Professional (CBAP)

4 days

22-25 January  
4-7 March

**N368,000** (Exclusive of VAT)

## AIPMM Product Management

5 days

4-8 March  
24-28 June

**N375,000** (Exclusive of VAT)

## PMI-ACP

3 days

6-8 April  
17-19 June

**N350,000** (Exclusive of VAT)

## Microsoft Power Apps

5 days

11-15 March  
6-10 May

**N450,000** (Exclusive of VAT)

## APMG-International Change Management™ Foundation & Practitioner

5 days

4-8 March  
3-7 June

**N350,000** (Exclusive of VAT)

## Certified Hacking Forensic Investigator (CHFI)

5 days

18-22 March  
1-5 July

**N385,000** (Exclusive of VAT)

## TOGAF 10 Enterprise Architecture

3 days

5-7 February  
24-26 May

**N450,000** (Exclusive of VAT)

## Penetration Testing

5 days

5-9 February  
20-24 May

**N365,000** (Exclusive of VAT)

# International Course Highlights

---





# Mastering Disruptive Digital Leadership & Strategic Corporate Governance Programme .

Boards, Chief Executives, and Investors amongst charting courses through uncharted territory, rapid change, and soaring expectations, are now expected to have a certain understanding of technologies.

This is as a result of today's business world is marked by disruption, digital transformation, and VUCA (Volatility, Uncertainty, Complexity, Ambiguity).

To succeed, embracing the right technology is paramount, as technology is the catalyst for financial growth and innovation.

This programme delves into key top management concerns, including attracting and retaining top talent, developing the next generation of leaders, maintaining an engaging workforce, digital transformation, global economic shifts, product innovation, outperforming key competitors, navigating uncertainty, competitive advantage, and technology adoption.

## International Run

**Date: 18-22 November**

**Location: United Kingdom**

**Training fee: \$6750**

**Local Run training date: 14-18th October**

**Location: Ibom Icon Hotel & Golf Hotel, Uyo.**

**Training fee: N1,800,000**



**Discount Applies for bulk nominations**

## What delegates will gain from our Mastering Disruptive Digital Leadership & Strategic Corporate Governance Program:

- The strategic significance of innovation and digital transformation
- Shifting from reactive to proactive strategies
- Identifying technology risks, vulnerabilities, and opportunities
- Balancing risk and reward in disruptive innovation
- Introducing disruptive innovation as a business process
- Succeeding with emerging technologies, driving new product innovations
- Navigating uncertainty
- Leading discussions on technology's impact on business trajectory
- Proactive risk mitigation

Schedule

**14-18 October 2024 (Open Session)**

Please contact us for in-plant session



**Instructor-Led**



**5 days**

# Creative Leadership Strategies for the Future of Work Programme

As global events and technological advancements have combined to reshape our lives and work successfully, leading a company into the future necessitates more than a strategic plan. The increasing complexity requires leaders to evolve in lockstep with the world of work and the war on talent, as what was once considered core leadership skills for the workplace are fast becoming obsolete.

We have partnered with the Intellectual Forum: Jesus College in the University of Cambridge to deliver the Creative Leadership Strategies for the Future of Work, a four-day executive leadership program designed to equip business leaders and executives from various industries and sectors with the tools and frameworks needed to navigate change in all aspects of the workplace and to provide them with an immersive learning experience.

**Date: 10-13 June 2024**  
**18-21 November 2024**  
**Location: United Kingdom**  
**Training fee: \$10,000**



**Discount Applies for bulk nominations**

## What delegates will gain from our Creative Leadership Strategies for the Future of Work Program:

- Access to international best practices and insights on navigating the workplace.
- Discover how to use technology-driven and human-centred models to reimagine the future of work.
- Gain a thorough understanding of the trends influencing the future of work..
- Learn business transformation strategies to create a personal blueprint for a future-focused workplace.
- Connect with a diverse international group and expand your professional network.
- Gain access to the world-class faculty at Jesus College in the University of Cambridge and Phillips Consulting's cutting-edge thinking and insights.
- Certificate from the Intellectual Forum – Jesus College in the University of Cambridge.



**Instructor-Led**



**Certification  
Awarded**



**5 days**

# The Global Executive Leadership Masterclass, Phillips Consulting & Howard University School of Business, Washington DC, USA.

Today's disrupted business world demands next-level global leaders committed to stepping up, reimagining the future, and delivering excellence.

The New Global Executive Leadership Masterclass is designed to provide executives worldwide with a transformational 5-day integrated executive experience to reimagine their approach to leadership, study emerging global business models, and create a new pathway for next-level impact.

The learning interventions will dovetail to the advanced mastery of core competencies of leading, strategising and performance management tools, which will instigate viable decisions to drive initiatives forward and accelerate positive impacts in organisations.

This program will be delivered by a world-class faculty and executive instructional team from the Howard University School of Business and Phillips Consulting, two of the world's leaders in executive development and corporate education.

**Date: 24-28 June 2024**  
**25-29 November 2024**

**Location: U.S.A**  
**Training fee: \$6750**



**Discount Applies for bulk nominations**

## What delegates will gain from "The Global Executive Leadership Masterclass"

- Access to the latest research, industry insights, and best practices curated by distinguished faculty members and industry experts.
- Certificate from the Howard University School of Business
- Gain valuable insights and perspectives that will contribute to their long-term success as leaders.
- Opportunity to network with a diverse cohort of high-level executives from various industries and regions.
- Insights into the nuances of conducting business on a global scale, allowing you to navigate the complexities of international markets confidently.
- Exclusive alumni network, providing ongoing opportunities for learning, collaboration, and professional development.



**Instructor-Led**



**One week**

# The Advanced Organizational Resilience Programme

Organizations at all scales and in all sectors face growing risk and organizational resilience challenges like never before. An ever-growing number of challenges, compounded by the speed of technological change, climate change, cyber threats and evolution all act together to increase these challenges.

Building Organizational Resilience provides business leaders with a practical approach to assess and build organizational resiliency.

This programme provides cutting-edge strategies to fortify your organization against disruptions and uncertainties, ensuring its continued growth and success. Our distinguished faculty of industry experts will guide you through a transformative journey, equipping you with the insights, tools, and leadership prowess to foster resilience, drive innovation, and seize opportunities in any scenario.

## International Run

**Date: 8-12 July**

**Location: DC, USA**

**Training fee: \$6750**

**Local Run training date: 5-9 August**

**Location: Whispering Palms, Lagos State**

**Training fee: N1,750,000**



**Discount Applies for bulk nominations**

## What delegates will gain from our The Advanced Organizational Resilience Programme:

- Knowledge within strategic areas of resilience and business continuity
- The ability to communicate fluently across functional boundaries
- Credibility within the resilience profession
- Effective action-based outcomes to advance organizational strategies
- The ability to network across sectors to gain transdisciplinary knowledge

Schedule

**5-9 August 2024 (Open Session)**

Please contact us for in-plant session



**Instructor-Led**



**5 days**



# The Leading Digital Transformation Strategy Executive Programme

To thrive while facing disruption at every turn, leaders must reinvent their companies again and again. Digital transformation strategies are no longer nice-to-have, they are required.

Digital transformation isn't solely reliant on adopting new technologies. It demands new ways of thinking about how business is done, who the work is done by, and the customer experience attached to it.

In this programme delegates will gain the skills to develop and implement a digital strategy within your organisation. Drawing on insights from pcl. Business faculty, industry leaders, case studies, and your peers, delegates will develop a robust understanding of digital cultures, foundations, and frameworks to craft their own transformational strategy.

## International Run

**Date: 18-22 November**

**Location: DC, USA**

**Training fee: \$6750**

## Local Run training date: 24-28 June

**Location: Obudu Mountain Resort, Obudu, Cross River**

**Training fee: N1,750,000**



**Discount Applies for bulk nominations**

## What delegates will gain from our The Leading Digital Transformation Strategy Executive Program

- Explore digital disruption from the perspectives of strategy, organization, and leadership for the long term
- Strengthen your skills as a visionary leader by learning how to spot digital opportunities, develop strategies around them, and pitch them persuasively to key stakeholders
- Shift your mindset from traditional thinking on product- or service-based value creation and competition to a platform and ecosystem perspective, and understand the new set of strategic choices and tradeoffs they represent
- Deepen classroom learning and begin reimagining your business through daily faculty-led integration sessions

### Schedule

**24-28 June 2024 (Open Session)**

Please contact us for in-plant session



**Instructor-Led**



**5 days**

# Harnessing AI for Breakthrough Innovation and Strategic Impact Program

AI is quickly becoming a critical tool in every industry. As artificial intelligence (AI) continues to improve, it's quickly becoming a part of everyday life, affecting much of what people do and how they interact as well as how businesses operate.

Harnessing AI for Breakthrough Innovation and Strategic Impact delivers a curriculum unlike any other — created and taught by renowned faculty. In this programme delegates will acquire a variety of viewpoints and ideas from top experts in artificial intelligence, strategy, innovation, technology, ethics, and other fields.

The curriculum has been carefully crafted to integrate corporate objectives and possibilities with technology, real-world applications, and possible outcomes.

---

## International Run

**Date:** 13-17 November

**Location:** South Africa

**Training fee:** \$6750

**Local Run training date:** 1-5 July

**Location:** Ikogosi Warm Springs Resort

**Training fee:** N1,950,000



**Discount Applies for bulk nominations**

## What delegates will gain from our Harnessing AI for Breakthrough Innovation and Strategic Impact Program

- Gain a high-level understanding of key AI technologies and their applications.
- Understand how Machine Learning translates data into models that can make inferences.
- Discover best practices on how companies are currently using AI with case studies and industry guest speakers.
- Use design thinking methodology to develop potential AI applications for your organization that are strategically aligned with your business goals.

---

Schedule

**1-5 July 2024 (Open Session)**

Please contact us for in-plant session



**Instructor-Led**



**5 days**

# Global Business Leadership, Terry School of Business, University of Georgia

As the workplace evolves, it is essential that leaders can adapt to the new demands and challenges. However, being a leader can be challenging with constantly evolving demands and the need to stay up-to-date with the latest skills and knowledge.

This program aims to help individuals transition from individual contributors to influential leaders by focusing on the processes and principles defining leadership excellence.

After completing the program, participants will have the skills and confidence to lead and motivate others, influence stakeholders, leverage resources, and enhance business processes to achieve strategic goals.

This program includes self-assessments, case studies, peer-to-peer learning, and action plans that can improve individual and team performance and be implemented immediately.

**Date 17-21 June 2024**  
**2-6 September 2024**

**Location: U.S.A**

**Training fee: \$6750**



**Discount Applies for bulk nominations**

## What delegates will gain from “Global Business Leadership”

- Access to the latest research, industry insights, and best practices curated by distinguished faculty members and industry experts
- Certificate from the Terry School of Business, University of Georgia
- Opportunity to network with a diverse cohort of high-level executives from various industries and regions.
- Learn from experienced faculty members who have expertise in global business practices.
- Acquire skills necessary for effective leadership
- Gain valuable insights and perspectives that will contribute to their long-term success as leaders.
- Exclusive alumni network, providing ongoing opportunities for learning, collaboration, and professional development.



**Instructor-Led**



**One week**

# The IT Executive Leadership Program

Our Leadership and Executive Management portfolio provides frameworks for senior executives within the Executive Management category, and programs for all leaders in the Leadership category.

This program is designed to help senior executives manage disruptive forces which have accelerated organizations innovate and operate. Participants will explore the different leadership styles and when they should be used to maximize the performance of others.

Throughout the course, Executives will learn about best practices for IT Leadership and Management, including how to develop an IT Strategy that aligns with business objectives, how to manage IT investments, and how to build and manage high performance teams.

---

## International Run

**Date: 13-17 November**

**Location: DC, USA**

**Training fee: \$6750**

**Local Run training date: 12-16 August**

**Location: Lakowe Lake Resort, Lagos**

**Training fee: N1,800,000**



**Discount Applies for bulk nominations**

## What delegates will gain from our IT Executive Leadership Program:

- Develop a deep understanding of emerging technologies, including artificial intelligence, blockchain, cloud computing, and the Internet of Things (IoT).
- Gain an in-depth knowledge of best practices for managing complex IT projects and programs, including project management methodologies, risk management, and change management.
- Enhance strategic thinking skills by exploring IT trends and opportunities to develop innovative strategies that align with the organization's overall business goals.
- Develop an understanding of cybersecurity threats and ways to mitigate risks through secure IT practices and effective governance.

---

Schedule

**12-16 August 2024 (Open Session)**

Please contact us for in-plant session



**Instructor-Led**



**5 days**



# In-House Certification Courses

---



# Certified Knowledge Manager

The highly acclaimed Knowledge Management (KM) Institute CKM program is KM Institute's flagship course, delivered in up to 15 countries yearly, with thousands Certified since 2001.

The KM Institute in conjunction with Phillips Consulting brings this CKM program to Nigeria. Douglas Weidner is one of the only few pioneering KM practitioners since KM's earliest days. He developed the internally acclaimed Certified Knowledge Manager certification programs and forms part of the Phillips Consulting faculty on this course.

---

**Cost - \$2,940.00 per participant**



**Discount Applies for bulk nominations**

## What delegates will gain from our Certified Knowledge Manager Course:

- Perform KM using proven tips/tools anyone can use!
- Build Collaborative Environments, better communication, spark innovation
- Transform your organization into a rapid- learning environment
- Develop innovative ways to motivate your staff with quick wins
- Create the KM Vision for your company, including a solid strategy to get there
- Initiate with your peers successful Communities of Practice
- Discover usable, real-world KM principles and keys to success

---

Schedule  
Please contact us for in-plant session



**Instructor-Led**



**CKM Certification  
Awarded**



**5 days**

# Certified Learning Facilitator

The CLF certification course is designed to equip participants with the knowledge and skills required to go through the examination process and earn the credence of Certified Learning Facilitator.

It will use a combination of practical sessions, audio-visual learning materials, simulations and lectures to produce exceptional talent and resources in the area of training and facilitation.

The certification exam will hold at different times during the year and all participants qualify to sit for the certification at the end of the training program. This could be immediately at the completion of the training class or at a later communicated date.

---

**Cost – \$500 per participant**



**Discount Applies for bulk nominations**

## What delegates will gain from our Certified Knowledge Manager Course

- Learn the principles of training design and facilitation – both physical and virtual.
- Learn the process of user-centred instructional design.
- Learn the art of training large diverse numbers without compromising quality especially in virtual classrooms.
- Explore methods to help to master tone, facilitate exercises, hone speaking skills, and establish a safe, engaging learning environment for participants.
- Acquire learning transfer strategies for embedding the training into the participants' daily work routines.

---

Please contact us for in-plant session



**Instructor-Led**



**CLF Certification  
Awarded**



**5 days**

# Managerial Assessment Of Proficiency (MAP)

MAP (Managerial Assessment of Proficiency) is one of the most widely acclaimed and respected management assessment and skill building programs in the world! This is a proven tool for pinpointing and charting strengths and weaknesses, as compared to norms developed from over 80,000 managers and supervisors. MAP is the tool for identifying managerial strengths and developmental needs.

The program objectively measures an individual's competency level in 12 key managerial areas:

- Offers a comprehensive and integrated 5-step program including: - Assessment, Interpretation, Planning, Development; and Reassessment.
- Covers three styles and values that influence an individual's effectiveness in using the 12 competencies.
- Gives the supervisor or manager personalized feedback on strengths and deficiencies.
- Guides each supervisor or manager through the Individual Development Plan (IDP) process.

---

**Cost for two (2) days assessment Only**  
**- N300,000 per participant.**



**Discount Applies for bulk nominations**

## What delegates will gain from our MAP Course

- Identify their managerial strengths and areas that require improvement.
- Tie their weaknesses to operational efficiencies, organizational support, and skill development amongst others.
- Identify your management and communication style and its applicability to your team or organization.
- Build a clear personal action plan towards closing identified gaps.

---

Please contact us for in-house session



**Instructor-Led**



**MAP Certification  
Awarded**



**5 days**



# Instructor / Virtual Led Courses

---



# Instructor / Virtual Led Courses

At pcl. (Phillips Consulting Limited), we take immense pride in our innovative and dynamic approach to learning. We have structured the calendar to offer flexibility and accessibility, with training sessions available in both instructor-led and virtual formats. This approach ensures that all participants, regardless of location or scheduling constraints, can participate and benefit from our programs.



## **Instructor-Led Training (ILT) Sessions:**

Our Instructor-Led training (ILT) sessions are designed to provide interactive and hands-on learning experiences to our participants. These sessions are led by seasoned experts in their respective fields who bring extensive industry knowledge and practical insights. These sessions are in person and take place at our designated training facilities, providing participants from various locations with the opportunity to meet and engage in an immersive and engaging learning experience.



## **Virtual Instructor-Led Training (VILT) Sessions:**

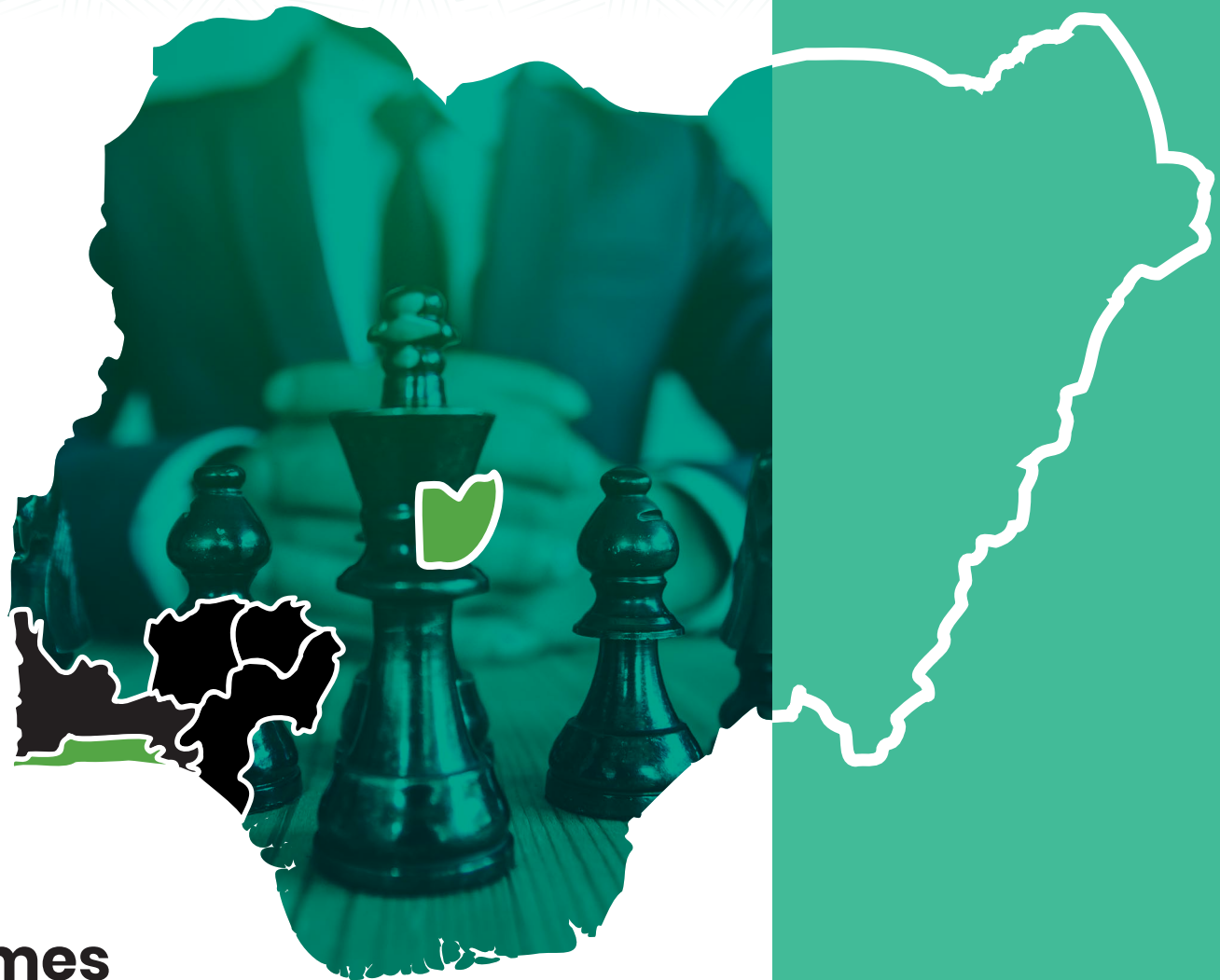
Our Virtual Instructor-Led Training (VILT) sessions provide you with the opportunity to receive professional training from the comfort of your desktop, laptop, or mobile device. We understand the importance of convenience and accessibility, and our VILT sessions ensure the same level of quality and engagement as our in-person training sessions. These sessions are delivered through a robust virtual platform that supports live video, chat, and collaborative tools.

Our training calendar has been designed to cater to the diverse needs of our participants. We have curated a range of programs across various domains and skill levels. Each program is carefully designed to align with organisational goals and individual career aspirations. Whether you are seeking to deepen your technical expertise, develop leadership skills or enhance your soft skills, our training calendar offers something for you.

**Should you have any questions or require further information, please do not hesitate to contact the Training Department.  
(pcltraininghub@phillipsconsulting.net)**

# Leadership, Management and Executive Programmes

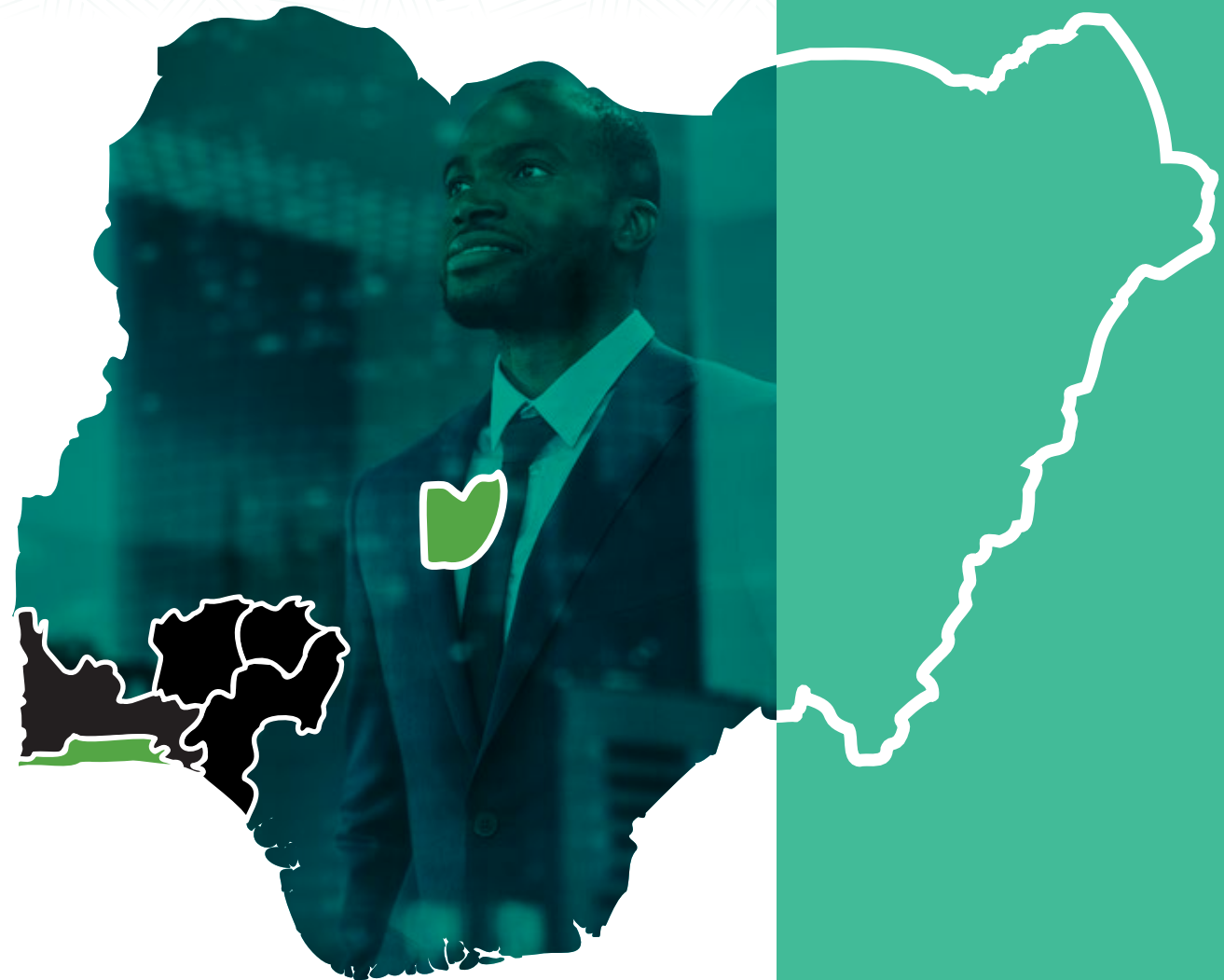
Lagos | Abuja



Courses	No of runs	Duration	Fee(N) Exclusive of VAT		Jan	Feb	Mar	Apr	May	Jun	Jul	Aug	Sep	Oct	Nov	Dec
<b>Leading Self</b>			<b>Physical</b>	<b>Virtual</b>												
Managers Starters Kit	4	3 Days	248,440	211,174.		20-22		15-17			8-10				5-7	
Personal Workplace Effectiveness	4	3 Days	210,000	178,500.			5-7		7-9			6-8		8-10		
Goal Setting, Planning and Decision Making	4	2 Days	200,000	170,000	17-18			17-18			17-18					16-17
Taking on Greater Responsibilities	4	4 Days	251,100	200,000	22-25			8-11			8-11			7-10		
Time Management Essentials	5	1 Day	114,600	80,500	26			5		14			13		14	
Leadership and wellness	3	3 Days	250,000	170,000		20-22					16-18				19-21	
The Resilient Leader	4	3 Days	229,565	170,000			18-20			18-20			18-20			11-13
Networking and Relationship Building Masterclass	4	2 Day	220,000	160,000.		26-27			27-28			26-27			26-27	
Women in Leadership: Mastering Key Leadership Competencies	3	3 Days	280,000	210,000			20-22			18-20			17-19			
<b>Leading Others</b>																
Leading and Motivating High-performing Teams	3	3 Days	229,565	180,000			12-14			19-21			10-12			
Emotional Intelligence Mastery	4	2 Days	213,300	180,000		6-7			6-7			6-7			7-8	
The Act of Giving Feedback	4	1 Day	114,500	80,000		17			6			6		4		
Conflict Management and Resolution	4	1 Day	114,600	80,000.	26			5			5			4		
Developing Leadership Competencies	5	5 Days	352,500	-	15-19			8-12			5-9				11-15	
Building and Developing Productive People	2	3 Days	238,500.	180,000		20-22			6-8			6-8				
Managing Employee Performance for Results	3	3 Days	238,500	180,000			20-22				16-18			16-18		
Leading in a Multigenerational Environment	4	2 Days	245,000	180,000		27-28			16-17			16-17			5-6	
Leadership Agility & Adaptability Masterclass	4	1 Day	120,000	-			13		16			21			18	
Innovation and productivity in the workplace	3	3 days	210,900	-				22-24			1-5			9-11		
The Total Leader	3	5 days	350,500	-			11-15			17-21			16-20			2-6
The Manager as Coach	3	3 days	300,500	240,425				8-10			20-24			7-9		
Understanding Self and Human Behaviour + The Thomas Personal Profile Analysis (PPA)	4	2 days	300,000	-		21-22		25-26		5-6		5-6				



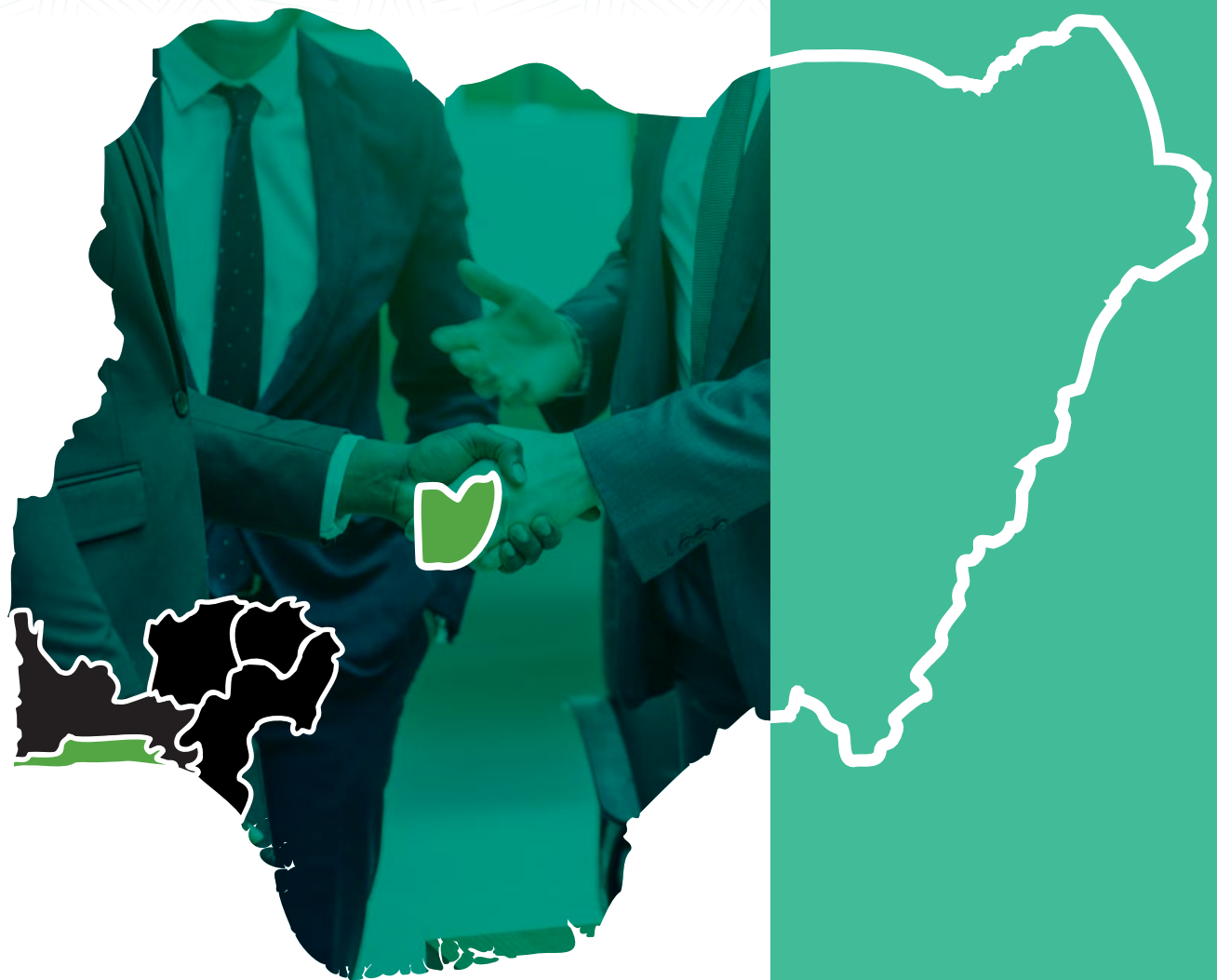
Courses	No of runs	Duration	Fee(N) Exclusive of VAT		Jan	Feb	Mar	Apr	May	Jun	Jul	Aug	Sep	Oct	Nov	Dec
<b>Leading The Organisation</b>			<b>Physical</b>	<b>Virtual</b>												
Advanced Impactful Leadership	3	5 days	366,875.	-			11-15				15-19				4-8	
Mastering the Art of Negotiation	3	2 days	228,900	180,000		15-16			23-24			28-29				
Critical Thinking and Innovative Skills	3	3 days	264,600.	180,000		5-7		6-8					17-19			
Stakeholder Engagement and Mangement	3	2 Days	220,000	160,000			14-15		14-15			14-15				
Finance & Operations Strategy (Driven by Advanced Business Simulation)	1	5 days	1,000,000	-									23-27			
Business Acumen	3	3 days	300,000	-				8-10		4-6				3-4		
Strategic Thinking and Decision-Making Skills	3	3 days	235,500	180,000				8-10			1-3			3-4		
Design Thinking and Innovation	3	2 days	234,000	-			7-8			6-7			9-10			
Business Intelligence and optimization	2	2 days	237,600	-				8-9				5-6				
High-Performance Leadership Programme	3	2 days	240,000	200,000			19-20			25-26				21-22		
Mastering Intelligent Business Thinking	2	3 days	220,500	180,000					15-17			12-14				
Change Management	3	2 days	220,500	180,000		15-16			15-16				9-10			
Leading & Managing Change	3	5 days	300,000	200,000	22-26			8-12			1-5			14-18		
Agile Thinking in a Disruptive Business World	2	4 days	275,000	200,000			5-8			18-21			10-13			
Strategic Leadership and Organisational Culture	3	5 Days	300,000	200,000		5-9		15-19				5-9				
<b>Executive Programmes</b>																
Disruptive Leadership Masterclass		7 days over 2 Months	850,000	<b>The dates for the executive programme are flexible.</b>												
Leadership in the Age of Artificial Intelligence		7 days over 2 Months	800,000													
Agile thinking in a disruptive World		7 days over 2 months	800,000													
Building The Future-Ready Board		7 days over 2 Months	800,000													
Data-Driven Decision-Making and Analytics for Executives		7 days over 2 Months	800,000													
Corporate Governance and Board Effectiveness		7 days over 2 Months	800,000													
Ethical Leadership and Corporate Social Responsibility		7 days over 2 Months	800,000													
Leadership in Sustainable Business Practices		7 days over 2 Months	800,000													



## Business Courses

Lagos | Abuja

Courses	No of runs	Duration	Fee(N) Exclusive of VAT	Jan	Feb	Mar	Apr	May	Jun	Jul	Aug	Sep	Oct	Nov	Dec
<b>Startup/SME Business</b>			<b>Physical</b>												
Business Essentials for Entrepreneurs	2	3 days	220,000			13-15					20-22				
Business Acumen and Strategic Awareness	2	3 days	300,000				22-24			15-17					
Strategic Thinking, Analysis & Business Planning	2	3 days	300,000					20-22					14-16		
Building and Sustaining Long-Term Business Success in Nigeria	2	3 days	350,000				15-17			8-10					
Effective Business Decisions Using Data Analysis	1	3 days	300,000									23-25			
Operational Business Excellence: Leading with a Strategic Edge	2	3 days	235,000						18-20			2-4			
Practical Business Planning Workshop	2	2 days	210,000					16-17			7-8				
Branding for Entrepreneurs	2	3 days	228,565			6-8			13-14						
The Art of Networking and Relationship Mastery	2	2 days	220,000	23-24			9-10			15-17					
Business Planning, Pitching, and Presentation	2	3 days	300,000					14-16						11-13	
Legal Essentials for Startups and Entrepreneurs	2	2 days	250,000						13-14			10-11			
Design Thinking and Innovation for Start-ups:	2	3 days	300,000			13-15							16-18		
Business Model Canvas: A Blueprint for Success	3	3 days	270,000					29-31				24-26			
Market Research and Analysis	2	3 days	270,000						5-7		7-9				



# Business Etiquette Programmes

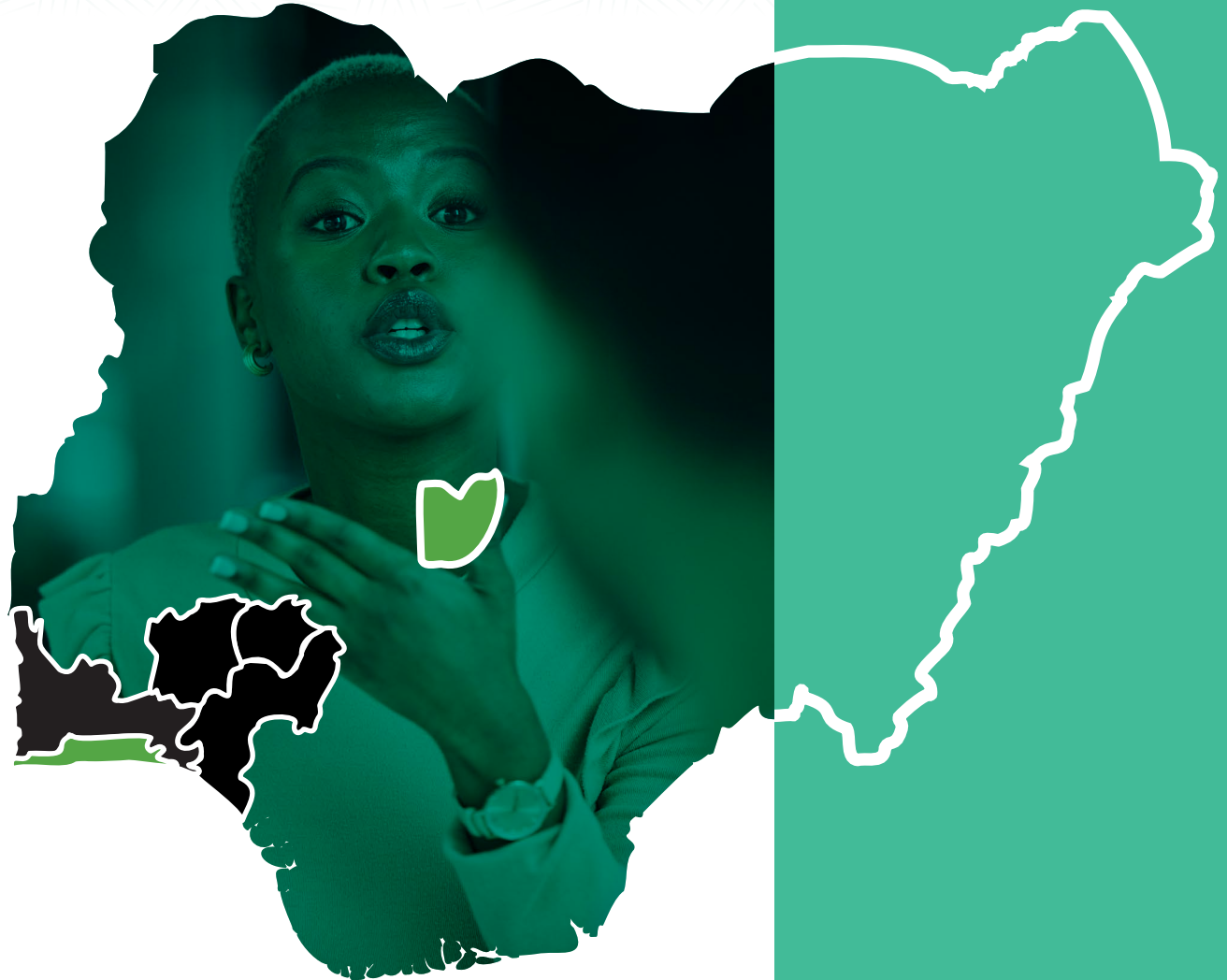
Lagos | Abuja

Courses	No of runs	Duration	Fee(N) Exclusive of VAT	Jan	Feb	Mar	Apr	May	Jun	Jul	Aug	Sep	Oct	Nov	Dec
<b>Business Etiquette</b>			<b>Physical</b>												
Business Etiquette for Professionals	2	2days	220,000			13-14					20-21				
Email and Communication Etiquette	2	1 day	145,000					20					16		
Workplace Civility and Respect	2	1 day	160,000				15			8					
Netiquette: Online Etiquette for the Digital Age	1	2 days	220,000			13-14						23-24			
Networking Etiquette: Building Relationships with Class	2	1 day	180,000						13			4			
Telephone Etiquette: Polite and Professional Phone Skills	2	1 day	110,565			8			14						
Event Etiquette: Navigating Social Gatherings with Poise	3	2 days	200,000	23-24			9-10			15-17					
Social Media Etiquette for Professionals	2	2 days	180,000					14-15						11-12	
Job Interview Etiquette: Making a Lasting Impression	3	2 days	180,000			14-15			13-14			23-24			



# Communication and Branding programmes

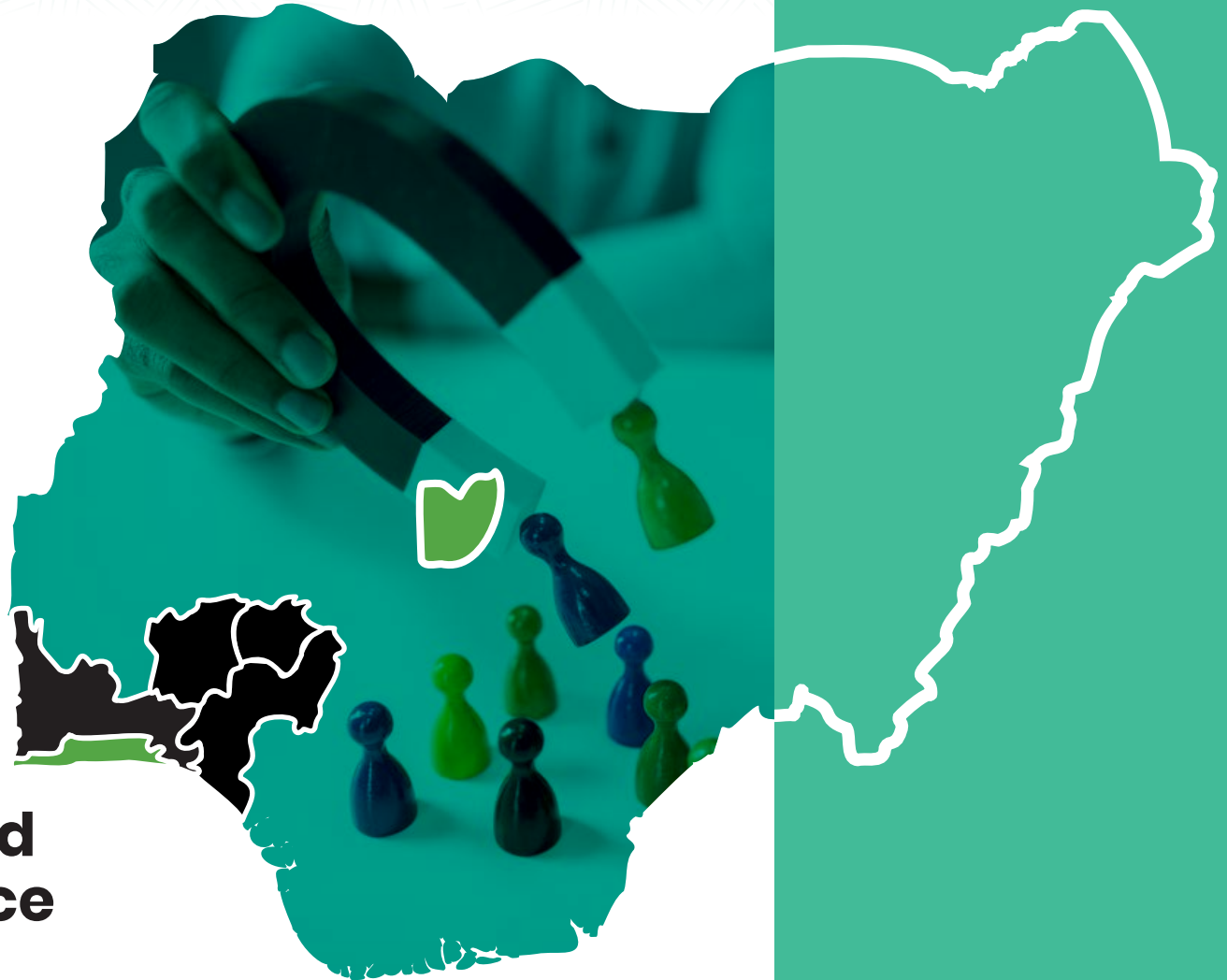
Lagos | Abuja



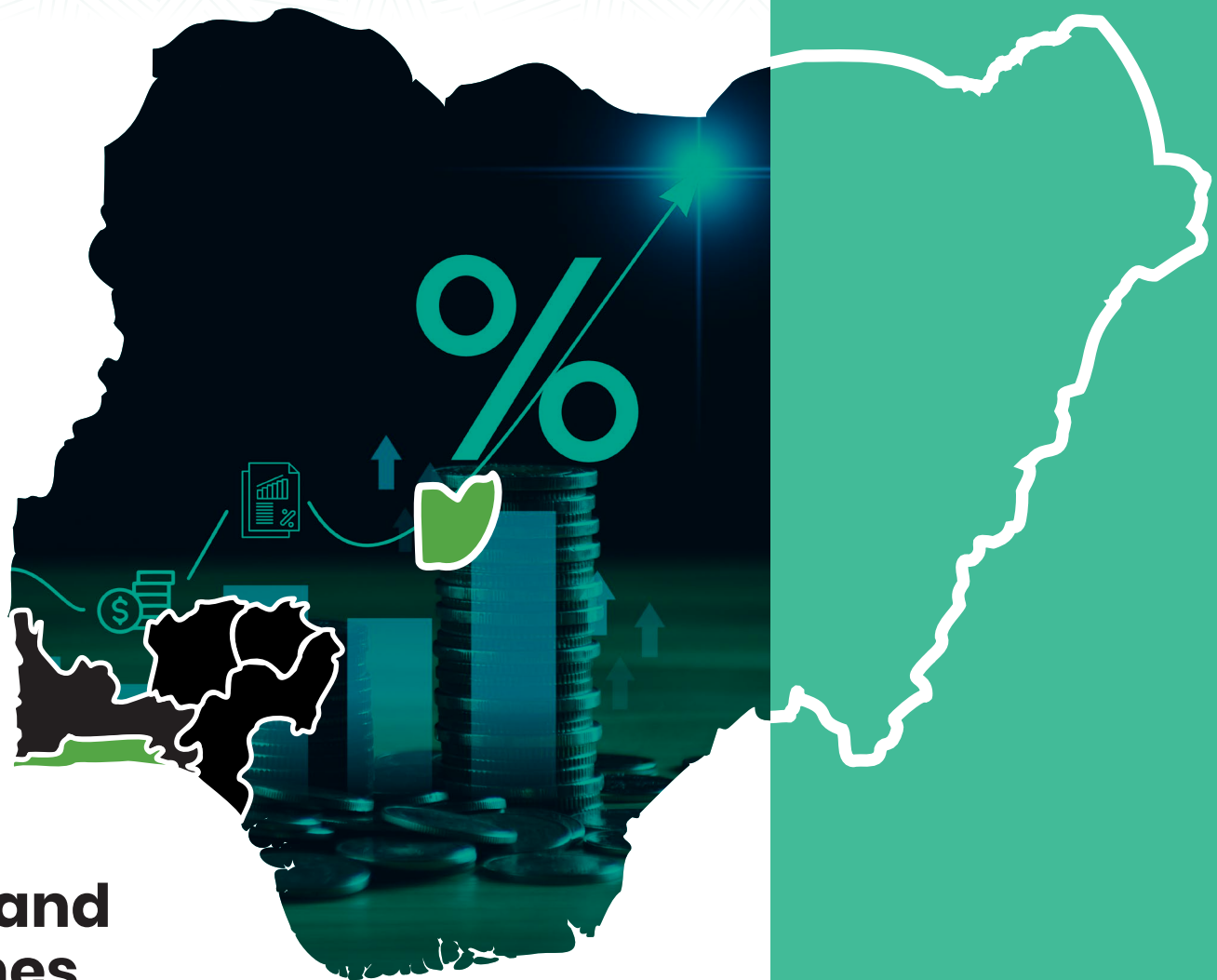
Courses	No of runs	Duration	Fee(N) Exclusive of VAT		Jan	Feb	Mar	Apr	May	Jun	Jul	Aug	Sep	Oct	Nov	Dec
Communication			Physical	Virtual												
Effective Business Writing	4	3 Days	228,570	-	16-18		4-6			3-5			17-19			
Technical Report Writing	3	4 Days	253,000.	-			25-27		28-31				23-26			
Ethical Communication	3	1 Day	114,600	80,000			12			13			10			
Communicating with Assertiveness	3	1 Day	114,600	80,000			18				15				19	
High-Impact Business Communication	3	4 Days	240,640	180,000				15-18		18-20		6-9				
Public Speaking and Presentation Skills	4	3 Days	228,565	-			12-14			19-21			18-20			10-12
Public Speaking and Presentation Skills (VR/Simulation )	2	4 Days	350,000	-					6-9					22-25		
Leadership Communication (VR/Simulation)	2	3 days	350,500	-						4-6		7-9				
English for Business (VR/Simulation)	2	3 days	350,500	-				9-11			3-5					
The Act of Active Listening	4	1 Day	110,000	-		20			20			20			20	
Communication Strategies for Senior Leadership	4	3 Days	245,000	180,000		12-14			14-16		9-11			8-10		
Communicating with Influence and Impact	3	2 Days	210,000	178,500			7-8			13-14			16-17			
Branding																
Branding A-Z	3	3 days	228,565	170,000			4-6		6-8				2-4			
Strategic Brand Management	3	2 days	202,112	171,795			28-29		27-28				16-17			
Corporate Identity & Brand Management	3	4 days	280,000	200,000			12-15			17-20				14-18		
Personal Branding	2	2 days	220,750	160,000	16-17			9-10				7-8				
Consumer Psychology and Branding	2	2 days	210,750	160,000			11-12			20-21		22-23				

# Sales, Marketing and Customer Experience Programmes

Lagos | Abuja



Courses	No of runs	Duration	Fee(N) Exclusive of VAT		Jan	Feb	Mar	Apr	May	Jun	Jul	Aug	Sep	Oct	Nov	Dec
<b>Sales &amp; Marketing</b>			<b>Physical</b>	<b>Virtual</b>												
Digital Marketing	3	3 days	228,560	180,000			12-14				3-5		23-25			
Marketing and Business Development Skills	3	3 days	228,560	180,000				24-26		24-26			23-25			
Planning & Executing Marketing and Sales Strategy	4	3 days	228,560	180,000		27-29			7-9			12-14			5-7	
Consultative Selling Masterclass	2	3 days	230,575	180,000				10-12				14-16				
Strategic Key Account Management	3	4 days	240,000	180,000				9-12			9-12					3-5
Developing & Implementing Strategic Marketing Plans	3	5 days	350,000	-			4-8			17-21				14-18		
The Psychology of Selling	2	3 days	230,575	178,000					1-3				4-6			
The Sales Bootcamp	2	5 days	350,000	-				22-26				26-30				
Sales for non-Sales Professionals	3	3 days	230,000	170,,500			20-22			26-28			25-27			
Sales, Pitch and Closing (VR/Simulation)	2	3 days	350,000	-					22-24					23-25		
Mastering Influence and Negotiation	2	3 days	230,575	180,000			20-22				29-31					
Sales Etiquette	2	2 days	200,000	160,000					7-8			11-13				
<b>Customer Experience Management</b>																
Customer Experience Management	3	2 days	204,420	150,000				11-12		13-14				17-18		
Customer Relationship Management	3	3 days	228,560	-			4-6			3-5			2-4			
Delivering Service Excellence	3	2 days	204,420	150,000				18-19			19-20		5-6			
Contact Center Agent Training	2	2 days	173,360	140,000					16-17			14-15				

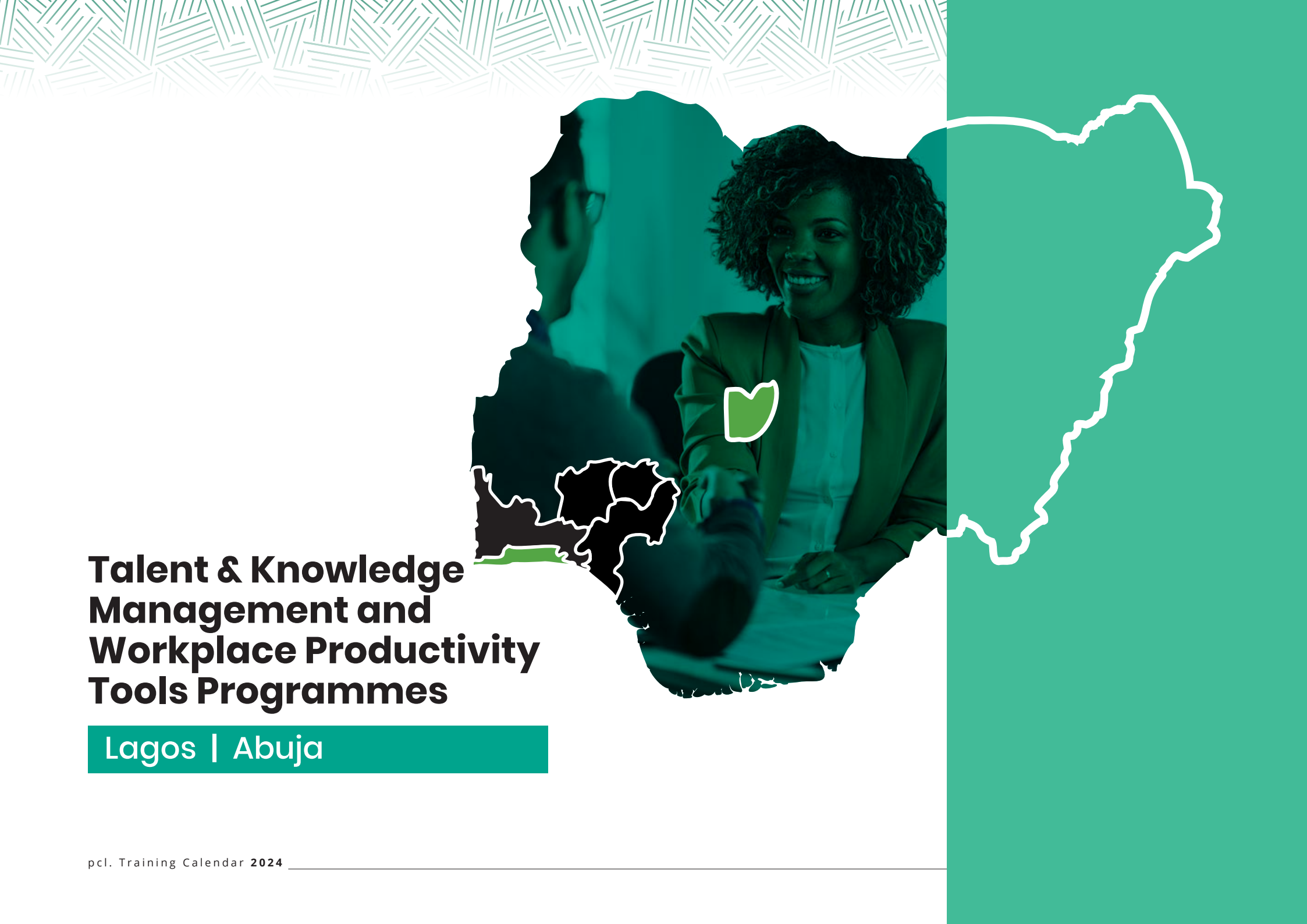


# Finance, Operation and Strategy Programmes

Lagos | Abuja



Courses	No of runs	Dura- tion	Fee(N) Exclusive of VAT	Jan	Feb	Mar	Apr	May	Jun	Jul	Aug	Sep	Oct	Nov	Dec
<b>Finance</b>			<b>Physical</b>												
Basic Financial Modeling	3	3 days	228,560					20-22		15-17		23-25			
Advanced Financial Modeling	3	3 days	240,640			18-20			3-5					13-15	
Financial Management & Credit Analysis	3	2 days	230,000				8-9			1-2			7-8		
Finance and Accounting for Non-Finance Professionals	3	4 days	270,825			11-14			17-19			9-12			
Revenue Forecasting & Financial Analysis	2	5 days	450,750				8-12					14-18			
International Public Sector Accounting Standards (IPSAS)	2	5 days	650,750					13-17			26-30				
Cost optimization, Management & Reporting	2	2 days	224,250			11-12		6-8					7-8		
Business Performance Reporting: balanced Scorecard & Analytics for Business	2	2 days	224,250				29-30		20-21		7-8				
Advanced budgeting and cost management	2	3 days	265,000							1-3				6-8	
<b>Operations Management</b>															
Inventory & Warehouse Management	3	4 days	240,500			18-21			25-28		5-8				
Vendor and Contract Management	3	4 days	240,500					7-10				16-19		18-21	
Strategic Supply Chain & Procurement- Management	3	4 days	240,500				15-18		4-7					25-28	
Facilities Management	3	3 days	210,000				22-24			10-12			21-23		
Purchasing Management Specialist	2	4 days	240,500					13-16				17-20			
Business Process Mapping and Reengineering (BPR)	2	3 days	276,575			18-20					26-28				
<b>Corporate Strategy</b>															
ESG Corporate Governance	2	2 days	228,560					23-24				16-17			
Developing, Executing & Sustaining Strategy for Competitive Advantage	2	3 days	246,600.			13-15						23-25			
Corporate Governance and Ethics	3	2 days	230,250			14-15				10-11				13-14	



# Talent & Knowledge Management and Workplace Productivity Tools Programmes

Lagos | Abuja

Courses	No of runs	Duration	Fee(N) Exclusive of VAT		Jan	Feb	Mar	Apr	May	Jun	Jul	Aug	Sep	Oct	Nov	Dec
<b>Human Capital Management</b>			<b>Physical</b>	<b>Virtual</b>												
Designing and Implementing Compensation and Benefits	2	2 days	200,000	-				25-26						24-25		
HR Metrics & Analytics	4	1 day	120,250	-			11			14			13			2
Designing a Performance Management Framework	3	3 days	228,562	-				9-11				1-2			13-15	
Competency Based Interview Skills	2	3 days	215,920	-					15-17					16-18		
Human Resource Business Partner	3	2 days	192,340	163,500			27-28				10-11			22-23		
The Master Class in HR Strategy	2	4 days	300,000	--			12-15				16-19					
Integrated Talent Management	3	3 days	198,750	168,950					1--3				14-16			11-13
Designing & Implementing Competency Frameworks & Assessment Tools	2	4 days	300,000	-			19-22					6-9				
Introduction to Human Resource	3	2 days	228,562	194,280				11-12			1-2			16-17		
Managing the HR Function	3	4 days	240,640	204,550			12-15				1-4				18-21	
Agile HR Transformation - A to Z of Best Practices	2	4 days	300,000	-						13-15					18-21	
Strategic Performance Management using an Executive Dashboard	2	5 days	350,000	-				8-12			22-26			14-18		
Versatile Performance Management in a VUCA World	2	5 days	350,000	-					13-17				23-27			
Managing the Learning and Development Function	3	2 days	220,250	187,200			5-6			5-6			5-6			
Talent Acquisition: The Total Recruitment Process	2	2 days	245,000.	208,250		28-29			23-24				25-26			
Employee Experience Design	2	2 days	210,000	178,500				11-12			17-18					
<b>Knowledge Management</b>																
Certified Knowledge Manager	1	5 days	\$2,940	-	On Request											
<b>Learning &amp; Instructional Design</b>																
e-Learning Instruction Design & e-Content Development	3	4 days	240,640	-		5-8			6-9						11-14	
Instructor-Led Course Development with Facilitation Techniques	3	5 days	306,475.	-			4-8			17-21				21-25		
Learning and Development Strategies for a High Performing Organisation	3	5 days	400,000			20-23			13-17			26-30				
<b>Workplace Productivity Tools</b>																
Data Visualization - Storytelling with Infographics	2	3 days	220,500	-		5-8				3-5			16-18			
Basic Microsoft Excel	2	2 days	192,340	-			26-27					21-22				
Intermediate Microsoft Excel	2	3 days	228,562	-			4-6					26-28				
Advanced Microsoft Excel with Dashboard	2	4 days	240,640	-				8-11				28-30				
Office Administration and Management	3	3 days	204,420	173,750				29-30		3-5			8-10			

# Microlearning Courses

---

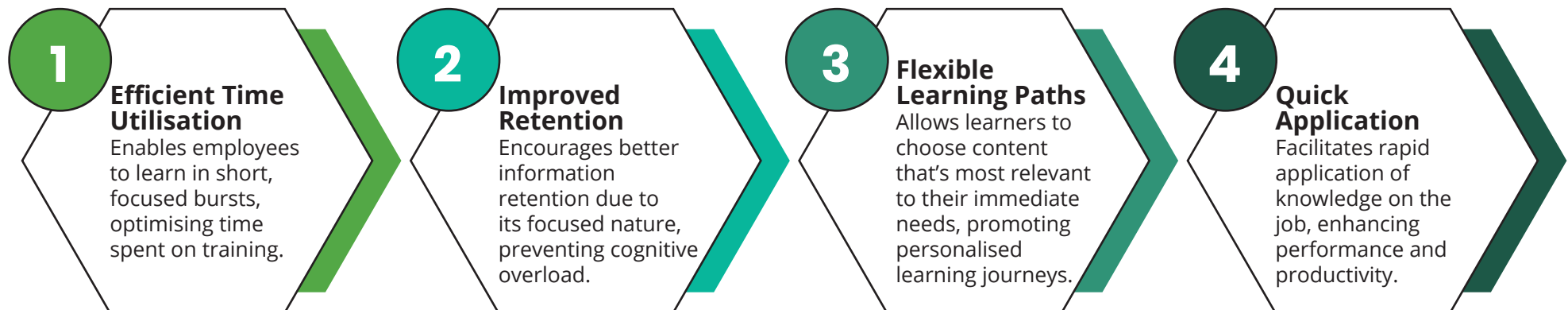


# Pcl. Microlearning Courses

Pcl. Microlearning courses has emerged as a dynamic and effective approach to learning in today's fast-paced world. This innovative method breaks down courses into bite-sized learning nuggets and are designed to address a single learning objective, ensuring maximum retention and application.

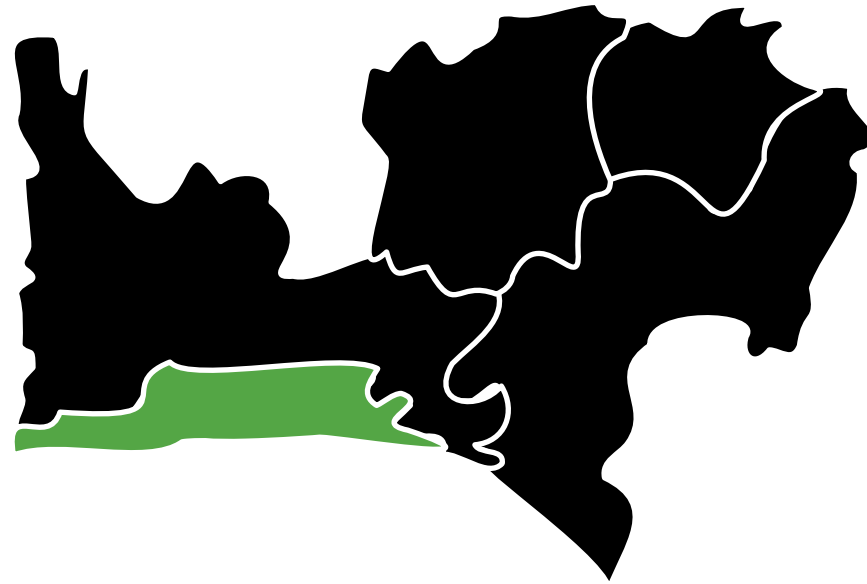
By enrolling your employees to take our microlearning courses, you empower them to learn at their own pace, enhancing their performance and contributing to the overall success of your organisation.

## Benefits of the Pcl. Microlearning



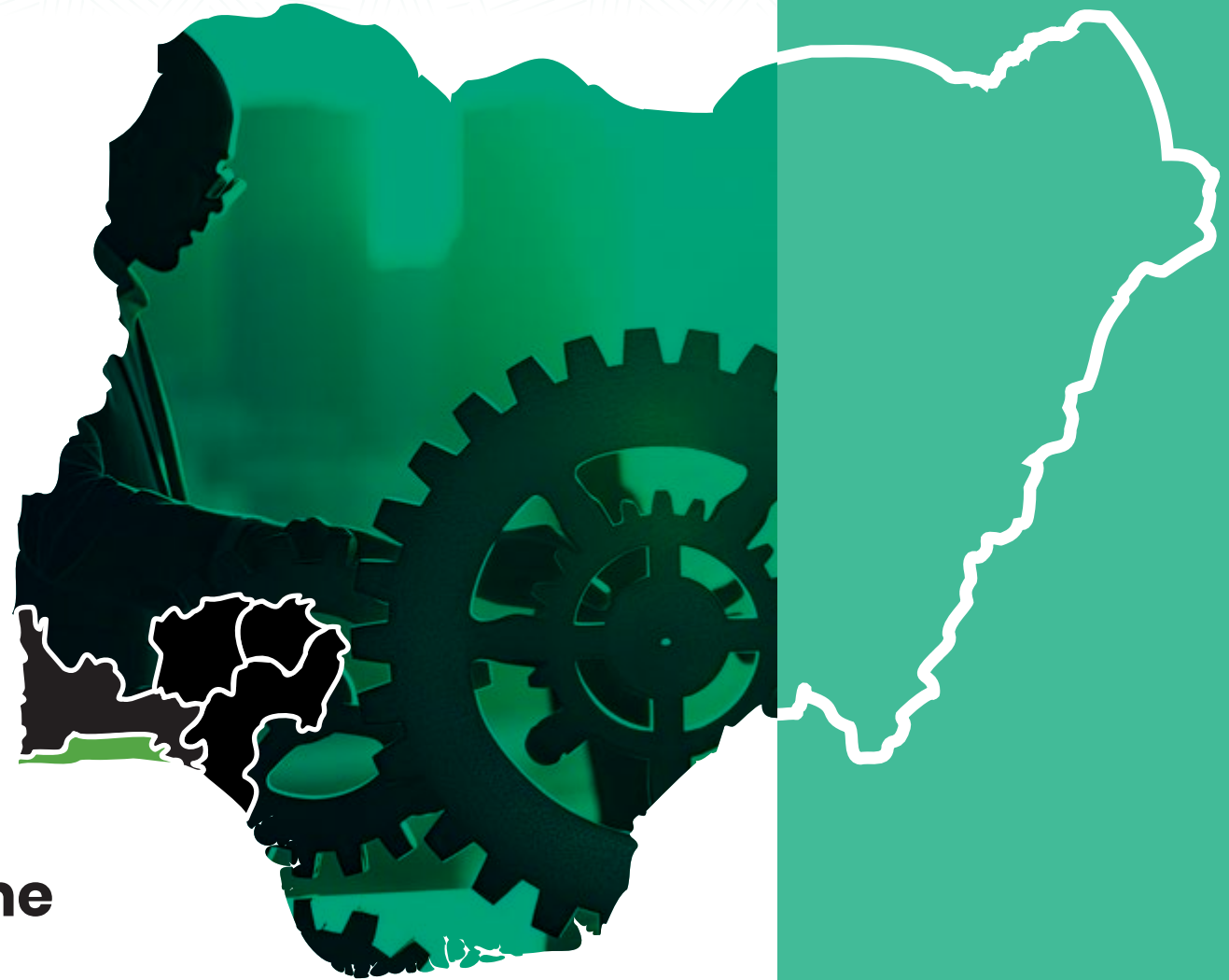


Courses	No of runs	Duration	Fee(N) Exclusive of VAT	Jan	Feb	Mar	Apr	May	Jun	Jul	Aug	Sep	Oct	Nov	Dec
			Virtual												
Time Management	12	2 hours	20,000	Our microlearning program runs seamlessly year-round, offering learners a reliable and easily accessible avenue for ongoing learning and skill development.											
Digital Marketing Basics	12	2 hours	20,000												
Self-Care for Productivity	12	2 hours	15,000												
Emotional Intelligence-Self Awareness	12	2 hours	20,000												
Effective Email Communication	12	2 hours	20,000												
Communicating with Assertiveness	12	2 hours	20,000												
Negotiating for Success	12	2 hours	20,000												
The Act of Listening and Giving Feedback	12	2 hours	20,000												
Developing Personal Accountability	12	2 hours	20,000												
Public Speaking Basics	12	2 hours	20,000												
Building Self-Confidence and Assertiveness	12	2 hours	20,000												
Prospecting and Lead Generation	12	2 hours	20,000												
The Act of Closing Sales deal	12	2 hours	20,000												
Managing Sales Pipeline	12	2 hours	20,000												
Effective Presentation Techniques	12	2 hours	20,000												
Handling Difficult Customers	12	2 hours	20,000												
Building a Growth Mindset	12	2 hours	20,000												
Acing your Interview	12	2 hours	20,000												
Branding Basics	12	2 hours	20,000												
Change Management	12	2 hours	20,000												
Closing the Deal (Sales Skills)	12	2 hours	20,000												
Communicate like a Pro	12	2 hours	20,000												
Developing Emotional Intelligence	12	2 hours	20,000												
Microsoft Excel Quick Fix	12	2 hours	20,000												
Microsoft PowerPoint Sprint	12	2 hours	20,000												
Motivating your Team	12	2 hours	20,000												
Optimising LinkedIn in a Job search	12	2 hours	20,000												
The Writing Clinic	12	2 hours	20,000												
Writing a Business Plan	12	2 hours	20,000												
Writing the Perfect CV	12	2 hours	20,000												



# Technology Courses

**Lagos Centre (Instructor Led Classes)**



# Project & Programme Management



Courses	No of runs	Duration	Fee(N) Exclusive of VAT	Certification fee (\$)	Jan	Feb	Mar	Apr	May	Jun	Jul	Aug	Sep	Oct	Nov	Dec
<b>Project Management</b>																
Effective Project Management with Microsoft Project simulation	5	4	N265,000			12-15		15-18		3-6		5-8		14-17		
Project Management Professional (PMP) Fast Track	6	5	N315,000	\$555	15-19		18-22		6-10		8-12		23-27			2-6
PRINCE2 Foundation and Practitioner (with Exams)	3	5	N1,400,000					15-19			22-26			14-18		
Certified Associate in Project Management	3	5	N350,000	\$400			4-8				1-5				18-22	
PRINCE2 Agile Foundation & Practitioner (with Exams)	4	5	N1,400,000						6-10		8-12		23-27			2-6
Agile Project Management Foundation & Practitioner – APMG	3	5	N350,000	\$950				15-19					9-13		11-15	
Project Analysis Tools & Techniques for Managing Risk & Uncertainty	3	3	N255,000							17-19				2-4		2-4
PMI – Agile Certified Practitioner	3	3	N350,000.	\$555				22-24		17-19				2-4		
Certified Scrum Master (CSM)	3	2	N245,000	\$300					2-3		1-2			2-3		
Establishing & Managing the Project Management Office	2	3	N245,000			5-7						5-7				
Telecommunications Project Management	2	5	N400,000				4-8						9-13			
Auditing Projects, Project Management and Project Risk	2	4	N265,000					15-18			1-4					
Improving Productivity through Quality Enhancement & Cost Reduction	2	5	N300,000				18-22					19-23			18-22	
Advanced Oil & Gas Project Economics, Risk & Decision Analysis	3	5	N355,000					22-26		24-28			9-13			
Lean Six Sigma White Belt	3	3	N350,000					15-17			1-3			7-9		
Lean Six Sigma Yellow Belt	3	5	N450,000				4-8				1-5				4-8	
Lean Six Sigma Green Belt	3	5	N450,000					22-26		24-28			9-13			
Lean Six Sigma Black Belt	3	5	N450,000						6-10			5-9			11-15	
Lean Six Sigma Master Black Belt	3	5	N500,000				11-15			3-7					25-29	

Courses	No of runs	Duration	Fee(N) Exclusive of VAT	Certification fee (\$)	Jan	Feb	Mar	Apr	May	Jun	Jul	Aug	Sep	Oct	Nov	Dec
<b>Programme Management</b>																
Program Management Professional	3	5	N400,000	\$800				15-19				5-9		28-1		
<b>Portfolio and Investment Training</b>																
Portfolio and Investment Management Fundamentals	3	5	N305,000						6-10			5-9			18-22	
Mastering Portfolio Programmes & Projects	3	3	N350,000		15-17				6-8					14-16		
Strategic Portfolio and Resource Management	3	5	N385,000					22-26		24-28			9-13			



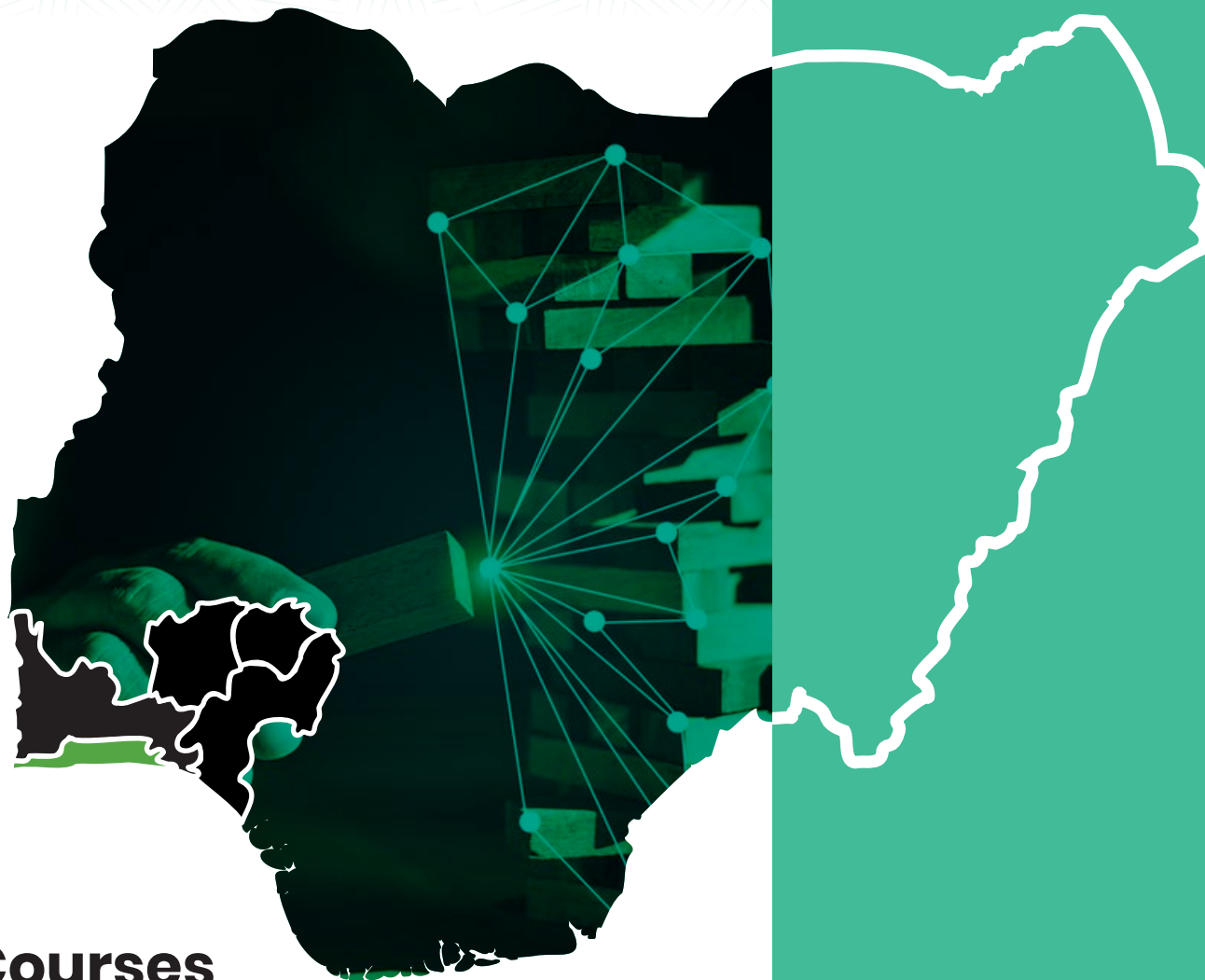
A hand pointing at a digital screen with a network overlay, set against a map of Africa. The map is filled with a teal color and has a white outline. The background of the entire page is a light teal color with a pattern of white lines forming a grid of squares.

## **Business Analysis & Product Management Courses**



Courses	No of runs	Duration	Fee(N) Exclusive of VAT	Certification fee (\$)	Jan	Feb	Mar	Apr	May	Jun	Jul	Aug	Sep	Oct	Nov	Dec
<b>Business Analysis</b>																
Certified Business Analysis Professional (CBAP) Training	5	4	N368,000	\$600	22-25		4-7		13-16			5-8		7-10		
Entry Certificate in Business Analysis™ (ECBA™)	3	2	N298,000	\$500			4-5		13-14			5-7		7-8		
Certification of Capability in Business Analysis™ (CCBA®)	3	3	N325,000	\$550			4-6		13-15			5-8		7-9		
Business Analysis Fundamentals	5	3	N258,000		22-24		4-6		13-15			5-7		7-9		
The Business Intelligence Analyst Course	3	4	N260,000				4-7					5-8		7-10		
Advanced Business Analytics	3	5	N355,000			12-15				24-28			23-27			
Agile Business Analysis	3	3	N270,000		22-24				13-15					7-9		

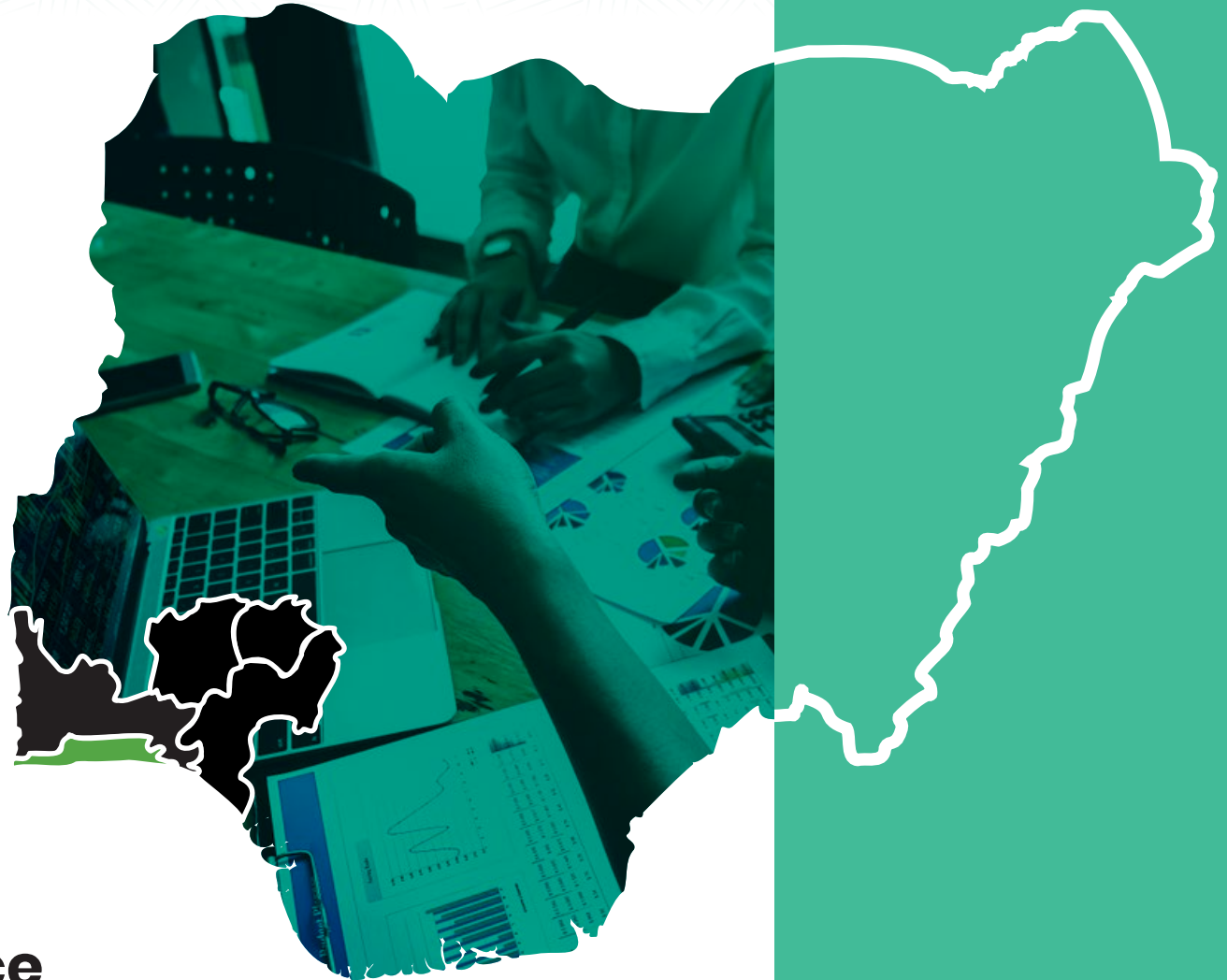
Courses	No of runs	Duration	Fee(N) Exclusive of VAT	Certification fee (\$)	Jan	Feb	Mar	Apr	May	Jun	Jul	Aug	Sep	Oct	Nov	Dec
<b>Product Management</b>																
Product Management Fundamentals- (Transitioning into Product Management)	3	3	N265,000				4-6			24-26			23-25			
The Complete Product Management Course	3	5	N375,000	655			4-8			24-28			23-27			
Scrum Product Owner	3	2	N375,000	500				22-23		3-4					4-5	
Product Ideation, Design & Management	3	4	N275,000		29-1						29-1			2-4		
Digital Product Management	4	5	N300,000			26-1			20-24				23-27		25-29	
Product Marketing	2	5	N275,000				18-22					26-30				
Product Strategy	2	5	N300,000							3-7				28-1		
Product Design	4	4	N285,000			12-16			27-30			19-22				2-5
Advanced Product Management, Leadership and Communication	4	4	N380,000				4-7				8-11		23-26		4-8	
Agile Product Management	3	5	N300,000		29-2			22-26								2-6



## Risk Management Courses



Courses	No of runs	Duration	Fee(N) Exclusive of VAT	Certification fee (\$)	Jan	Feb	Mar	Apr	May	Jun	Jul	Aug	Sep	Oct	Nov	Dec
<b>Risk Management</b>																
APMG-International Change Management™ Foundation & Practitioner	3	5	N350,000	\$630			4-8			3-7			23-27			
PMI-Risk Management Professional	3	5	N350,000	\$555			4-8				22-26				11-15	
Project Risk Management	2	3	N235,000							24-26				2-4		
ISO 31000 Risk Management	3	4	N385,000	\$500				15-18		3-6				14-17		
Risk Management for Asset Managers	3	5	N400,000			5-9			6-10						11-15	



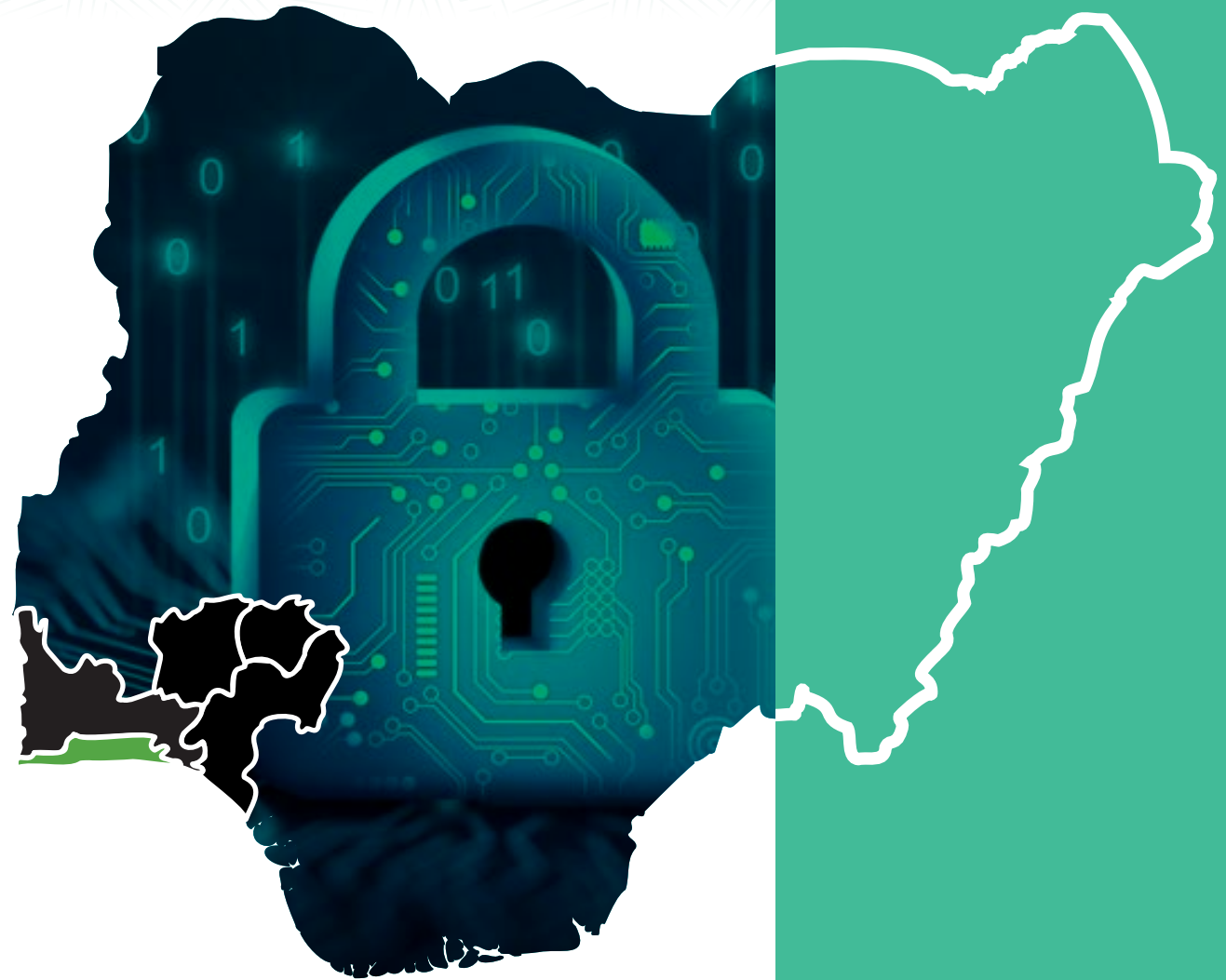
# Data Analytics and Business Intelligence





Courses	No of runs	Duration	Fee(N) Exclusive of VAT	Certification fee (\$)	Jan	Feb	Mar	Apr	May	Jun	Jul	Aug	Sep	Oct	Nov	Dec
<b>Data Analytics and Business Intelligence</b>																
Data Analytics, Business Intelligence & Visualization with Power BI	5	4	N305,000		22-25				6-9			12-15		7-10	11-14	
Data & Business Analytics Fundamentals using Excel	3	4	N275,000					15-18			1-4					2-5
Data & Business Analytics for Managers	3	3	N355,000			5-7					1-3			21-23		
Big Data Analytics with Microsoft R	3	5	N365,000				4-8			24-27					11-15	
Applied Data Science with Python Specialization	3	5	N350,000				18-22			24-28			9-13			
Data Warehousing for Business Intelligence	3	5	N300,000						6-10			12-16			25-29	
SQL Programming	3	4	N300,000					15-18		24-27			2-5			
Introduction to Python Programming	3	3	N285,000			5-7			20-22			19-21				
Power BI for Excel Users	2	3	N295,000				4-6				15-17					
Power BI Advanced Analytics with R	2	3	N300,000					1-3		3-5						
Intermediate Power BI for Data Analysis	2	3	N300,000									12-14		14-16		
Power BI Advanced Analytics with Python	2	3	N300,000						20-22						25-27	
Artificial Intelligence for Business	1	5	N350,000				18-22					5-9				

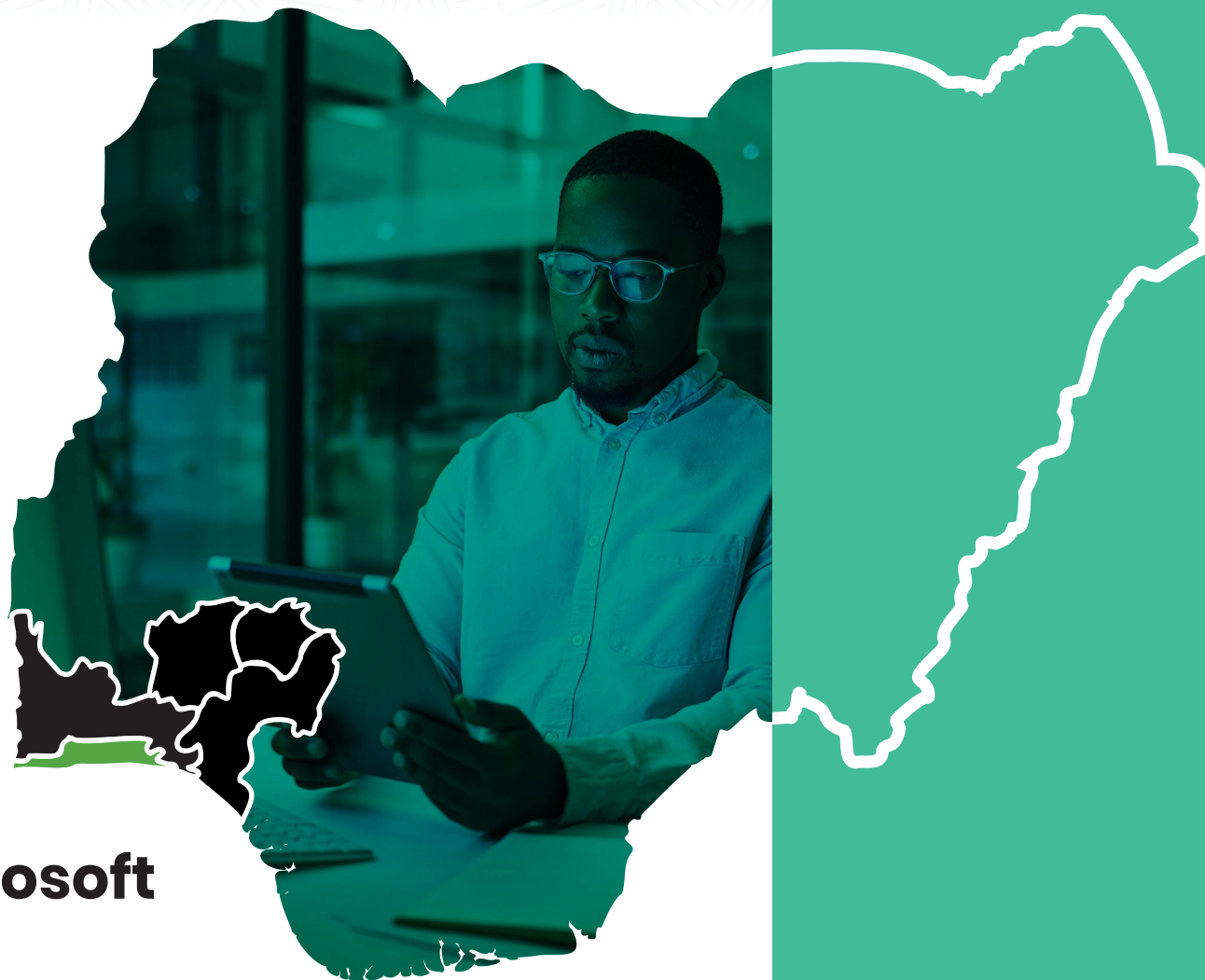
Courses	No of runs	Duration	Fee(N) Exclusive of VAT	Certification fee (\$)	Jan	Feb	Mar	Apr	May	Jun	Jul	Aug	Sep	Oct	Nov	Dec
<b>Data Analytics and Business Intelligence</b>																
Database Design, Technique, and tools with PL/SQL	5	4	N350,000		22-25				6-9			12-15		7-10	11-14	
Applying Machine Learning & Artificial Intelligence to Business Data	3	4	N385,000					15-18			1-4					2-5
Data Recovery Tools & Techniques	3	3	N250,000			5-7					1-3			21-23		
Data Centers Design, Planning, and Implementation	3	5	N265,000				4-8			24-27					11-15	
Financial Analysis and Investments Fundamentals with Python Programming	2	5	N300,000			26-1							9-13			
Learning Programming with Microsoft Excel Macros and VBA	2	5	N300,000		15-19				6-10							
Certified Data Collection Technician	2	4	N600,000					15-18			1-4					
Data Analysis, Techniques, Modelling and Strategy	3	5	N350,000				18-22			24-28			9-13			
Big Data on AWS	2	4	N300,000						6-9						25-28	
Machine Learning: Fundamental	2	5	N350,000				4-8					12-15				
Market Research, Customer Insights, and Competitor Analysis Using Digital Tools	3	4	N355,000					15-18			1-4			7-10		



## Data Governance Programmes



Courses	No of runs	Duration	Training Fee(N)	Certification fee (\$)	Jan	Feb	Mar	Apr	May	Jun	Jul	Aug	Sep	Oct	Nov	Dec
<b>Data Governance</b>																
Data Policies, Procedures and Operating Models	3	4	N355,000				20-23			24-27				7-10		
Data Management Fundamentals	2	2	N295,000					22-23				19-20				
Data Quality Management	3	5	N325,000				4-8			24-28					25-29	
Master and Reference Data Management	2	5	N355,000						6-10			12-16				
Data Modeling	2	3	N355,000				18-20						9-11			
Data Security and Data Privacy	3	3	N365,000			5-7					1-3			21-23		
Metadata Management	3	5	N355,000			5-9					1-5			21-24		
Data Architecture and Lifecycle Management	3	5	N375,000				20-24			24-28				7-11		
Data Security Management	2	4	N365,000					22-25				19-22				
Document and Content Management	3	5	N355,000				4-8			24-28					25-29	
Data Storage & Operations Management	2	3	N355,000							8-10					2-4	
Data Integration and Interoperability	3	3	N325,000		12-14						12-14		2-4			
Data Management for Executives	4	3	N385,000					2-4		19-21		26-28		2-4		



## IT Leadership & Microsoft Programmes



Courses	No of runs	Duration	Fee(N) Exclusive of VAT	Certification fee (\$)	Jan	Feb	Mar	Apr	May	Jun	Jul	Aug	Sep	Oct	Nov	Dec
<b>IT Leadership Training</b>																
Lead Digital Transformation Strategy Executive Program (Ibom ICON Hotel & Golf Resort)	2	5	N1,750,000							24-28			23-27			
Mastering Disruptive Digital Leadership & Strategic Corporate Governance Program (Ibom ICON Hotel & Golf Resort)	2	5	N1,800,000								8-12			14-18		
The Advanced Organizational Resilience Program (Lakowe Lake Resort)	2	5	N1,800,000									5-9			18-22	
The IT Executive Leadership Program (Obudu Mountain Resort)	2	5	N1,800,000									12-16				2-6
Harnessing AI for Breakthrough Innovation and Strategic Impact Program (Ikogosi Warm Spring Resort)	2	5	N1,950,000								1-5			7-11		
<b>Microsoft Courses</b>																
Power BI Essentials: From Beginner to Advanced Analytics	3	5	N350,000				18-22			24-28				7-11		
Microsoft Power BI	2	5	N450,000		29-2				13-17							
Microsoft Power Automate	4	5	N450,000			19-23		22-26			22-26		9-13			
Microsoft Power Apps	4	5	N450,000				11-15		6-10					21-25		
Microsoft Azure	3	5	N450,000					15-18		24-28			2-6			



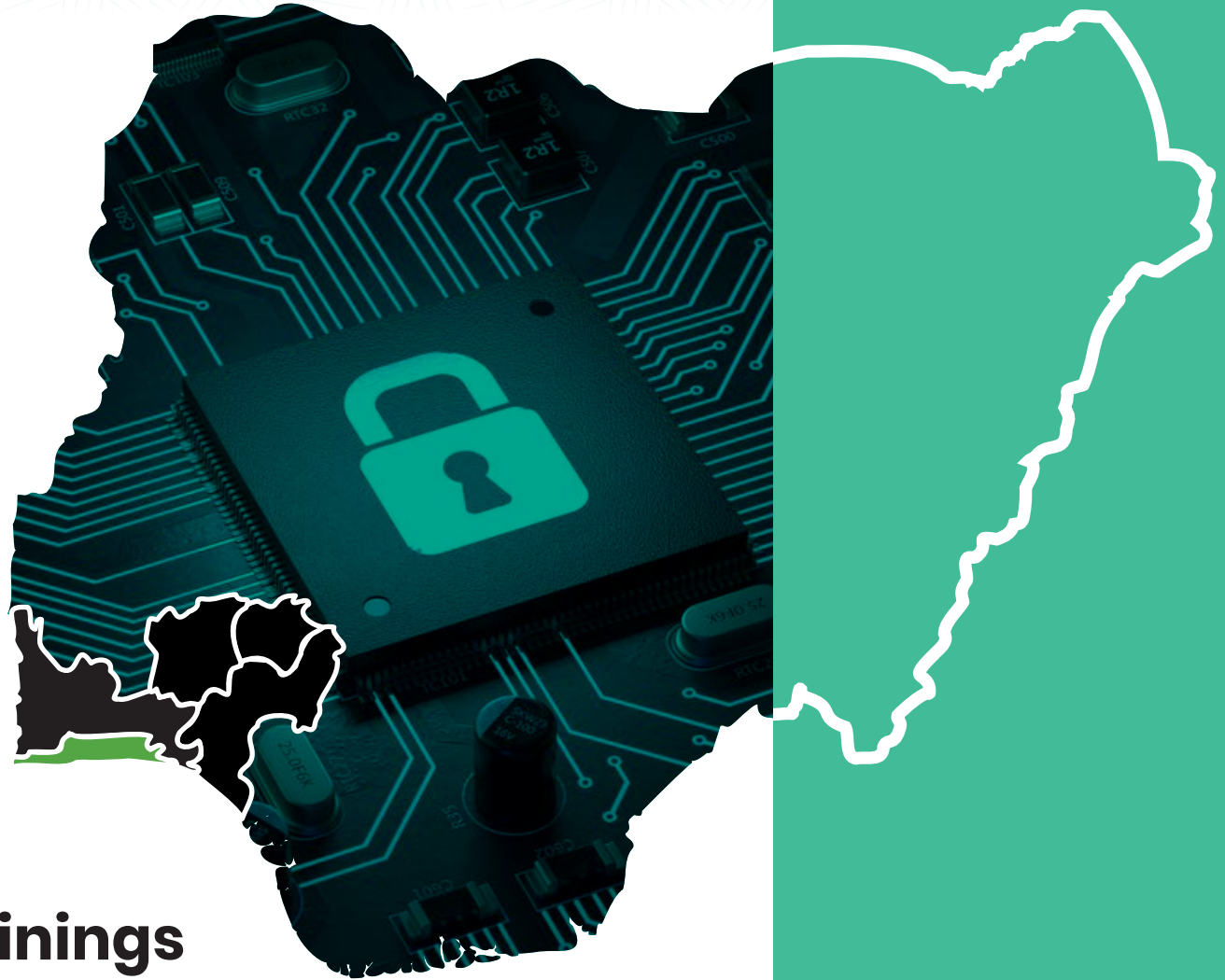
Courses	No of runs	Duration	Fee(N) Exclusive of VAT	Certification fee (\$)	Jan	Feb	Mar	Apr	May	Jun	Jul	Aug	Sep	Oct	Nov	Dec
<b>Microsoft Courses</b>																
Microsoft Azure Data Engineer	3	5	N450,000						20-24			19-23		14-18		
Microsoft Azure AI Developer	3	5	N450,000					22-26			15-19					2-6
Microsoft Exchange Online	3	5	N400,000				18-22						23-27		11-15	
Microsoft SharePoint Online	3	5	N400,000					15-19			1-5			7-11		
Microsoft One Drive for Business (ODB)	3	5	N400,000				11-15				22-26				18-22	
Microsoft Azure Fundamental	3	5	N350,000				18-22			24-28				7-11		
Designing and Implementing Microsoft DevOps Infrastructure	2	5	N450,000		29-2				13-17							
Certified Internet of Things (IoT) Practitioner	4	5	N450,000			19-23		22-26			22-26		9-13			
Microsoft .NET	4	5	N450,000				11-15		6-10					21-25		
Microsoft Desktop	3	5	N450,000					15-18		24-28			2-6			
Microsoft Exchange Server	3	5	N450,000						20-24			19-23		14-18		

# Information Security & Payment Systems Programmes



Courses	No of runs	Duration	Fee(N) Exclusive of VAT	Certification fee (\$)	Jan	Feb	Mar	Apr	May	Jun	Jul	Aug	Sep	Oct	Nov	Dec
<b>Information Security</b>																
(ISC)2 CISSP CBK Review Seminar (with exam)	3	5	N385,000	\$850			18-22				1-5			7-11		
Business Continuity Management for Senior Executives	2	4	N380,000							24-27					4-7	
Ethical Hacking & Counter Measure (CEH) & Certification	4	5	N385,000	\$850				15-19		3-7		26-30			4-8	
Certified Hacking Forensic Investigator (CHFI) & Certification	3	5	N385,000	\$850			18-22				1-5			14-18		
Information Security Incident investigation and management	2	5	N355,000					15-19				12-16				
Kali Linux Certified Professional	1	4	N400,000	\$500						24-28						
Certified Data Protection Officer	4	4	N380,000	\$500		5-8		2-5			1-4		2-5			
Cyber-Security & Data Privacy	3	5	N370,000				18-22				1-5		2-6		11-15	
Strategic ICT Management for IT and Non -IT Managers	2	4	N300,000						20-23					2-5		
IBM Cybersecurity Analyst Professional	2	4	N300,000			19-22						12-15				

Courses	No of runs	Duration	Fee(N) Exclusive of VAT	Certification fee (\$)	Jan	Feb	Mar	Apr	May	Jun	Jul	Aug	Sep	Oct	Nov	Dec
<b>Information Security</b>																
Skills Framework for the Information Age	3	5	N400,000						13-17		1-5					2-6
ISO 27701 Privacy Information Management System	3	4	N350,000			5-8						5-8		7-11		
ISO/IEC 29100 Privacy Framework Foundation	3	4	N300,000				18-21			24-26				7-9		
ISO/IEC 29100 Certified Lead Privacy Implementer	3	4	N370,000				18-21			24-28				7-11		
Internet of Things for Business Professionals	3	5	N295,000			5-9				3-7					4-8	
<b>Payment Systems</b>																
Fundamentals of Payment Industry	3	3	N255,000		22-24			15-17					9-11			
Payment Card Industry Data Security Standard Awareness training (PCI DSS)	2	2	N250,000				18-19					12-13				
Cybersecurity & Fraud Detection in Payment Systems	3	5	N400,000			19-23			6-10					21-26		
Data Analytics for Payment Systems	2	4	N400,000				4-7				8-11					
Payment Systems Stakeholder Engagement and Communication	2	5	N400,000					22-26			8-12					
Payment Systems Leadership & Management Skills	3	4	N400,000			5-8				3-7					25-29	
Ethical Practices & Corporate Governance in Payment Systems	2	5	N400,000				4-8			3-7						



# Cybersecurity & Cloudsecurity Trainings

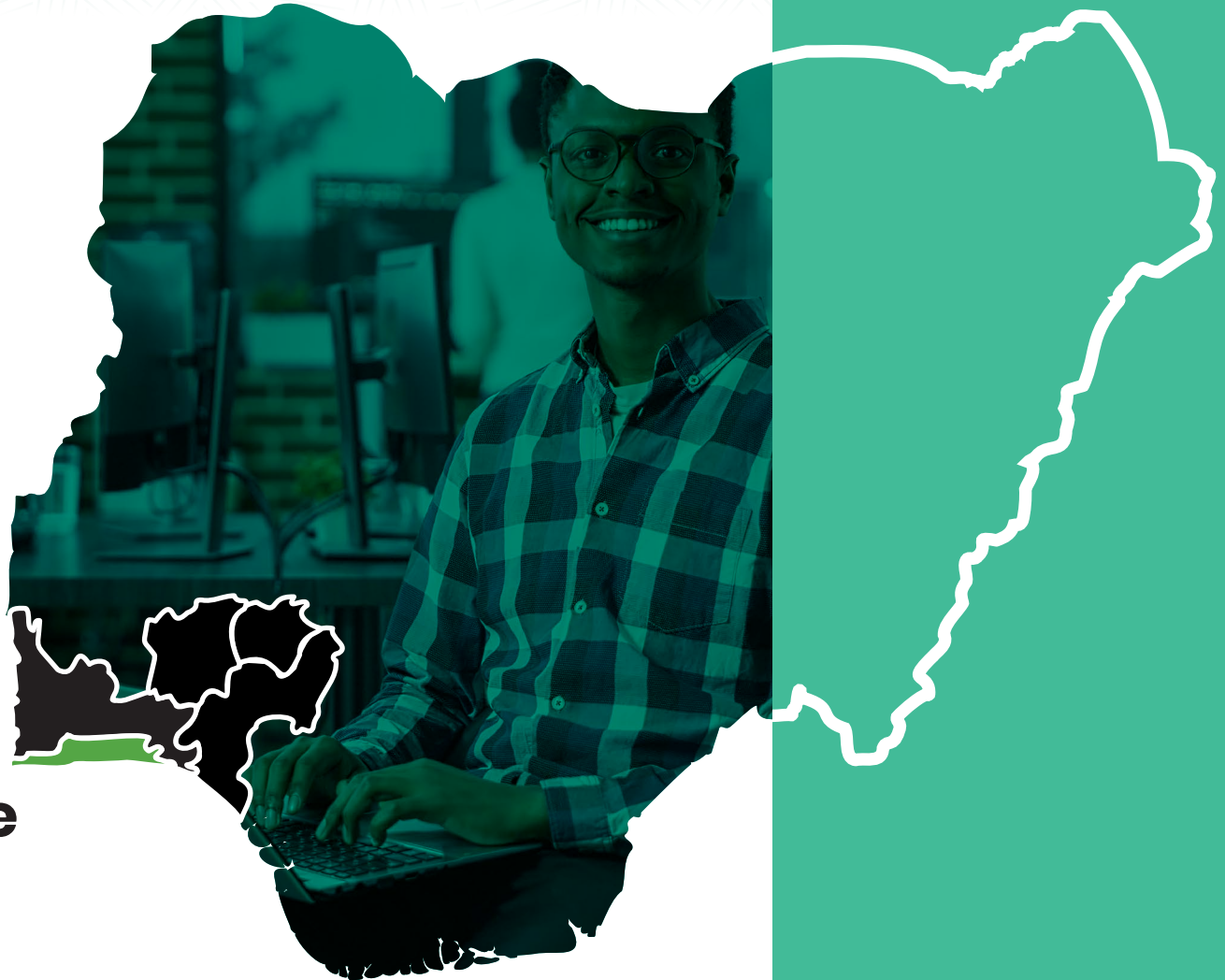


Courses	No of runs	Duration	Fee(N) Exclusive of VAT	Certification fee (\$)	Jan	Feb	Mar	Apr	May	Jun	Jul	Aug	Sep	Oct	Nov	Dec
<b>Cyber Security</b>																
Certified ISO 27032 - Cyber Security Lead Manager	4	4	N355,000	\$500			18-21				1-4		2-5		11-14	
Cybersecurity Fundamentals for Business	4	3	N255,000				18-20				1-3		2-4		11-13	
Penetration Testing: A Complete Hands-on Approach	3	5	N365,000			5-9			20-24		1-5					
CompTIA Linux+	2	5	N400,000					22-26			29-2					
CompTIA Network+	2	5	N400,000				11-15					12-16				
CompTIA Security+	2	5	N400,000						13-17				23-27			
CompTIA A+	2	5	N400,000			12-16				24-28						
Cybersecurity and Infrastructure Security Agency	2	5	N380,000													
EC-Council Certified Security Analyst (ECSA)	2	5	N425,000						6-10					7-11		
Licensed Penetration Tester (LPT)	3	5	N455,000					22-26			29-2					2-6
Cybersecurity in Oil and Gas	3	5	N345,000						6-10				9-13		11-15	
IATA Aviation Cybersecurity	2	3	N385,000							3-5			9-11			
Leading Remote cybersecurity Teams and Cybersecurity Resilience	2	5	N435,000			5-9						12-16				
Advanced Digital Leadership and Change Management Strategies	2	5	N450,000						13-17				2-6			

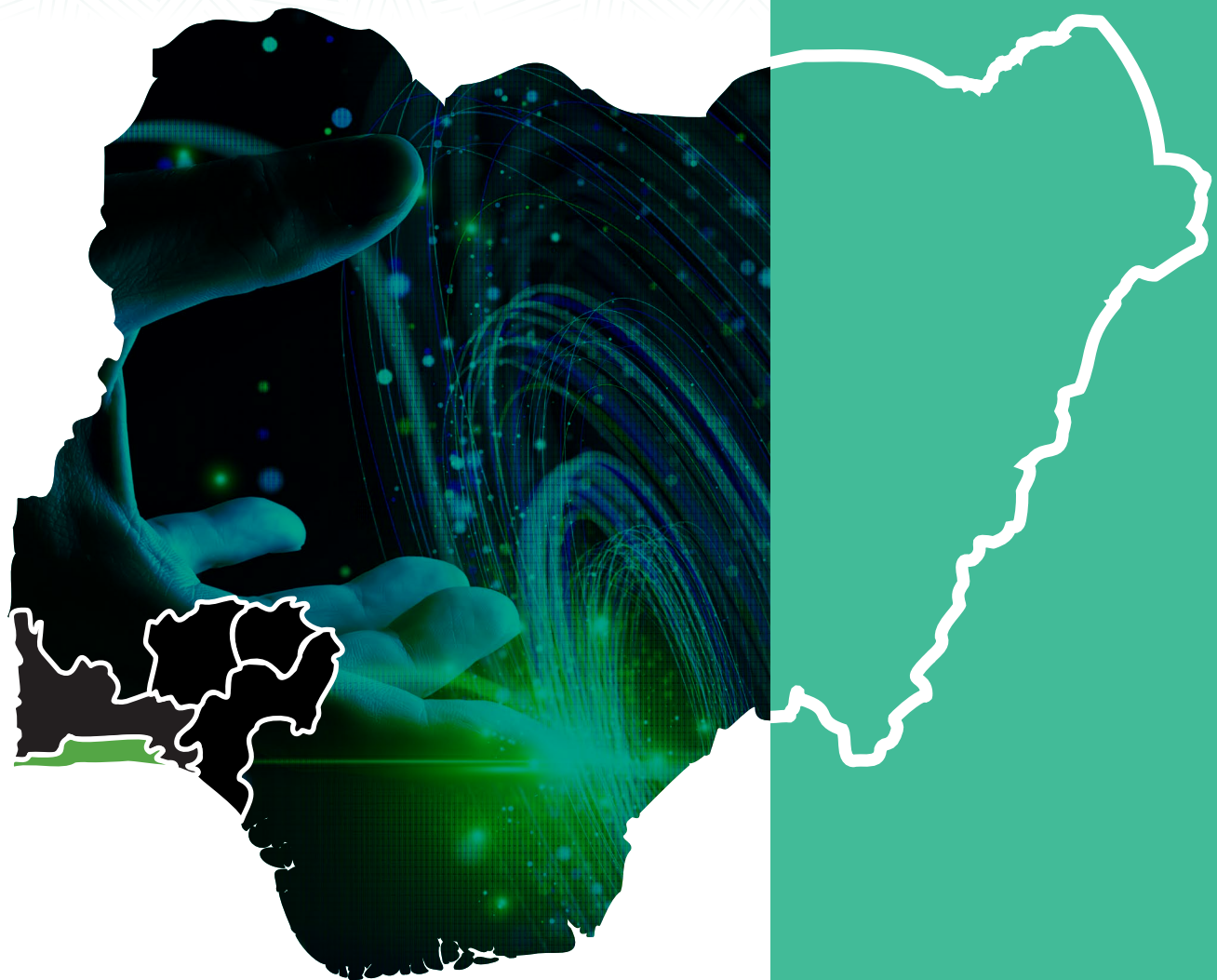


Courses	No of runs	Duration	Fee(N) Exclusive of VAT	Certification fee (\$)	Jan	Feb	Mar	Apr	May	Jun	Jul	Aug	Sep	Oct	Nov	Dec
<b>Cloud Security Trainings</b>																
Certified Cloud Security Professional (CCSP)	4	5	N395,000	\$750				15-19		24-28		19-23		14-17		
Certified Cloud Security Analyst	2	3	N500,000						27-29						4-6	
<b>AWS Trainings</b>																
AWS Cloud Practitioner	2	4	N400,000				4-7					5-8				
AWS Solutions Architect	2	5	N400,000					15-19					9-13			
AWS Developer	2	5	N400,000						13-17					14-18		
AWS DevOps Engineer	2	5	N400,000							24-28					18-22	
AWS Operations	2	5	N400,000								15-19					2-6

# **Fraud Detection, Business Solutions, Machine Learning & Software Development Trainings**



Courses	No of runs	Duration	Training Fee(N)	Certification fee (\$)	Jan	Feb	Mar	Apr	May	Jun	Jul	Aug	Sep	Oct	Nov	Dec
<b>Software Development and security</b>																
Secure Software Development And Certified Software Security Lifecycle Professional Certification( CSSLP)	3	5	N395,000	\$750				22-26		3-7			2-6			
Secure Coding	3	4	N375,000					22-25			22-25			7-11		
Software Testing Masterclass	3	5	N365,000						6-10			12-16			25-29	
<b>Banking Solutions</b>																
E-business solutions & Digital Transaction banking trainings	3	4	N350,000				11-14					5-8		21-24		
Open Banking	3	4	N300,000		22-25					24-27					18-21	
<b>Fraud Detection</b>																
Excellence in Fraud Investigation Detection and Control Programme	2	4	N375,000					22-25	13-16				23-26			
IT Auditing & Fraud Detection	2	3	N325,000						13-15			26-28				
Fraud Risk Management	2	4	N325,000							3-7				7-10		
Certified Fraud Examiner	2	4	N350,000				11-14				15-18					
Risk Management: Internal Control and Fraud Detection	3	5	N435,000			12-16						12-16		2-6		
<b>Machine Learning</b>																
Introduction to Machine Learning in Production	3	5	N345,000				4-8				15-19				11-15	
Investment Management With Python and Machine Learning Specialization	2	5	N450,000						20-24			19-23				



## **SAP & Salesforce Trainings**



Courses	No of runs	Duration	Fee(N) Exclusive of VAT	Certification fee (\$)	Jan	Feb	Mar	Apr	May	Jun	Jul	Aug	Sep	Oct	Nov	Dec
<b>SAP Courses</b>																
SAP Ticketing	2	3	N300,000							19-21				2-4		
SAP Finance and Controlling	2	5	N400,000			26-1					1-5					
SAP Data Security	2	5	N400,000				18-22						9-13			
SAP Data Hub	2	5	N400,000					15-19				12-16				
SAP HANA	3	5	N400,000		29-2			15-19			1-5					
SAP BusinessObjects	3	5	N400,000			12-16		22-26					23-27			
SAP ERP	3	5	N400,000				18-22			24-28			9-13			
SAP ABAP	3	5	N400,000					15-19			15-19		9-13			
SAP Business Warehouse	3	5	N400,000						6-10			26-30		14-17		
SAP Supply Chain Management	3	5	N400,000		22-26						8-12				11-15	
SAP NetWeaver	3	5	N400,000			19-23				24-28				21-25		

Courses	No of runs	Duration	Fee(N) Exclusive of VAT	Jan	Feb	Mar	Apr	May	Jun	Jul	Aug	Sep	Oct	Nov	Dec
<b>SalesForce Courses</b>															
SalesForce Beginner Administrator (With exams)	3	3	N400,000		5-9				3-7		26-28				
SalesForce App Builder	3	5	N400,000			11-15		13-17					7-11		
SalesForce Platform Developer 1	3	4	N400,000				15-18		3-7			2-5			
SalesForce Platform Developer 2	4	5	N400,000					20-24		15-19			14-18		2-6

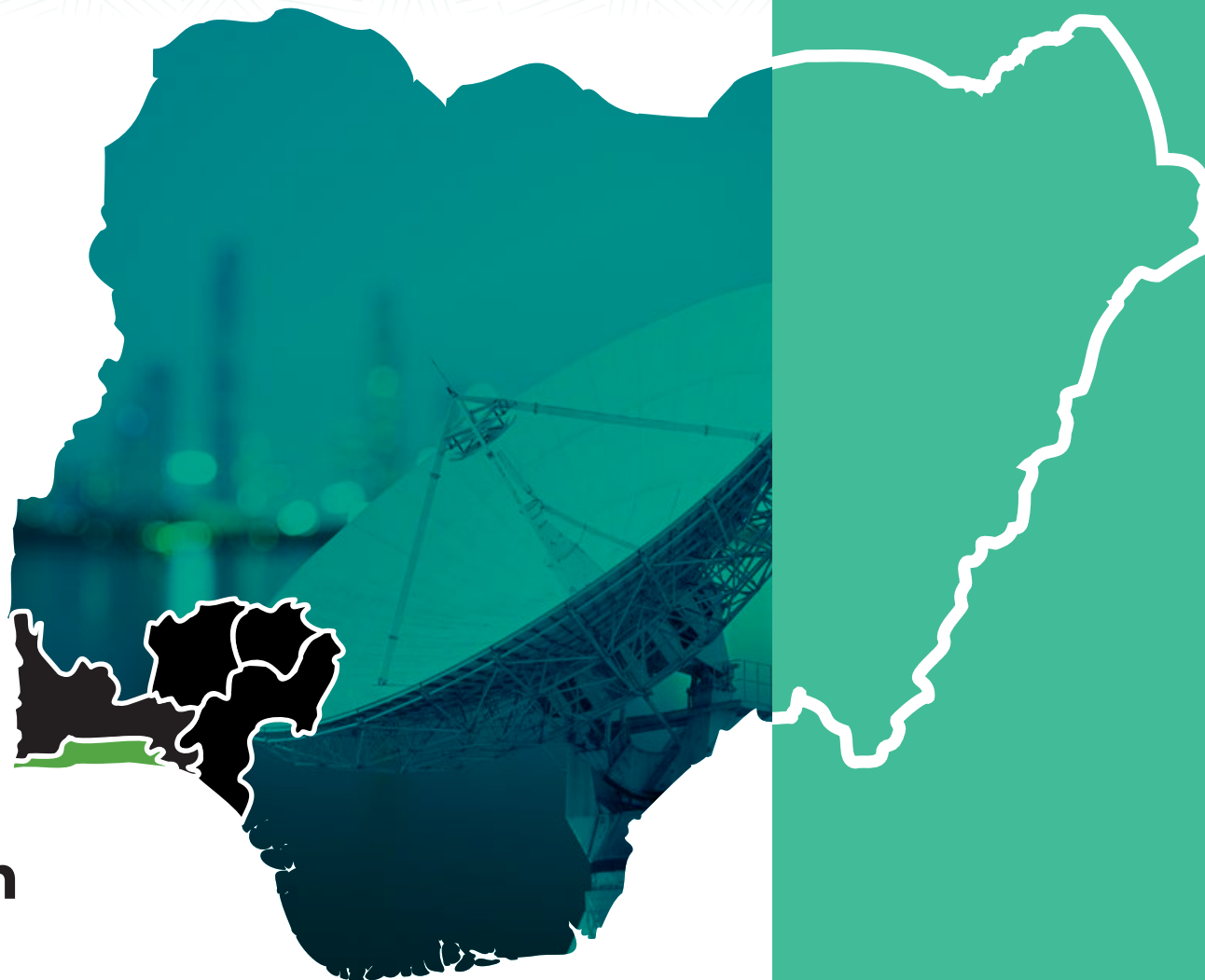




# Cisco Trainings



Courses	No of runs	Duration	Training Fee(N)	Certification fee (\$)	Jan	Feb	Mar	Apr	May	Jun	Jul	Aug	Sep	Oct	Nov	Dec
<b>CISCO Trainings</b>																
Cisco Cloud	2	5	N400,000							24-28					18-22	
Cisco Collaboration	2	5	N400,000						13-17					14-18		
Cisco Data Center	2	5	N400,000					1-5					9-13			
Cisco Enterprise	2	5	N400,000				4-8					5-9				
Cisco Wireless	2	5	N400,000								15-19					2-6
Cisco Unified	2	5	N400,000			26-1				3-7						
Cisco Service Provider	2	5	N400,000					15-19				12-16				
Cisco Security	2	5	N400,000						20-24				23-27			
Cisco Routing & Switching	2	5	N400,000				11-15								25-29	
Cisco Network Automation	2	5	N400,000					22-26						28-1		
Cisco Certified Network Associate Enterprise (200-301)	2	5	N400,000						27-31					7-11		
Cisco Certified Network Professional Enterprise (350-401 ENCORE)	2	5	N400,000							24-28			2-6			
Cisco Certified Network Professional Enterprise (300-410 ENARSI)	2	5	N400,000								3-7				4-8	



# Telecommunication Programmes



Courses	No of runs	Duration	Training Fee(N)	Certification fee (\$)	Jan	Feb	Mar	Apr	May	Jun	Jul	Aug	Sep	Oct	Nov	Dec
<b>Telecom Trainings</b>																
Digital Procurement and Vendor Management	3	5	N395,000					15-18			1-4			7-10		
Digital Procurement Transformation	3	5	N400,000				4-7				1-4				11-14	
Spend Analysis Tools	3	5	N550,000					22-26		24-28			9-13			
e-procurement systems	3	5	N400,000			5-9			6-10						11-15	
Contract Management Software	3	5	N400,000		22-26			15-19				12-15				
Security and Surveillance Technologies	2	4	N385,000				18-21						9-12			
Artificial Intelligence (AI) in Legal Research	3	5	N400,000			5-9			6-10						11-15	
Patent Analysis and Intellectual Property (IP) Management	3	5	N400,000		22-26			15-19				12-15				
Telecom Standards and Protocols	3	5	N450,000				4-7				1-4				11-14	
Telecom Regulatory Framework	3	5	N355,000					22-26		24-28			9-13			
Telecom Law and Regulations	3	5	N450,000			5-9					1-5			21-24		
Spectrum Management Training	3	4	N400,000					15-18			1-4			7-10		
The Committee of Sponsoring Organizations (COSO Framework)	3	4	N400,000				4-7				1-4				4-8	
Cybersecurity & Data Privacy in the Telecom Industry	3	5	N450,000					22-26		24-28			9-13			



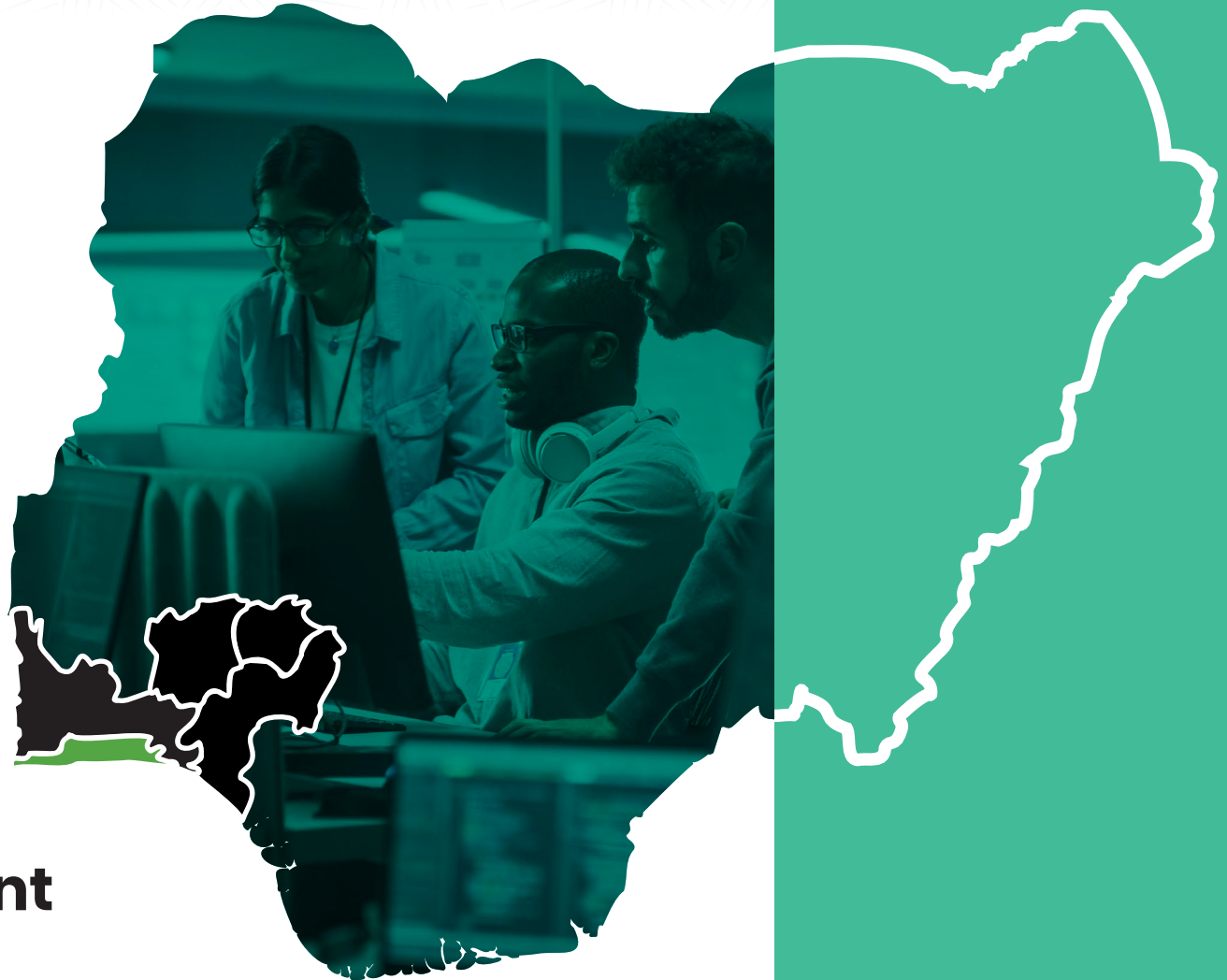
# Microsoft Dynamics 365 & Blockchain Trainings



Courses	No of runs	Duration	Fee(N) Exclusive of VAT	Certification fee (\$)	Jan	Feb	Mar	Apr	May	Jun	Jul	Aug	Sep	Oct	Nov	Dec
<b>Microsoft Dynamics 365</b>																
Microsoft Dynamics 365 Commerce	3	5 days	N400,000				18-22				22-26				4-8	
Microsoft Dynamics 365 Supply Chain	3	5 days	N400,000					15-19				12-16		14-18		
Microsoft Dynamics 365 Finance	3	5 days	N400,000						20-24			5-9		28-1		
Microsoft Dynamics 365 HR	3	5 days	N400,000							24-28			23-27		11-15	
Microsoft Dynamics 365 Customer Insights	3	5 days	N400,000						13-17			19-23				2-6
Microsoft Dynamics 365 Customer Relationship Management	3	5 days	N400,000					15-19			1-5		9-13			
Customization & Integration of Enterprise Application with Microsoft	4	5 days	N400,000				4-8				8-12			7-11		
<b>Blockchain and Digital Currency</b>																
Certified Blockchain Developer	3	5 days	N400,000		29-2			15-19			31-3			28-1		
Certified Enterprise Blockchain Professional	4	5 days	N400,000			12-16			27-31						11-15	
Trading with Technical Analysis	2	4 days	N350,000				11-14					12-15				

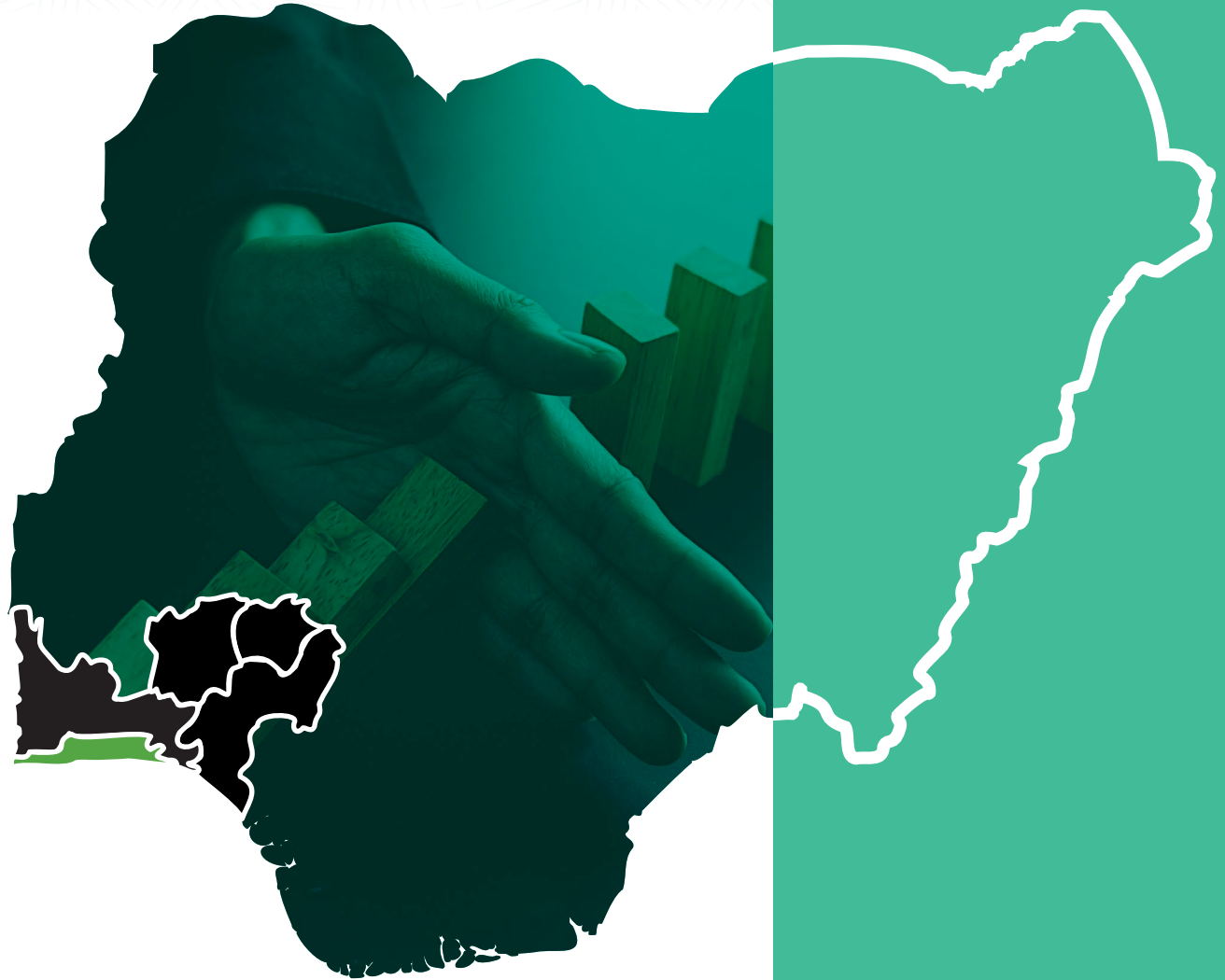


# IT Governance & Service Management Programmes



Courses	No of runs	Duration	Fee(N) Exclusive of VAT	Certification fee (\$)	Jan	Feb	Mar	Apr	May	Jun	Jul	Aug	Sep	Oct	Nov	Dec
<b>IT Governance and Service Management</b>																
TOGAF (9.2) Enterprise Architecture Combined Foundation and Practitioner (with Exams)	5	5	N375,000	\$850	22-26		11-15		13-17			19-23			25-29	
TOGAF (9.2) Integrating Risk & Security Combined Foundation and Practitioner (with Exams)	3	5	N375,000	\$850					6-10				23-27			2-6
TOGAF 10 Enterprise Architecture	3	3	N450,000			5-7			24-26				17-19			
IT Strategy & Governance	4	3	N285,000				4-6		27-29			19-21		21-23		
Certified in Governance & Enterprise Information Technology (CGEIT)	4	5	N385,000	\$1000			4-8		27-31			19-23		21-25		
Executive Awareness in IT Service Management	3	2	N285,000				25-27				1-3					
Business Architecture Design for Non-IT	3	4	N298,000					22-24			8-10					2-4
TOGAF 9.2 Business Architecture Combined Foundation & Practitioner with (Exams)	3	5	N375,000	\$850				22-26			8-12					2-6
Capability Maturity Model Integration for Development (CMMI- DEV)	3	5	N400,000				4-8			3-7			17-21			

Courses	No of runs	Duration	Fee(N) Exclusive of VAT	Certification fee (\$)	Jan	Feb	Mar	Apr	May	Jun	Jul	Aug	Sep	Oct	Nov	Dec
<b>IT Governance and Service Management</b>																
COBIT® 2019 Foundation	4	2	N250,000	\$300			18-20			24-26			2-4		25-27	
COBIT® 2019 Design and Implementation	4	3	N350,000	\$400			18-22			24-28			2-6		25-29	
ITIL 4® Foundation & certification (with exam)	6	3	N800,000		22-24			15-17		19-21		12-14		2-4		2-4
ISO 38500 IT Corporate Governance	3	4	N350,000	\$600					27-30				17-20		25-28	



## IT Risk & GRC Programmes




Courses	No of runs	Duration	Fee(N) Exclusive of VAT	Certification fee (\$)	Jan	Feb	Mar	Apr	May	Jun	Jul	Aug	Sep	Oct	Nov	Dec
<b>IT Risk &amp; Compliance</b>																
OHSAS 45001 (Occupational Health & Safety Management Systems) Lead Auditor & Certification	3	5	N385,000	\$500		5-9						12-16			18-22	
OHSAS 45001 (Occupational Health & Safety Management Systems) Lead Implementer & Certification	3	5	N385,000	\$500			11-15			24-28			9-13			
ISO 50001 (Energy Management System) Lead Auditor & Certification	3	5	N385,000	\$500		19-23						5-9			25-29	
ISO 50001 (Energy Management System) Lead Implementer & Certification	3	5	N385,000	\$500			18-22				8-12		2-6			
ISO 55000 Asset Management System	3	5	N385,000	\$500				22-26		3-7				14-18		
ISO/IEC 20000 Lead Auditor & Certification	3	5	N305,000	\$500				15-19			15-19					2-6
ISO/IEC 20000 Lead Implementer & Certification	3	5	N385,000	\$500		12-16							23-27		4-8	
ISO/IEC 20000 Practitioner & Certification	3	5	N385,000	\$500				15-19					9-13			2-6
ISO 27001 Lead Auditor & Certification	4	5	N385,000	\$500		19-23			6-10			19-23			11-15	
ISO 27001 Lead Implementer & Certification	4	5	N385,000	\$500					13-17		8-12		2-6	7-11		
ISO 22301 - Business Continuity Management Lead Auditor Certification	4	5	N385,000	\$500			18-22			3-7			9-13			2-6
ISO 22301 - Business Continuity Management Lead Implementer Certification	4	5	N385,000	\$500		12-15				24-28		26-30			18-22	
Managing Fraud in a Digitalized World	2	5	N435,000				18-22						9-13			

Courses	No of runs	Duration	Fee(N) Exclusive of VAT	Certification fee (\$)	Jan	Feb	Mar	Apr	May	Jun	Jul	Aug	Sep	Oct	Nov	Dec
<b>IT Risk &amp; Compliance</b>																
Improving Productivity through Quality Enhancement & Cost Reduction	2	5	N300,000				18-22					19-23			18-22	
Certified in Risk and Information Systems Control (CRISC) Bootcamp	3	5	N400,000	\$1000				15-19				19-23			4-8	
Compliance Risk Management	3	3	N300,000			5-7			6-8				2-4			
Enterprise Risk Management	3	3	N300,000				11-13				15-17				11-13	
ISO 9001 Quality Management Systems Lead Auditor & Certification	3	5	N385,000	\$500							15-19		9-13	21-25		
Quality Assurance and Food Safety Management	2	4	N385,000				18-21						9-12			
Certified Information Security Manager® (CISM)	3	5	N400,000	\$1000				22-26			1-5				4-8	
CISA® (Certified Information Systems Auditor®)	3	5	N400,000	\$1000			18-22			24-28				7-11		





# International Programmes

A photograph of three people in a meeting. In the foreground, a Black woman with braids and a white top is smiling and looking towards the right. Next to her, a white woman with blonde hair and glasses is also smiling and looking towards the right. In the background, a man is sitting at a desk, working on a laptop. The scene is set in a modern office with a whiteboard and a laptop on the desk. The image has a teal overlay.

At Phillips Consulting (pcl.), we recognise the profound impact that global learning experiences can have on individuals seeking to excel in their respective fields. We have invested significant effort in establishing strong partnerships with renowned global institutions to bring this vision to life.

**Our partners include:**

- Jesus College in the University of Cambridge
- Howard University, Washington DC
- Terry School of Business, Atlanta, GA
- University of Pretoria, Pretoria, South Africa

Through these partnerships, we offer business leaders and executives access to a wide range of world-class resources, including cutting-edge research, best practices, and expert insights, which allows them to stay at the forefront of industry trends, global developments, and the ability to navigate and shape the business landscape.

Courses	No of runs	Duration	Fee(\$)	Jun	Jul	Sep	Nov	Dec
Creative Leadership Strategies for The Future of Work: Intellectual Forum. Jesus College, Cambridge University, United Kingdom.	2	4 Days	10,000	10-13			18-21	
Disruptive Leadership Masterclass, Jesus College, Cambridge University, United Kingdom	2	1 week	10,000		8-12			
The Global Executive Leadership Programme; Howard University, Washington DC, USA	2	1 week	6,750	24-28		9-13		
Strategic Thinking, Planning & Execution for Executives, Howard University, Washington DC	2	1 week	6,750		1-5	16-20	13-17	
Global Business Leadership, Terry School of Business, University of Georgia	2	1 week	6,750	17-21		2-6		
Executive Management Development Programme, University of Pretoria, South Africa	2	1 week	6,750		09-13		Oct 31-Nov 03	
Building the Future Ready board – Abu Dhabi ,UAE	2	1 week	10,500			19-23		5-8
Mastering Disruptive Digital Leadership & Strategic Corporate Governance Program United Kingdom.	2	1 week	6,750.00				18-22	
Lead Digital Transformation Strategy Executive Program United Kingdom	2	1 week	6,750.00	24 – 28			18-22	
The Advanced Organisational Resilience Program Washington DC, USA	1	1 week	6,750.00		8-12			2-6
IT Executive Leadership Washington Program DC, USA	2	1 week	6,750.00				13-17	
Harnessing AI for Breakthrough Innovation and Strategic Impact. (South Africa)	1	1 Week	6,750.00				13-17	





## **LAGOS CENTRE / IN-HOUSE**

### **Training**

0803 402 0520

pcltraininghub@phillipsconsulting.net

### **Ebere**

0803 058 7188

Eberen@phillipsconsulting.net

## **TECHNOLOGY PROGRAMMES**

### **Ebere**

0803 058 7188

eberen@phillipsconsulting.net

### **Gbenga**

0909 363 9259

Oluwagbengap@phillipsconsulting.net

## **TECHNOLOGY PROGRAMMES**

### **Yewande**

0813 610 8878

yewandeo@phillipsconsulting.net

### **Paul**

0803 844 8951

paula@phillipsconsulting.net

## **ABUJA CENTRE**

### **Innocent**

0806 666 9070;

innocentn@phillipsconsulting.net

## **INTERNATIONAL PROGRAMMES**

### **Jones**

0803 796 5990

jonesa@phillipsconsulting.net

### **Training**

0803 402 0520

pcltraininghub@phillipsconsulting.net

### **Technology Training**

0909 363 9259



# TRANSFORMING POSSIBILITIES

 Phillips Consulting  Phillips Consulting Limited

 @PCLAfrica  Phillips Consulting Limited  Phillips\_Consulting